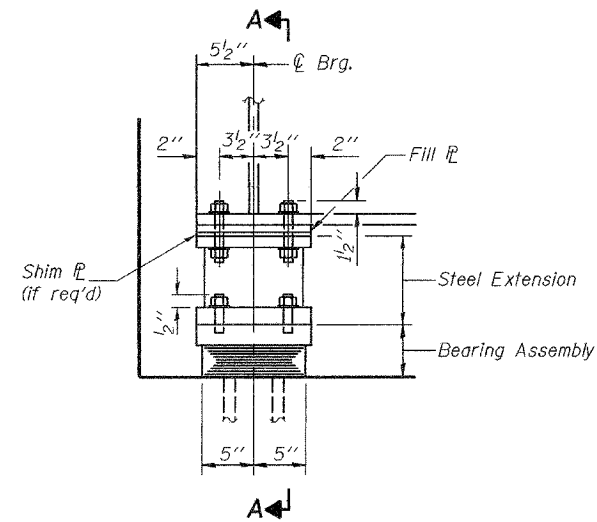


STATE OF ILLINOIS
DEPARTMENT OF TRANSPORTATION

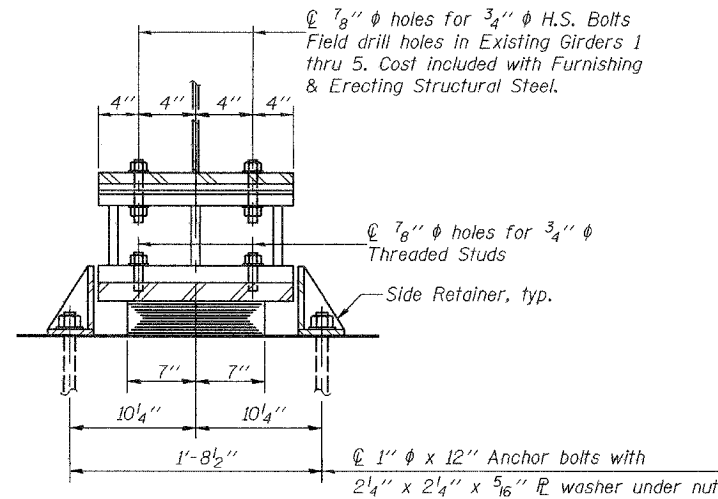
ROUTE NO.	SECTION	COUNTY	TOTAL SHEETS	SHEET NO.
FAP 623	X-IBR	LaSalle	126	79
FED. ROAD DIST. NO. 7		ILLINOIS	FED. AID PROJECT	

Contract #66617

SHEET NO. 24
41 SHEETS



ELEVATION AT EAST ABUT.



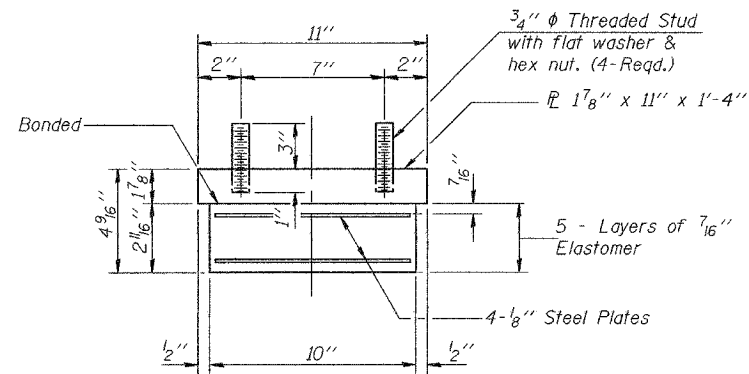
SECTION A-A

TYPE I ELASTOMERIC EXP. BRG.

(6 required)
Girder 1A shown, existing Girders 1-5 similar.

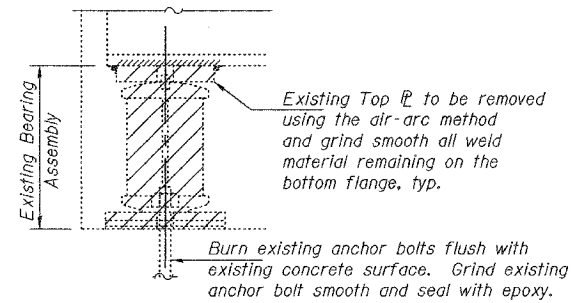
FILL PLATE TABLE

Girder	1A	1	2	3	4	5
East Abutment		1 1/8"	7/8"	5/8"	1"	1"



BEARING ASSEMBLY

Note:
Shim plates shall not be placed under Bearing Assembly.

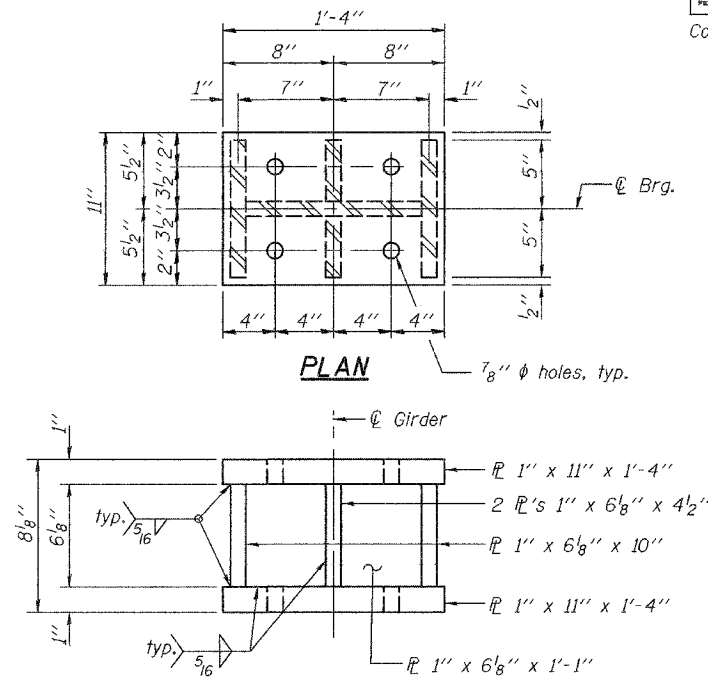


EXISTING BEARING REMOVAL DETAIL

At East and West Abutments (5 at each location)
Cost included with Jack and Remove Existing Bearings.

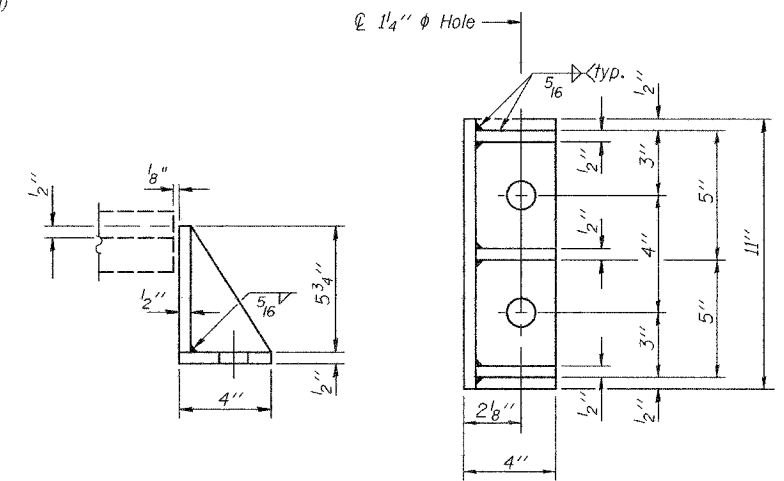
**JACK AND REMOVE EXISTING BEARING PROCEDURE
WEST AND EAST ABUTMENTS**

- Jacking and removing existing bearings shall be done after existing deck removal is complete.
- The Contractor shall submit for approval by the Engineer, plans for jacking existing beams and installing new bearings prior to commencing any related work. This work shall be done for each stage after existing concrete deck is removed and prior to pouring of the new concrete deck. The max. dead load reaction per beam (weight of steel only) per bearing at Abutments is 11 kips and at Piers is 41 kips. Minimum jack capacity is 16.5 kips at Abutments and 61.5 kips at Piers.
- Prior to ordering any material, the Contractor shall verify steel extension height and shim plate thickness required at each bearing so that total height of new bearing, steel extension, shim plate and neoprene pad matches height of existing bearing and shims.
- There shall be at least one jack per bearing and the jack shall be placed close to the bearing. The steel shall be raised a maximum of 1/8".
- The new bearings and steel extensions shall be in place and the jacks shall be lowered before the new concrete deck is poured.



STEEL EXTENSIONS AT EAST ABUTMENT
(6 required)

Notes:
See sheet 26 of 41 for Anchor Bolt Installation details.
See sheet 32 of 41 for Anchor Bolt location.
Two 1/8" adjusting shims shall be provided for each bearing in addition to all other plates or shims and placed as shown in bearing details.



SIDE RETAINER

Equivalent rolled angle with stiffeners will be allowed in lieu of welded plates.
Cost included with Elastomeric Bearing Assembly, Type I.

BILL OF MATERIAL

Item	Unit	Total
Elastomeric Bearing Assembly Type I	Each	6
Jack and Remove Existing Bearings	Each	10

**EAST ABUTMENT BEARING DETAILS &
JACK & REMOVE EXISTING BEARING DETAILS**
F.A.P. ROUTE 623 - SECTION X-IBR
LaSALLE COUNTY
STATION 1036+60.72
STRUCTURE NO. 050-0094

DESIGNED	F.T.
CHECKED	S.M.R.
DRAWN	BECKY M. LEACH
CHECKED	F.T./S.M.R.

February 1, 2007
EXAMINED *Thomas J. Demagala*
ENGINEER OF BRIDGE DESIGN
PASSED *Ralph E. Anderson*
ENGINEER OF BRIDGES AND STRUCTURES