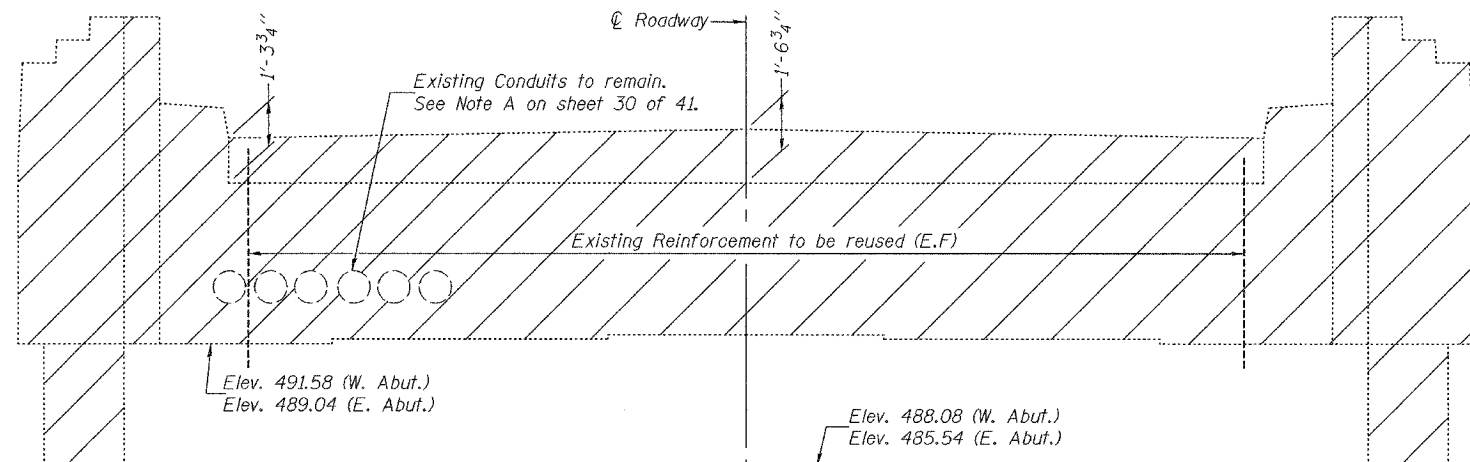


STATE OF ILLINOIS
DEPARTMENT OF TRANSPORTATION

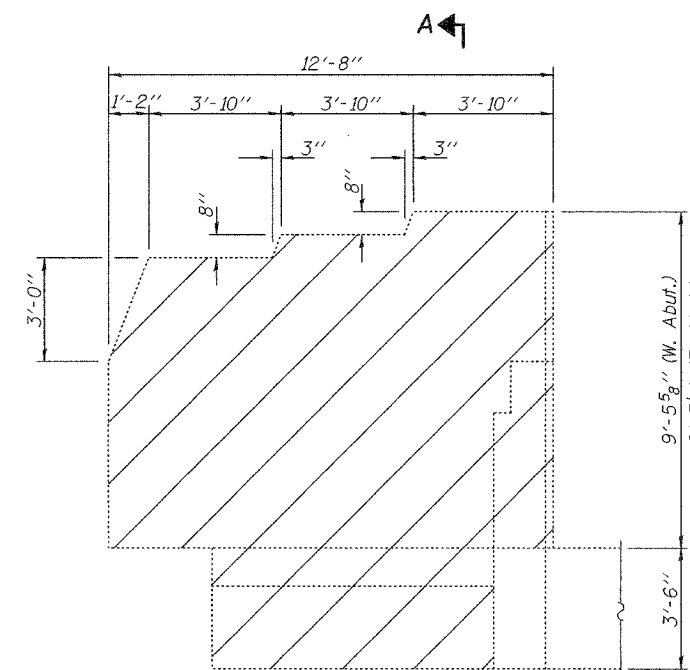
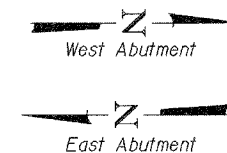
ROUTE NO.	SECTION	COUNTY	SHEETS	SHEET
FAP 623	X-IBR	LaSalle	126	32
FED. ROAD DIST. NO. 7	ILLINOIS	FED. AID PROJECT-		

Contract #66617

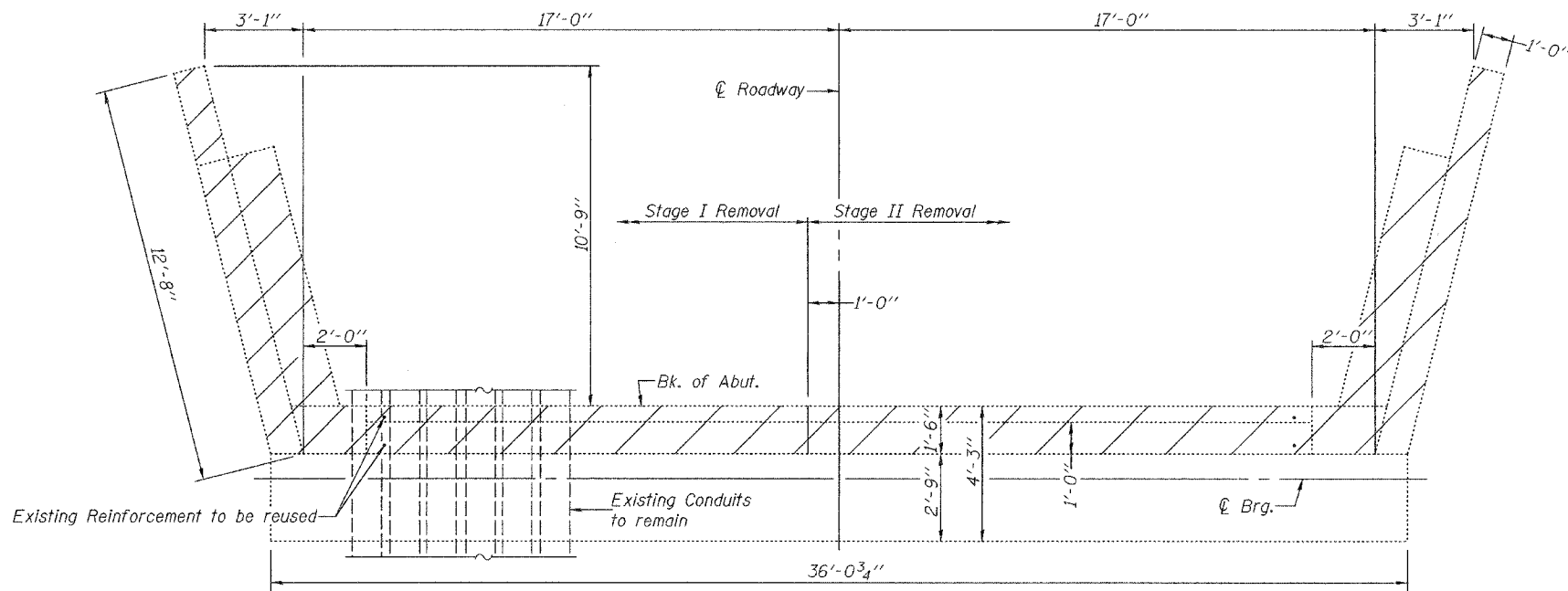
SHEET NO. 27
41 SHEETS



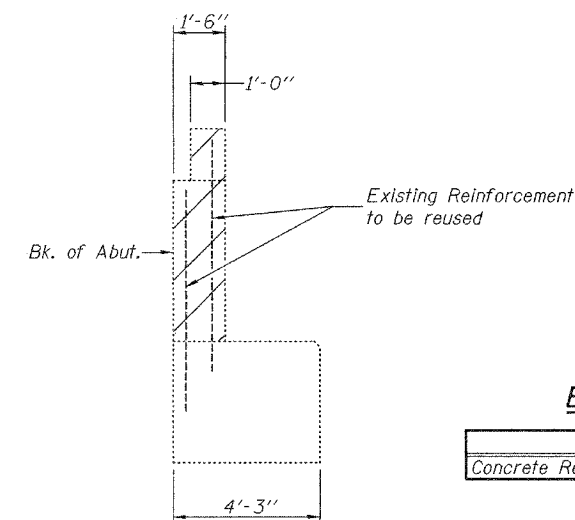
ELEVATION
Symm. about $\text{\textcircled{C}}$ Roadway



WING WALL ELEVATION



TOP VIEW
(E. Abutment shown, W. Abutment similar)



SEC. THRU ABUT.

**TWO ABUTMENTS
BILL OF MATERIAL**

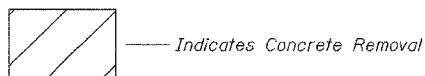
Item	Unit	Total
Concrete Removal	Cu. Yd.	46.8

Notes:

Existing reinforcement not extending into the new construction shall be cut off flush and covered with a 2" layer of cement grout. Cost included with Concrete Removal.

Existing reinforcement bars extending into removal area shall be cleaned, straightened, and incorporated into the new construction. Any reinforcement bars that are damaged during concrete removal shall be replaced with an approved bar splicer or anchorage system. Cost included with Concrete Removal.

See sheet 28 of 41 for Section A-A.



DESIGNED	F.T.
CHECKED	S.M.R.
DRAWN	BECKY M. LEACH
CHECKED	F.T./S.M.R.

February 1, 2007

EXAMINED *Thomas J. Demagalaki*
PROFESSOR IN CHIEF DESIGN

PASSED *Ralph E. Anderson*
ENGINEER OF BRIDGES AND STRUCTURES

**CONCRETE REMOVAL AT ABUTMENTS
F.A.P. ROUTE 623 - SECTION X-IBR
LaSALLE COUNTY
STATION 1036+60.72
STRUCTURE NO. 050-0094**