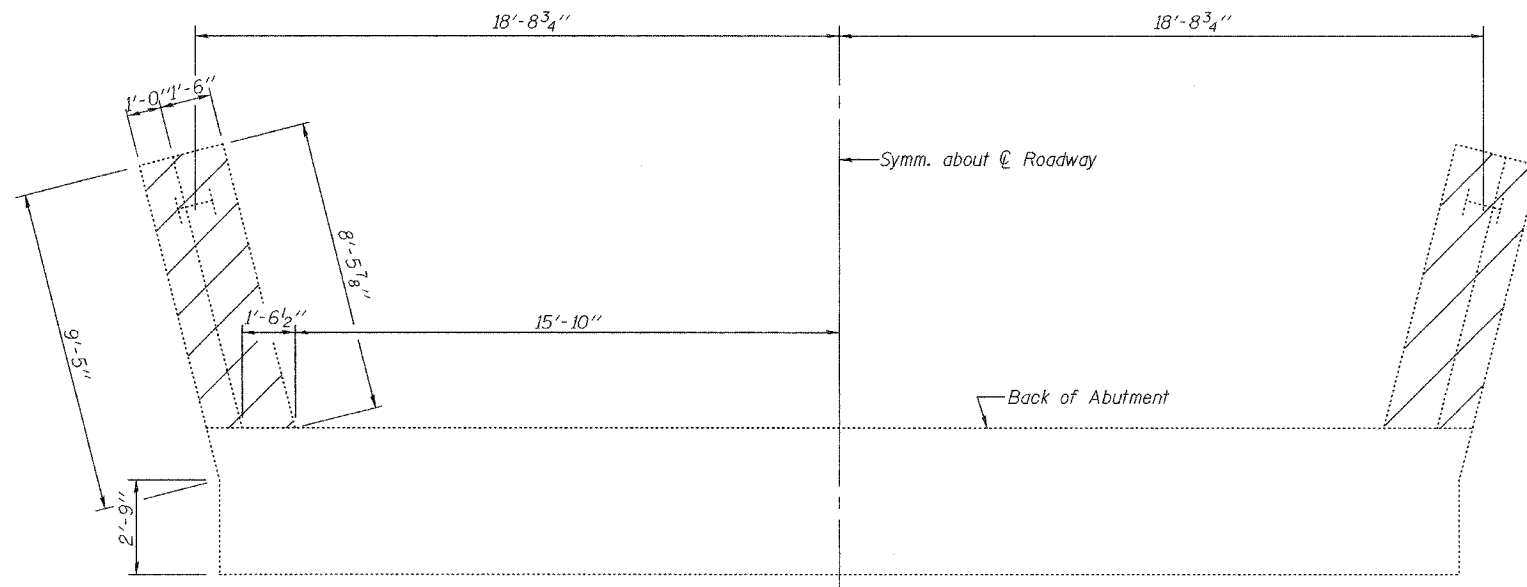
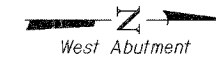


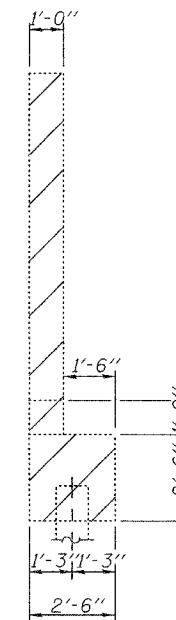
STATE OF ILLINOIS
DEPARTMENT OF TRANSPORTATION

ROUTE NO.	SECTION	COUNTY	TOTAL SHEETS	SHEET NO.	SHEET NO. 28 41 SHEETS
FAP 623	X-IBR	LaSalle	126	83	
FED. ROAD DIST. NO. 7	ILLINOIS	FED. AID PROJECT			

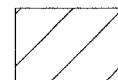
Contract #66617



PLAN - PILE CAP



SECTION A-A

 — Indicates Concrete Removal

DESIGNED	F.T.
CHECKED	S.M.R.
DRAWN	BECKY M. LEACH
CHECKED	F.T./S.M.R.

February 1, 2007
EXAMINED *Thomas J. Demagaki*
ENGINEER OF BRIDGE DESIGN
PASSED *Ralph E. Anderson*
ENGINEER OF BRIDGES AND STRUCTURES

CONCRETE REMOVAL AT ABUTMENTS
F.A.P. ROUTE 623 - SECTION X-IBR
LaSALLE COUNTY
STATION 1036+60.72
STRUCTURE NO. 050-0094