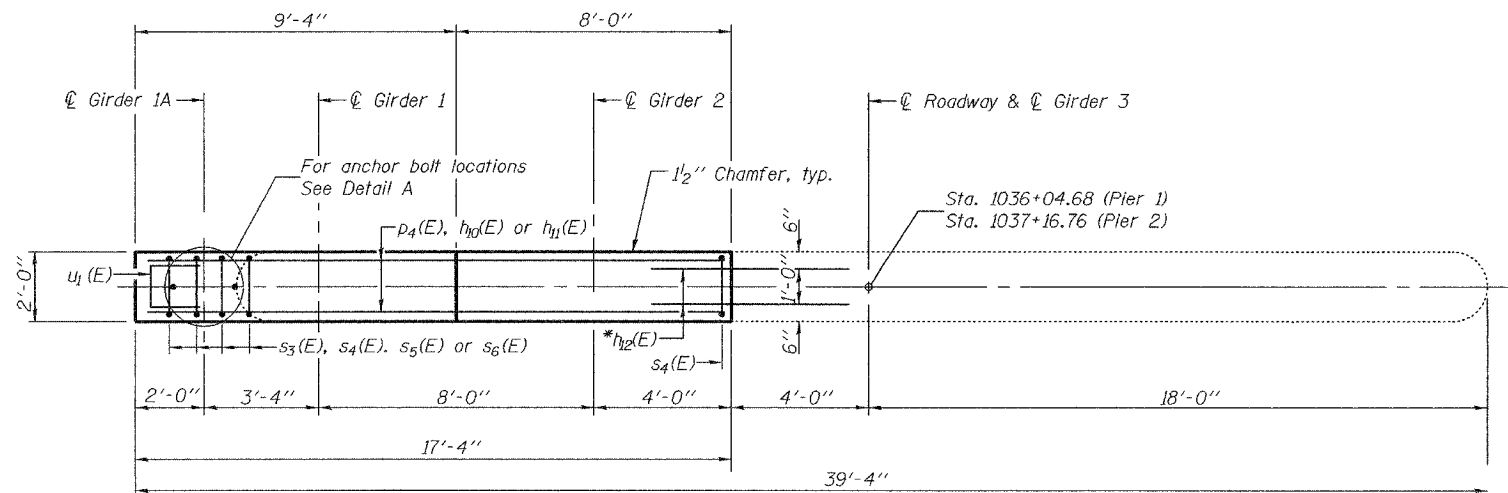


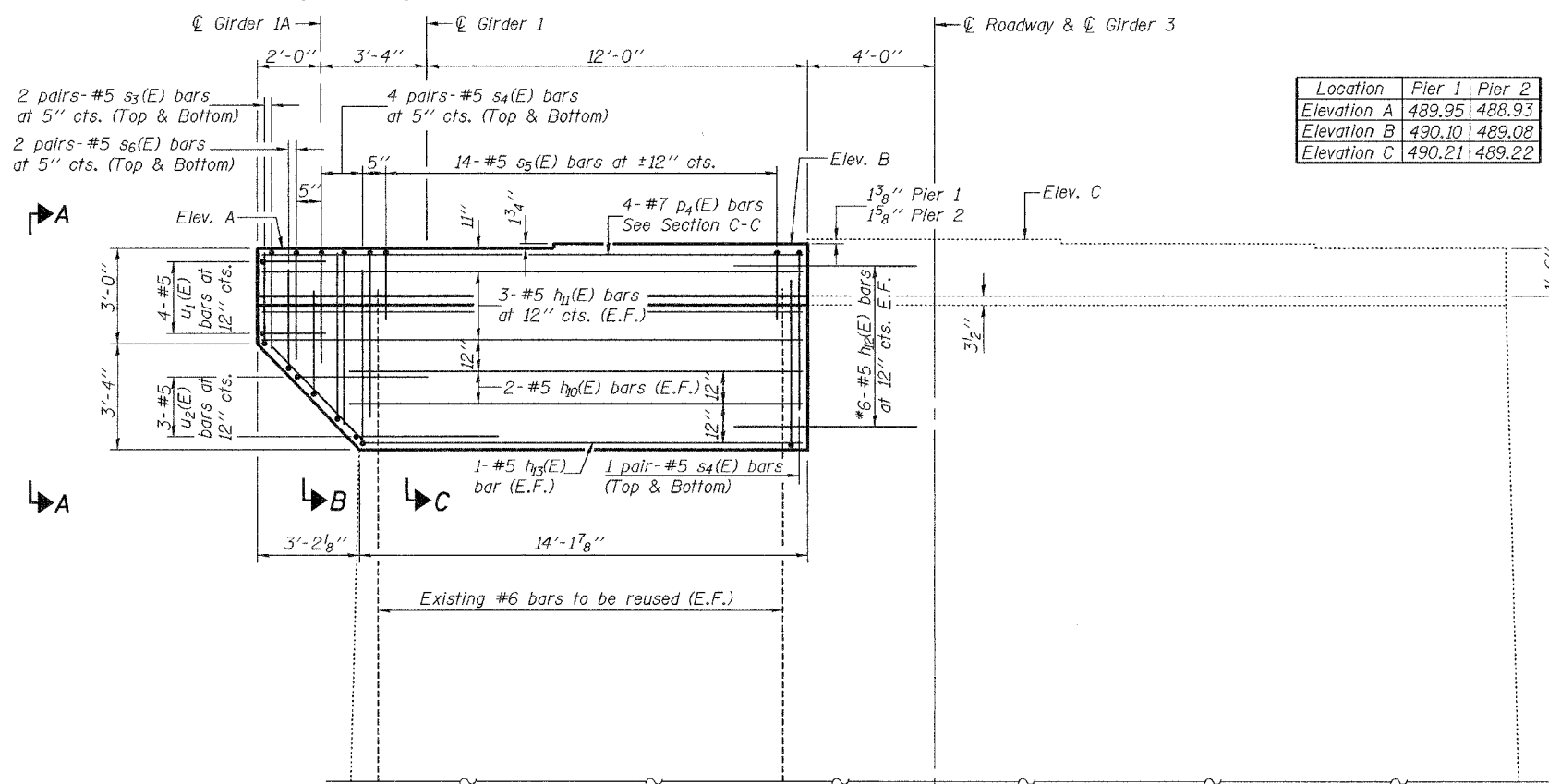
STATE OF ILLINOIS  
DEPARTMENT OF TRANSPORTATION

ROUTE NO.	SECTION	COUNTY	TOTAL SHEETS	SHEET NO.	SHEET NO. 36 41 SHEETS
FAP 623	X-IBR	LaSalle	126	91	
FED. ROAD DIST. NO. 7	ILLINOIS	FED. AID PROJECT			

Contract #66617



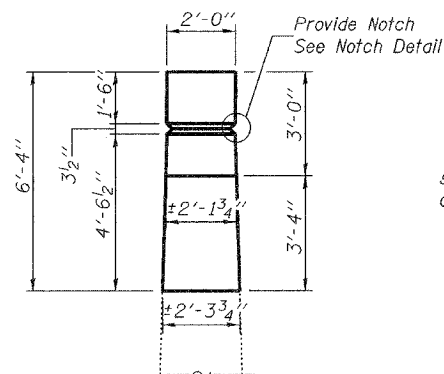
PLAN



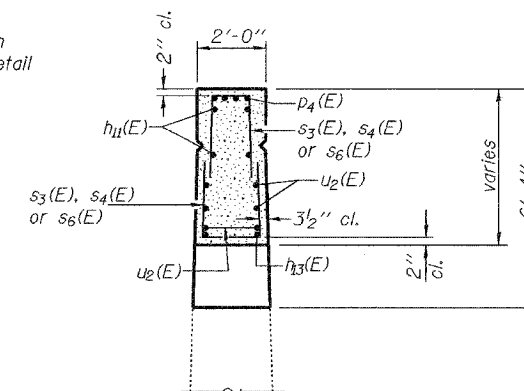
ELEVATION

(Looking East at Piers 1 and 2)

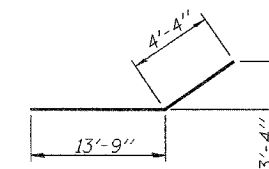
Location	Pier 1	Pier 2
Elevation A	489.95	488.93
Elevation B	490.10	489.08
Elevation C	490.21	489.22



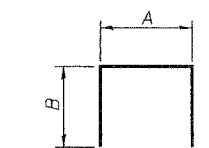
VIEW A-A  
(Looking South)



SECTION B-B  
(Looking South)

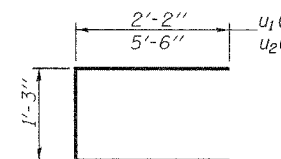


BAR  $h_{13}(E)$

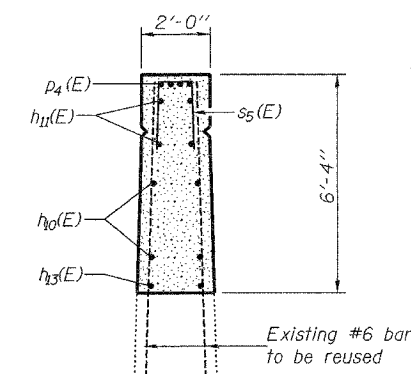


BARS  $s_3(E), s_4(E), s_5(E) \& s_6(E)$

	A	B
$s_3(E)$	1'-5"	2'-9"
$s_4(E)$	1'-5"	4'-3"
$s_5(E)$	1'-5"	2'-2"
$s_6(E)$	1'-5"	3'-6"



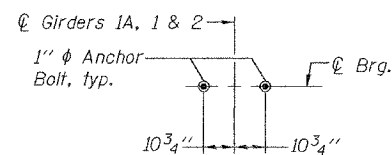
BARS  $u_1(E) \& u_2(E)$



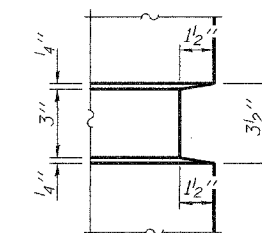
SECTION C-C  
(Looking South)

TWO PIERS  
BILL OF MATERIAL

Bar	No.	Size	Length	Shape
$h_{10}(E)$	12	#5	13'-9"	—
$h_{11}(E)$	8	#5	17'-1"	—
$h_{12}(E)$	24	#5	2'-11"	—
$h_{13}(E)$	4	#5	18'-1"	—
$p_4(E)$	8	#7	17'-1"	—
$s_3(E)$	8	#5	6'-11"	□
$s_4(E)$	20	#5	9'-11"	□
$s_5(E)$	28	#5	5'-9"	□
$s_6(E)$	8	#5	8'-5"	□
$u_1(E)$	8	#5	5'-7"	□
$u_2(E)$	6	#5	12'-3"	□
Concrete Structures		Cu. Yd.		16.0
Reinforcement Bars, Epoxy Coated		Pound		1370



DETAIL A



NOTCH DETAIL

\*Epoxy grout  $h_{12}(E)$  bars in 9" min. drilled holes according to Article 584 of the Standard Specifications. Space drilled holes in existing cap to miss existing reinforcement. Cost included with Reinforcement Bars, Epoxy Coated.

Notes:  
See sheet 29 of 41 for Concrete Removal Details.  
See sheet 26 of 41 for Anchor Bolt Installation.  
Space reinforcement in cap to miss anchor bolts.  
Pour steps monolithically with cap.

DESIGNED	F.T.
CHECKED	S.M.R.
DRAWN	BECKY M. LEACH
CHECKED	F.T./S.M.R.

EXAMINED	February 1, 2007	Thomas J. Domagala
PASSED		Ralph E. Anderson

PIERS  
F.A.P. ROUTE 623 - SECTION X-IBR  
LaSALLE COUNTY  
STATION 1036+60.72  
STRUCTURE NO. 050-0094