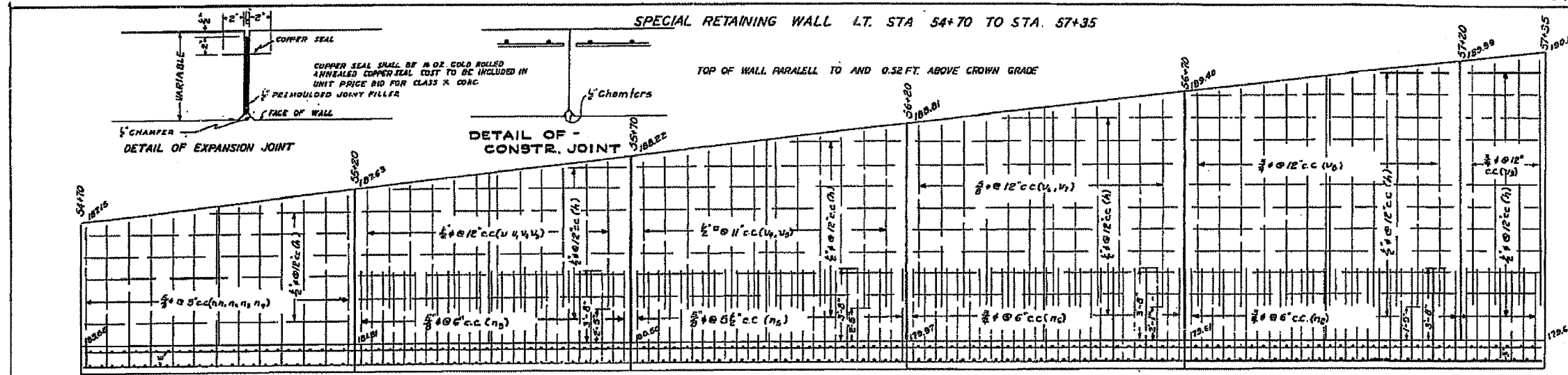


NOTE: INFORMATION FOR RETAINING WALL EAST OF STRUCTURE UNAVAILABLE

F.A.P. RTE.	SECTION	COUNTY	TOTAL SHEETS	SHEET NO.
623		LASALLE	126	97
STA.		TO STA.		
FED. ROAD DIST. NO.		ILLINOIS FED. AID PROJECT		
*(34)R, DM & (X-1)RS, & BR				

ROUTE 7 SEC 34 LA SALLE CO.

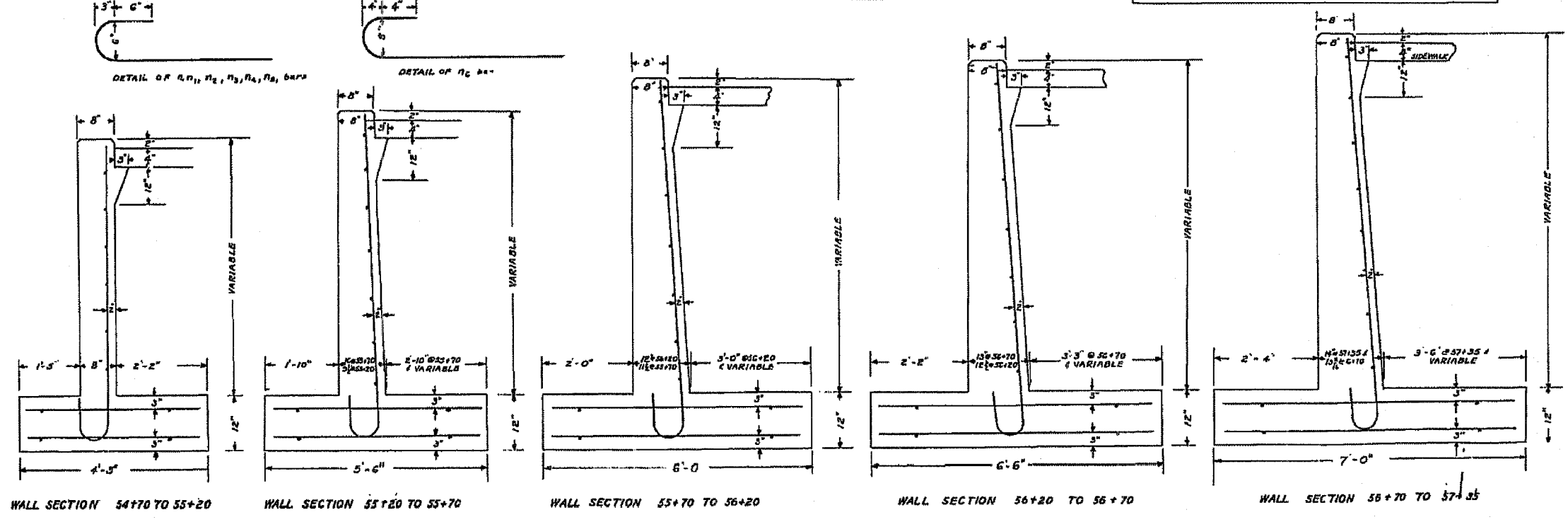
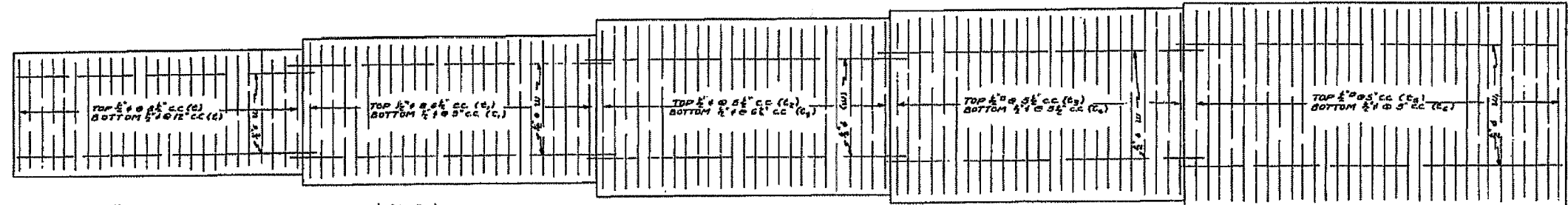


ITEM NO.	DESCRIPTION	QUANTITY	UNIT	PRICE	TOTAL
7	3d	LA SALLE	3d	25	

BAR NO.	SIZE	LENGTH
h	8d	24'-6"
h1	10	14'-6"
n	15	5'-6"
n1	15	4'-0"
n2	15	6'-6"
n3	15	7'-0"
n4	7	7'-3"
n5	210	5'-6"
n6	230	5'-6"
v	12	3'-6"
v1	12	4'-0"
v2	13	4'-6"
v3	13	5'-0"
v4	27	5'-6"
v5	27	6'-0"
v6	25	7'-0"
v7	25	7'-6"
v8	50	8'-3"
v9	15	8'-6"
t	121	6'-0"
t1	189	5'-3"
t2	202	5'-3"
t3	110	6'-3"
t4	110	6'-3"
t5	156	6'-3"
t6	156	6'-3"
w	32	25'-3"
w1	12	23'-0"

REINFORCEMENT BARS 11590
CLASS X CONC. 1240 CU YD.

PREMOLDED JOINT FILLER EXPANSION JOINT WITH COPPER SEAL AT STA. 55+20-56+70-56+20 & 57+20 & 55+70
CONSTRUCTION JOINTS AT STA 54+95-55+45-55+95-56+45 AND 56+95



FOR INFORMATION ONLY

EXISTING RETAINING WALL