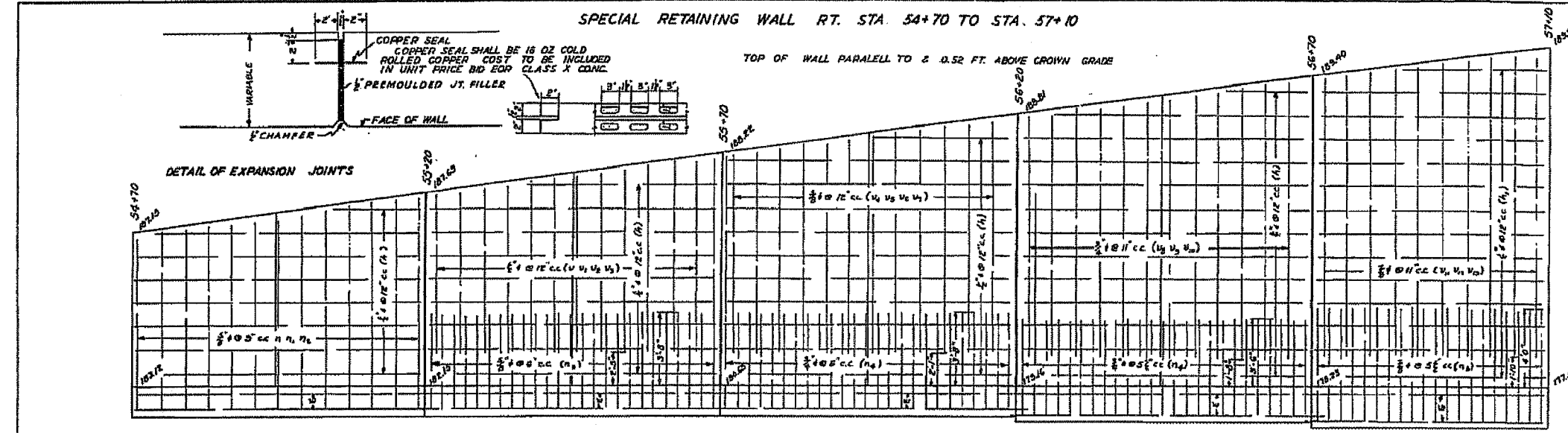


F.A.P. RTE.	SECTION	COUNTY	TOTAL SHEETS	SHEET NO.
623		LASALLE	126	98
STA.		TO STA.		
FED. ROAD DIST. NO.		ILLINOIS FED. AID PROJECT		
*(34)R, DM & (X-1)RS, & BR				

ROUTE 7 SEC. 34 LA SALLE CO.



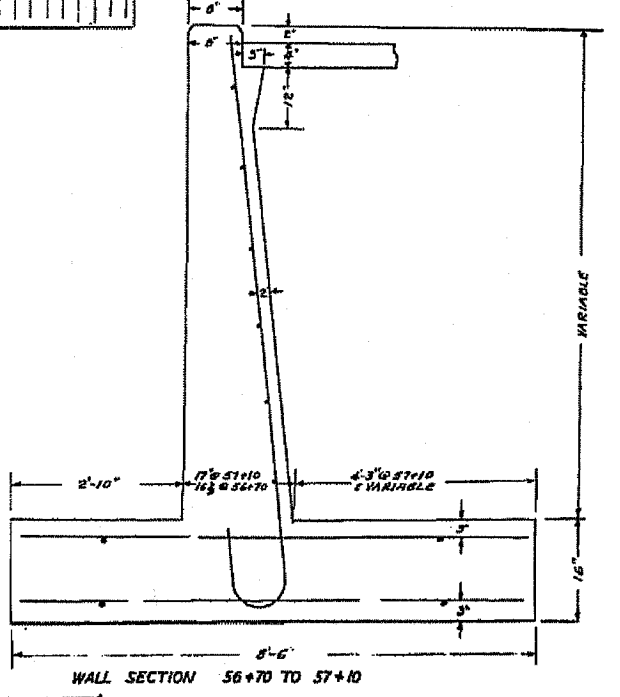
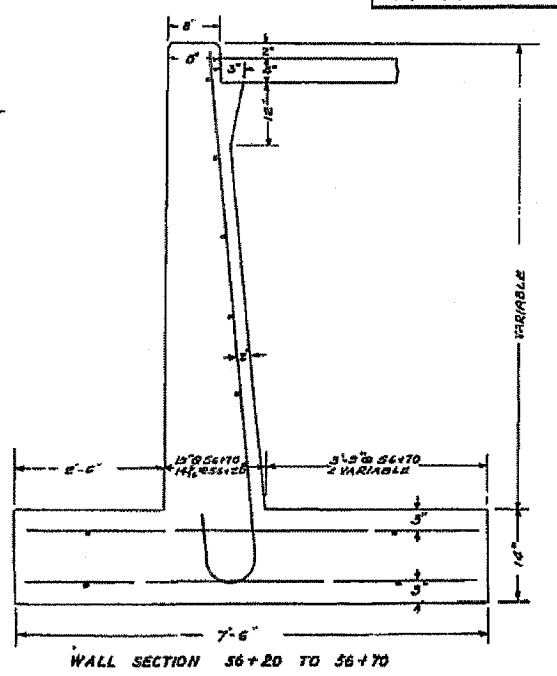
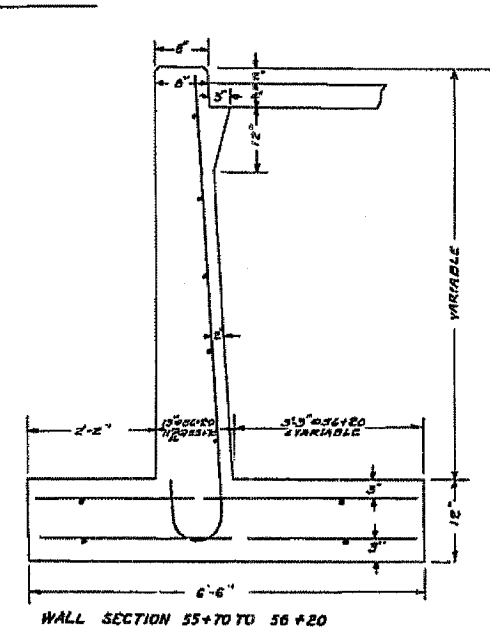
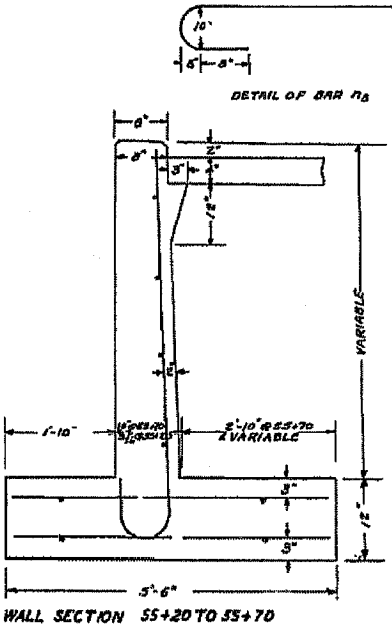
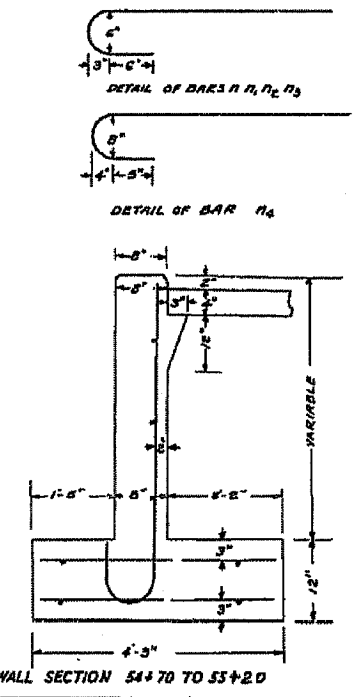
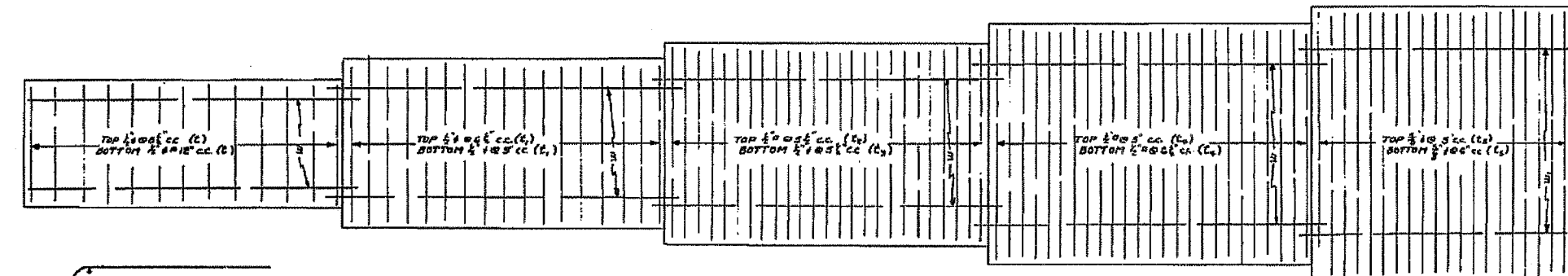
SECTION	COUNTY	TOTAL SHEETS	SHEET NO.
7 34	La Salle	34	26

**BILL OF MATERIAL**

BAR	NO.	SIZE	LENGTH
n	23	3/8"	6'-0"
n1	22	3/8"	6'-6"
n2	22	3/8"	7'-0"
n3	100	3/8"	5'-6"
n4	209	3/8"	5'-6"
n5	98	3/8"	5'-3"
v	15	3/8"	3'-3"
v1	15	3/8"	3'-9"
v2	12	3/8"	4'-3"
v3	12	3/8"	4'-9"
v4	13	3/8"	5'-0"
v5	13	3/8"	5'-3"
v6	12	3/8"	5'-3"
v7	12	3/8"	5'-3"
v8	18	3/8"	5'-3"
v9	12	3/8"	5'-3"
v10	15	3/8"	5'-6"
v11	15	3/8"	5'-9"
v12	14	3/8"	10'-3"
h	63	3/8"	24'-6"
h1	23	3/8"	20'-0"
w	32	3/8"	26'-3"
w1	8	3/8"	21'-0"
c	121	3/8"	4'-0"
c1	128	3/8"	5'-3"
c2	109	3/8"	6'-3"
c3	109	3/8"	6'-3"
c4	212	3/8"	7'-3"
c5	176	3/8"	8'-3"

REINFORCEMENT BARS 12,760  
CLASS X CONC. 125.4 cu yds

PREMOULDED JOINT FILLER EXPANSION JOINT WITH COPPER SEAL AT STA. 55+20-55+70-56+20 & 56+70  
CONSTRUCTION JOINTS AT STA 54+96-55-45-55-95 AND 56+45



WALL SECTION 54+70 TO 55+20

WALL SECTION 55+20 TO 55+70

WALL SECTION 55+70 TO 56+20

WALL SECTION 56+20 TO 56+70

WALL SECTION 56+70 TO 57+10

FOR INFORMATION ONLY

EXISTING RETAINING WALL