

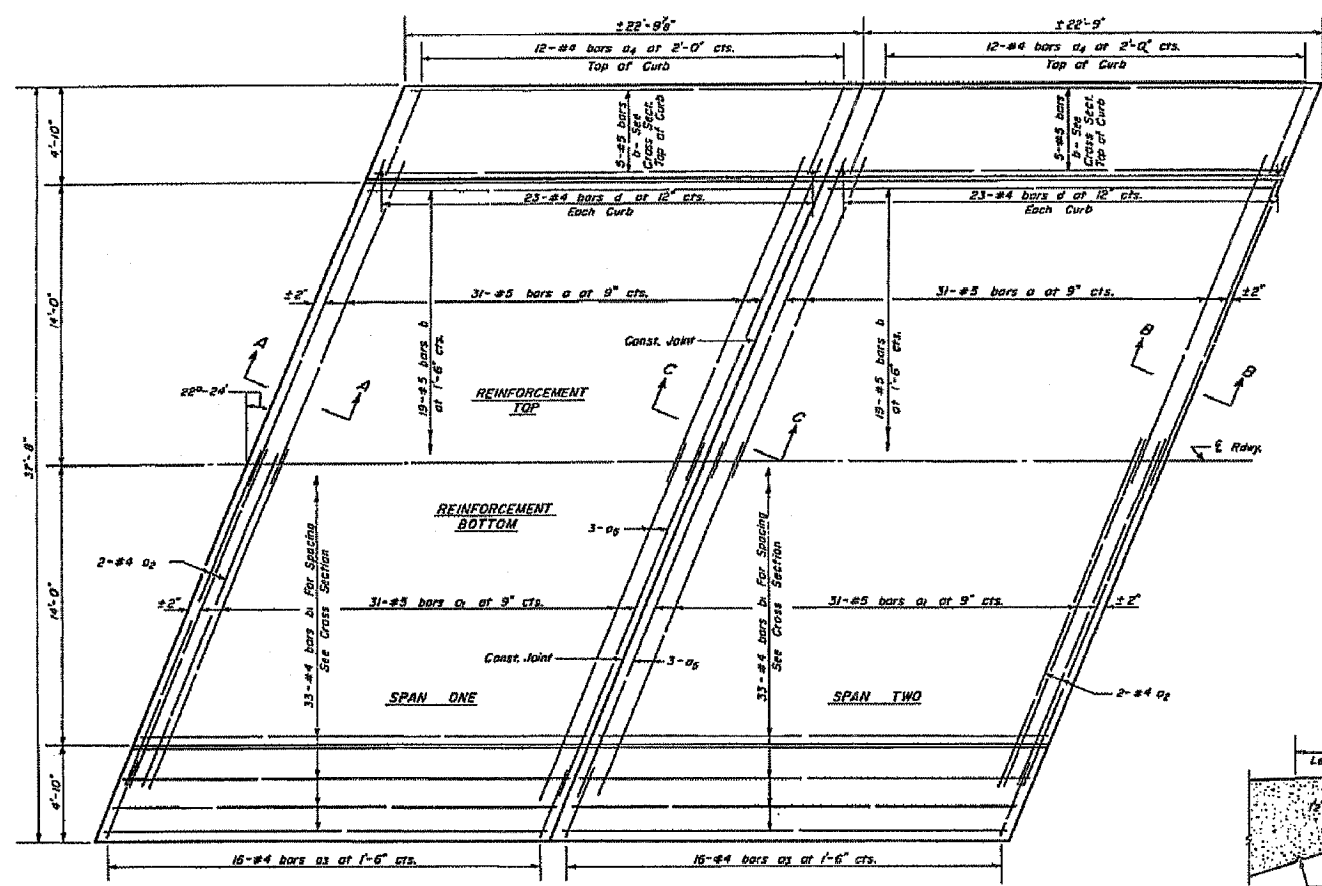
F.A.P. RTE.	SECTION	COUNTY	TOTAL SHEETS	SHEET NO.
623	*	LASALLE	126	100
STA.		TO STA.		
FED. ROAD DIST. NO.		ILLINOIS FED. AID PROJECT		

*134R, DM & (X-1)RS, & BR

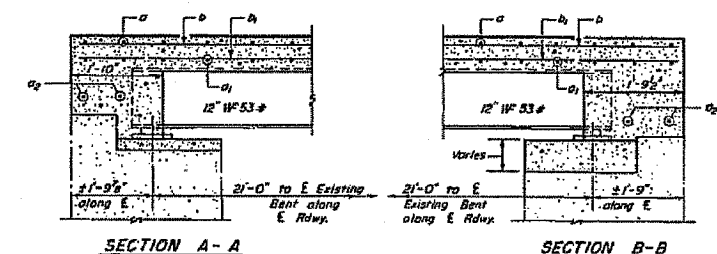
STATE OF ILLINOIS
DEPARTMENT OF PUBLIC WORKS & BUILDINGS
DIVISION OF HIGHWAYS

DATE	REVISION	BY	DATE	SHEET NO.
7	34-1	L. A. Sella	12	8

SHEET NO 2
4 SHEETS

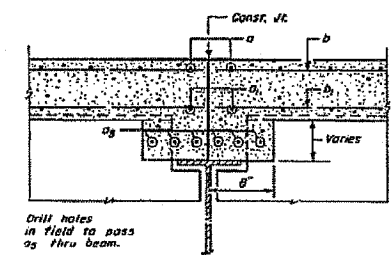


PLAN

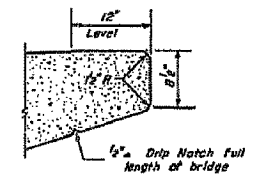


SECTION A-A

SECTION B-B



SECTION C-C

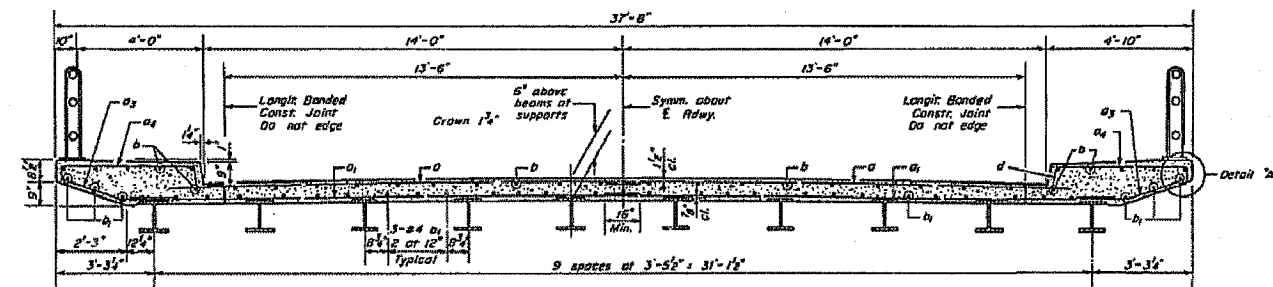


DETAIL 'A'

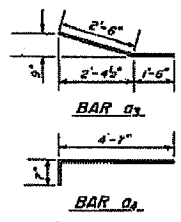
BILL OF MATERIAL

Bar	No	Size	Length	Shape
a	124	#5	17'-0"	—
a1	124	#5	18'-9"	—
a2	8	#4	20'-9"	—
a3	64	#4	4'-0"	—
a4	48	#4	3'-2"	—
a5	12	#4	18'-0"	—
b	38	#5	22'-6"	—
b1	66	#4	22'-6"	—
d	92	#4	1'-0"	—
p	6	#6	14'-9"	—
p1	6	#8	16'-9"	—

* Class X Concrete Cu. Yd. 52.5
* Reinforcement Bars Lb. 7910
* Quantities include Abutment Caps



CROSS SECTION



BAR a3

BAR a4

DESIGNED	<i>James J. Murray</i>	EXAMINED	<i>M. A. Sells</i>
CHECKED	<i>R. C. Sanderson</i>	PASSED	
DRAWN	<i>W. A. Salsomoni</i>	APPROVED	
CHECKED	<i>James J. Murray</i>		

MARCH 3 10 58

SUPERSTRUCTURE
I.C. RR OVERHEAD
S.B.I. RT. 7 SECTION 34-1
LA SALLE COUNTY
STATION 57+67.42

FOR INFORMATION ONLY

EXISTING SN 050-0095