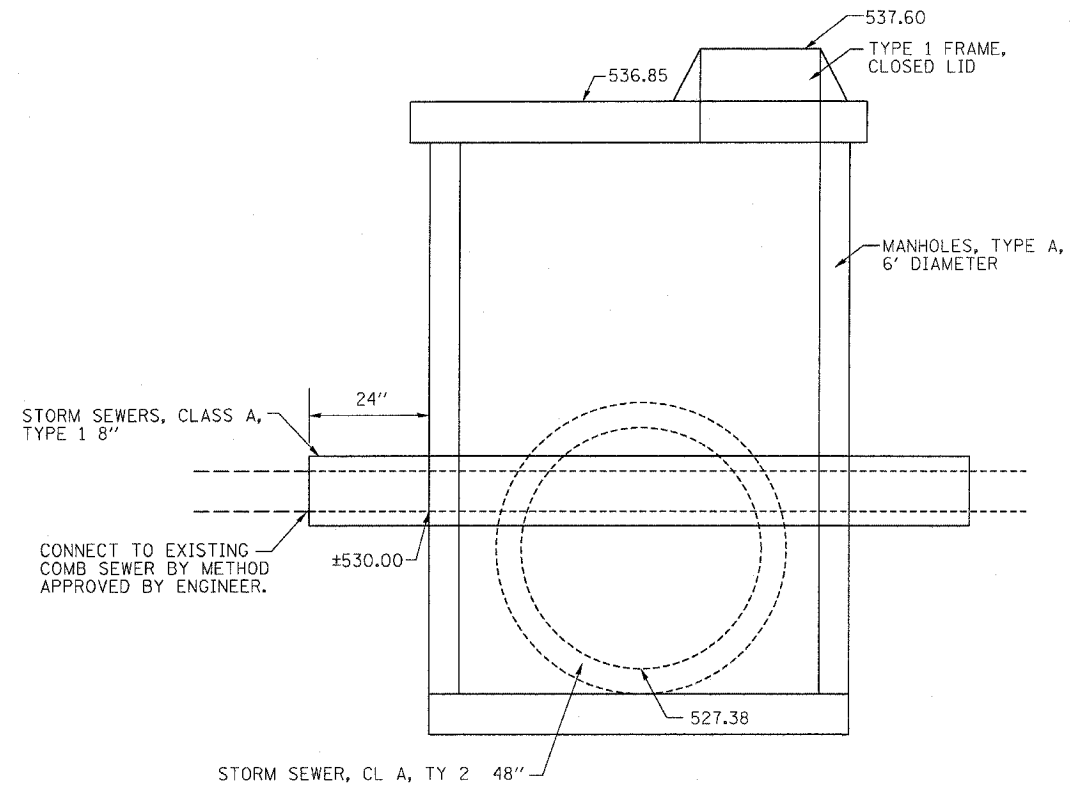
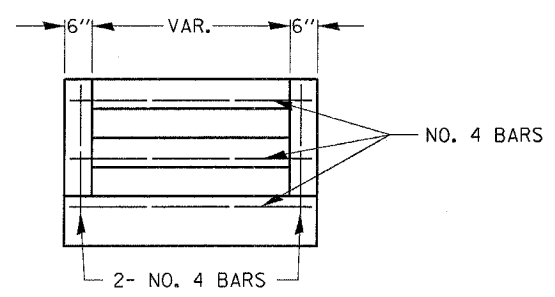


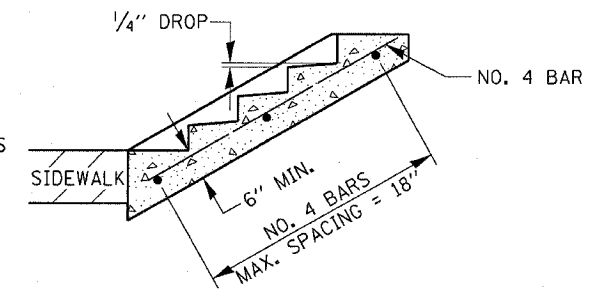
F.A.P. RTE.	SECTION	COUNTY	TOTAL SHEETS	SHEET NO.
623		LASALLE	126	106
STA.		TO STA.		
FED. ROAD DIST. NO.		ILLINOIS FED. AID PROJECT		
*(34)R,DM&(X)-DRS&BR				



11B CONFLICT MANHOLE DETAIL
STA. 1022+54.7, 28.6' RT.



END ELEVATION



SECTION A-A

TABLE OF TREADS & RISERS

SLOPE	TREAD	RISER
2:1	12	6"
3:1	15"	5"
4:1	17"	4 1/4"

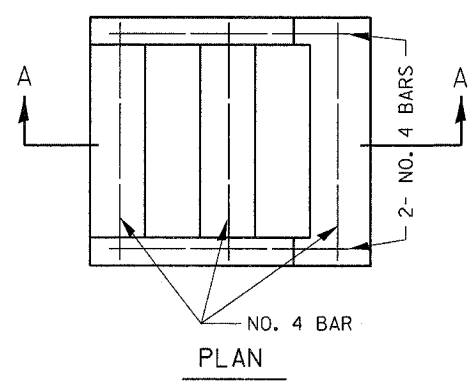
WHERE SLOPES FALL BETWEEN THOSE SHOWN IN THE TABLE ABOVE, THE STAIR RAIL SHOULD FIT THE SLOPE AND THE TREAD IN INCHES x THE RISER IN INCHES SHOULD BE BETWEEN 72 AND 78.

EXAMPLE:

FOR A 4:1 SLOPE USE $y = \text{RISER HEIGHT}$ $4y^2 = 75"$.
SOLVING $y^2 = \frac{75}{4}$, $y = 4.3"$ (USE 4 1/4" FOR CONVENIENCE.)
TREAD WOULD THEN BE $4 1/4" \times 4 = 17"$

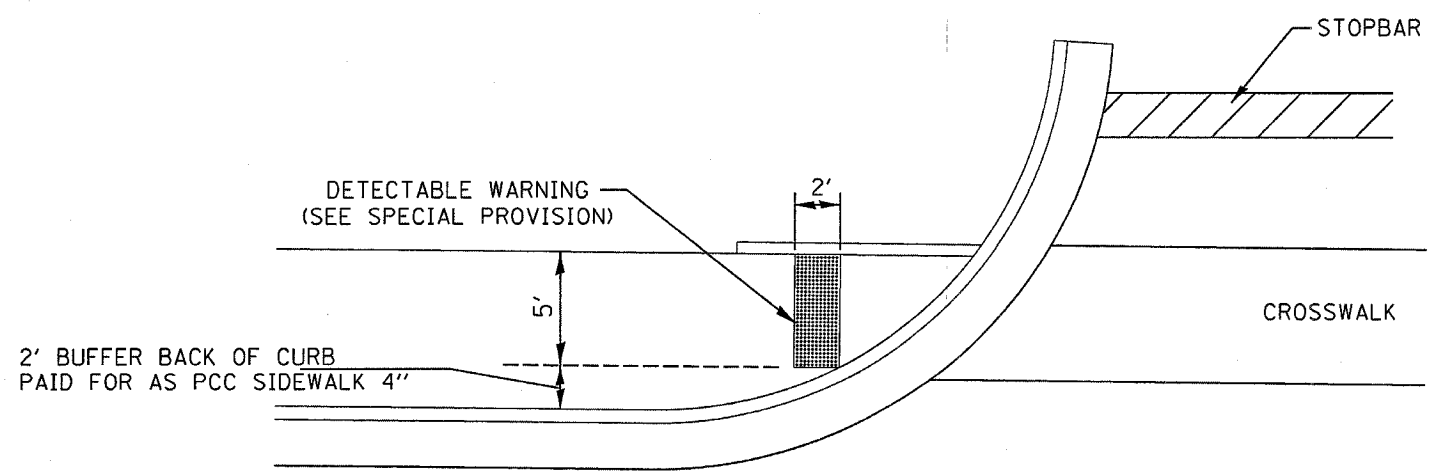
REINFORCEMENT BARS WILL BE PAID FOR AT THE CONTRACT UNIT PRICE PER POUND FOR REINFORCEMENT BARS.

CLASS SI CONCRETE SHALL BE USED THROUGHOUT, AND WILL BE PAID FOR AT THE CONTRACT UNIT PRICE PER CUBIC YARD FOR CONCRETE STEPS.



PLAN

DETAIL OF CONCRETE STEPS



ADA RAMP/DETECTABLE WARNING DETAIL

SEE HIGHWAY STANDARD FOR ADDITIONAL REQUIREMENTS

REVISIONS	
NAME	DATE

ILLINOIS DEPARTMENT OF TRANSPORTATION

DETAILS

SCALE: VERT. HORIZ. DATE

DRAWN BY CHECKED BY