

D-93-028-06

STATE OF ILLINOIS  
DEPARTMENT OF TRANSPORTATION  
DIVISION OF HIGHWAYS

# PROPOSED ROADWAY LIGHTING PLANS FEDERAL-AID URBAN PROJECT

F.A.U. ROUTE 5605 (U.S. ROUTE 6)  
SECTION (TX-1, 17)L  
PROJECT HSIP-M-5605(001)  
BUREAU AND LASALLE COUNTIES  
C-93-051-06

**INDEX OF SHEETS**

1. TITLE SHEET
2. GENERAL NOTES AND SUMMARY OF CONTENTS
- 3-5. LIGHTING PLANS - U.S. 6
- 6-7. LIGHTING PLANS - U.S. 6 AT IL-251 INTERCHANGE
8. SINGLE LINE DIAGRAM
- 9-12. LIGHTING DETAILS
- 13-14. BORING LOGS

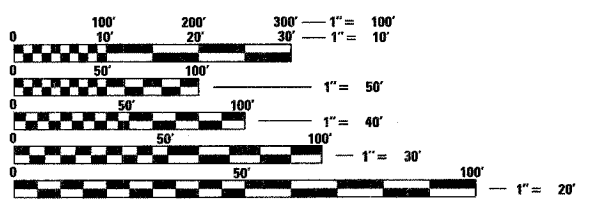
**LIST OF HIGHWAY STANDARDS**

- 000001- STANDARD SYMBOLS, ABBREVIATIONS AND PATTERNS
- 442201- CLASS C AND D PATCHES
- 701502- URBAN LANE CLOSURE, 2L 2W WITH BIDIRECTIONAL LEFT TURN LANE
- 701606- URBAN LANE CLOSURE, MULTILANE, 2W WITH MOUNTABLE MEDIAN
- 701701- URBAN LANE CLOSURE, MULTILANE INTERSECTION
- 702001- TRAFFIC CONTROL DEVICES

**TRAFFIC DATA**

**LOCATION #1**  
U.S. ROUTE 6 EXISTING ADT = 13,300 (2005)

**LOCATION #2**  
U.S. ROUTE 6 EXISTING ADT = 15,100 (2005)  
ILLINOIS 251 EXISTING ADT = 12,000 (2005)

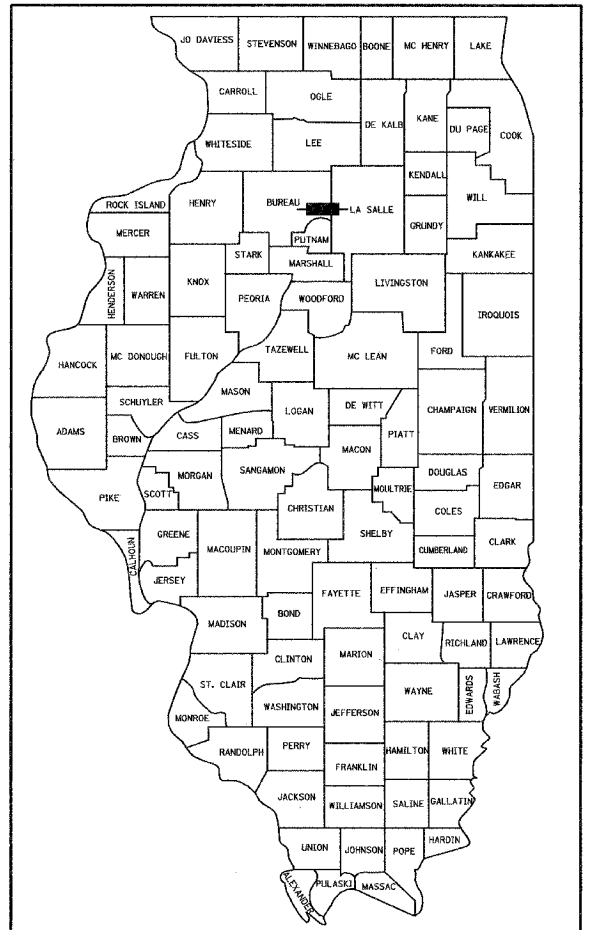


FULL SIZE PLANS HAVE BEEN PREPARED USING STANDARD ENGINEERING SCALES, REDUCED SIZED PLANS WILL NOT CONFORM TO STANDARD SCALES, IN MAKING MEASUREMENTS ON REDUCED PLANS, THE ABOVE SCALES MAY BE USED.

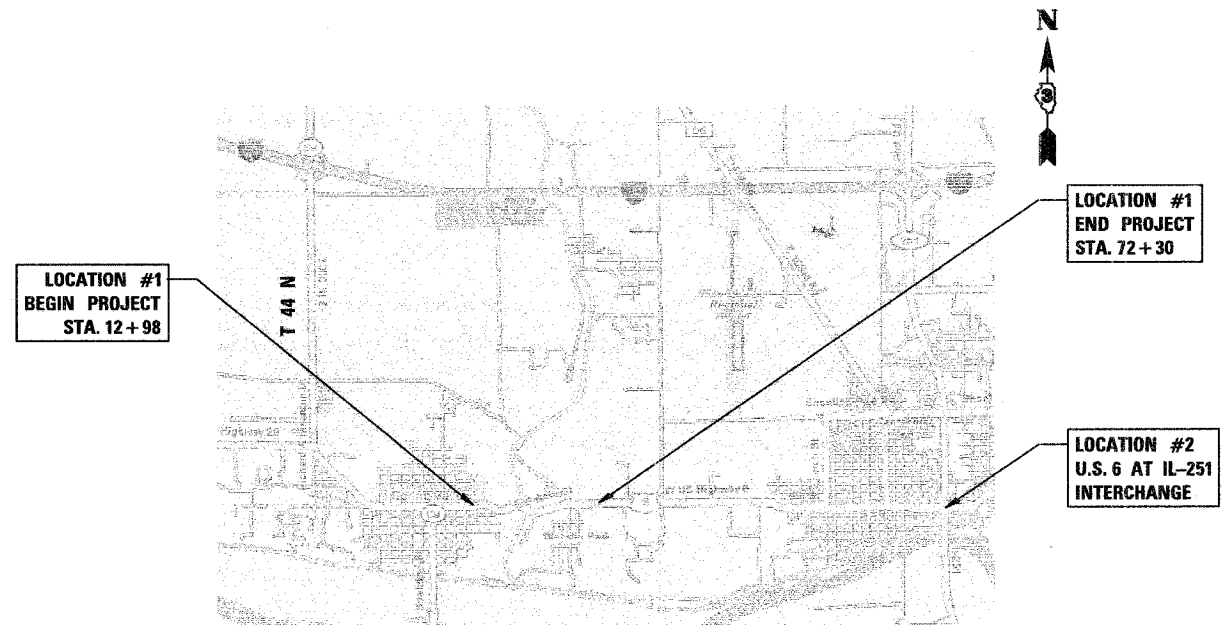
J.U.L.I.E  
JOINT UTILITY LOCATION INFORMATION FOR EXCAVATION  
1-800-892-0123

PROJECT ENGINEER - JOE KANNEL  
UNIT CHIEF - PAT BRABOY  
TOWNSHIP: HALL

CONTRACT NO. 66642

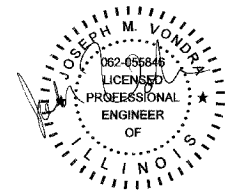


LOCATION OF SECTION INDICATED THUS: - [black rectangle] -



LOCATION MAP  
NOT TO SCALE

GROSS AND NET LENGTH OF PROJECT = 5,932 FT = 1.12 MI.



DATE: 12/19/2006  
SEAL EXPIRES: 11/30/2008

STATE OF ILLINOIS  
DEPARTMENT OF TRANSPORTATION  
DIVISION OF HIGHWAYS

SUBMITTED Feb 20 20 06  
Diane O. Kaska  
DEPUTY DIRECTOR, REGION ENGINEER

February 2, 2007  
Eric E. Harjo  
INTERIM ENGINEER OF DESIGN AND ENVIRONMENT

February 2, 2007  
Milton R. Sewell  
DIRECTOR OF HIGHWAYS, CHIEF ENGINEER

**Ciorba Group, Inc.**

DESIGN FIRM  
REGISTRATION NUMBER  
184-001016  
CONSULTING ENGINEERS  
SUITE 402, 5507 NORTH CUMBERLAND AVE  
CHICAGO, ILLINOIS 60656 :: (773) 775-4009

PLANS PREPARED BY: CIORBA GROUP  
PRINTED BY THE AUTHORITY OF THE STATE OF ILLINOIS