

F.A.P. RTE.	SECTION	COUNTY	TOTAL SHEETS	SHEET NO.
697	(17, 18) I	FORD	9	6
STA. _____		TO STA. _____		
FED. ROAD DIST. NO.	ILLINOIS	FED. AID PROJECT		

"TIE POINT"

TO

LAND SURVEY MONUMENTS SITUATED IN SECTION(S) 11 & 14, TOWNSHIP 23N
 RANGE 8E, OF THE 3RD, PRINCIPAL MERIDIAN, FORD
 COUNTY, ILLINOIS.

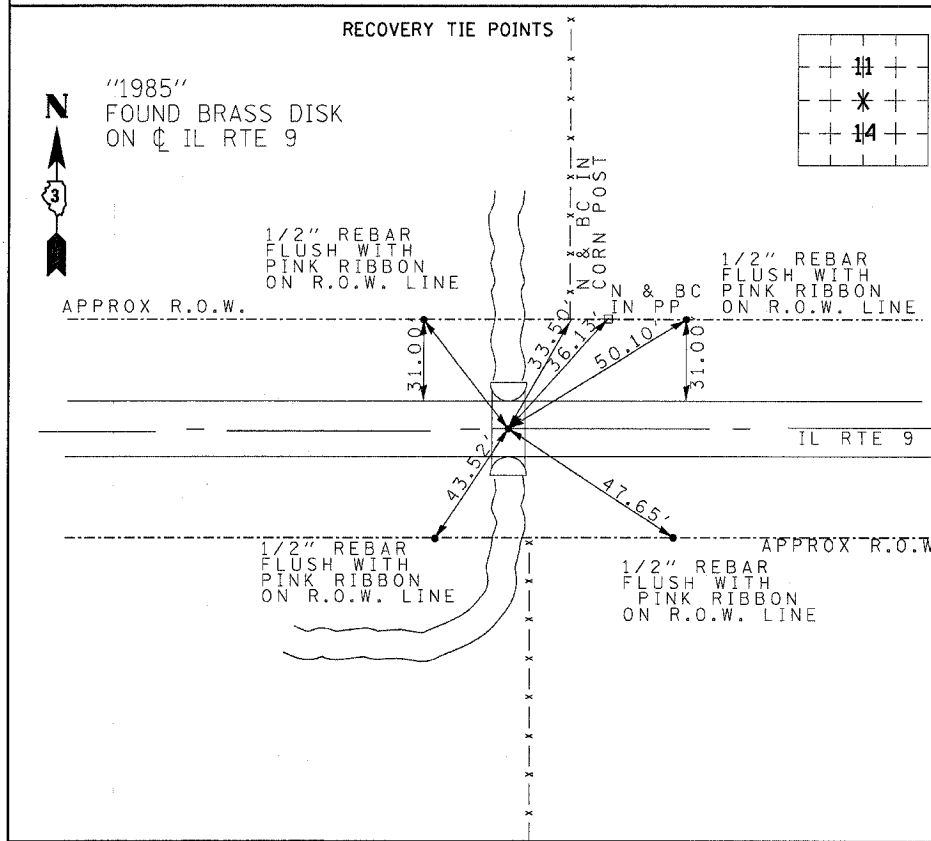
MONUMENT DESCRIPTION AND REMARKS: SET BRONZE PLAQUE - 1/4 SECTION
OF SECTION 11 AND 14. OVER 3/4" IRON PIN ILS 1718

"TIE POINT"

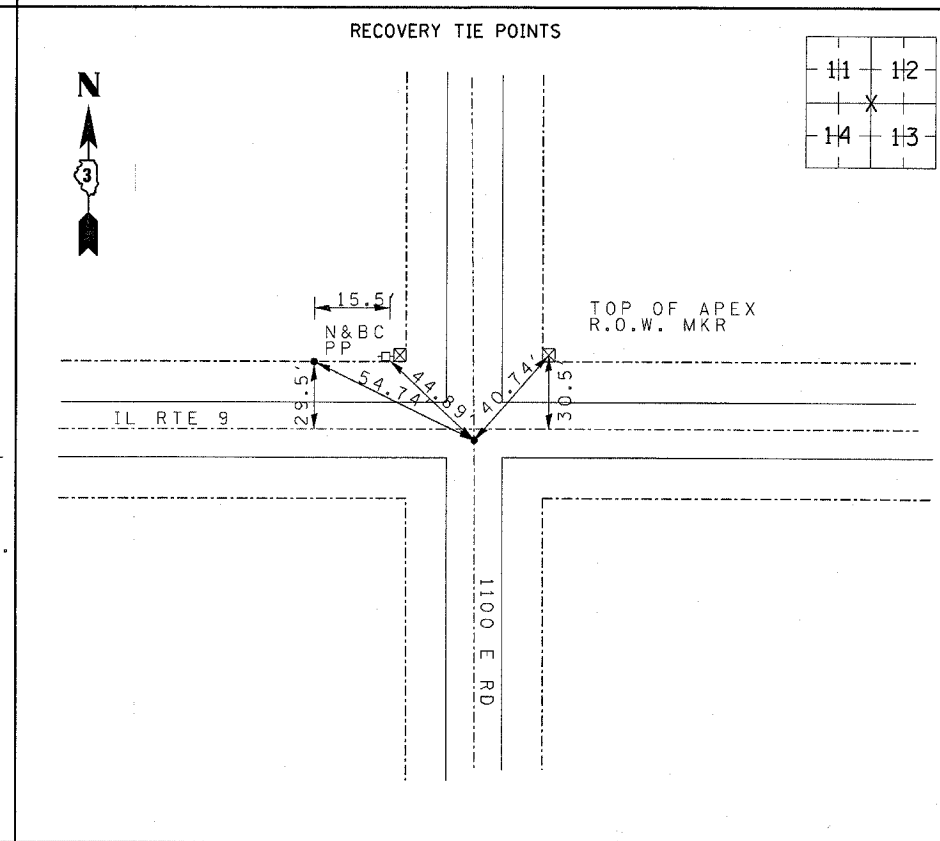
TO

LAND SURVEY MONUMENTS SITUATED IN SECTION(S) 11,12,13,&14, TOWNSHIP 23N
 RANGE 8E, OF THE 3RD, PRINCIPAL MERIDIAN, FORD
 COUNTY, ILLINOIS.

MONUMENT DESCRIPTION AND REMARKS: EXISTING MONUMENT - 1/2" IRON PIPE
REPLACED WITH BRONZE PLAQUE-SECTION CORNER OF
SECTIONS 11,12,13,&14



PERMANENT SURVEY MARKER, TY I



PERMANENT SURVEY MARKER, TY I