

F.A.P. RTE.	SECTION	COUNTY	TOTAL SHEETS	SHEET NO.
697	(17, 18) I	FORD	9	7

STA.	TO STA.	FED. ROAD DIST. NO.	ILLINOIS	FED. AID PROJECT

"TIE POINT"

TO

LAND SURVEY MONUMENTS SITUATED IN SECTION(S) 7,8,17,&18 , TOWNSHIP _____
 RANGE _____ , OF THE 3RD , PRINCIPAL MERIDIAN, _____
 COUNTY, ILLINOIS.

MONUMENT DESCRIPTION AND REMARKS: SET BRONZE PLAQUE - SECTION CORNER
 SECTIONS 7,8,17,&18 IL RTE 9 STA 299+52.2 - 5.15'RT

"TIE POINT"

TO

LAND SURVEY MONUMENTS SITUATED IN SECTION(S) 17 , TOWNSHIP T23N
 RANGE 9E , OF THE _____ , PRINCIPAL MERIDIAN, FORD
 COUNTY, ILLINOIS.

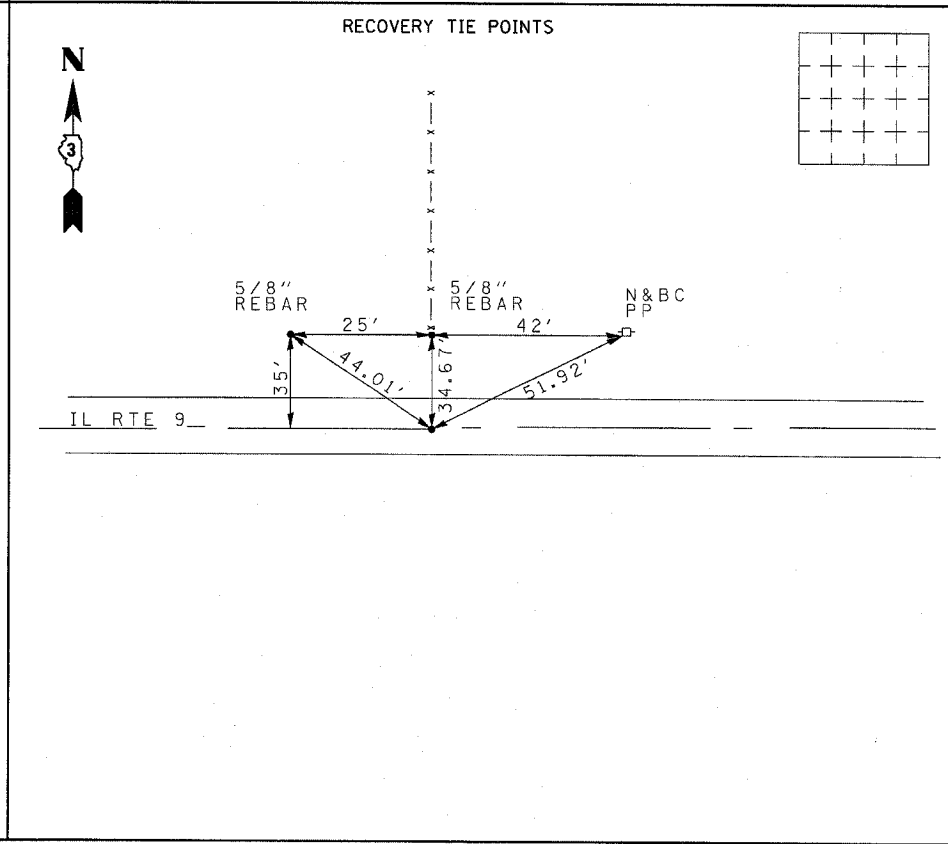
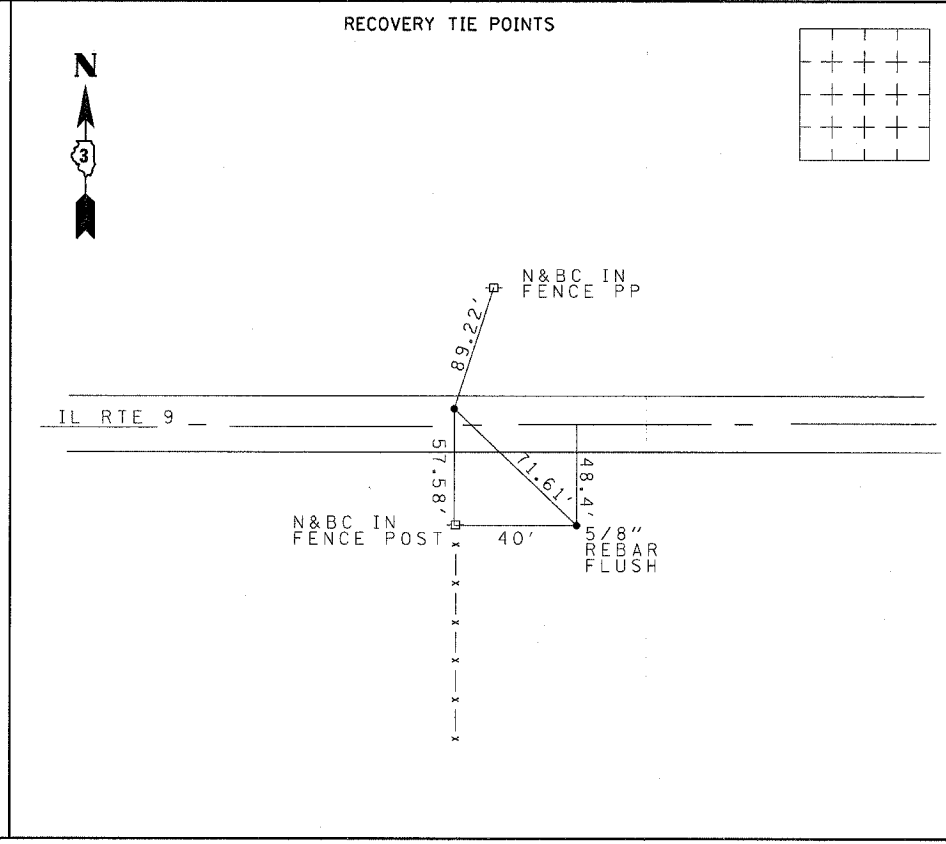
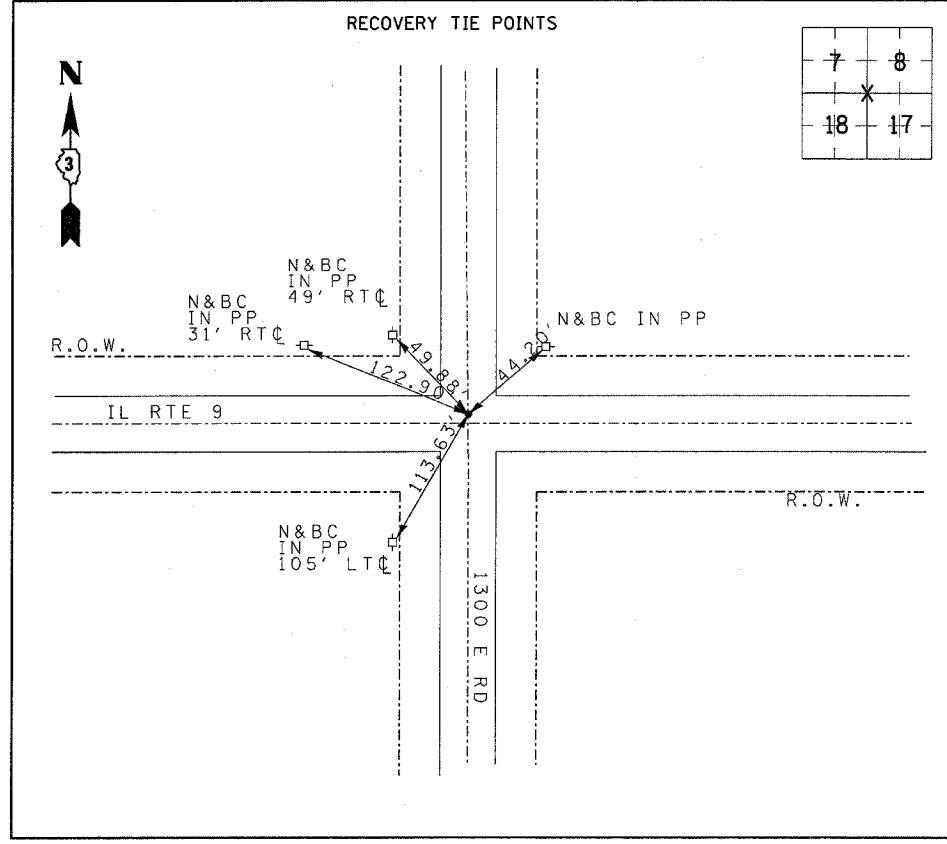
MONUMENT DESCRIPTION AND REMARKS: FOUND PK NAIL & WASHER
 9.35' NO. Ⓞ IL RTE 9 COULD
 REPRESENT N 1/4 SEC 17 T23N R9E

"TIE POINT"

TO

LAND SURVEY MONUMENTS SITUATED IN SECTION(S) 13 , TOWNSHIP T23
 RANGE 8E , OF THE _____ , PRINCIPAL MERIDIAN, FORD
 COUNTY, ILLINOIS.

MONUMENT DESCRIPTION AND REMARKS: FOUND PK NAIL 0.3' SO. Ⓞ IL 9
 COULD REPRESENT N 1/4 SEC 13 T23N R8E



PERMANENT SURVEY
 MARKER, TY I