

F.A.P. RTE.	SECTION	COUNTY	TOTAL SHEETS	SHEET NO.
697	(17, 18) I	FORD	9	1

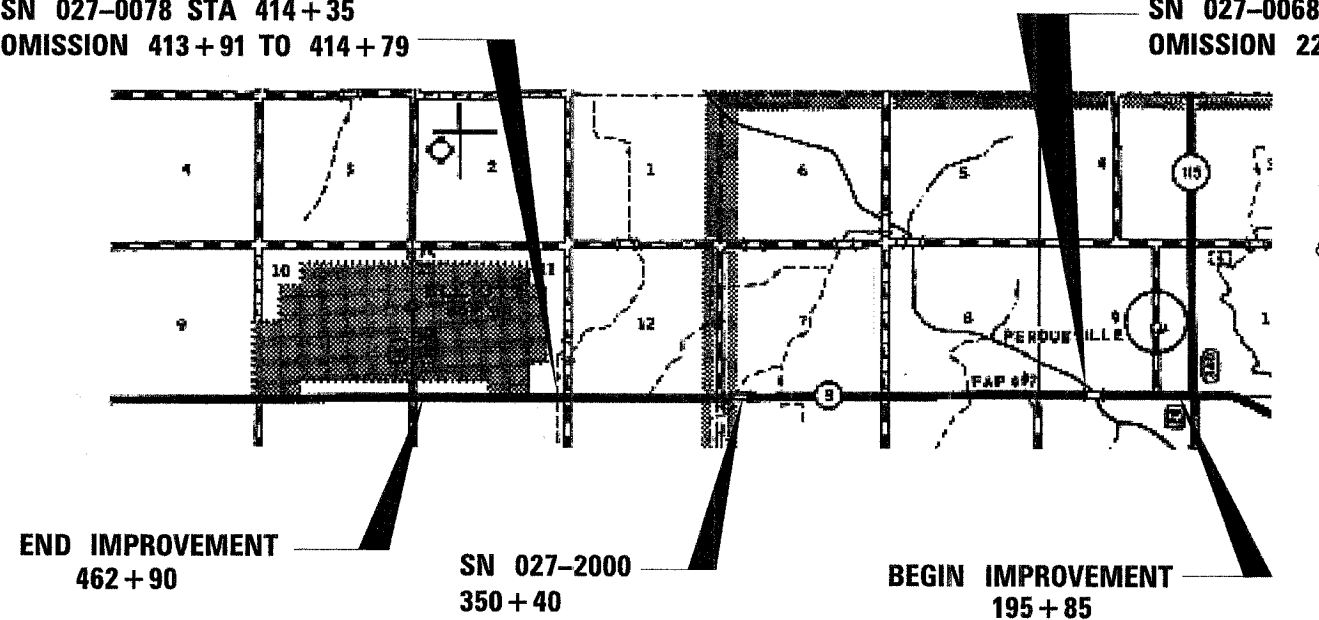
STATE OF ILLINOIS
 DEPARTMENT OF TRANSPORTATION
 DIVISION OF HIGHWAYS
**PROPOSED
 HIGHWAY PLANS**

FAP ROUTE 697 (IL 9)
 SECTION (17, 18) I
 PROJECT
 FORD COUNTY

C-93-095-06
 CAPE SEAL RESURFACING FROM
 JUST WEST OF IL 115 TO
 JUST EAST OF MAIN ST IN ELLIOTT

SN 027-0078 STA 414+35
 OMISSION 413+91 TO 414+79

SN 027-0068 STA 227+00
 OMISSION 229+68 TO 225+82



LOCATION MAP

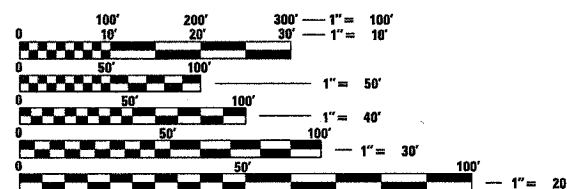
NOT TO SCALE
 GROSS LENGTH = 26705 FT = 5.058 MILES
 NET LENGTH = 26231 FT = 4.968 MILES

INDEX OF SHEETS

- 1 COVER SHEET
- 2 GENERAL NOTES
- 3 SUMMARY OF QUANTITIES
- 4 TYPICAL SECTIONS
- 5 SCHEDULES
- 6 TIE POINTS
- 7-8 PROJECT LAYOUT
- 9 MISC DETAILS

STANDARDS

- 000001-04 STANDARD SYMBOLS, ABBREVIATIONS AND PATTERNS
- 667101 PERMANENT SURVEY MARKERS
- 701301-02 LANE CLOSURE, 2L, 2W, SHORT TIME OPERATIONS
- 701306-01 LANE CLOSURE, 2L, 2W, SLOW MOVING OPERATIONS DAY ONLY, FOR SPEEDS ≥ 45 MPH
- 701311-02 LANE CLOSURE, 2L, 2W, MOVING OPERATIONS - DAY ONLY
- 702001-06 TRAFFIC CONTROL DEVICES
- 780001-01 TYPICAL PAVEMENT MARKINGS
- 781001-02 TYPICAL APPLICATIONS RAISED REFLECTIVE PAVEMENT MARKERS



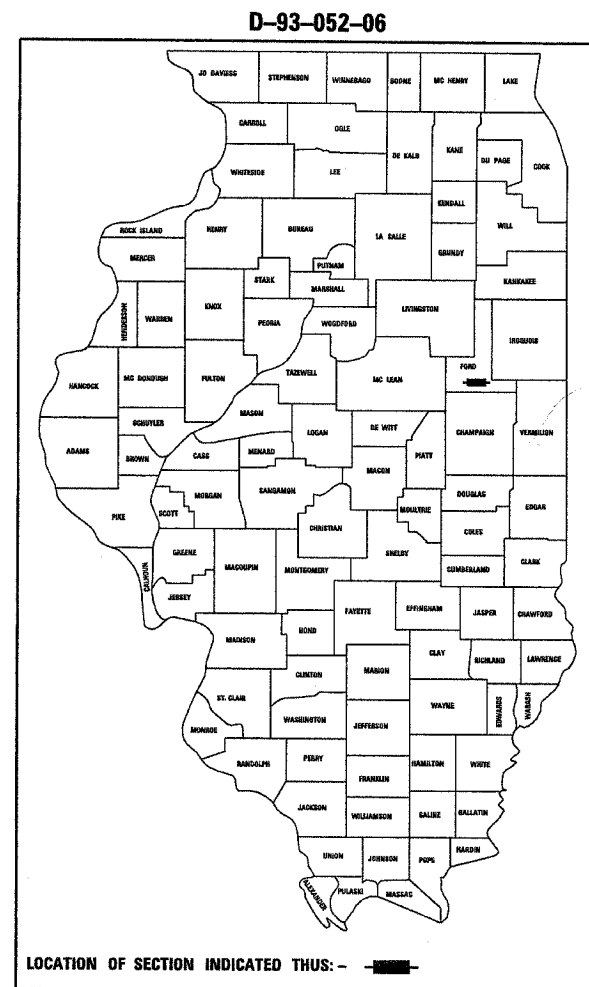
FULL SIZE PLANS HAVE BEEN PREPARED USING STANDARD ENGINEERING SCALES. REDUCED SIZED PLANS WILL NOT CONFORM TO STANDARD SCALES. IN MAKING MEASUREMENTS ON REDUCED PLANS, THE ABOVE SCALES MAY BE USED.

JULIE 1-800-892-0123

DISTRICT 3 NO. (815) 434-6131

PROJECT ENGINEER: JOE KANNEL
 UNIT CHIEF: MICHELE LINDEMANN
 TOWNSHIP: DIX, PATTON

CONTRACT NO. 66679



RURAL MINOR ARTERIAL

2007 ADT = 1,700
 P.V. = 90.0%
 S.U. = 4.7%
 M.U. = 5.3%

STATE OF ILLINOIS
 DEPARTMENT OF TRANSPORTATION
 DIVISION OF HIGHWAYS

SUBMITTED 12-15 2006
Devin O'Keefe
 DEPUTY DIRECTOR OF HIGHWAYS, REGION ENGINEER
February 2, 2007
Eric E. Haral
 INTERIM ENGINEER OF DESIGN AND ENVIRONMENT
February 2, 2007
Milton R. Sees
 DIRECTOR OF HIGHWAYS, CHIEF ENGINEER

**PRINTED BY THE AUTHORITY
 OF THE STATE OF ILLINOIS**

F.A.P. RTE.	SECTION	COUNTY	TOTAL SHEETS	SHEET NO.
697	(17, 18) I	FORD	9	2
STA. _____		TO STA. _____		
FED. ROAD DIST. NO. ILLINOIS			FED. AID PROJECT	

GENERAL NOTES

CAPE SEALING THROUGH INTERSECTIONS AND AT THE ENDS OF THE PROJECT SHALL HAVE THE EDGES TAPERED/FEATHERED OUT TWO TO THREE FEET BEYOND THE EDGE OF THE MAT. THE COST FOR TAPERS SHALL BE INCLUDED IN THE CONTRACT UNIT PRICE FOR CAPE SEAL, WITH PAY LIMITS WHERE CAPE SEALING ENDS.

THE AGGREGATE FOR THE A-1 SURFACE TREATMENT (THE FIRST PASS OF CAPE SEALING) SHALL BE CA 16 COURSE AGGREGATE CONFORMING TO ARTICLE 1004.01(c).

THE CONTRACTOR SHALL DEVISE AND SUBMIT A JOINT PLAN THAT MEETS THE APPROVAL OF THE ENGINEER.

THE ENGINEER WILL BE THE SOLE JUDGE CONCERNING CURING TIME FOR THE VARIOUS BITUMINOUS LIFTS.

ON EXISTING PAVEMENT WHICH MAY BE SUPERELEVATED, THE NEW BITUMINOUS PAVEMENT SHALL BE BUILT WITH THE SAME SUPERELEVATION UNLESS NEW SUPERELEVATION RATES ARE GIVEN ON THE PLANS.

ANY REFERENCE TO A STANDARD IN THESE PLANS SHALL BE INTERPRETED TO MEAN THE EDITION AS INDICATED BY THE SUBNUMBER SHOWN IN THE LIST OF STANDARDS INCLUDED IN THESE PLANS.

THE FOLLOWING RATES OF APPLICATION HAVE BEEN USED IN CALCULATING PLAN QUANTITIES:

MICROSURFACING, SINGLE PASS, TYPE II	24	LBS / SQ YD
SHORT TERM PAVEMENT MARKING	10	FT /100 FT OF APPLICATION

STATE OF ILLINOIS
DEPARTMENT OF TRANSPORTATION
DISTRICT THREE

PREPARED BY: *Pat Powell*
DISTRICT STUDIES & PLANS ENGINEER

DATE: 12-14-06

EXAMINED BY: *Herb Jung* FOR HERB JUNG
DISTRICT CONSTRUCTION ENGINEER

Mark ...
DISTRICT MATERIALS ENGINEER

Bruce A. ...
DISTRICT OPERATIONS ENGINEER

F.A.P. RTE.	SECTION	COUNTY	TOTAL SHEETS	SHEET NO.
897	(17, 18) I	FORD	9	3
STA. _____		TO STA. _____		
FED. ROAD DIST. NO. ILLINOIS		FED. AID PROJECT		

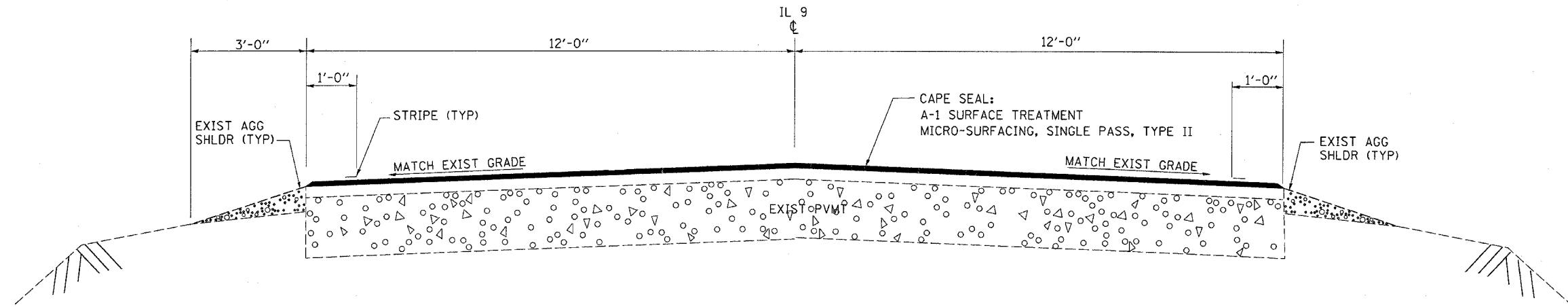
SUMMARY OF QUANTITIES

CODE NO.	CONSTRUCTION CODE TYPE: ITEM	UNIT	TOTAL QUANTITY	I000	SFTY-2A
				ROADWAY QUANTITY	027-2000 CULVERT QUANTITY
45100200	CRACK FILLING	POUND	1258	1258	
66700205	PERMANENT SURVEY MARKERS, TYPE I	EACH	3	3	
67100100	MOBILIZATION	L SUM	1	1	
70100460	TRAFFIC CONTROL AND PROTECTION, STANDARD 701306	L SUM	1	1	
70300100	SHORT-TERM PAVEMENT MARKING	FOOT	2623	2623	
70301000	WORK ZONE PAVEMENT MARKING REMOVAL	SQ FT	874	874	
* 78001110	PAINT PAVEMENT MARKING - LINE 4"	FOOT	58802	58802	
* 78001130	PAINT PAVEMENT MARKING - LINE 6"	FOOT	6558	6558	
* 78100100	RAISED REFLECTIVE PAVEMENT MARKER	EACH	327	327	
78100215	TEMPORARY FLEXIBLE PAVEMENT MARKER	EACH	1312	1312	
78300200	RAISED REFLECTIVE PAVEMENT MARKER REMOVAL	EACH	327	327	
X0324951	CAPE SEAL	SQ YD	69949	69896	53

* SPECIALTY ITEM

F.A.P. RTE	SECTION	COUNTY	TOTAL SHEETS	SHEET NO.
697	(17, 18) I	FORD	9	4

STA.	TO STA.	FED. ROAD DIST. NO.	ILLINOIS	FED. AID PROJECT



TYPICAL SECTION

195+85 TO 225+82
 229+68 TO 413+91
 414+79 TO 462+90

OMISSIONS	
SN 027-0068	STA. 225+82 TO 229+68
SN 027-0078	STA. 413+91 TO 414+79

F.A.P. RTE.	SECTION	COUNTY	TOTAL SHEETS	SHEET NO.
697	(17, 18) I	FORD	9	5

STA.	TO STA.	FED. ROAD DIST. NO.	ILLINOIS	FED. AID PROJECT

RESURFACING SCHEDULE

LOCATION	DESCRIPTION	LENGTH	CAPE SEAL	CRACK FILLING
			SQ YD	POUND
195+85 TO 225+82		2997	7992	144
225+82 TO 229+68	SN 027-0068	OMISSION		
229+68 TO 350+30		12062	32165.3	579
350+30 TO 350+50	SN 027-2000	20	53.3	
350+50 TO 413+91		6341	16909.3	304
413+91 TO 414+79	SN 027-0078	OMISSION		
414+79 TO 462+90		4811	12829.3	231
TOTAL			69949.2	1258

PAVEMENT MARKING SCHEDULE

LOCATION	DESCRIPTION	LENGTH	PAINT PVMT MARK		PAINT PVMT MARK YELLOW 6"	TEMP FLEX PVMT MARKERS EACH	SHORT TERM PVMT MARKING FOOT	WORK ZONE PVMT MARK REMOVAL SQ FT	RAISED REF PVMT MARKER REMOVAL EACH	RAISED REF PVMT MARKER EACH
			WHITE 4" FOOT	YELLOW 4" FOOT						
			195+85 TO 225+82		2997	5994	1520	749	150	300
225+82 TO 229+68	SN 027-0068	OMISSION								
229+68 TO 413+91		18423	36846	3900	4606	921	1842	614	230	230
413+91 TO 414+79	SN 027-0078	OMISSION								
414+79 TO 462+90		4811	9622	920	1203	241	481	160	60	60
SUBTOTAL			52462	6340						
TOTAL			58802		6558	1312	2623	874	327	327

NOTE: NO PASSING ZONES SHALL BE REPLACED

F.A.P. RTE.	SECTION	COUNTY	TOTAL SHEETS	SHEET NO.
697	(17, 18) I	FORD	9	6
STA. _____		TO STA. _____		
FED. ROAD DIST. NO.	ILLINOIS	FED. AID PROJECT		

"TIE POINT"

TO

LAND SURVEY MONUMENTS SITUATED IN SECTION(S) 11 & 14, TOWNSHIP 23N
 RANGE 8E, OF THE 3RD, PRINCIPAL MERIDIAN, FORD
 COUNTY, ILLINOIS.

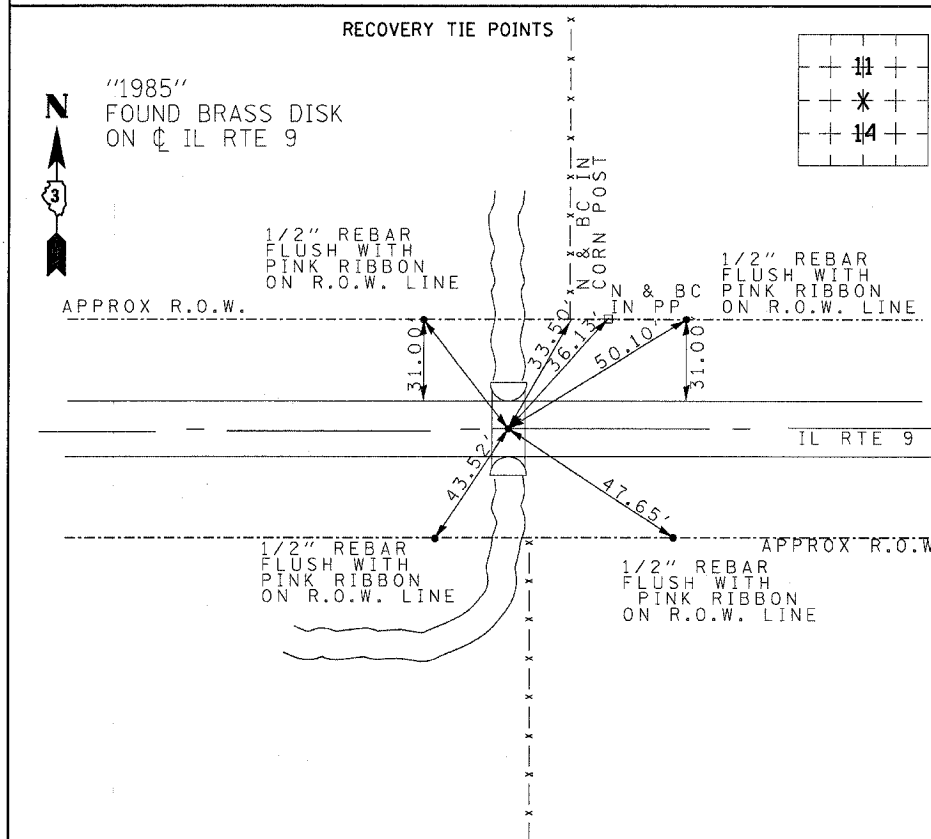
MONUMENT DESCRIPTION AND REMARKS: SET BRONZE PLAQUE - 1/4 SECTION
OF SECTION 11 AND 14. OVER 3/4" IRON PIN ILS 1718

"TIE POINT"

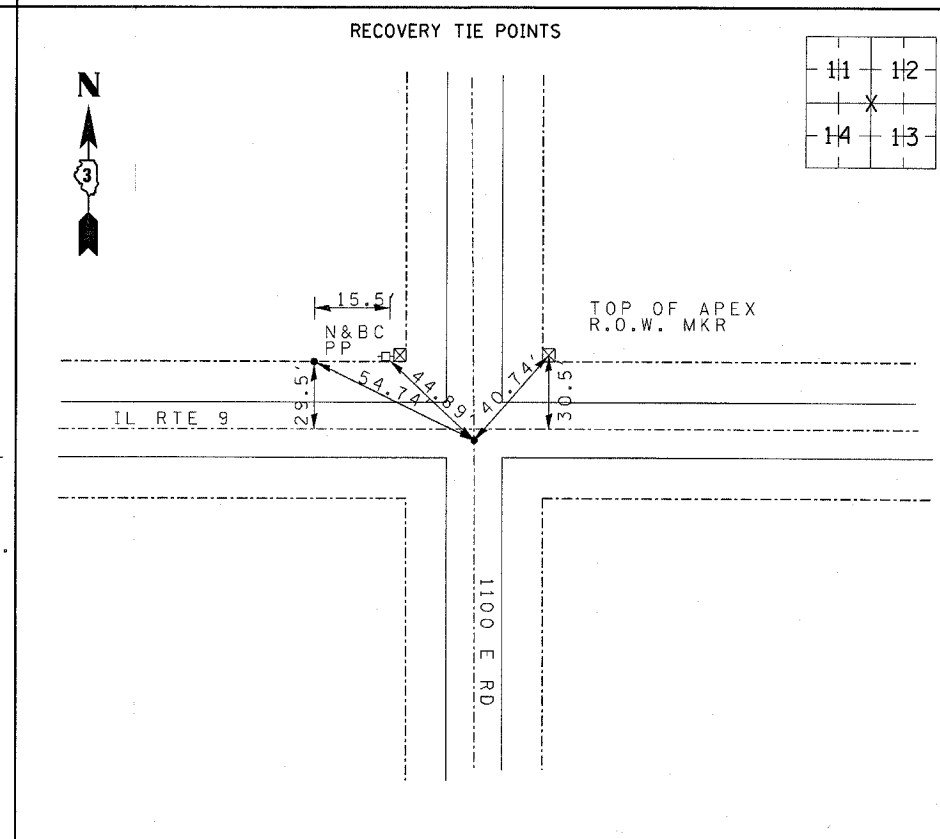
TO

LAND SURVEY MONUMENTS SITUATED IN SECTION(S) 11,12,13,&14, TOWNSHIP 23N
 RANGE 8E, OF THE 3RD, PRINCIPAL MERIDIAN, FORD
 COUNTY, ILLINOIS.

MONUMENT DESCRIPTION AND REMARKS: EXISTING MONUMENT - 1/2" IRON PIPE
REPLACED WITH BRONZE PLAQUE-SECTION CORNER OF
SECTIONS 11,12,13,&14



PERMANENT SURVEY MARKER, TY I



PERMANENT SURVEY MARKER, TY I

F.A.P. RTE.	SECTION	COUNTY	TOTAL SHEETS	SHEET NO.
697	(17, 18) I	FORD	9	7

STA.	TO STA.	FED. ROAD DIST. NO.	ILLINOIS	FED. AID PROJECT

"TIE POINT"

TO

LAND SURVEY MONUMENTS SITUATED IN SECTION(S) 7,8,17,&18 , TOWNSHIP _____
 RANGE _____ , OF THE 3RD , PRINCIPAL MERIDIAN, _____
 COUNTY, ILLINOIS.

MONUMENT DESCRIPTION AND REMARKS: SET BRONZE PLAQUE - SECTION CORNER
 SECTIONS 7,8,17,&18 IL RTE 9 STA 299+52.2 - 5.15'RT

"TIE POINT"

TO

LAND SURVEY MONUMENTS SITUATED IN SECTION(S) 17 , TOWNSHIP T23N
 RANGE 9E , OF THE _____ , PRINCIPAL MERIDIAN, FORD
 COUNTY, ILLINOIS.

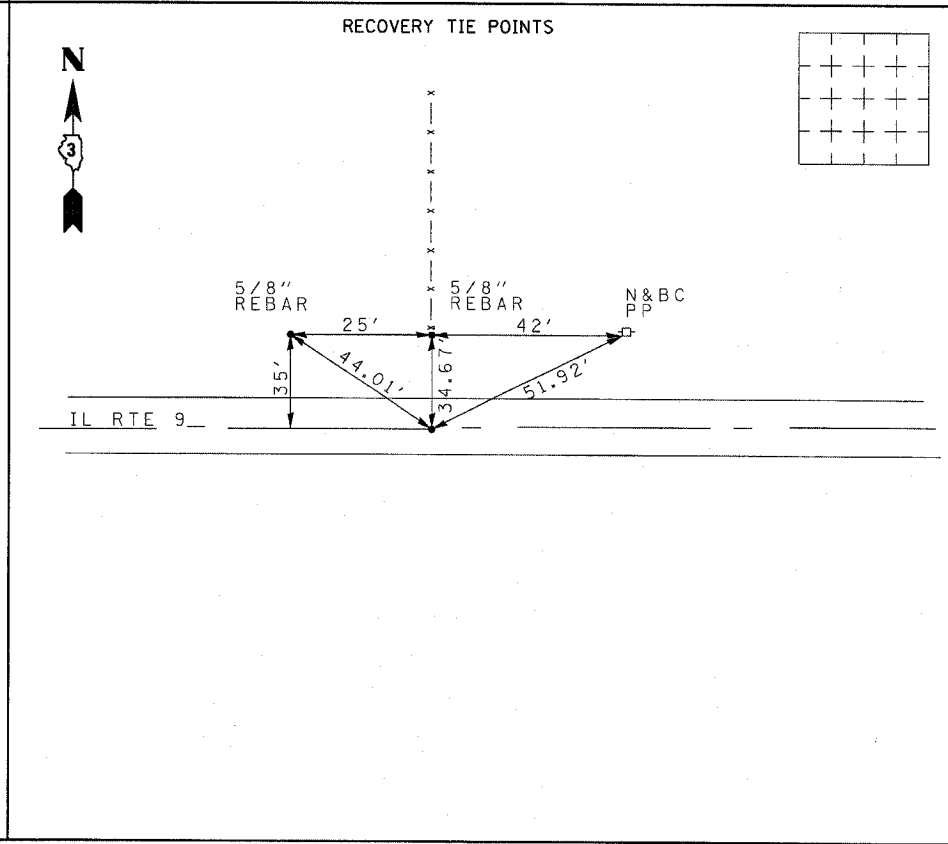
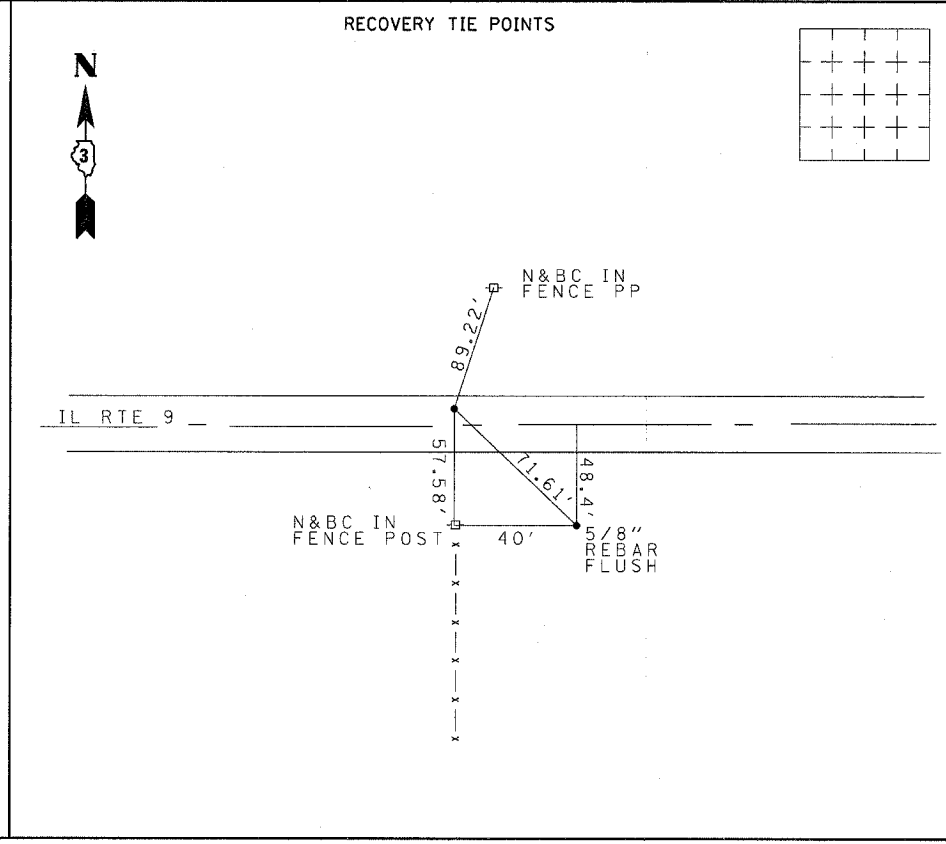
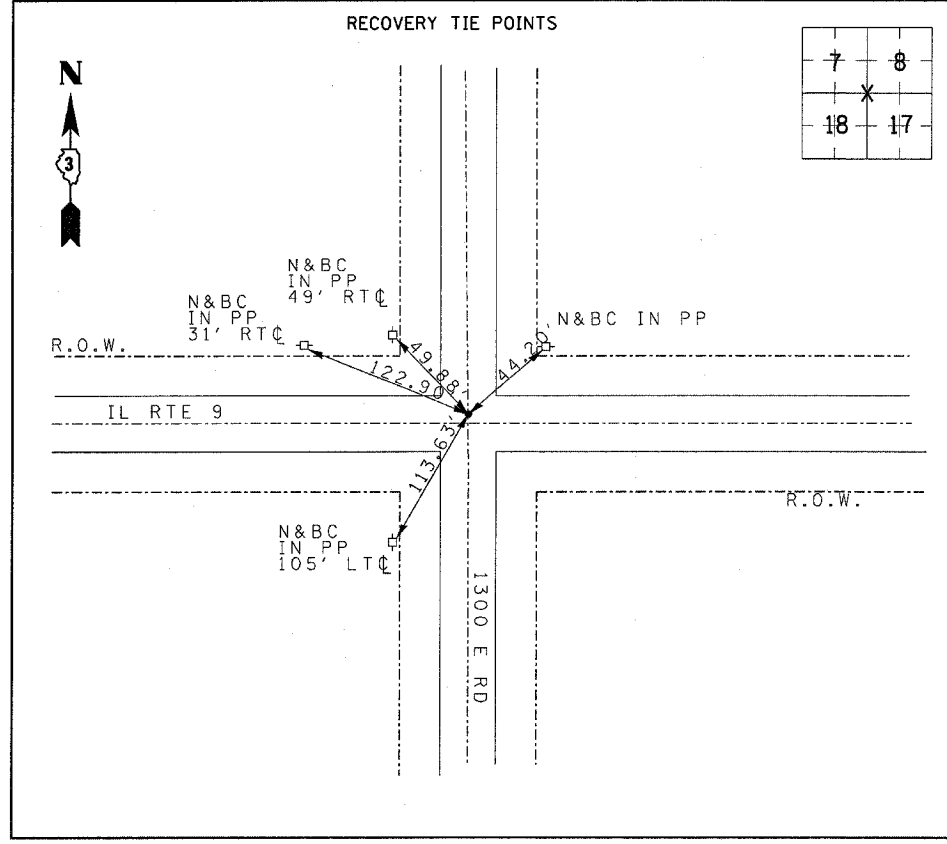
MONUMENT DESCRIPTION AND REMARKS: FOUND PK NAIL & WASHER
 9.35' NO. Ⓞ IL RTE 9 COULD
 REPRESENT N 1/4 SEC 17 T23N R9E

"TIE POINT"

TO

LAND SURVEY MONUMENTS SITUATED IN SECTION(S) 13 , TOWNSHIP T23
 RANGE 8E , OF THE _____ , PRINCIPAL MERIDIAN, FORD
 COUNTY, ILLINOIS.

MONUMENT DESCRIPTION AND REMARKS: FOUND PK NAIL 0.3' SO. Ⓞ IL 9
 COULD REPRESENT N 1/4 SEC 13 T23N R8E



PERMANENT SURVEY
 MARKER, TY I

F.A.P. RTE.	SECTION	COUNTY	TOTAL SHEETS	SHEET NO.
697	(17, 18) I	FORD	9	8

STA.	TO STA.
FED. ROAD DIST. NO. ILLINOIS	FED. AID PROJECT



ELLIOTT

SN 027-0078 STA 414+35
OMISSION 413+91 TO 414+79

MAIN STREET

1000 E
463+31

1100 E
409+92

1200 E
356+94

SN 027-2000
350+40

IL 9

1300 E
299+66

1400 E
249+48

SN 027-0068, STA 227+00
OMISSION 229+68 TO 225+82

1480 E
206+01

IL 115
195+45

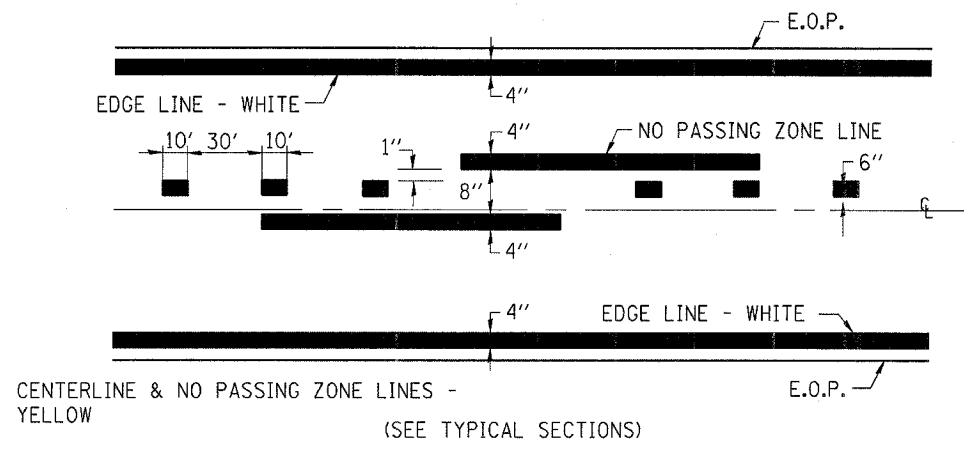
END IMPROVEMENT
462 + 90

BEGIN IMPROVEMENT
195 + 85

F.A.P. RTE.	SECTION	COUNTY	TOTAL SHEETS	SHEET NO.
697	(17, 18) I	FORD	9	9

STA.	TO STA.

FED. ROAD DIST. NO.	ILLINOIS	FED. AID PROJECT



PAVEMENT MARKING

12/13/2006 7:14:07 AM
c:\projects\ed05206\details.dgn