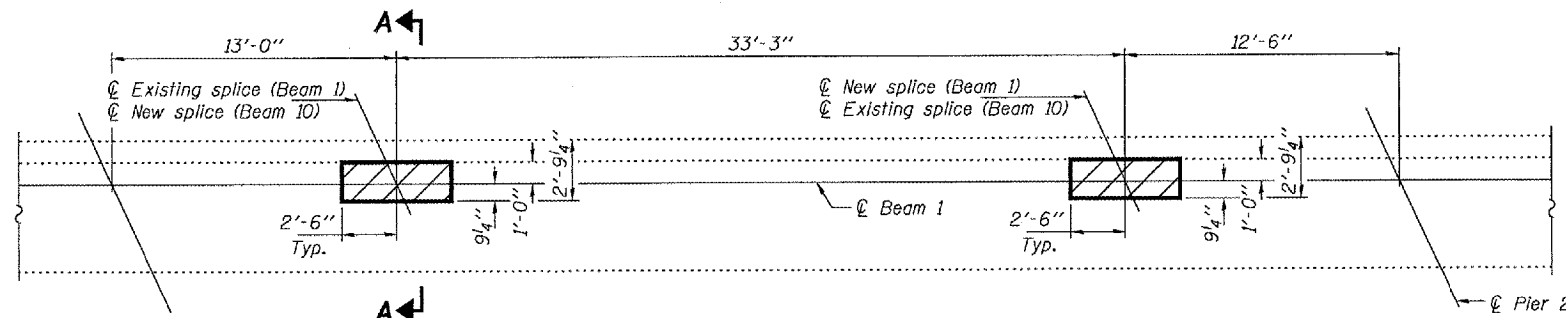


STATE OF ILLINOIS
DEPARTMENT OF TRANSPORTATION

ROUTE NO.	SECTION	COUNTY	SHEET NO.	SHEET
FA 29		KNOX	11	10
FED. ROAD DIST. NO. 7	ILLINOIS	FED. AID PROJECT-		

SHEET NO. 3
4 SHEETS

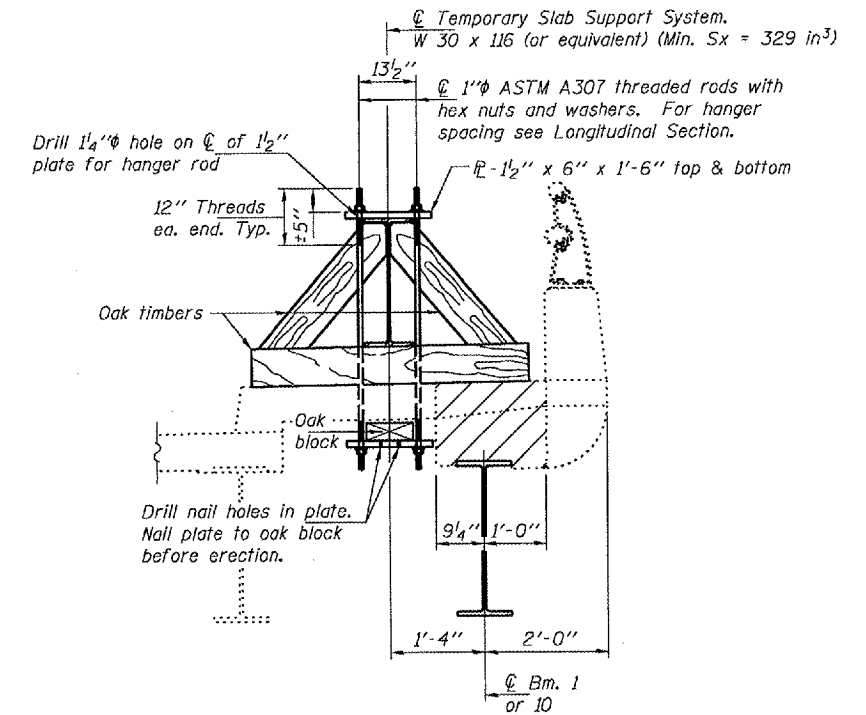
Contract Number:



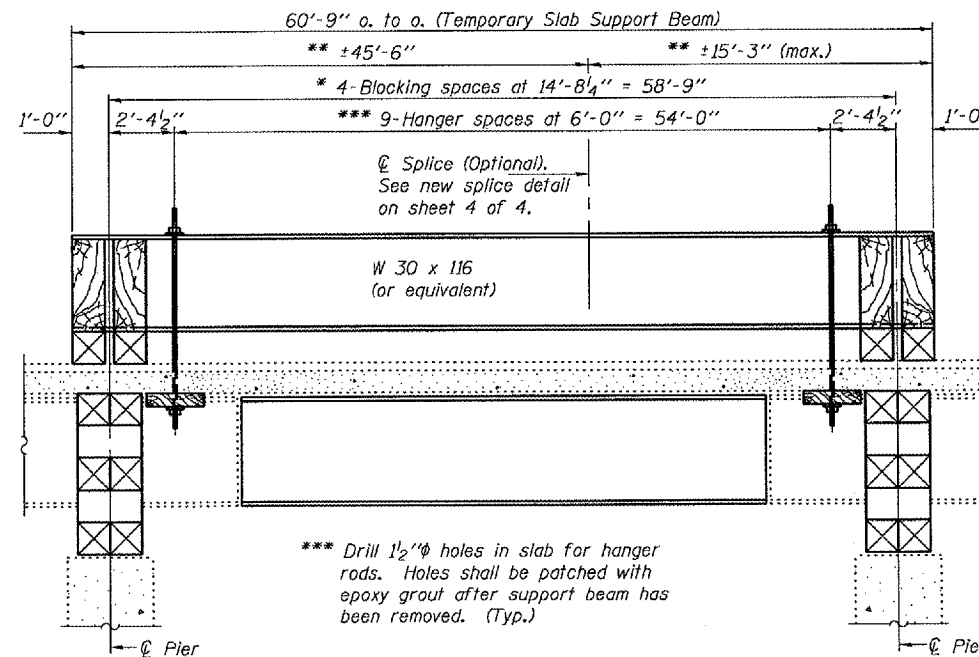
TYPICAL CONCRETE REMOVAL AND REPLACEMENT

Beam 1 shown. Beam 10 similar by rotation, except as shown.

Hatched areas indicate concrete sections to be removed and replaced. Perimeters of concrete removal areas shall be saw cut $\frac{3}{4}$ " prior to the removal of concrete. Reinforcement shall be cut only if required for fitting bolts. Cut reinforcement shall be spliced as directed by the Engineer. Cost shall be included with Concrete Removal.



SECTION A-A



**LONGITUDINAL SECTION
SUGGESTED TEMPORARY SLAB SUPPORT SYSTEM**

** These dimensions may vary for available beams in stock.

* Wood blocking between piers to be placed after support beam deflects under its own weight.

DESIGNED	ATH
CHECKED	AJB
DRAWN	baliva
CHECKED	ATH AJB

JANUARY 9, 2007
EXAMINED *A. Carl Hoyer*
REPAIR PLANS UNIT CHIEF
PASSED *Ralph E. Anderson*
ENGINEER OF BRIDGES AND STRUCTURES

BRIDGE REPAIRS
FA RT. 29
KNOX COUNTY
SN 048-0068