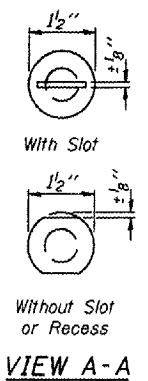
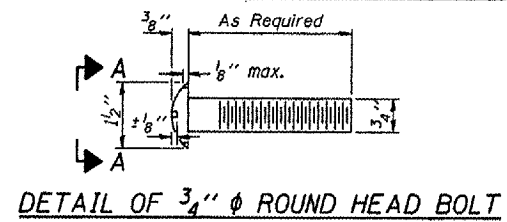


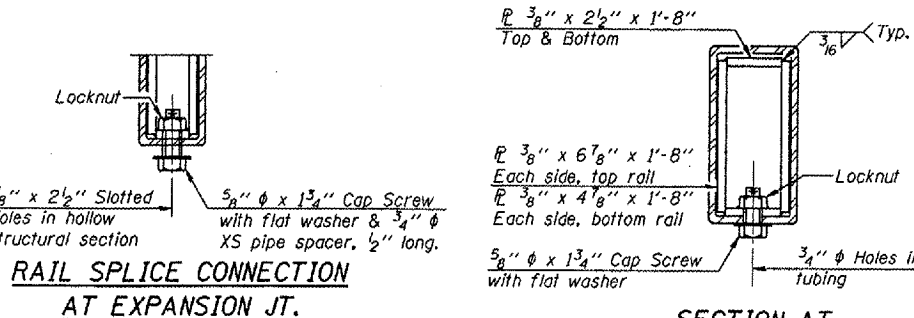
ROUTE NO.	SECTION	COUNTY	TOTAL SHEETS	SHEET NO.
F.A.P. 702	(113B)1	WOODFORD	38	18
FED. ROAD DIST. NO.	ILLINOIS	FED. AID PROJECT		

Contract No. 68635

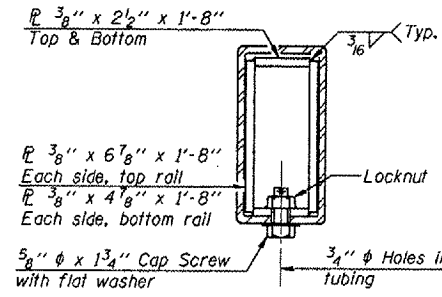
SHEET NO. 9
OF 14 SHEETS



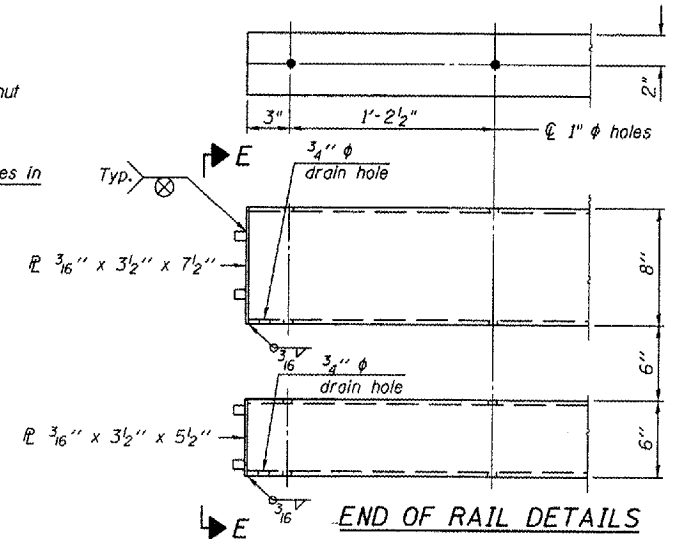
4- 3/4" ϕ x 6" Round Head Bolts
(With slot or approved recess in head) with locknut & flat washer.
7/8" ϕ holes in hollow structural section may be drilled in the field.



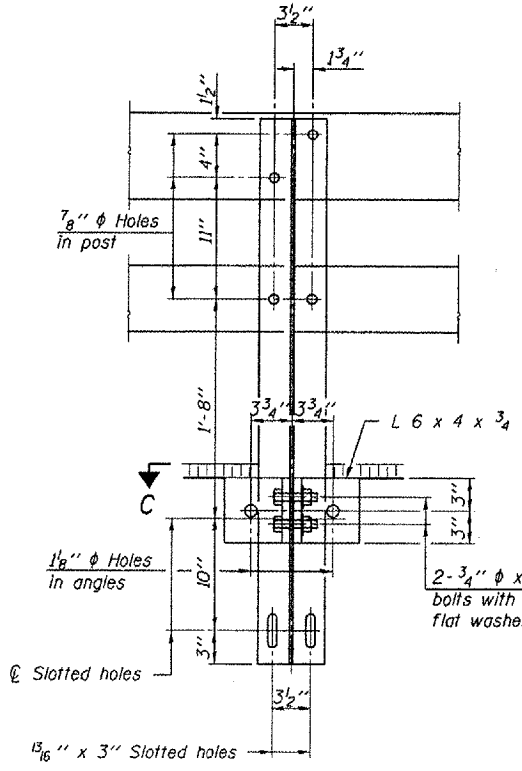
RAIL SPLICE CONNECTION AT EXPANSION JT.



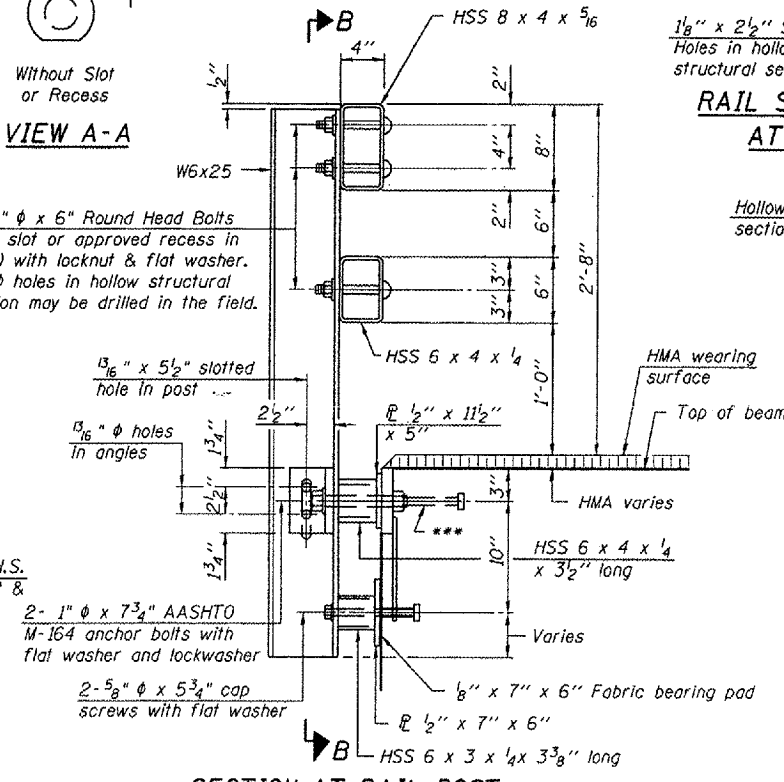
SECTION AT RAIL SPLICE



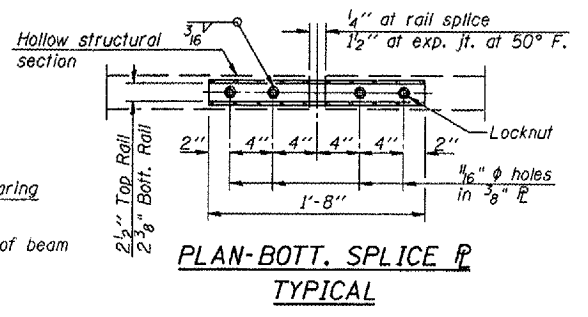
END OF RAIL DETAILS



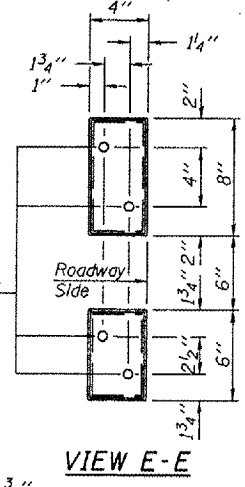
SECTION B-B



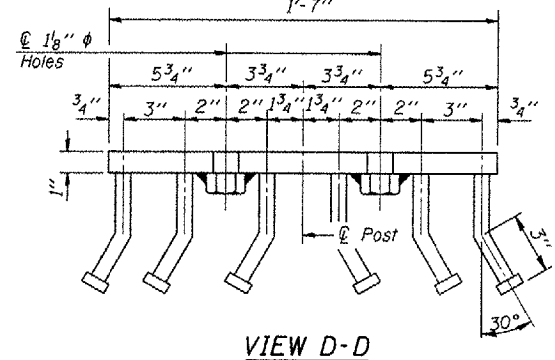
SECTION AT RAIL POST



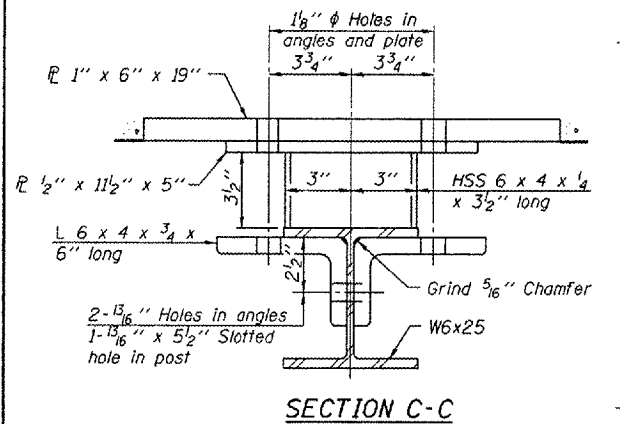
PLAN-BOTT. SPLICE P TYPICAL



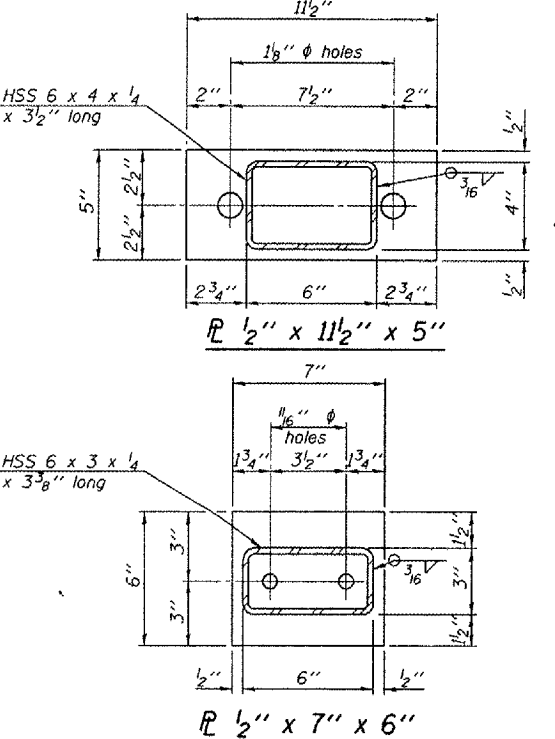
VIEW E-E



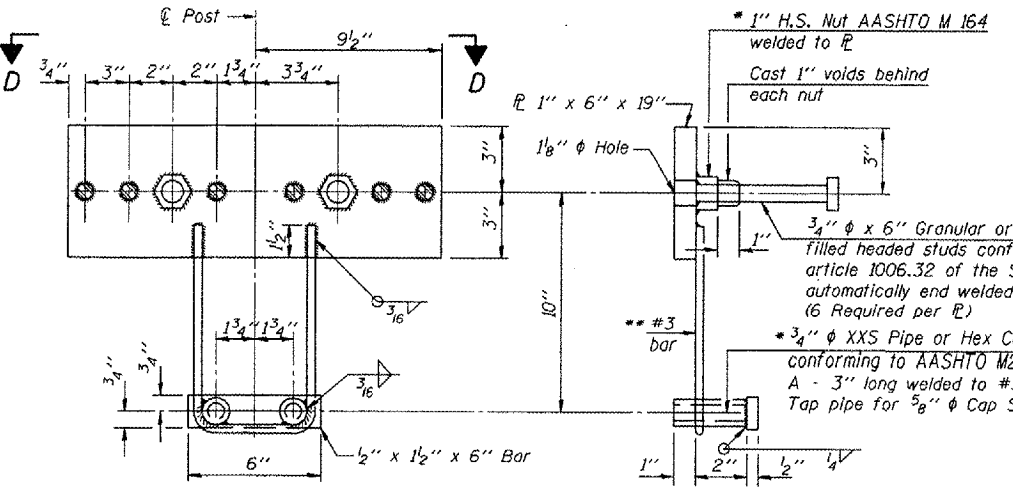
VIEW D-D



SECTION C-C



ANCHOR DEVICE



Notes:
All field drilled holes shall be coated with an approved zinc paint before erection.
For multi-span bridges, sufficient 1/4" x 6" x 1'-2" galvanized steel shims shall be provided to align rail between adjacent spans. Cost included with Steel Bridge Rail, Type SM.
All steel rail members shall be galvanized according to Article 509.05 of the Standard Specifications.
The studs of the anchor devices shall be placed below the top reinforcement bars and the outermost longitudinal reinforcement bar shall be placed directly above the studs of the rail post anchor device.

* Threaded areas shall be plugged or blocked off during casting of beam. Galvanized after fabrication.

* 1" H.S. Nut AASHTO M 164 welded to R
Cast 1" voids behind each nut
3/4" ϕ x 6" Granular or solid flux filled headed studs conforming to article 1006.32 of the Std. Specs. automatically end welded. (6 Required per R)
* 3/4" ϕ XXS Pipe or Hex Coupler Nuts conforming to AASHTO M291, Grade A - 3" long welded to #3 bar and Tap pipe for 5/8" ϕ Cap Screw.

** Whenever the lower insert assemblies interfere with strand locations, the #3 bars shall be cut and adjusted in order to allow raising or lowering of the lower inserts. Maximum adjustment not to exceed 1/2".

APPROACH RAILING DETAILS
IL ROUTE 117 OVER
WALNUT CREEK
F.A.P. RTE. 702 - SECTION (113B)1
WOODFORD COUNTY
STA. 15+45.00
S.N. 102-0018

R-34HMAWS 11-1-06 (6'-3" Maximum Post Spacing) (1/4" minimum to 3/8" maximum HMA thickness)