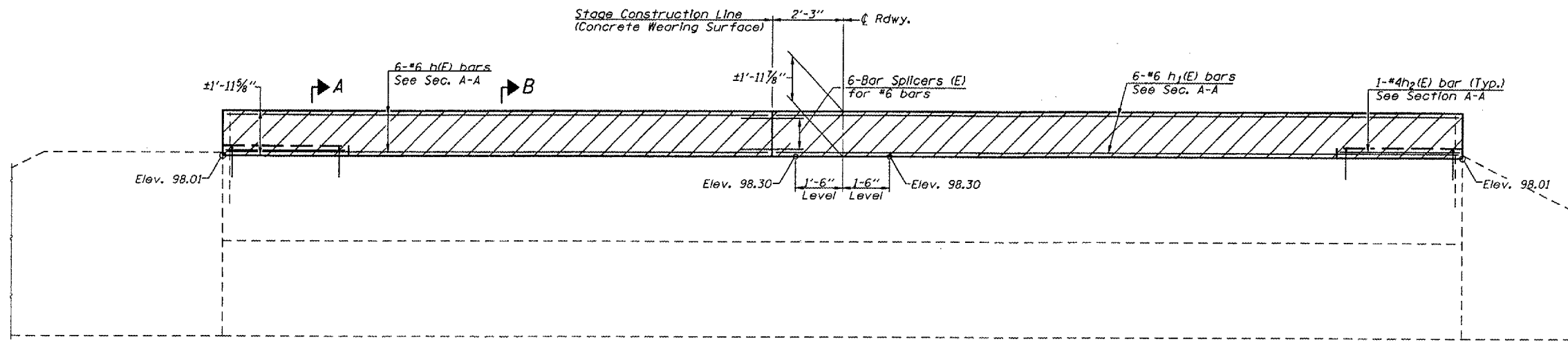


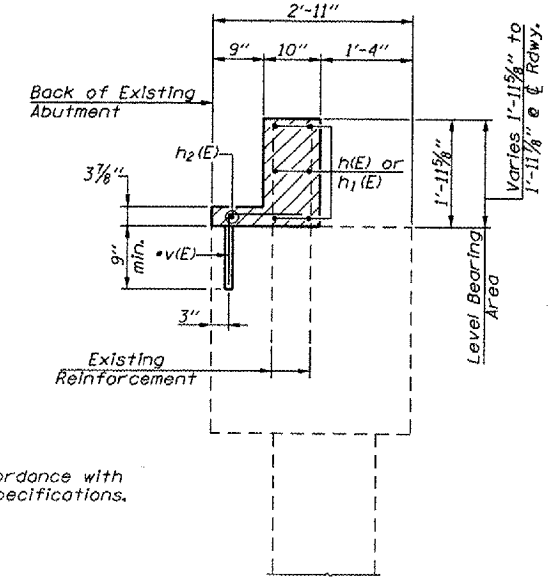
| | | | | |
|---------------------|----------|------------------|--------------|-----------|
| ROUTE NO. | SECTION | COUNTY | TOTAL SHEETS | SHEET NO. |
| F.A.P. 702 | (113B)1 | WOODFORD | 38 | 21 |
| FED. ROAD DIST. NO. | ILLINOIS | FED. AID PROJECT | | |

SHEET NO. 12 OF 14 SHEETS

Contract No. 68635

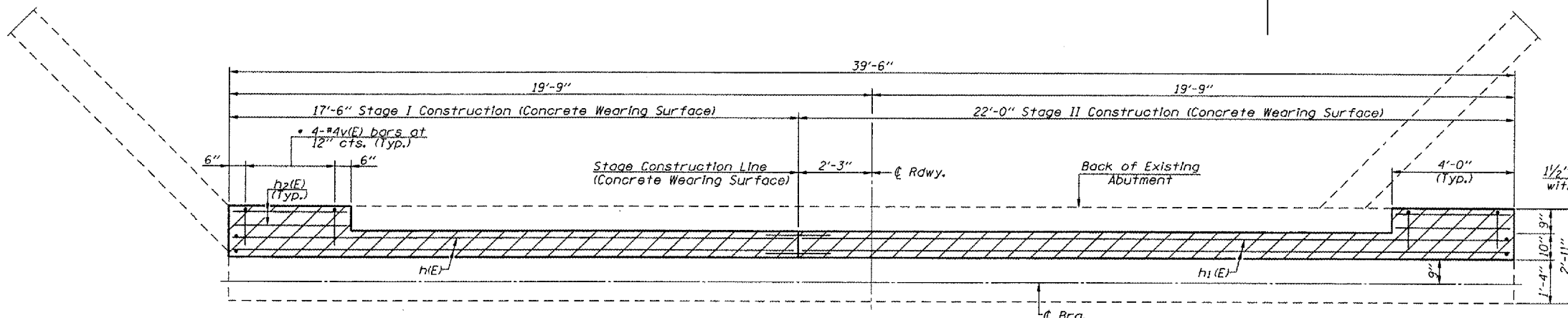


ELEVATION
(Looking North)

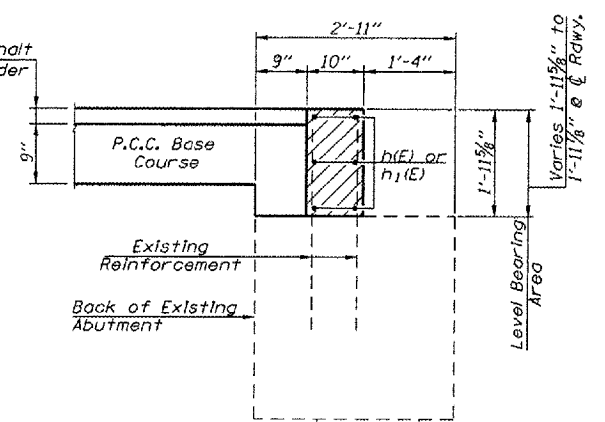


SECTION A-A

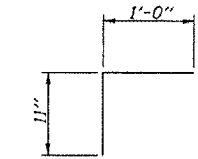
• Drill and grout v(E) bars in accordance with Article 584 of the Standard Specifications.



PLAN



SECTION B-B



BAR v(E)

BILL OF MATERIAL

| Bar | No. | Size | Length | Shape |
|----------------------------------|-----|------|---------|-------|
| h1(E) | 6 | #6 | 17'-2" | — |
| h2(E) | 2 | #4 | 3'-8" | — |
| v(E) | 8 | #4 | 1'-11" | — |
| Reinforcement Bars, Epoxy Coated | | | Pound | 370 |
| Bar Splicers | | | Each | 6 |
| Concrete Substructure | | | Cu. Yd. | 2.5 |

Reinforcement bars designated (E) shall be Epoxy Coated.

Notes: Hatched area to be poured after Concrete Wearing Surface is in place. Space reinforcement bars to miss dowel rods.

NORTH ABUTMENT
IL ROUTE 117 OVER
WALNUT CREEK
F.A.P. RTE. 702 - SECTION (113B)1
WOODFORD COUNTY
STA. 15+45.00
S.N. 102-0018

FILE NAME: STRUCTURE PLANSREV. 12/8/05