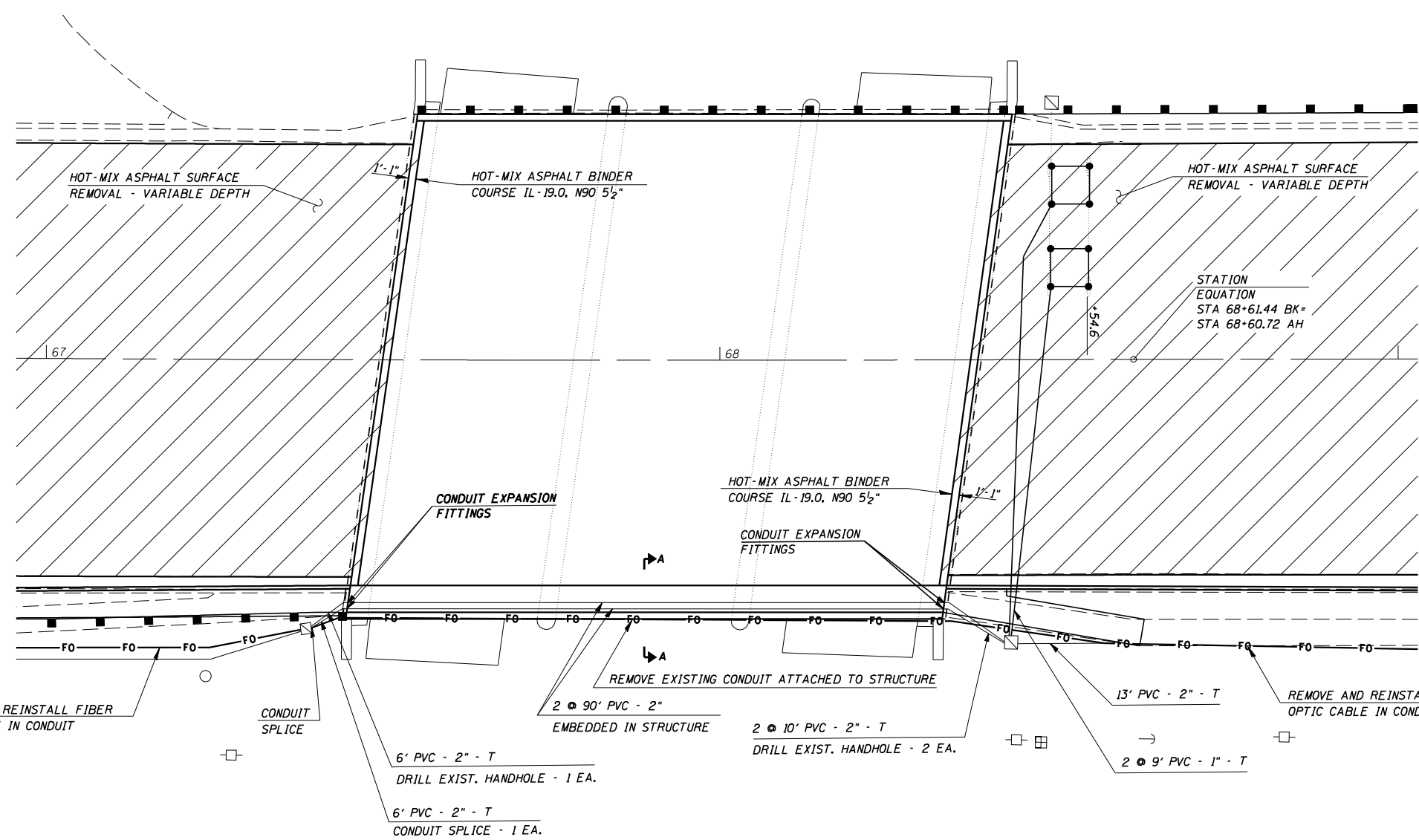
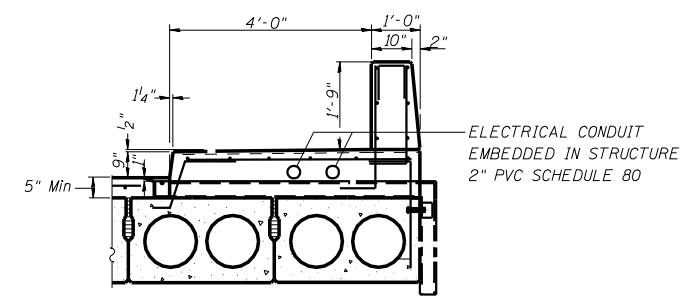


F.A.P. RTE.	SECTION	COUNTY	TOTAL SHEETS	SHEET NO.
693	129 B-2	MCLEAN	34	17
STA.		TO STA.		
FED. ROAD DIST. NO.	ILLINOIS	FED. AID PROJECT		
<b>CONTRACT NO. 70519</b>				

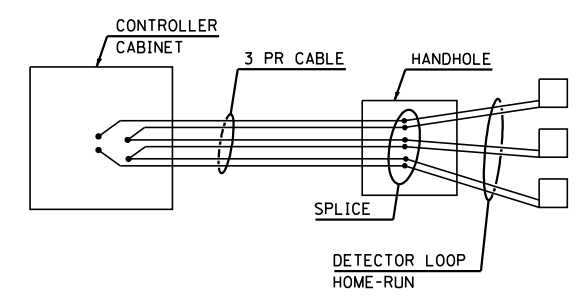


**PLAN**



**SECTION A-A**

**DETAIL OF DETECTOR LOOP WIRING**  
WIRED IN SERIES WITH MULTI-PAIR CABLE



**NOTES:**  
 CONDUIT EMBEDDED IN STRUCTURE: CONDUIT SHALL BE EMBEDDED IN THE BRIDGE SIDEWALK AS SHOWN ON THE PLANS AND AS SPECIFIED IN SECTION 812 OF THE STANDARD SPECIFICATIONS. THE CONDUIT SHALL BE CONNECTED TO EXISTING UNDERGROUND CONDUITS VIA EXPANSION FITTINGS ON EACH END OF THE STRUCTURE IN A MANNER APPROVED BY THE ENGINEER.  
 DETECTOR LOOPS SHALL BE INSTALLED PRIOR TO FINAL SURFACE.

**CONDUIT DETAILS**  
**FAP ROUTE 693 (IL 9)**  
**SECTION 129 B-2**  
**MCLEAN COUNTY**

JOB #: 2114.5  
 FILE: 2114elec  
 DATE: 12/18/06

CUMMINS ENGINEERING CORPORATION