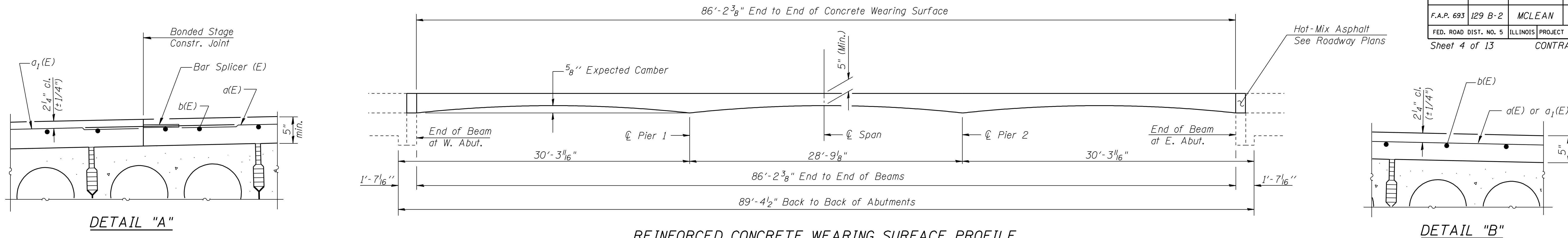
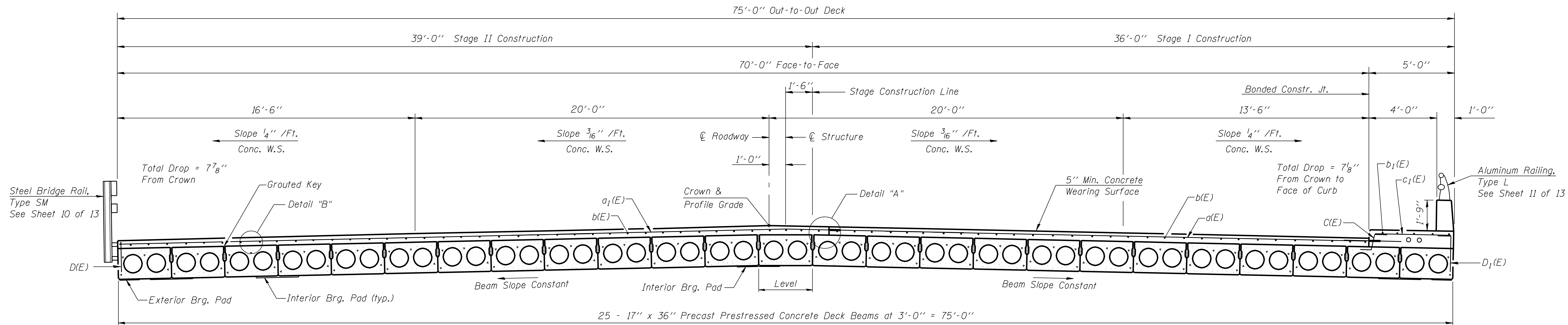


ROUTE NO.	SECTION	COUNTY	TOTAL SHEETS	SHEET NO.
F.A.P. 693	129 B-2	MCLEAN	34	25
FED. ROAD DIST. NO. 5		ILLINOIS PROJECT		
Sheet 4 of 13		CONTRACT #70519		

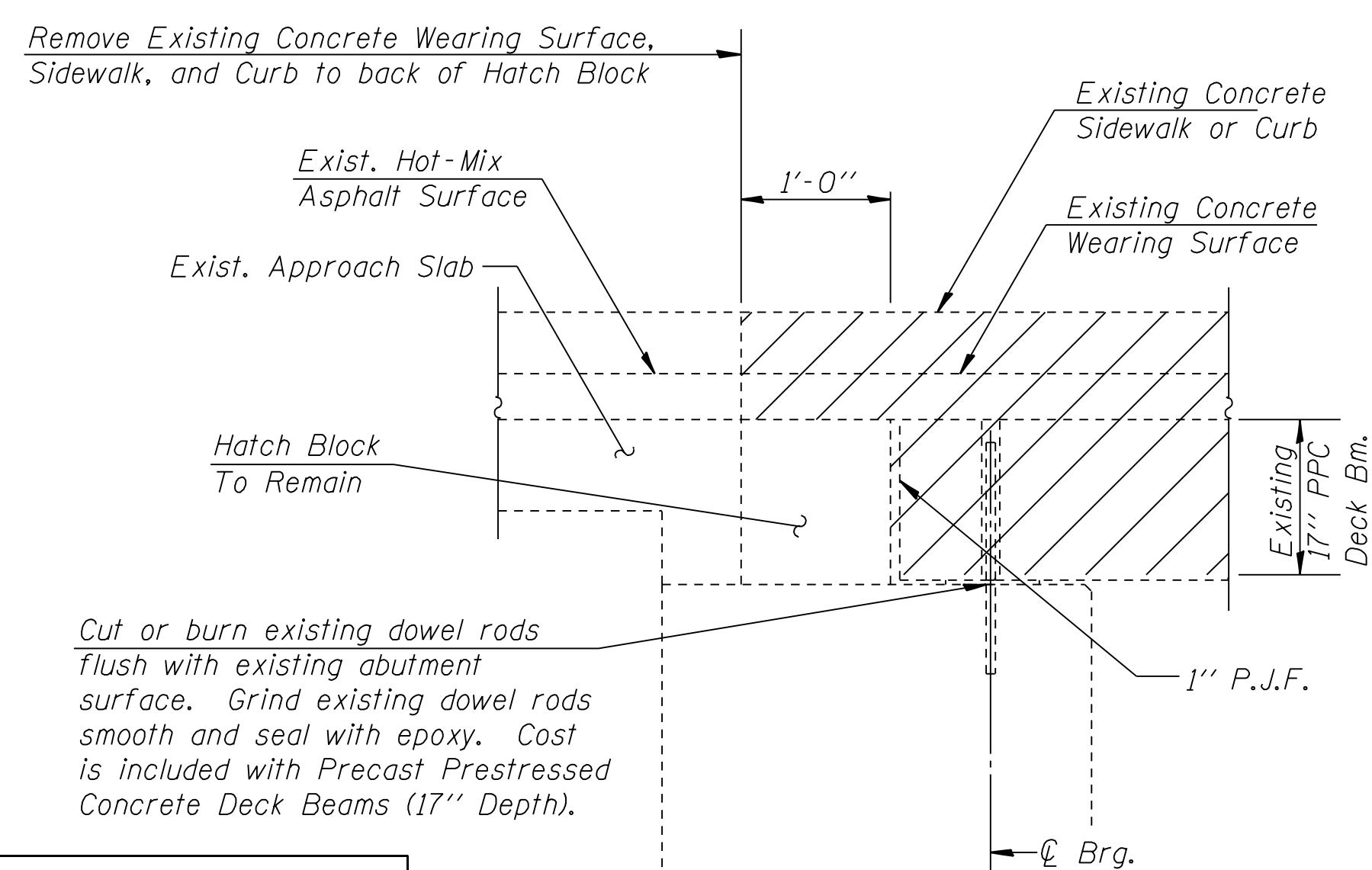


REINFORCED CONCRETE WEARING SURFACE PROFILE



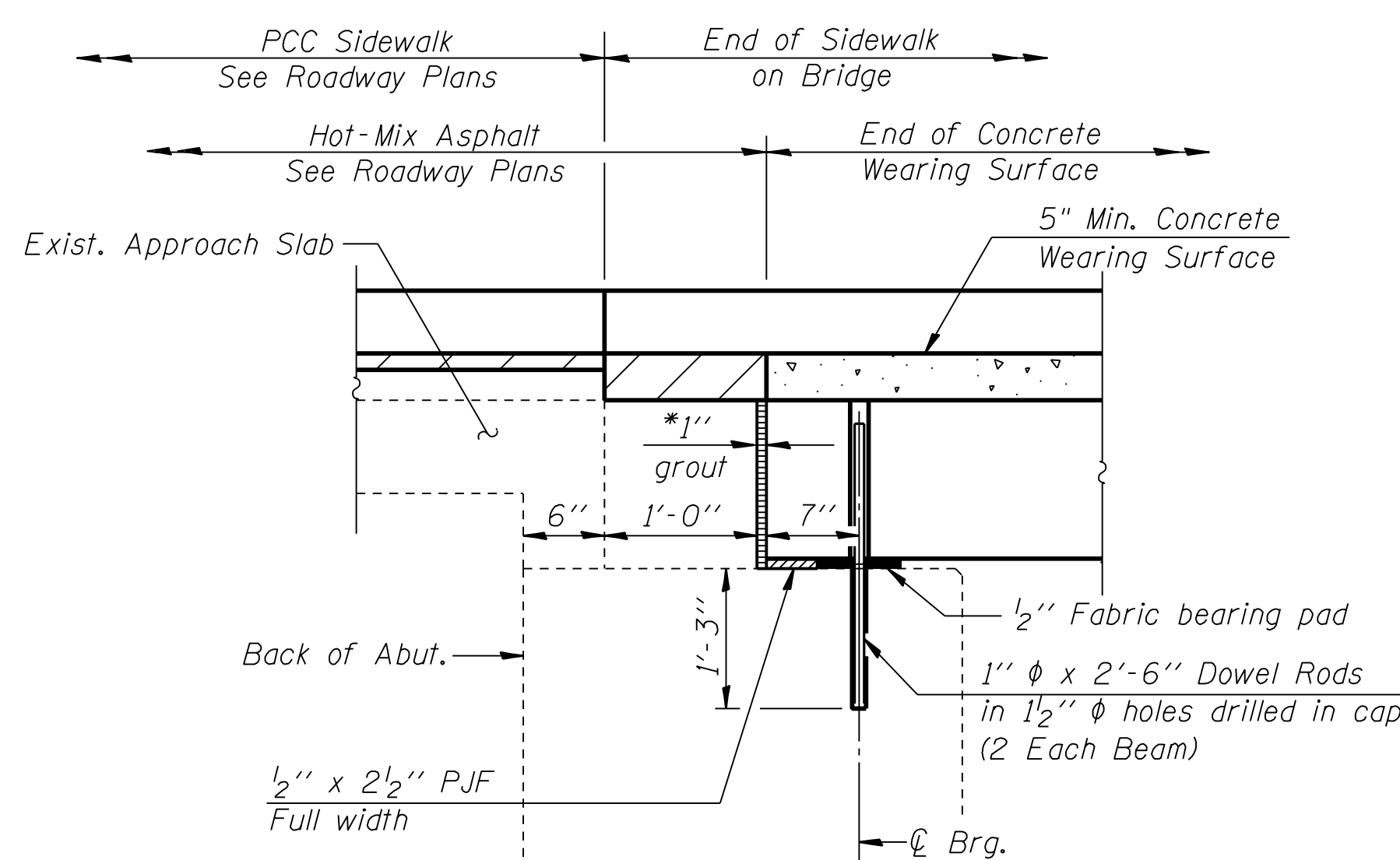
CROSS SECTION

(Looking East - Dimensions at Rt. L's)



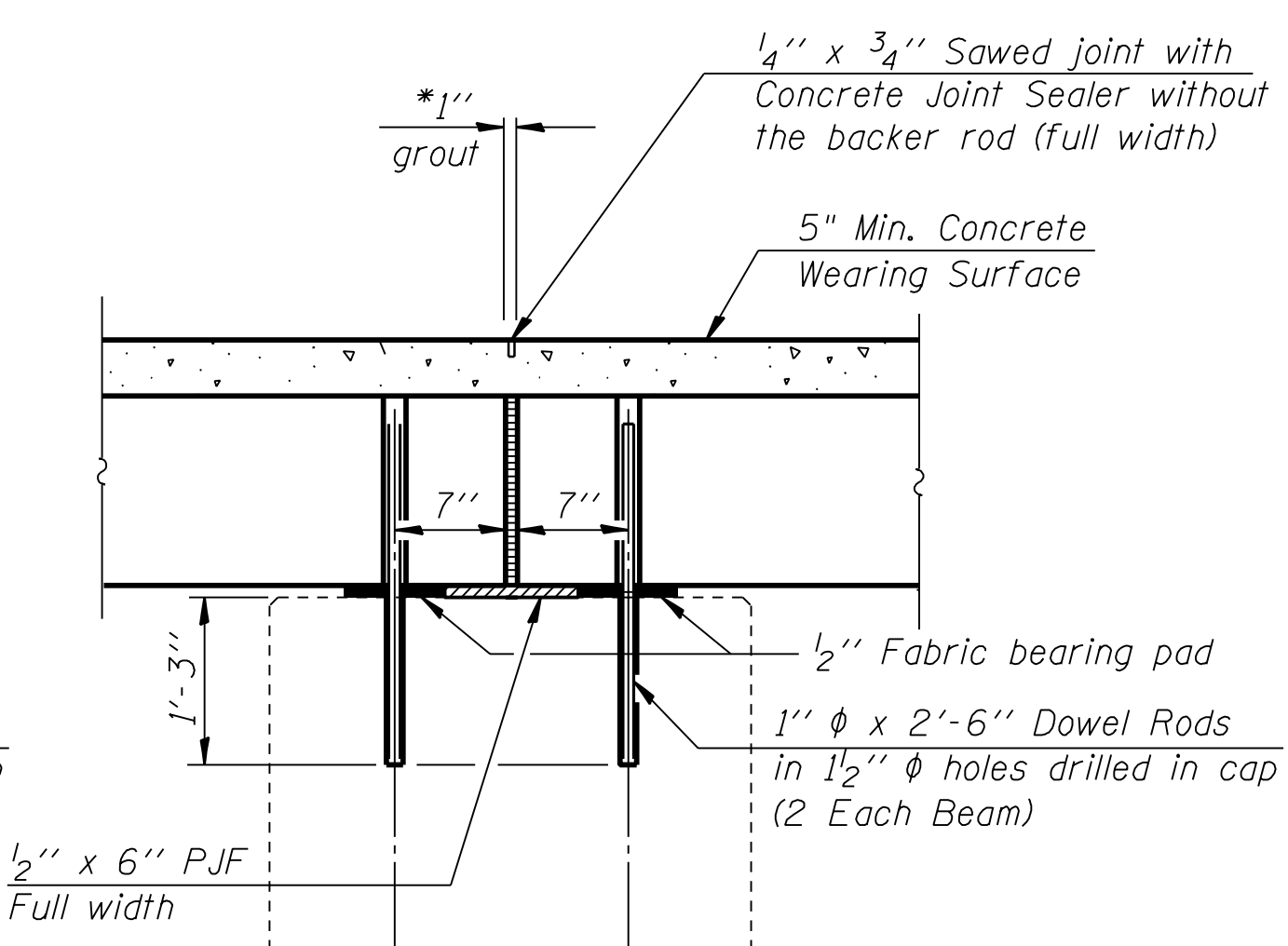
EXISTING SECTION THRU ABUTMENT

Dimensions at Rt. L's



PROPOSED SECTION THRU ABUTMENT

Dimensions at Rt. L's



SECTION THRU PIER

Dimensions at Rt. L's

Notes:
 After beams have been erected, holes for dowel rods shall be drilled into the Abuts. & Piers and dowel rods placed. Dowel holes shall be filled with non-shrink grout to the top of beam and allowed to cure a minimum of 24 hrs. prior to grouting the shear keys.
 Dowel rods drilled in cap are included in the cost of Precast Prestressed Concrete Deck Beams (17" Depth).
 Concrete wearing surface to be poured after grouting the shear keys.
 See sheet 9 of 13 for bearing pad details.
 See sheet 5 of 13 for Bill of Material.
 Hatched areas indicate Removal of Existing Superstructures.

DESIGNED	T.S.H.
CHECKED	M.D.C.
DRAWN	A.A.N.
CHECKED	M.D.C.

* Dimension may vary to accommodate tolerance in beam lengths.

SUPERSTRUCTURE

ILLINOIS ROUTE 9 OVER SUGAR CREEK
 F.A.P. ROUTE 693 - SEC. 129 B-2
 MCLEAN COUNTY
 STATION 67+94
 STRUCTURE NO. 057-0190

CUMMINS ENGINEERING CORPORATION	JOB #: 2114.5
	FILE: 21145super
	DATE: 12/18/06