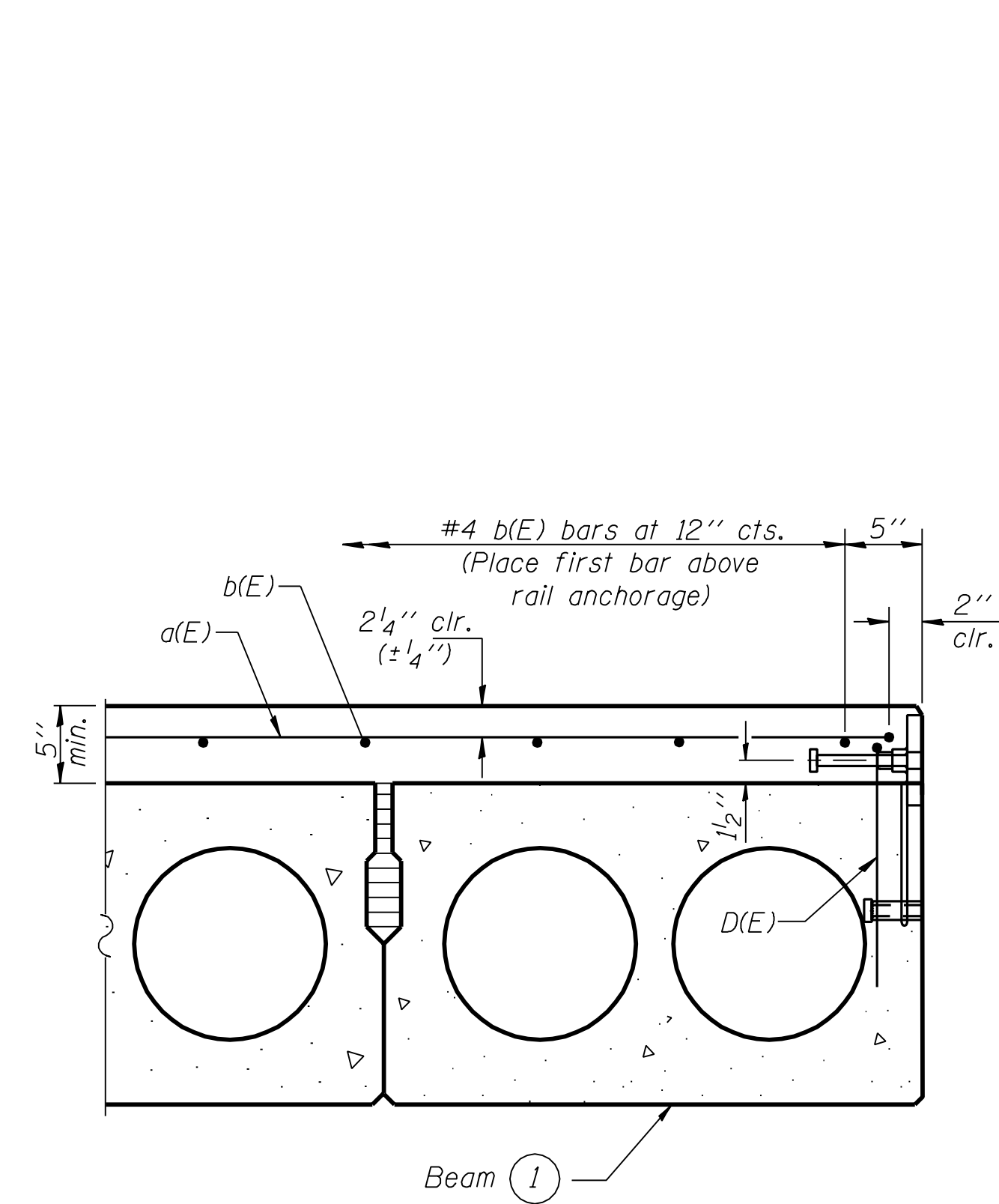
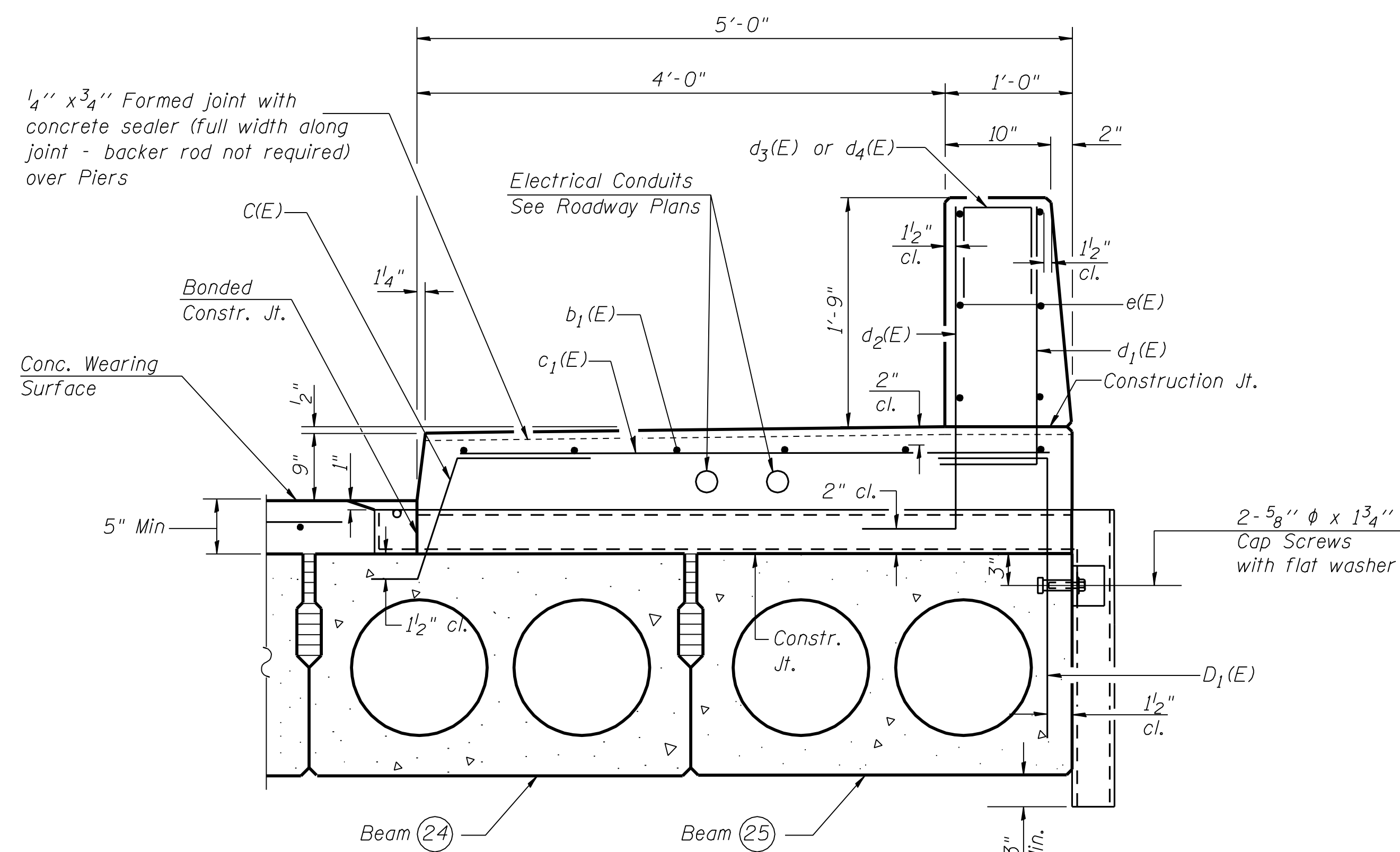


ROUTE NO.	SECTION	COUNTY	TOTAL SHEETS	SHEET NO.
F.A.P. 693	129 B-2	MCLEAN	34	28
FED. ROAD DIST. NO. 5	ILLINOIS PROJECT	Sheet 7 of 13 CONTRACT #70519		

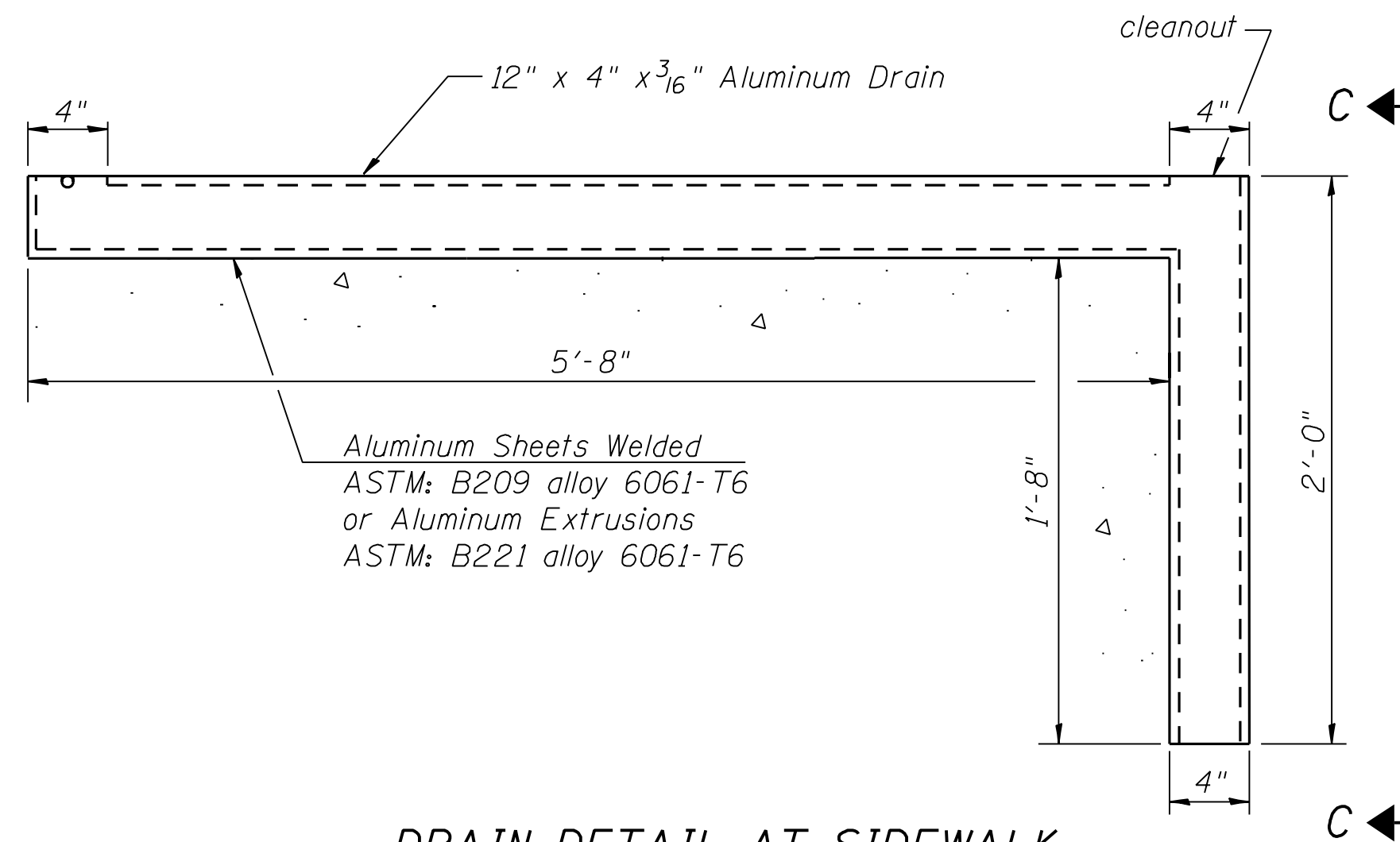


SECTION A-A

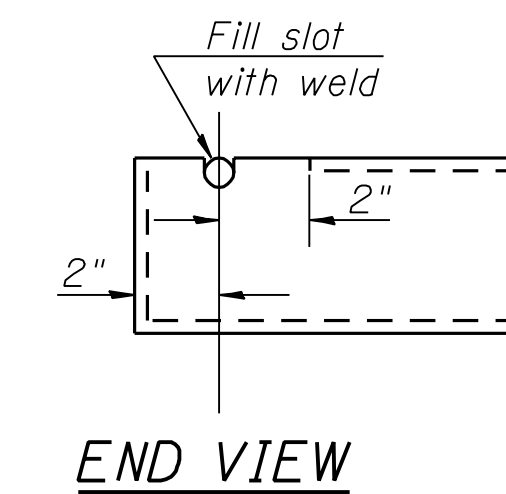
For bars C, D, & D₁(E) see sheet 9 of 13.
Cost included with Precast Prestressed Concrete Deck Beams (17" Depth)



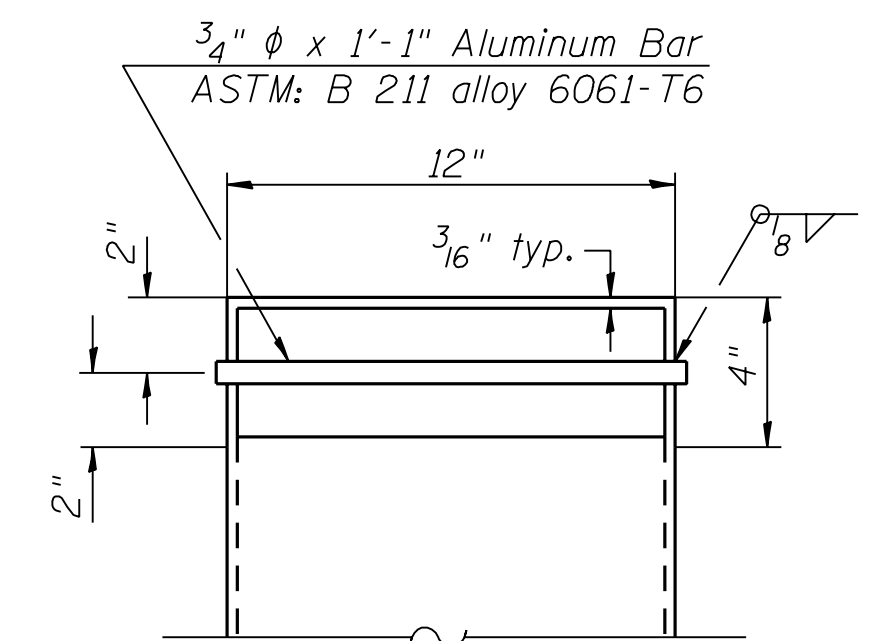
SECTION B-B



DRAIN DETAIL AT SIDEWALK

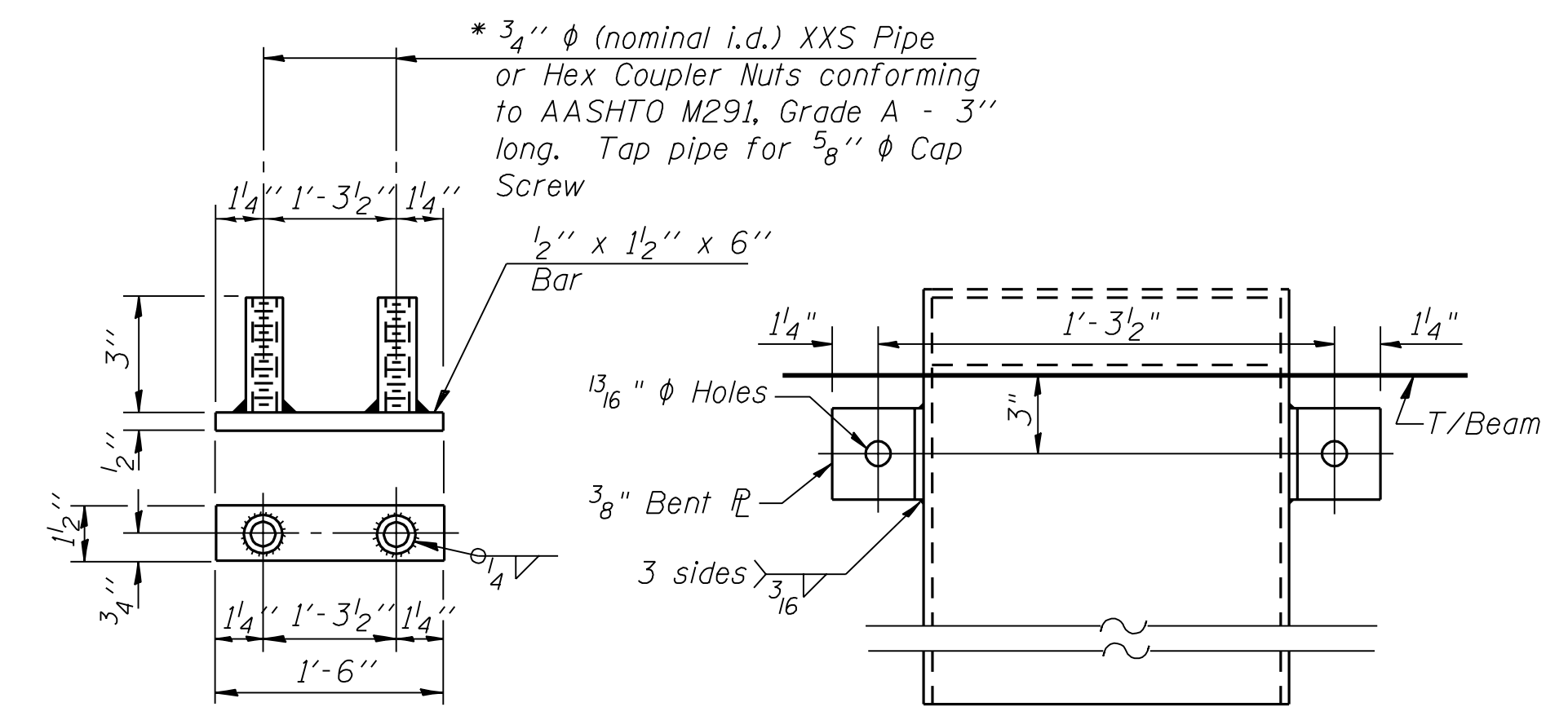


END VIEW



TOP PLAN

FLOOR DRAIN INLET DETAILS



ANCHOR DEVICE

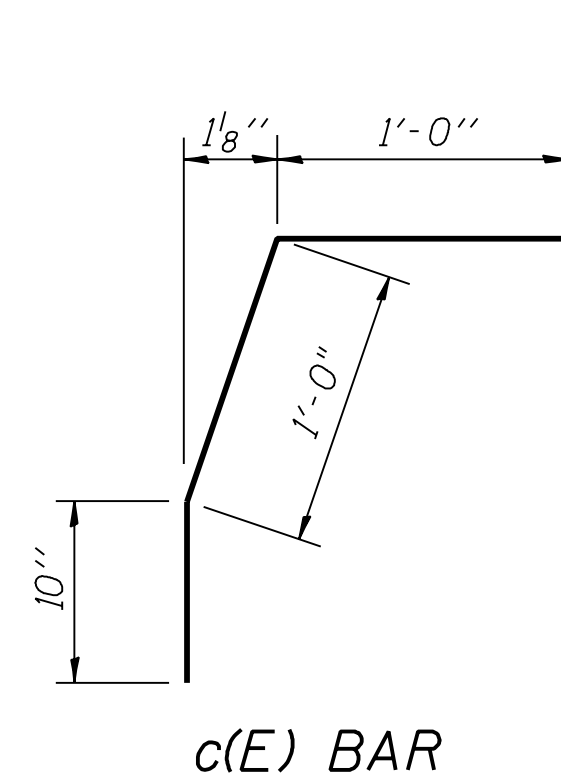
* Threaded areas shall be plugged or blocked off during casting of beam.

SECTION C-C

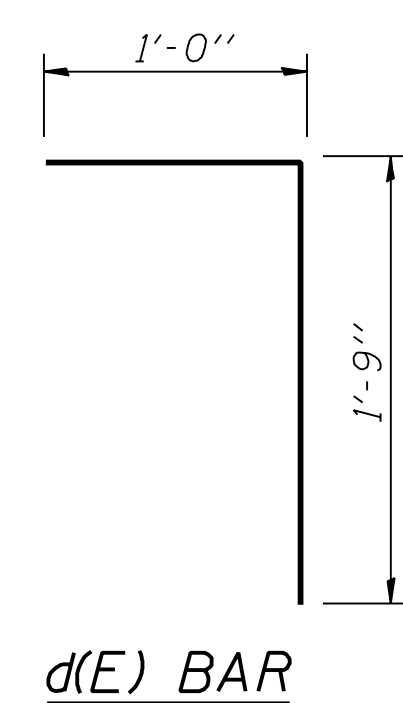
FLOOR DRAIN ANCHOR DETAILS

Notes:
The exterior surfaces of the floor drains shall be coated by the manufacturer with a color that matches the concrete.
All cap screws and washers shall be galvanized according to AASHTO M 232.
Anchor devices shall be galvanized after shop fabrication according to AASHTO M 111 and ASTM A 385.

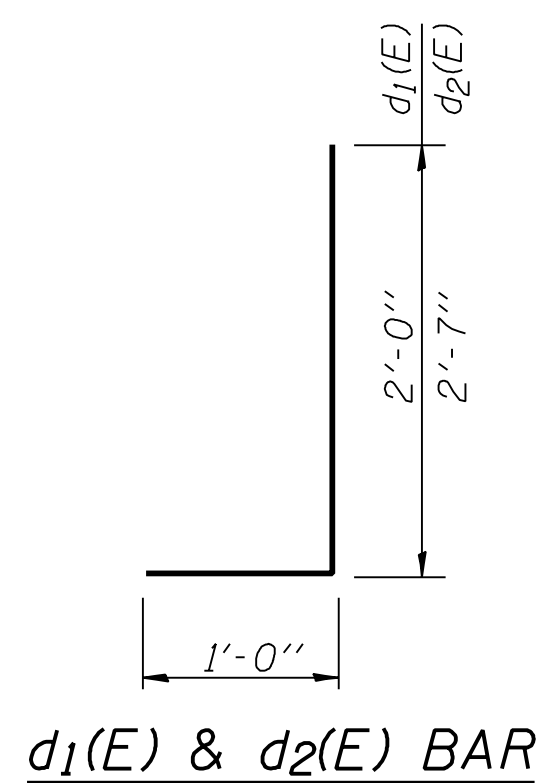
DESIGNED	T.S.H.
CHECKED	M.D.C.
DRAWN	A.A.N.
CHECKED	M.D.C.



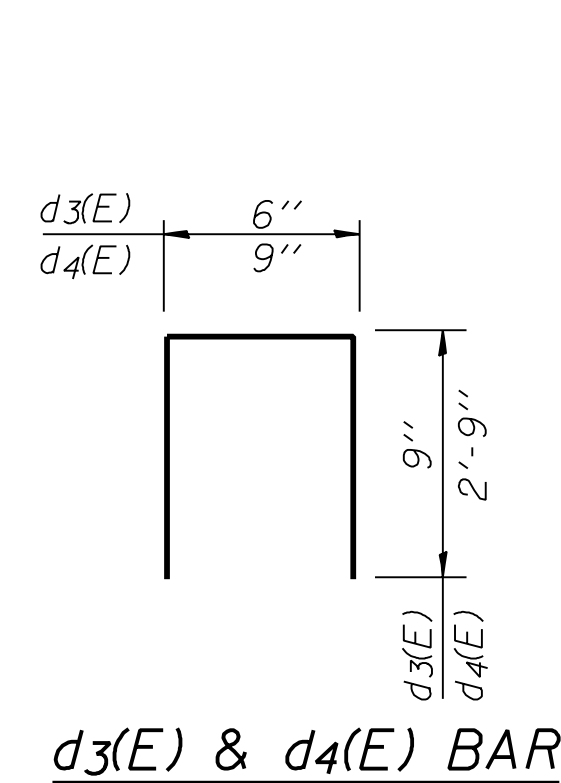
c(E) BAR



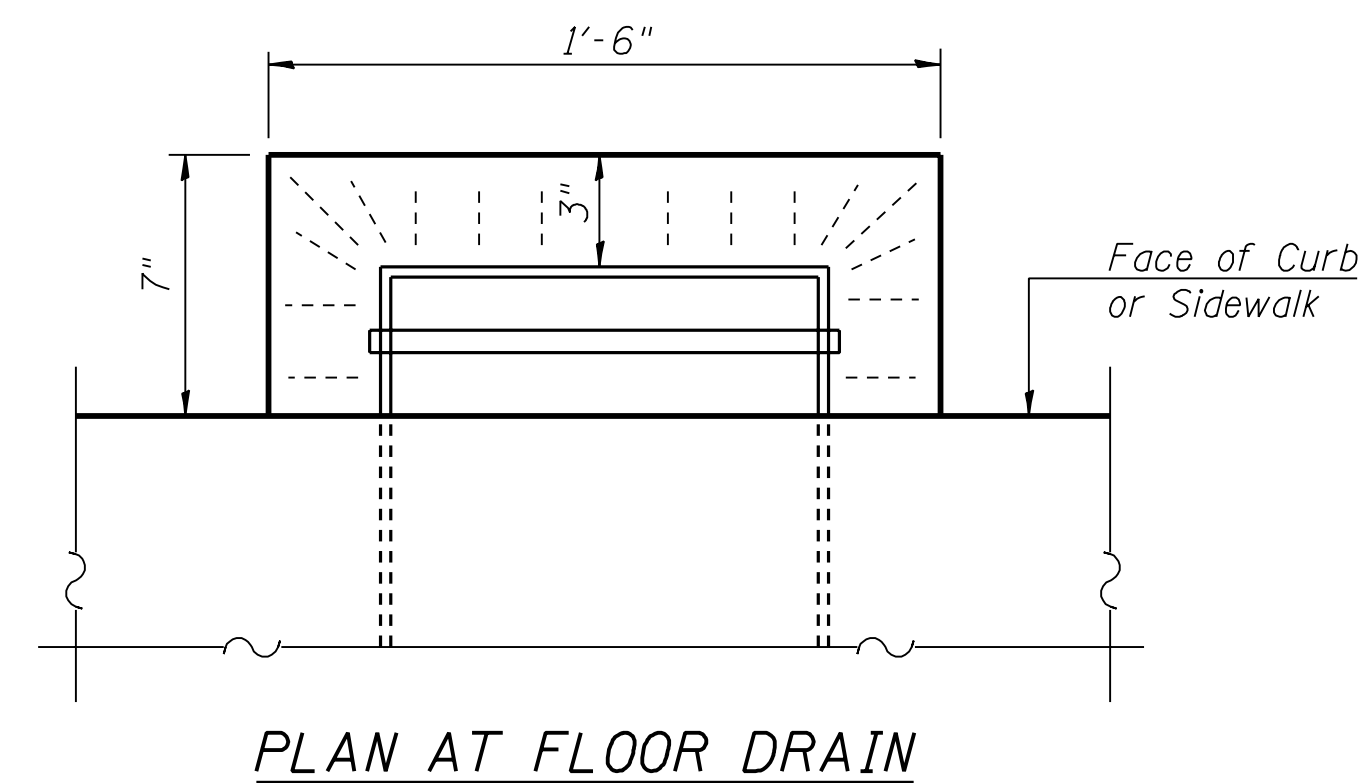
d(E) BAR



d₁(E) & d₂(E) BAR



d₃(E) & d₄(E) BAR



PLAN AT FLOOR DRAIN

SUPERSTRUCTURE DETAILS

ILLINOIS ROUTE 9 OVER SUGAR CREEK
F.A.P. ROUTE 693 - SEC. 129 B-2
MCLEAN COUNTY
STATION 67+94
STRUCTURE NO. 057-0190

CUMMINS ENGINEERING CORPORATION	JOB #: 2114.5
	FILE: 21145super
	DATE: 12/18/06