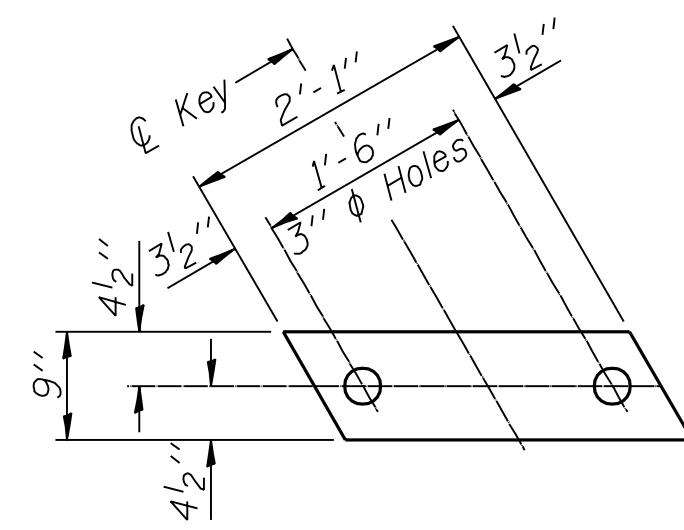
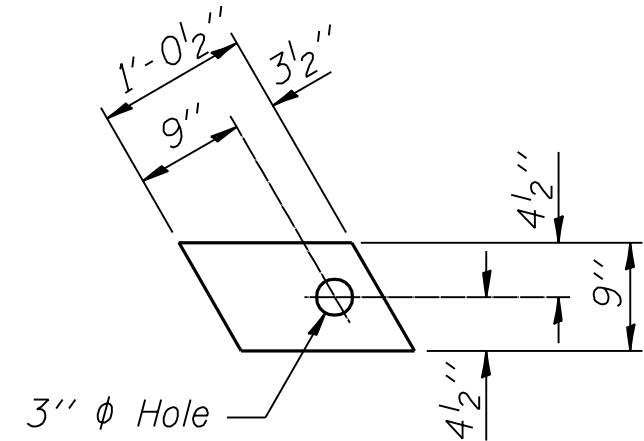


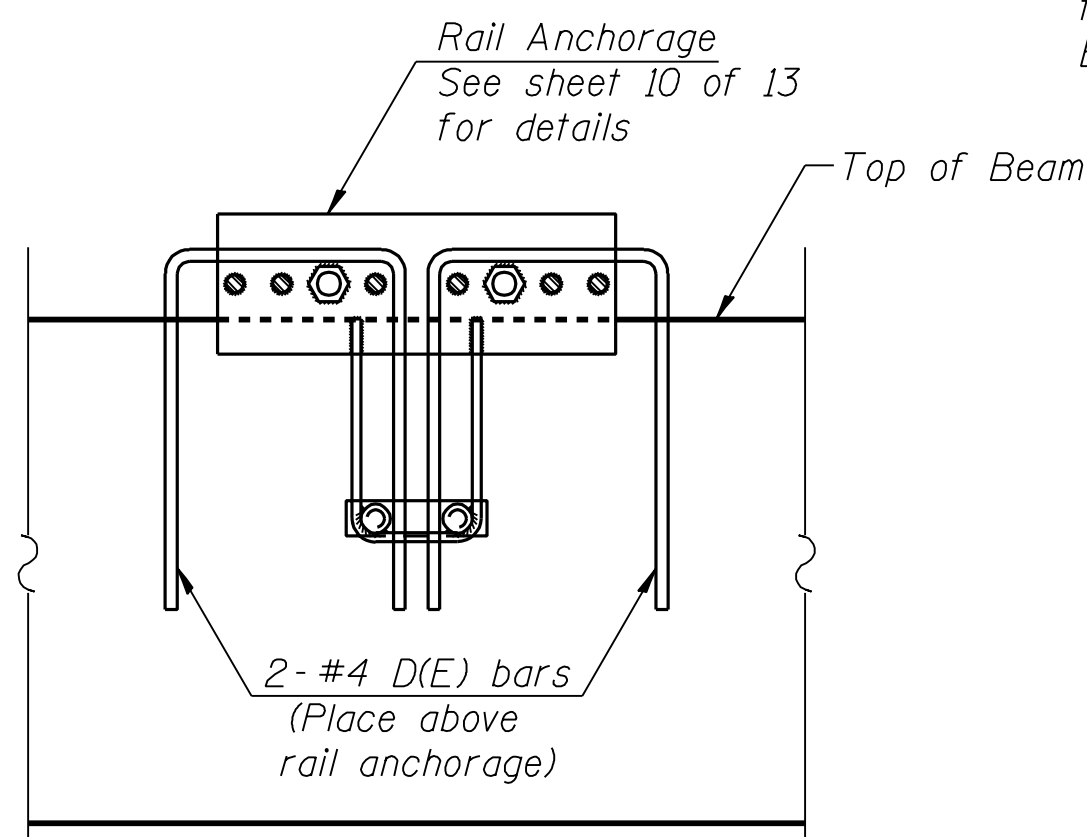
ROUTE NO.	SECTION	COUNTY	TOTAL SHEETS	SHEET NO.
F.A.P. 693	129 B-2	MCLEAN	34	30
FED. ROAD DIST. NO. 5	ILLINOIS PROJECT	Sheet 9 of 13 CONTRACT #70519		



**FABRIC BEARING PAD**  
(Interior)  
(144 Required)



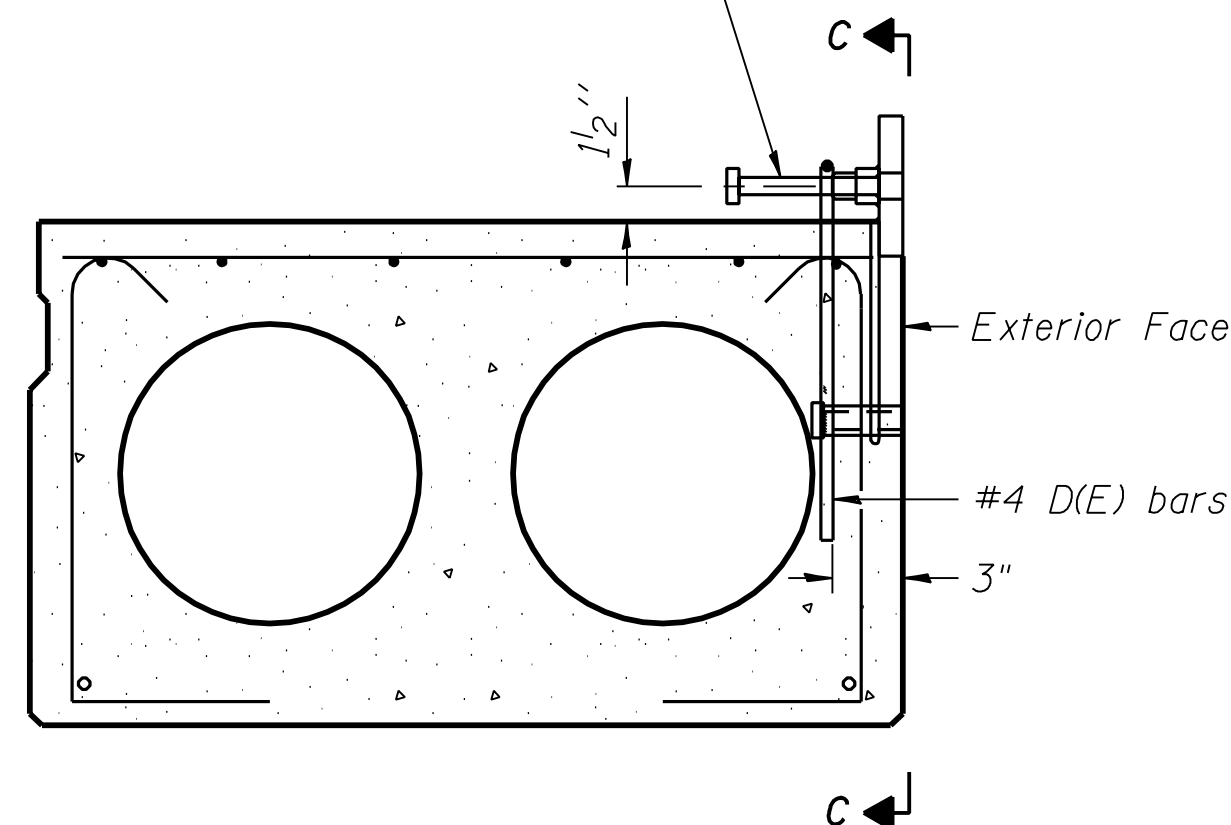
**FABRIC BEARING PAD**  
(Exterior)  
**FIXED**  
(12 Required)



**SECTION C-C**

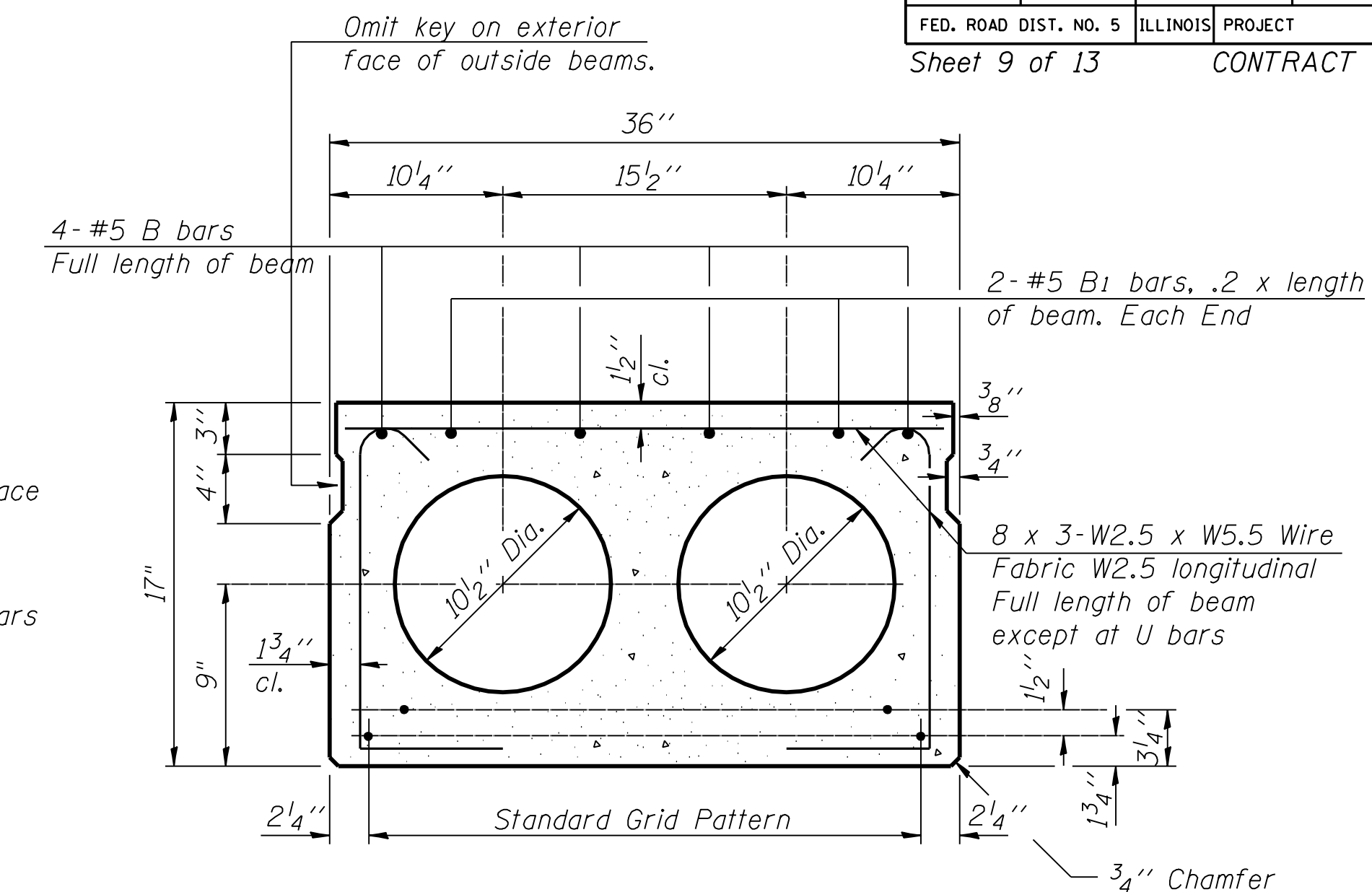
The rail anchorage shall be cast with the beam and the wearing surface shall be cast in the field. Formwork necessary for the wearing surface may be secured utilizing the bottom rail anchorage Inserts and/or additional inserts cast into beam. Drilling into the beam will not be permitted.

The Contractor shall ensure that neither the Rail Anchorage Device nor the Deck Beam is damaged during transportation.



**SECTION THRU EXTERIOR BEAM (1)**

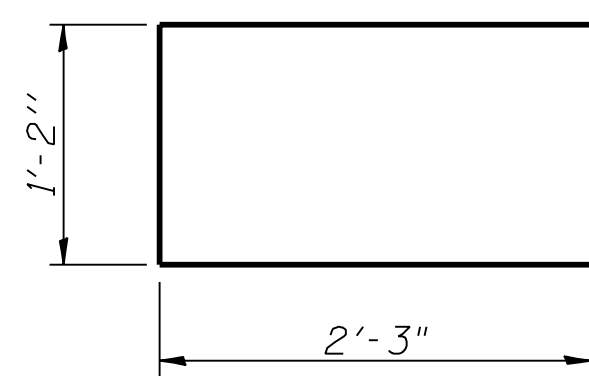
See Typical Section for strand pattern, dimensions and bar locations.



**TYPICAL SECTION**

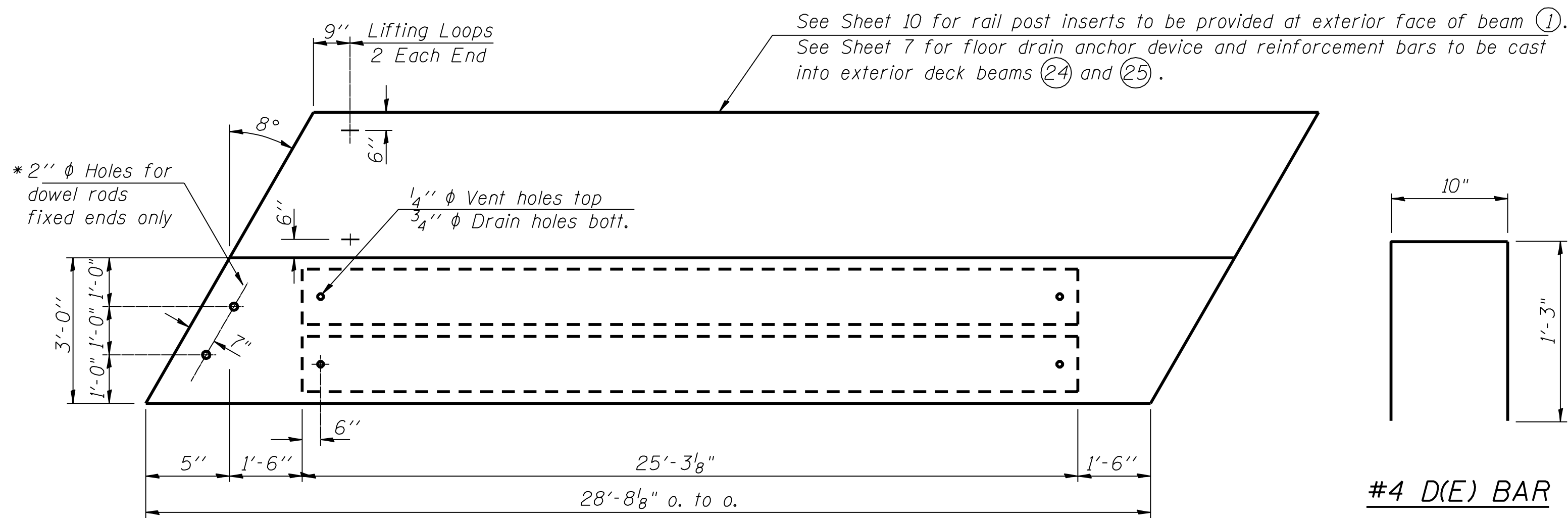
10-1/2"  $\phi$  Strands, Each Strand Stressed to 30,900 Lbs.  
6-Strands 1 3/4" up, 4-Strands 3/4" up.

Note:  
Place strands symmetrically about  $\phi$  of beam.



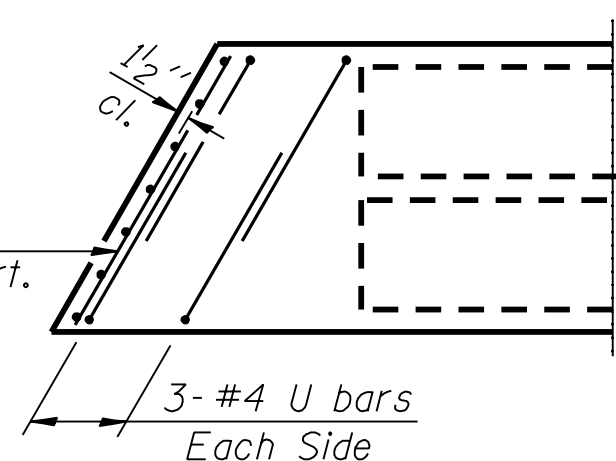
**BAR U**

\* Contractor to verify that old dowel rods do not interfere with the placement of the new dowel rods.

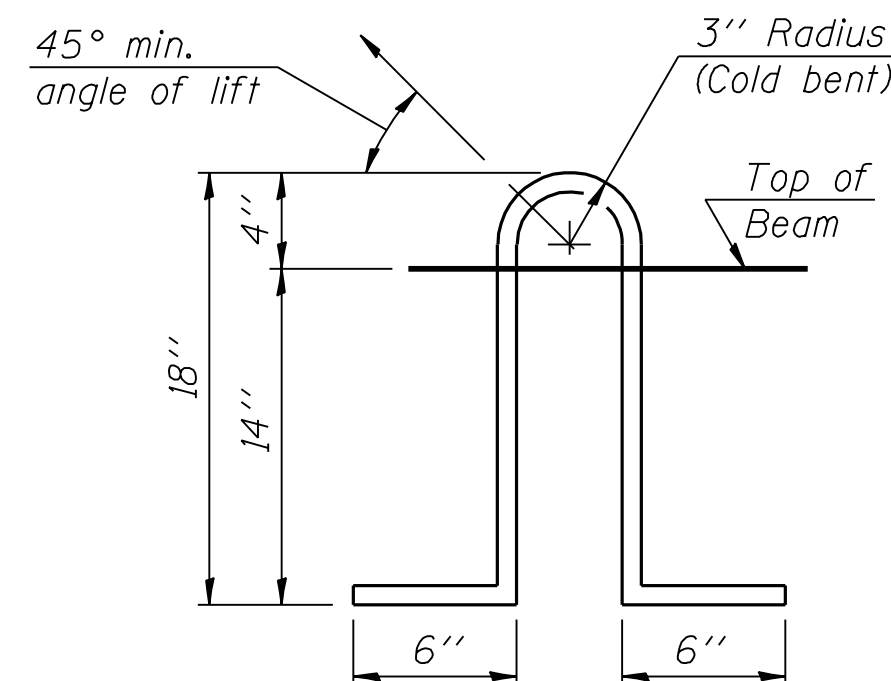


**PLAN**

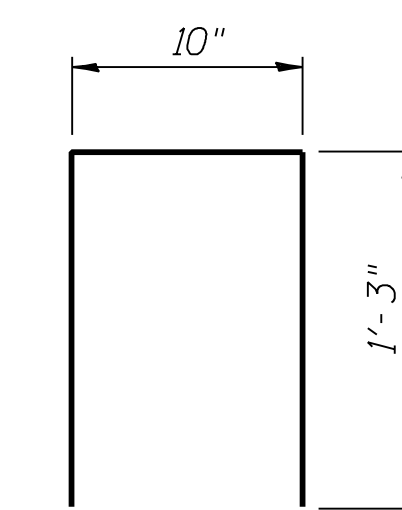
8 x 3-W2.5 x W5.5 Wire Fabric, W5.5 vert. Full depth of beam. Each End.



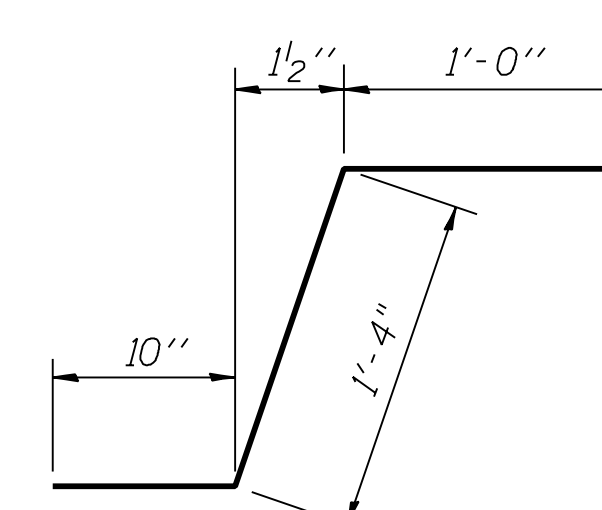
**END PLAN**



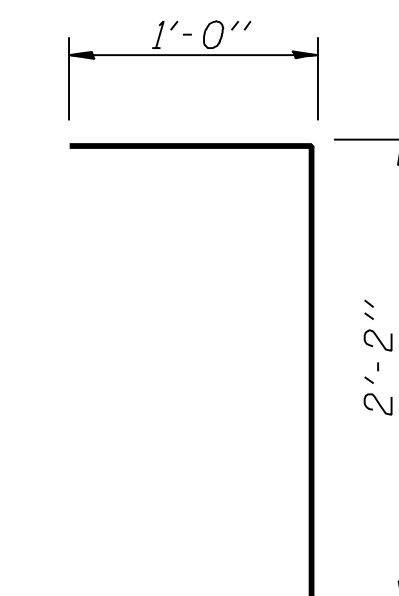
**LIFTING LOOP DETAIL**



**#4 D(E) BAR**  
(30 Required)

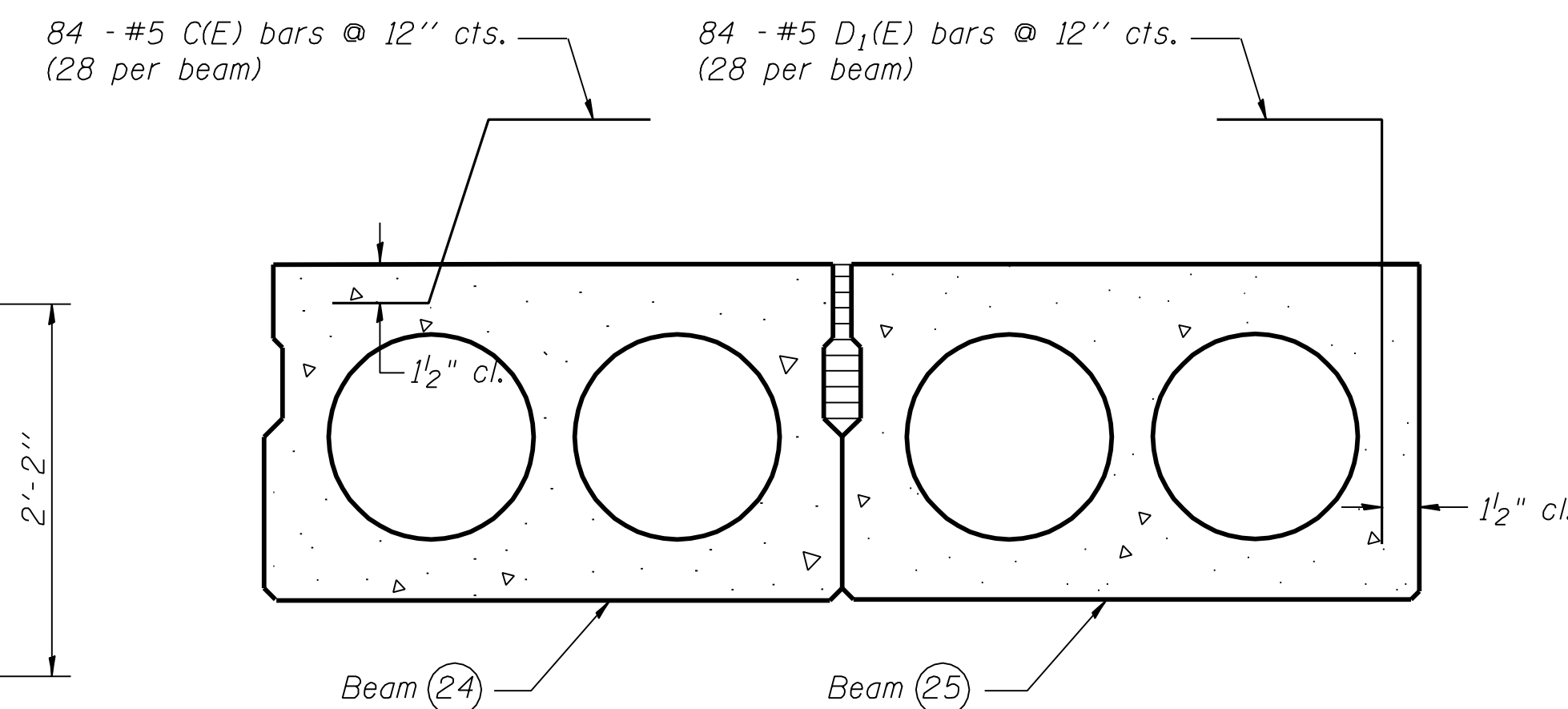


**C(E) BAR**  
(84 Required)



**D1(E) BAR**  
(84 Required)

Cost included with Precast Prestressed Concrete Deck Beams (17" Depth)



**SECTION THRU EXTERIOR BEAMS (24) & (25)**

See Typical Section for strand pattern, dimensions and bar locations.

**NOTES**

Prestressing steel shall be uncoated high strength, low relaxation 7-wire strand, Grade 270. The nominal diameter shall be 1/2" and the nominal cross-sectional area shall be 0.153 sq. in. Lifting loops shall be 2-1/2"  $\phi$ -270 ksi strands, as shown. Non prestressing steel shall conform to ASTM A 706 (IL MOD), Grade 60. The bearing seat surfaces shall be adjusted by shimming to assure firm and even bearing. Two 1/8" fabric adjusting shims of the dimensions of the Exterior Bearing Pad shall be provided for each bearing. Keyway surfaces shall be cleaned to remove form oil or other bond breaking material prior to shipment of the beams. Cleaning shall be done by sandblasting the keyway areas between top of the beam and the bottom edge of the key. Corrosion Inhibitor, per Article 1020.5(b)(12) of the Standard Specifications, shall be used in the concrete for precast prestressed concrete deck beams. Required Release Strength, f'ci, shall be 4,000 p.s.i. See Sheets 7, 10 & 11 for reinforcement bars, rail post anchor devices and floor drain anchors to be cast into exterior deck beams.

**BILL OF MATERIAL**

Item	Unit	Quantity
Precast Prestressed Concrete Deck Beams (17" Depth)	Sq. Ft.	6,453

**SUPERSTRUCTURE**

ILLINOIS ROUTE 9 OVER SUGAR CREEK  
F.A.P. ROUTE 693 - SEC. 129 B-2  
MCLEAN COUNTY  
STATION 67+94  
STRUCTURE NO. 057-0190

CUMMINS ENGINEERING CORPORATION	JOB #: 2114.5
	FILE: 21145beam
	DATE: 12/18/06

DESIGNED	T.S.H.
CHECKED	M.D.C.
DRAWN	A.A.N.
CHECKED	M.D.C.