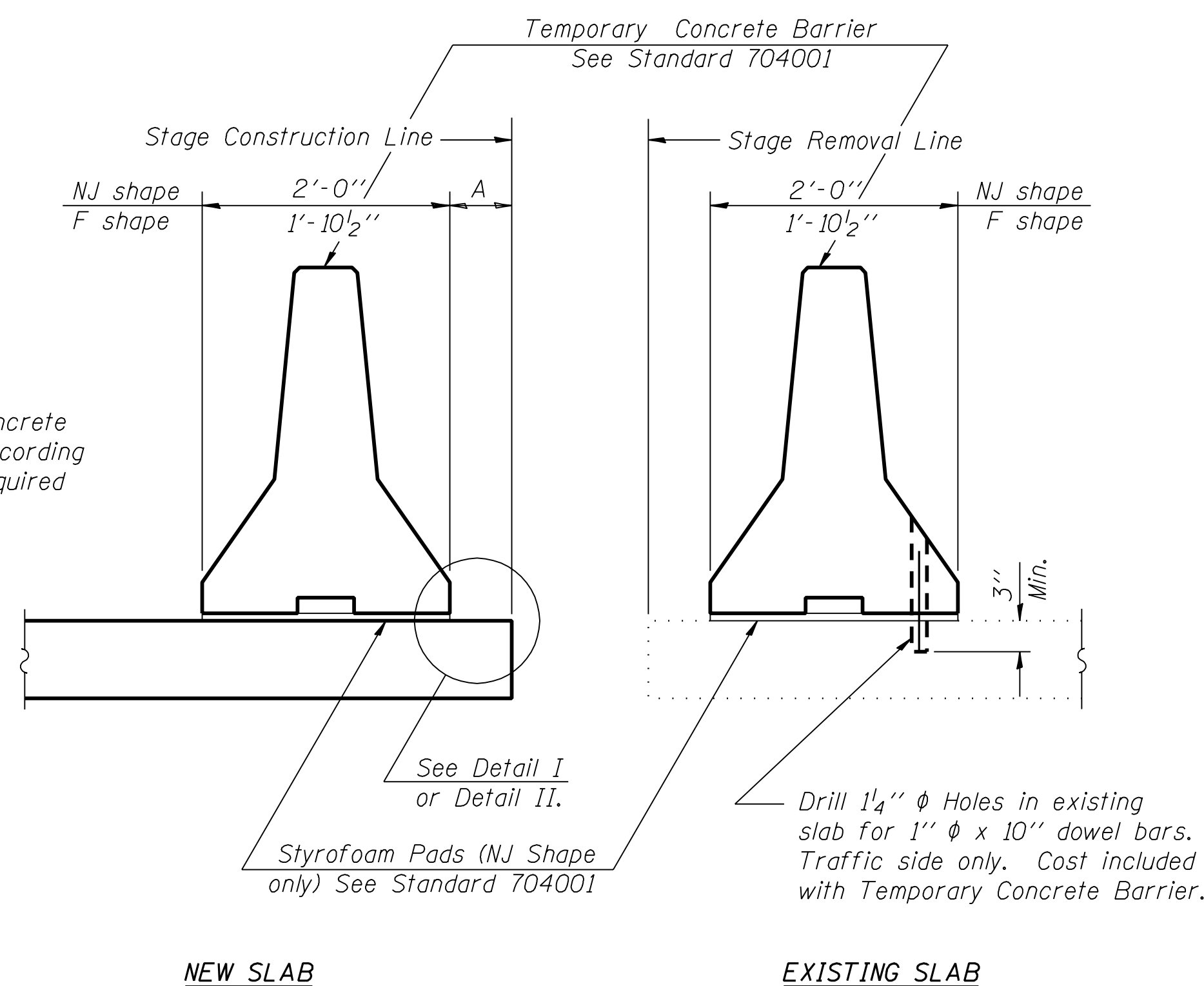


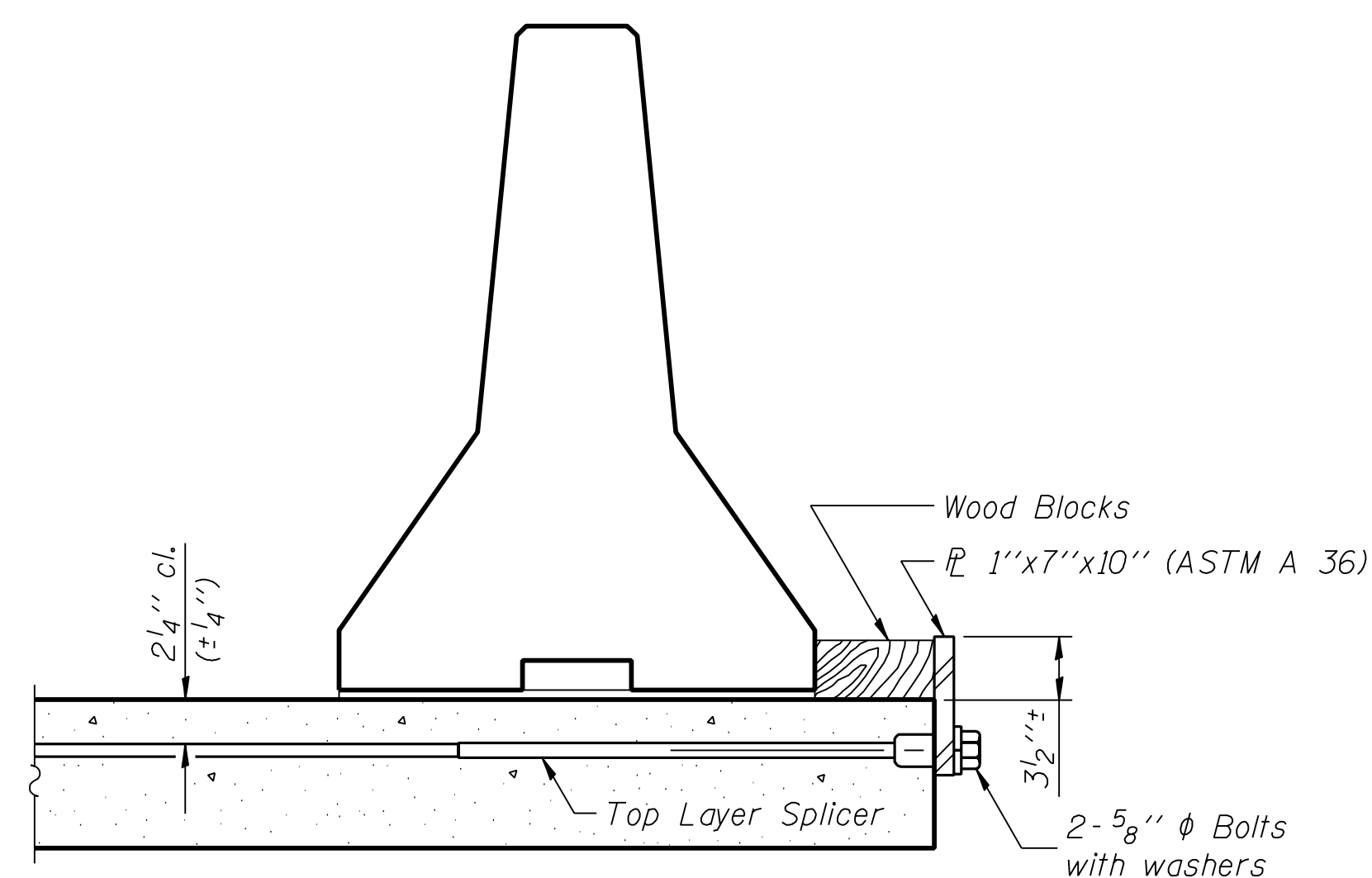
ROUTE NO.	SECTION	COUNTY	TOTAL SHEETS	SHEET NO.
F.A.P. 693	129 B-2	MCLEAN	34	34
FED. ROAD DIST. NO. 5	ILLINOIS PROJECT			
Sheet 13 of 13			CONTRACT #70519	



SECTIONS THRU SLAB

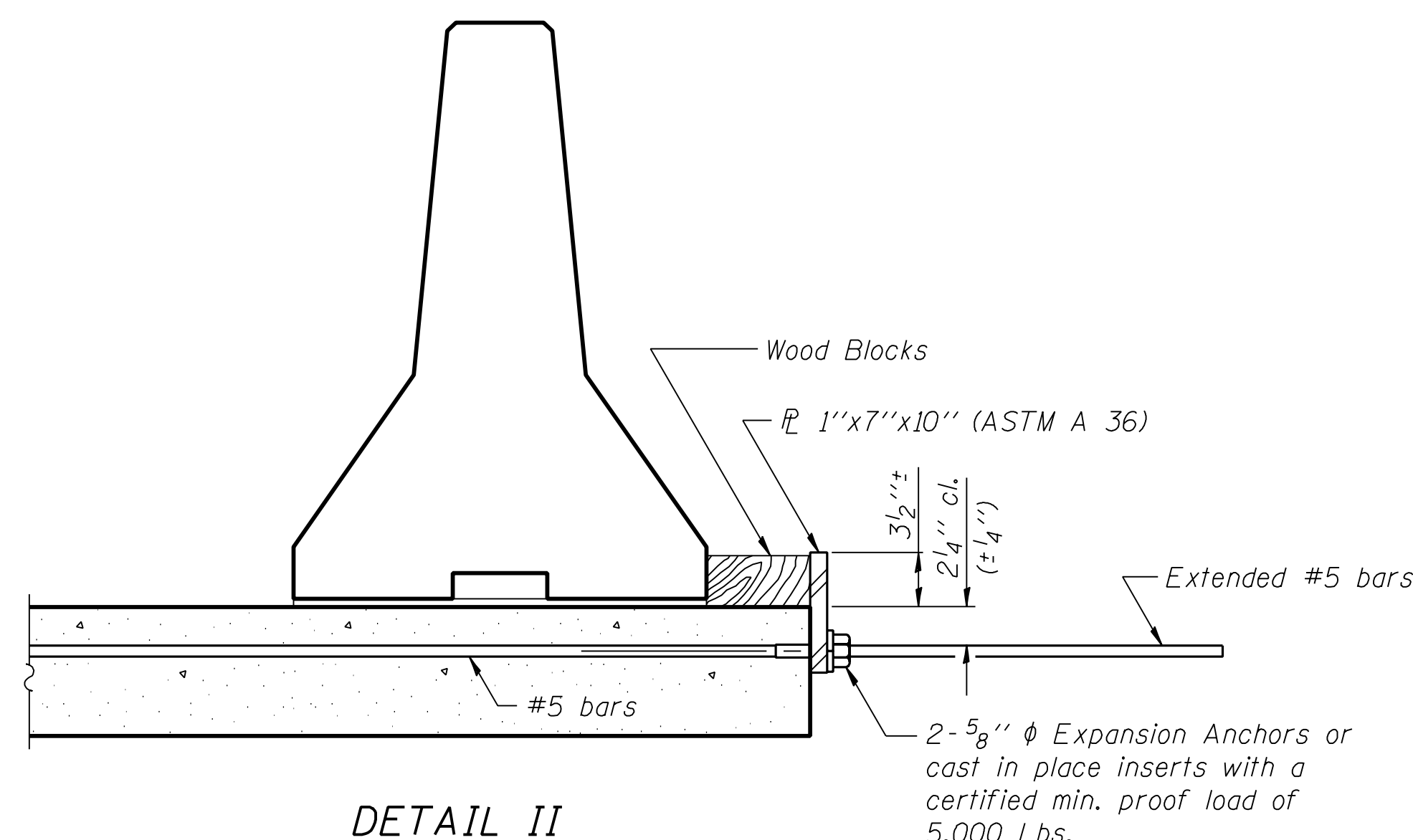
NOTES

- Detail I - With Bar Splicer or Couplers:**
Connect one (1) 1"x7"x10" steel PL to the top layer of couplers with 2-5/8" φ bolts screwed to coupler at approximate C of each barrier panel.
- Detail II - With Extended Reinforcement Bars:**
Connect one (1) 1"x7"x10" steel PL to the concrete slab with 2-5/8" φ Expansion Anchors or cast in place inserts spaced between the top layer of reinforcement at approximate C of each barrier panel.
Cost of anchorage is included with Temporary Concrete Barrier.



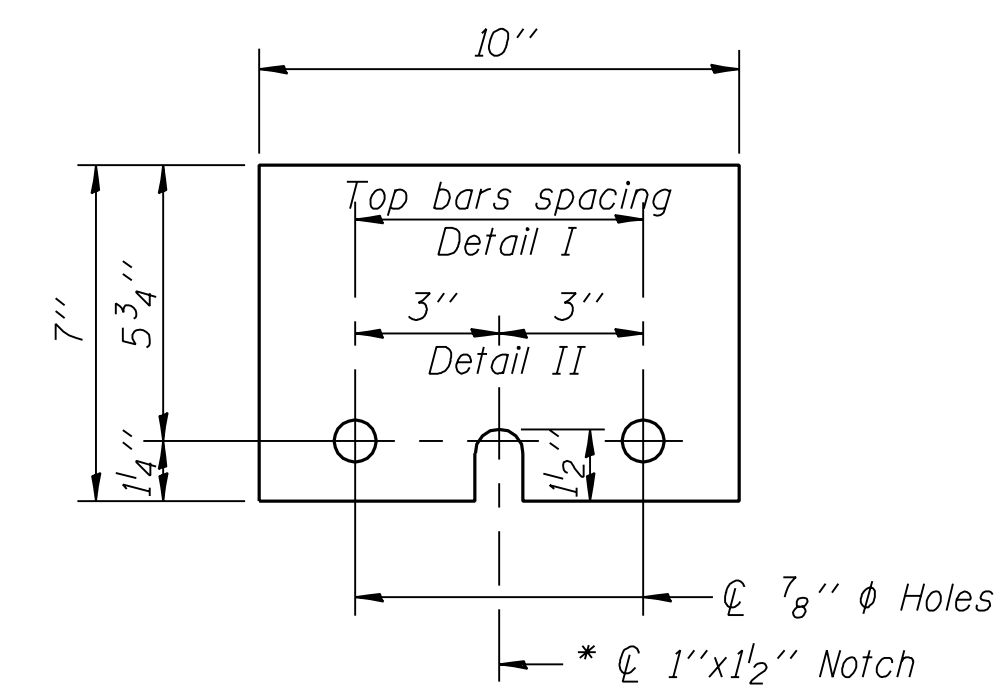
DETAIL I

The 1"x7"x10" Plate shall not be removed until Stage II Construction forms and reinforcement bars are in place.



DETAIL II

The 1"x7"x10" Plate shall not be removed until Stage II Construction forms and all reinforcement bars are in place and the concrete is ready to be placed.



PL 1"x7"x10"

* Required only with Detail II

DESIGNED	T.S.H.
CHECKED	M.D.C.
DRAWN	A.A.N.
CHECKED	M.D.C.

R-27 10-22-04

**TEMPORARY CONCRETE BARRIER
FOR STAGE CONSTRUCTION**

ILLINOIS ROUTE 9 OVER SUGAR CREEK
F.A.P. ROUTE 693 - SEC. 129 B-2
MCLEAN COUNTY
STATION 67+94
STRUCTURE NO. 057-0190

CUMMINS ENGINEERING CORPORATION	JOB #: 2114.5
	FILE: 21145barrier
	DATE: 12/18/06