

F.A.I. RTE.	SECTION	COUNTY	TOTAL SHEETS	SHEET NO.
74		VERMILION	105	31
STA. 1515+00.00		TO STA. 1515+50.00		
FED. ROAD DIST. NO.		ILLINOIS FED. AID PROJECT		
*D5 CABLE GUARD POOT-1				

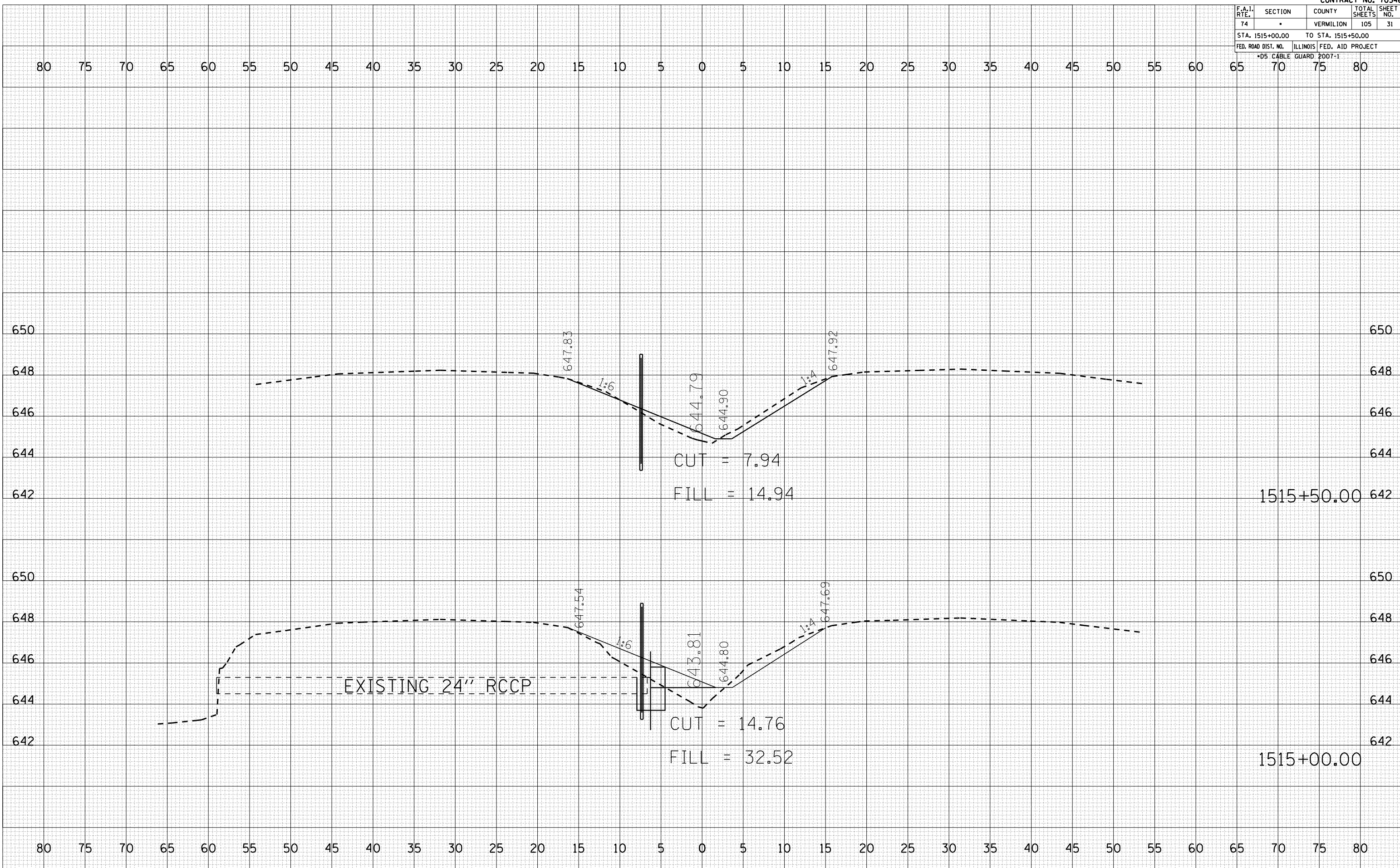
BY	DATE

FINAL SURVEY	SURVEYED
NOTE BOOK NO.	AREAS CHECKED

BY	DATE

ORIGINAL SURVEY	SURVEYED
NOTE BOOK NO.	AREAS CHECKED

PLOT DATE = 12/12/2006
 FILE NAME = 10151500.dwg
 PLOT SCALE = 1/8" = 1' IN.
 USER NAME = craige



1515+50.00

1515+00.00