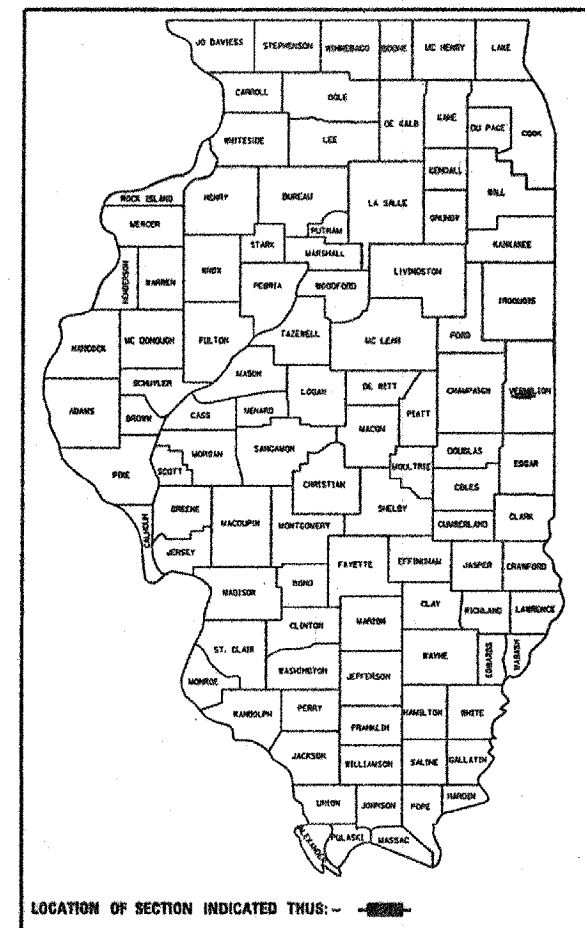


| F.A.I. RTE. | SECTION | COUNTY | TOTAL SHEETS | SHEET NO. |
|-------------|---------|-----------|--------------|-----------|
| 74 | | VERMILION | 8 | 1 |

D5 CRACK & JOINT SEAL 2007-1

D-95-078-06



STATE OF ILLINOIS
DEPARTMENT OF TRANSPORTATION
DIVISION OF HIGHWAYS

**PROPOSED
HIGHWAY PLANS**

SECTION D5 CRACK & JOINT SEAL 2007-1

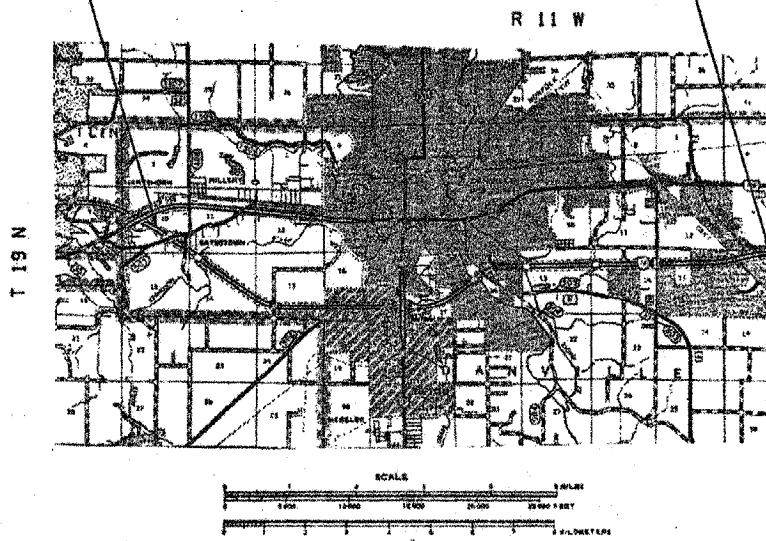
F.A.I. - 74, STA. 1720+00 EB & WB TO STA. 2331+13.24 INDIANA STATE LINE

C-95-078-06

ROUT & SEAL CRACKS

SECTION D5 CRACK & JOINT SEAL 2006-1
BEGINS @ STATION 1720+00.00

SECTION D5 CRACK & JOINT SEAL 2006-1
ENDS @ STATION 2231+13.24



SEE SHEET 3
FOR OMISSIONS



TOTAL LENGTH OF SECTION = 51,113.24 FT. = 9.681 MILES
NET LENGTH OF SECTION = 46,841.68 FT. = 8.872 MILES

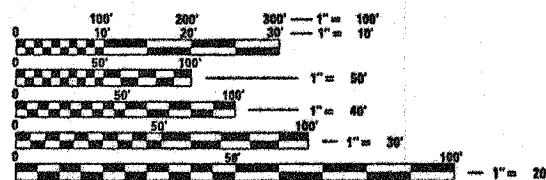
FOR INDEX OF SHEETS, SEE SHEET NO. 2
FOR SUMMARY OF QUANTITIES, SEE SHEET NO. 5

CURRENT ADT

28,500 (2005)

DESIGN DESIGNATION

N/A



FULL SIZE PLANS HAVE BEEN PREPARED USING STANDARD ENGINEERING SCALES. REDUCED SIZED PLANS WILL NOT CONFORM TO STANDARD SCALES. IN MAKING MEASUREMENTS ON REDUCED PLANS, THE ABOVE SCALES MAY BE USED.

J.U.L.I.E.
JOINT UTILITY LOCATION INFORMATION FOR EXCAVATION
1-800-892-0123

CONTRACT NO. 70563

STATE OF ILLINOIS
DEPARTMENT OF TRANSPORTATION
DIVISION OF HIGHWAYS

SUBMITTED DEC 22 2006

[Signature]
DEPUTY DIRECTOR OF HIGHWAYS, REGION ENGINEER

February 2, 2007
[Signature]
REGIONAL ENGINEER OF DESIGN AND ENVIRONMENT

February 2, 2007
[Signature]
MELTON R. SECO, P.E./P.D.
DIRECTOR OF HIGHWAYS, CHIEF ENGINEER

**PRINTED BY THE AUTHORITY
OF THE STATE OF ILLINOIS**

PLOT DATE = 12/19/2006
 FILE NAME = c:\projects\70563\plan.dgn
 PLOT SCALE = 43.2355 / 7
 USER NAME = p1000000
 DESIGNER: MATTHEW W. MURPHY
 SQUAD LEADER: ROBERT M. NELSON
 PROJECT ENGINEER: KENSIL A. GARNETT
 (217) 465-4181

| F.A.I. R.T.E. | SECTION | COUNTY | TOTAL SHEETS | SHEET NO. |
|------------------|---------|-----------|-----------------|--------------|
| 74 | * | VERMILION | 8 | 2 |

* D5 CRACK & JOINT SEAL 2007-1

INDEX OF SHEETS

| <u>SHEET NO.</u> | <u>ITEM</u> |
|------------------|---|
| 1 | COVER SHEET |
| 2 | INDEX OF SHEETS |
| 2 | LIST OF STANDARDS |
| 3 | LOCATION MAP |
| 4 | GENERAL NOTES |
| 5 | SUMMARY OF QUANTITIES |
| 6-7 | TYPICAL CROSS SECTIONS |
| 8 | SPECIAL DETAIL FOR RAMP WORK AREAS |
| 8 | TYPICAL DETAILS FOR CRACK SEALING FOR HOT-MIX ASPHALT PAVEMENT |

LIST OF STANDARDS

| <u>STANDARD NUMBER</u> | <u>NAME OF STANDARD</u> |
|------------------------|--|
| 701400-02 | APPROACH TO LANE CLOSURE, FREEWAY/EXPRESSWAY |
| 701406-04 | LANE CLOSURE, FREEWAY/EXPRESSWAY DAY OPERATIONS ONLY |
| 701411-03 | LANE CLOSURE, MULTILANE, AT ENTRANCE OR EXIT RAMP, FOR SPEEDS \geq 45 MPH |
| 701446 | TWO LANE CLOSURE, FREEWAY/EXPRESSWAY |
| 702001-06 | TRAFFIC CONTROL DEVICES |

| F.A.I. RTE. | SECTION | COUNTY | TOTAL SHEETS | SHEET NO. |
|-------------|---------|-----------|--------------|-----------|
| 74 | * | VERMILION | 8 | 3 |

* D5 CRACK & JOINT SEAL 2007-1

LOCATION MAP

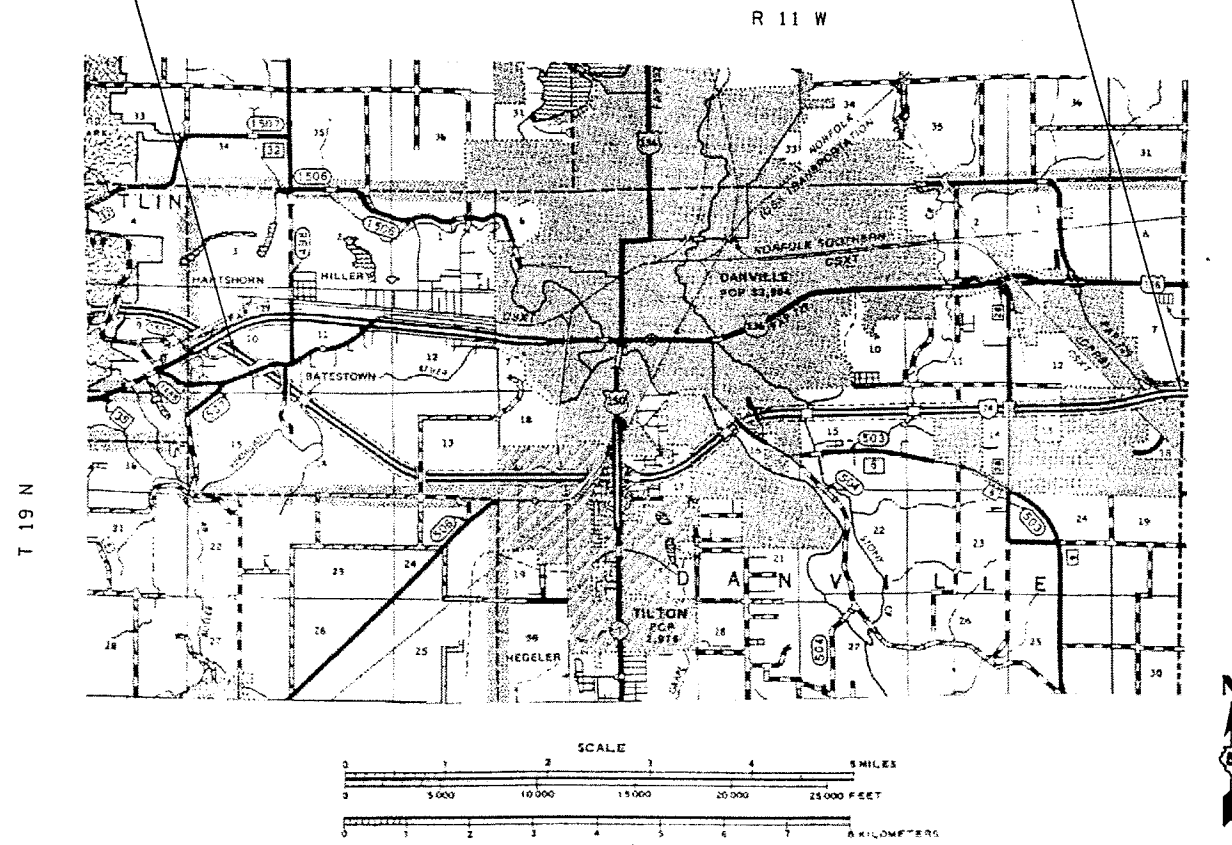
F.A.I. 74, FROM STA. 1720+00.00 TO STA. 2231+13.24 INDIANA STATE LINE

VERMILION COUNTY /URBAN MULTI-LANE

OMISSIONS FROM RESURFACING:
 STATION 1750+93.83 TO STATION 1758+43.50
 STATION 1875+57.43 TO STATION 1879+22.43
 STATION 1889+74.81 TO STATION 1902+59.98
 STATION 1989+14.75 TO STATION 1996+30.02
 STATION 2032+80.78 TO STATION 2034+52.28
 STATION 2035+94.00 TO STATION 2039+51.00
 STATION 2201+70.83 TO STATION 2205+41.83
 STATION 2212+42.15 TO STATION 2214+99.10

SECTION D5 CRACK & JOINT SEAL 2006-1
 BEGINS @ STATION 1720+00.00

SECTION D5 CRACK & JOINT SEAL 2006-1
 ENDS @ STATION 2231+13.24



TOTAL LENGTH OF SECTION = 51,113.24 FT. = 9.681 MILES
 NET LENGTH OF SECTION = 46,841.68 FT. = 8.872 MILES

PLOT DATE = 12/16/2006
 FILE NAME = c:\p\projects\4507806 (v8)\70563\locn.dgn
 PLOT SCALE = 43.2355 / IN.
 USER NAME = pier50nbr

| F.A.I. RTE. | SECTION | COUNTY | TOTAL SHEETS | SHEET NO. |
|-------------|---------|-----------|--------------|-----------|
| 74 | * | VERMILION | 8 | 4 |

• D5 CRACK & JOINT SEAL 2007-1

GENERAL NOTES

G. N. - 100
 ENGLISH UNITS OF MEASUREMENT SHALL GOVERN OVER AND SUPERSEDE ANY METRIC UNITS SHOWN IN THIS CONTRACT. WHERE INCLUDED, METRIC UNITS ARE FOR INFORMATION ONLY.
 G. N. - 451 (SPECIAL)
 CRACK ROUTING AND FILLING CONSISTS OF BOTH LONGITUDINAL AND TRANSVERSE CRACKS. AN APPLICATION RATE OF 0.40 LBS./FOOT WAS USED TO DETERMINE CRACK FILLING QUANTITIES. THE SEALANT WILL BE DUSTED WITH FINE SAND, PORTLAND CEMENT, OR MINERAL FILLER, OR COVERED WITH TISSUE PAPER TO PREVENT TRACKING.

THE INTENT AT THIS LOCATION, IS TO ROUT AND SEAL THE ENTIRE CENTERLINE & AUXILIARY LANE JOINTS, ALL TRANSVERSE CRACKS AND MISCELLANEOUS LONGITUDINAL CRACKS IN THE EXISTING PAVEMENT.

LONGITUDINAL: 31,622 LBS
 TRANSVERSE : 4,097 LBS
 TOTAL: 35,719 LBS

NOTE: ANY CHANGES TO THE INTENT OF ROUTING AND SEALING AT THE ABOVE LISTED LOCATIONS SHALL BE APPROVED BY THE ENGINEER.

G. N. - 451A (SPECIAL)

THE SECTION OF 452.04, WHICH REFERS TO BACKER ROD PLACEMENT, SHALL ALSO APPLY TO THIS CONTRACT. THIS WORK SHALL BE PERFORMED AT THE DISCRETION OF THE ENGINEER IN ORDER TO KEEP THE APPLICATION RATE OF JOINT FILLER AS CLOSE TO THE DESIGN RATE OF 0.40 LBS./FOOT AS POSSIBLE. FURNISHING AND INSTALLING BACKER ROD WHEN REQUIRED BY THE ENGINEER WILL BE PAID FOR ACCORDING TO ARTICLE 109.04.

NO COMMITMENTS

| F.A.I. RITE. | SECTION | COUNTY | TOTAL SHEETS | SHEET NO. |
|--------------|---------|-----------|--------------|-----------|
| 74 | * | VERMILION | 8 | 5 |

* D5 CRACK & JOINT SEAL 2007-1

SUMMARY OF QUANTITIES

LOCATION OF WORK: F. A. I. 74
D5 CRACK & JOINT SEAL 2007-1
VERMILION COUNTY

VERMILION CO.
URBAN
100 % STATE
ROUT & SEAL

CONSTRUCTION TYPE CODE:

F000

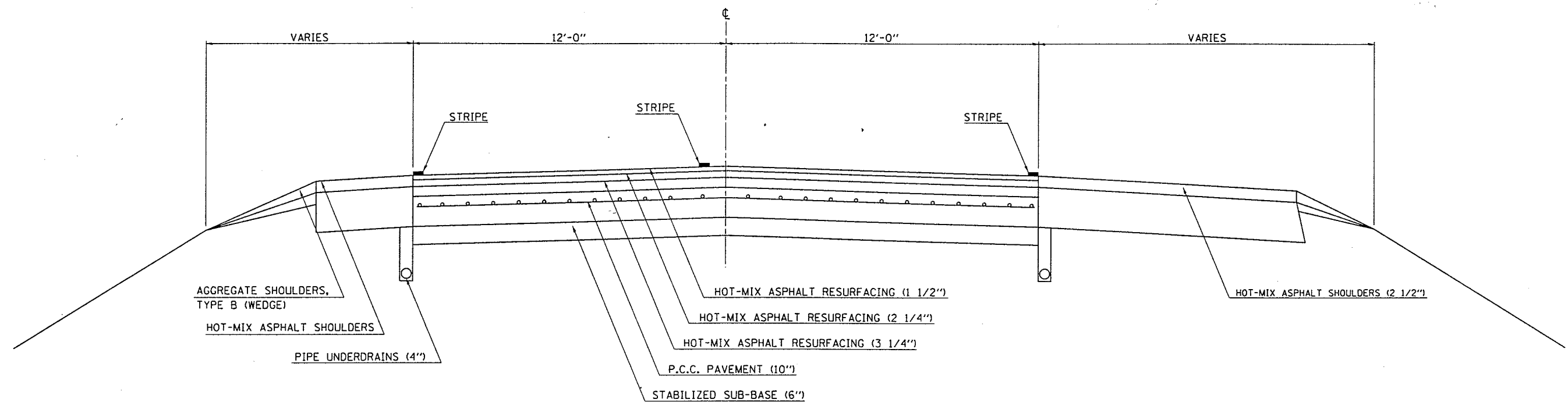
| CODE NO | ITEM | UNIT | TOTAL QUANTITY | QUANTITY |
|----------|--|-------|----------------|----------|
| 45100100 | CRACK ROUTING (PAVEMENT) | FOOT | 89,297.0 | 89,297.0 |
| 45100200 | CRACK FILLING | POUND | 35,719.0 | 35,719.0 |
| 67100100 | MOBILIZATION | L SUM | 1.0 | 1.0 |
| 70100420 | TRAFFIC CONTROL AND PROTECTION 701411 | EACH | 20.0 | 20.0 |
| 70100430 | TRAFFIC CONTROL AND PROTECTION 701446 | EACH | 2.0 | 2.0 |
| 70100700 | TRAFFIC CONTROL AND PROTECTION 701406 | L SUM | 1.0 | 1.0 |
| 70101800 | TRAFFIC CONTROL AND PROTECTION (SPECIAL) | L SUM | 1.0 | 1.0 |

| F.A.I. RTE. | SECTION | COUNTY | TOTAL SHEETS | SHEET NO. |
|-------------|---------|-----------|--------------|-----------|
| 74 | | VERMILION | 8 | 6 |

• D5 CRACK & JOINT SEAL 2007-1

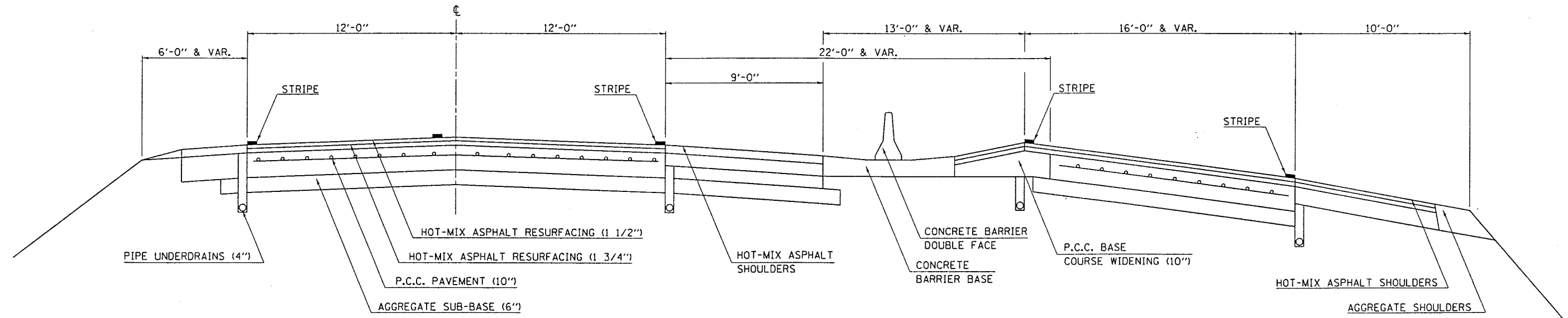
TYPICAL CROSS SECTION 1A

STATION 1720+00.00 TO STATION 1908+00.00 (1B)
 (1B) 1951+50.00 TO STATION 2231+13.24



TYPICAL CROSS SECTION 1B

STATION 1908+00.00 TO STATION 1951+50.00 (1A)



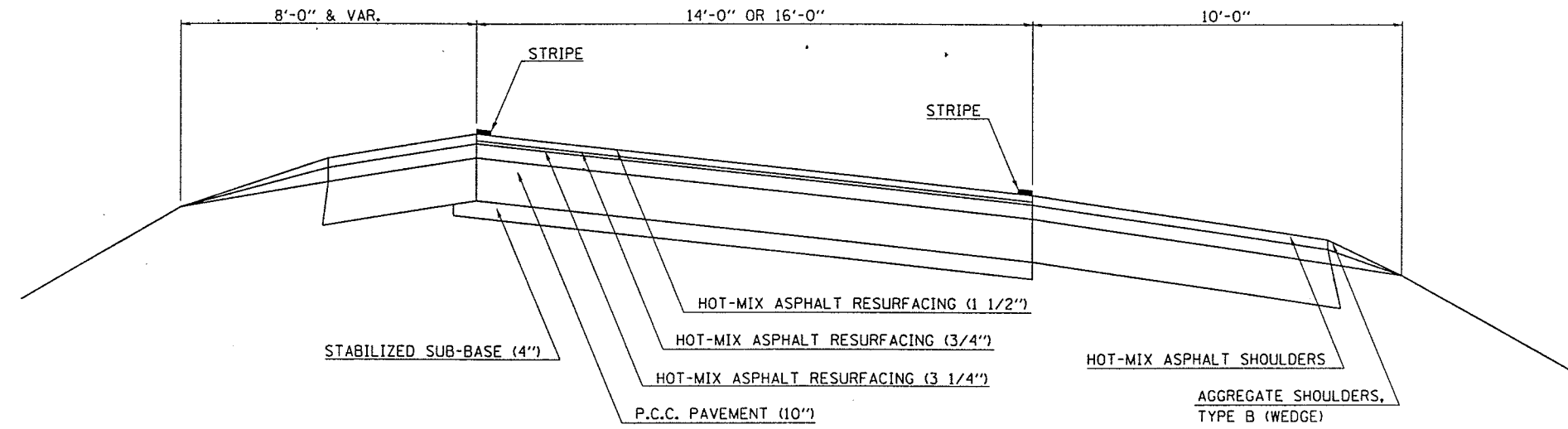
PLOT DATE = 12/6/2006
 FILE NAME = c:\projects\d507806 (v8)\70563plan.dgn
 PLOT SCALE = 43.2355' / IN.
 USER NAME = plersonbr

| F.A.I. RTE. | SECTION | COUNTY | TOTAL SHEETS | SHEET NO. |
|-------------|---------|-----------|--------------|-----------|
| 74 | - | VERMILION | 8 | 7 |

• D5 CRACK & JOINT SEAL 2007-1

TYPICAL CROSS SECTION 1C

| | | | |
|---------------|------------------|--------------------|-------------------|
| <u>TILTON</u> | <u>IL RTE. 1</u> | <u>BOWMAN AVE.</u> | <u>LYNCH SPUR</u> |
| RAMP A | RAMP A RAMP E | RAMP A | RAMP A |
| RAMP B | RAMP B RAMP F | RAMP B | RAMP B |
| RAMP C | RAMP C RAMP G | RAMP C | RAMP C |
| RAMP D | RAMP D RAMP H | RAMP D | RAMP D |



| 70100430 TRAFFIC CONTROL AND PROTECTION 701446 | |
|--|-----------------|
| LOCATION | EACH |
| BOWMAN AVENUE INTERCHANGE EAST BOUND THREE LANE AREA | 1.0 |
| BOWMAN AVENUE INTERCHANGE WEST BOUND THREE LANE AREA | 1.0 |
| TOTAL: | 2.0 EACH |

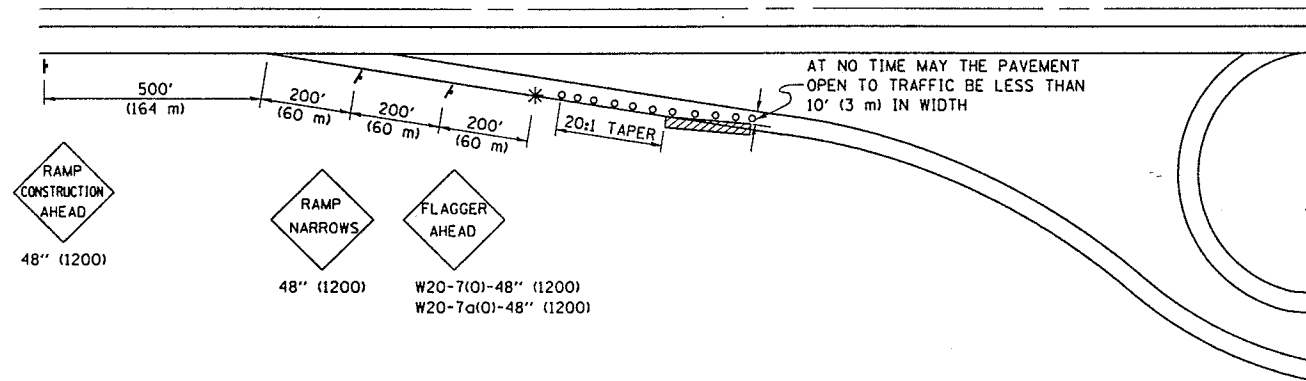
PLOT DATE = 12/6/2006
 FILE NAME = c:\p\projects\507806 (v8)\70563plan.dgn
 PLOT SCALE = 43.2355 / IN.
 USER NAME = piersonbr

| F.A.I. RTE. | SECTION | COUNTY | TOTAL SHEETS | SHEET NO. |
|-------------|---------|-----------|--------------|-----------|
| 74 | * | VERMILION | 8 | 8 |

• D5 CRACK & JOINT SEAL 2007-1

SPECIAL DETAIL FOR RAMP WORK AREAS

TYPICAL APPLICATION OF TRAFFIC CONTROL DEVICES



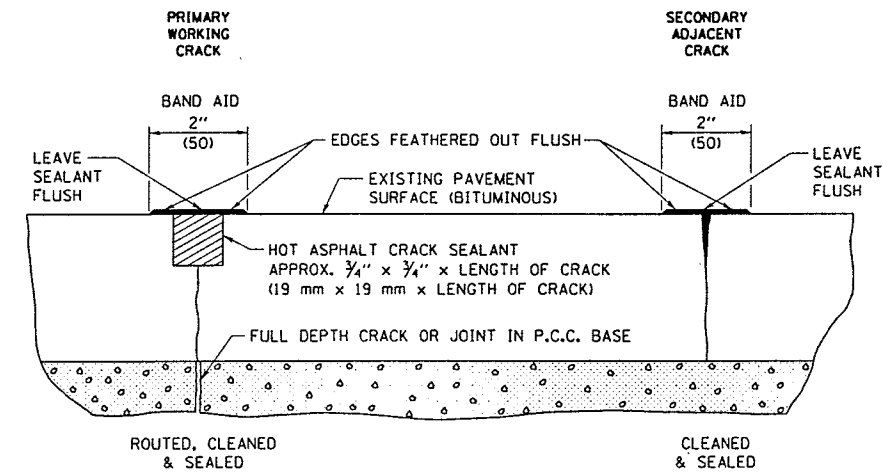
SYMBOLS

- TYPE I OR II BARRICADES OR DRUMS ■ 50' (15 m) CTS.
- * FLAGGER PLACED AS DIRECTED BY THE ENGINEER
- † SIGN ON PORTABLE OR PERMANENT SUPPORT
- ▨ WORK AREA

GENERAL NOTES

1. CONSTRUCTION OPERATIONS SHALL BE CONFINED TO AN AREA NARROW ENOUGH THAT A MINIMUM OF 10' (3 m) OF PAVEMENT SHALL BE OPEN TO TRAFFIC AT ALL TIMES.
2. CONES MAY BE SUBSTITUTED FOR BARRICADES DURING DAY OPERATIONS, AT 25' (7.5 m) SPACING.
3. FULL WIDTH PAVEMENT ON THE RAMPS SHALL BE OPEN TO TRAFFIC AT NIGHT.
4. WHEN NO WORK IS BEING PERFORMED, THE FLAGGER WILL NOT BE REQUIRED. IF THE FLAGGER IS NOT PRESENT, THE FLAGGER SIGNS SHALL BE REMOVED OR COVERED.
5. ALL SIGNS SHALL BE POST MOUNTED IF WORK IN THE AREA EXCEEDS FOUR DAYS OF DAYTIME OPERATIONS.
6. LONGITUDINAL DIMENSIONS MAY BE ADJUSTED SLIGHTLY TO FIT FIELD CONDITIONS.
7. ALL VEHICLES, EQUIPMENT, WORKERS (EXCEPT FLAGGER) AND THEIR ACTIVITIES ARE RESTRICTED AT ALL TIMES TO ONE SIDE OF THE PAVEMENT UNLESS OTHERWISE AUTHORIZED BY THE DISTRICT ENGINEER.

TYPICAL DETAILS FOR CRACK SEALING FOR HOT-MIX ASPHALT PAVEMENT



PLOT DATE = 12/6/2006
 FILE NAME = c:\p\projects\4507806 (v8)\70563plan.dgn
 PLOT SCALE = 43.2353' / IN.
 USER NAME = plier-sonbr

| | NAME | DATE | REVISIONS |
|----------|--------|------|--------------|
| DESIGNED | D.L.P. | 3-95 | NAME DATE |
| CHECKED | | | D.L.P. 08/00 |
| CADD NO. | F-5.01 | | K.A.G. 01/05 |

ALL DIMENSIONS ARE IN INCHES (MILLIMETERS) UNLESS OTHERWISE SHOWN.

| | NAME | DATE | REVISIONS |
|----------|--------|-------|--------------|
| DESIGNED | SPRG. | 04/90 | NAME DATE |
| CHECKED | J.H.M. | 05/90 | K.A.G. 04/04 |
| CADD NO. | X-2.05 | | |

ALL DIMENSIONS ARE IN INCHES (MILLIMETERS) UNLESS OTHERWISE SHOWN.