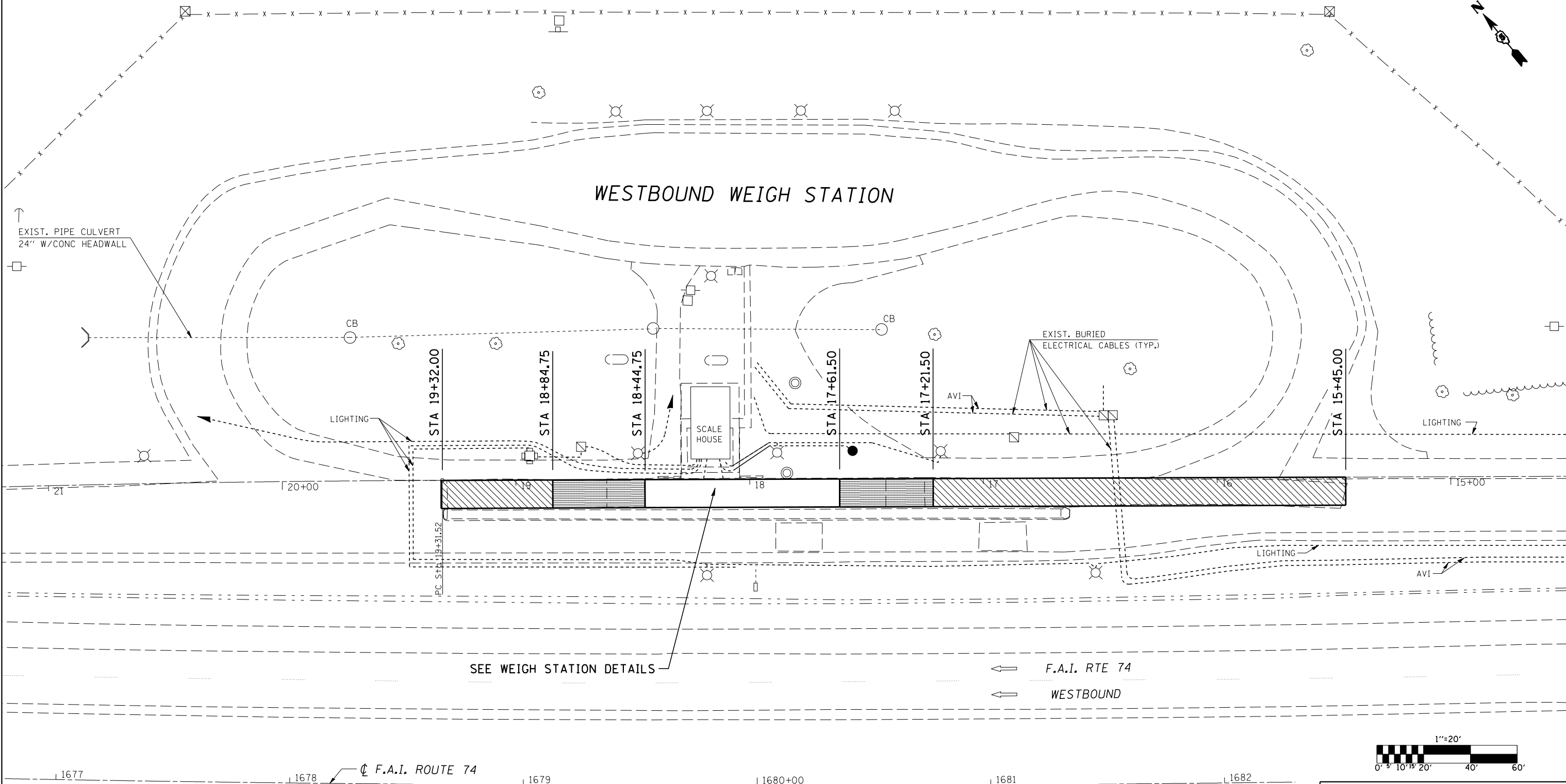


SEC 9 T24N R1E 3RD PM

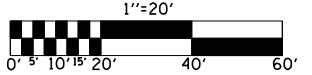
CONTRACT NO. 70569

F.A.I. RTE.	SECTION	COUNTY	TOTAL SHEETS	SHEET NO.
74	57-18WS-2	MCLEAN	26	10
STA. ±21+20 WB WS TO STA. ±14+50 WB WS				
FED. ROAD DIST. NO.	ILLINOIS	FED. AID PROJECT		



SEE WEIGH STATION DETAILS

← F.A.I. RTE 74
← WESTBOUND



NOTE:
SEE ALIGNMENT SHEET FOR LAYOUT.

LEGEND	
	PAVEMENT REMOVAL
	APPROACH SLAB REMOVAL

NOTE:
SEE SHEET 21 OF 26 FOR DETAIL.

ILLINOIS DEPARTMENT OF TRANSPORTATION
REMOVAL DETAILS
 F.A.I. ROUTE 74
 SECTION 57-18WS-2
 MCLEAN COUNTY

SCALE: 1" = 20'
 DATE: 08/21/06

DRAWN BY: CADD
 CHECKED BY:

PLOT DATE = 12/7/2006
 FILE NAME = c:\projects\70569\sheet10.dgn
 PLOT SCALE = 42.3525 / IN.
 USER NAME = phillipsj