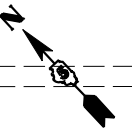
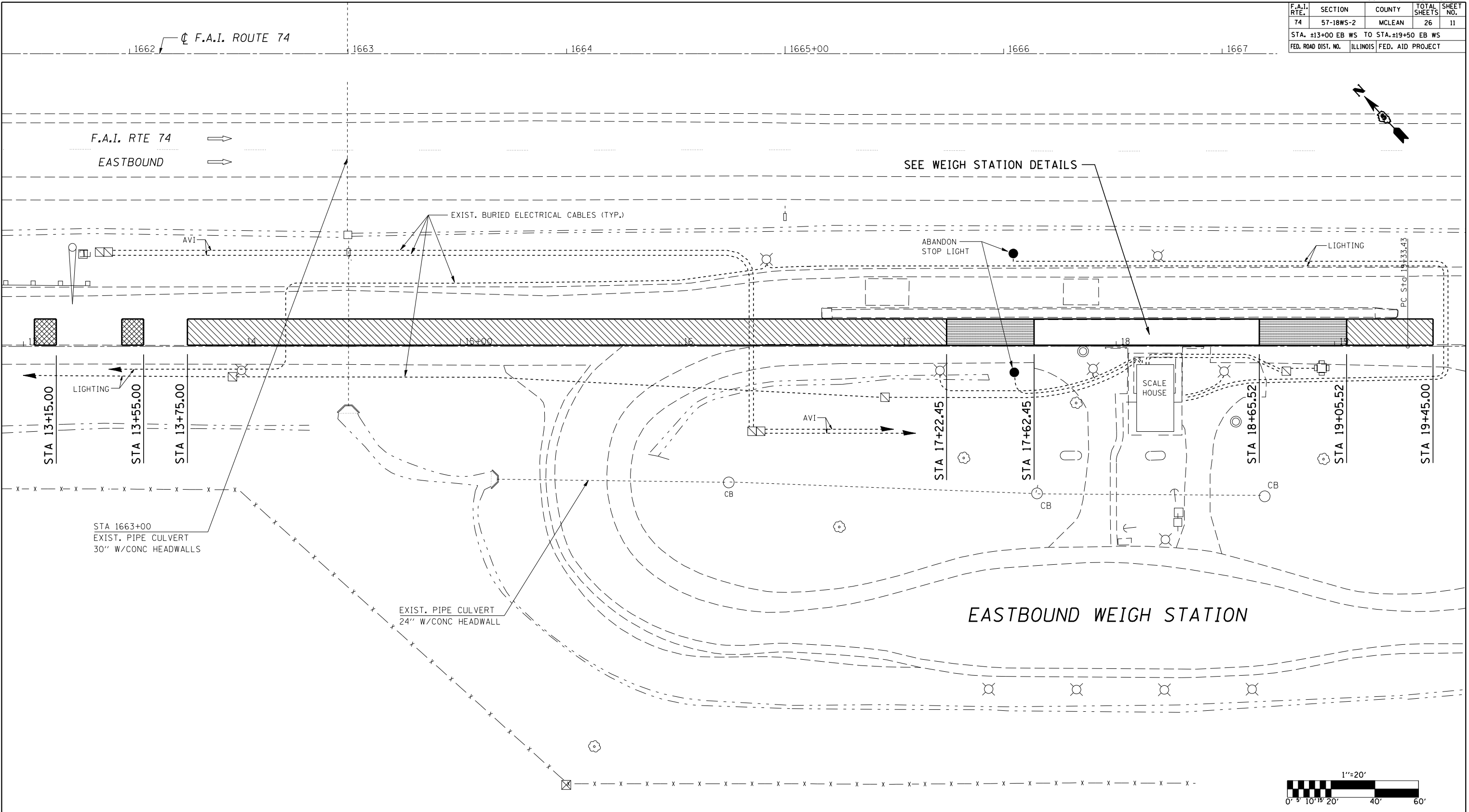


F.A.I. RTE.	SECTION	COUNTY	TOTAL SHEETS	SHEET NO.
74	57-18WS-2	MCLEAN	26	11
STA. ±13+00 EB WS TO STA. ±19+50 EB WS				
FED. ROAD DIST. NO.	ILLINOIS	FED. AID PROJECT		



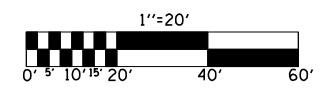
SEE WEIGH STATION DETAILS

EASTBOUND WEIGH STATION

NOTE:
SEE ALIGNMENT SHEET FOR LAYOUT.

LEGEND	
	CLASS B PATCH
	PAVEMENT REMOVAL
	APPROACH SLAB REMOVAL

NOTE:
SEE SHEET 21 OF 26 FOR DETAIL.



ILLINOIS DEPARTMENT OF TRANSPORTATION
REMOVAL DETAILS
 F.A.I. ROUTE 74
 SECTION 57-18WS-2
 MCLEAN COUNTY

SCALE: 1" = 20'
 DATE: 08/21/06

DRAWN BY: CADD
 CHECKED BY:

PLOT DATE = 12/7/2006
 FILE NAME = c:\projects\5718\70569\sheets.dgn
 PLOT SCALE = 42.3525 / IN.
 USER NAME = phillipsj