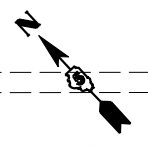
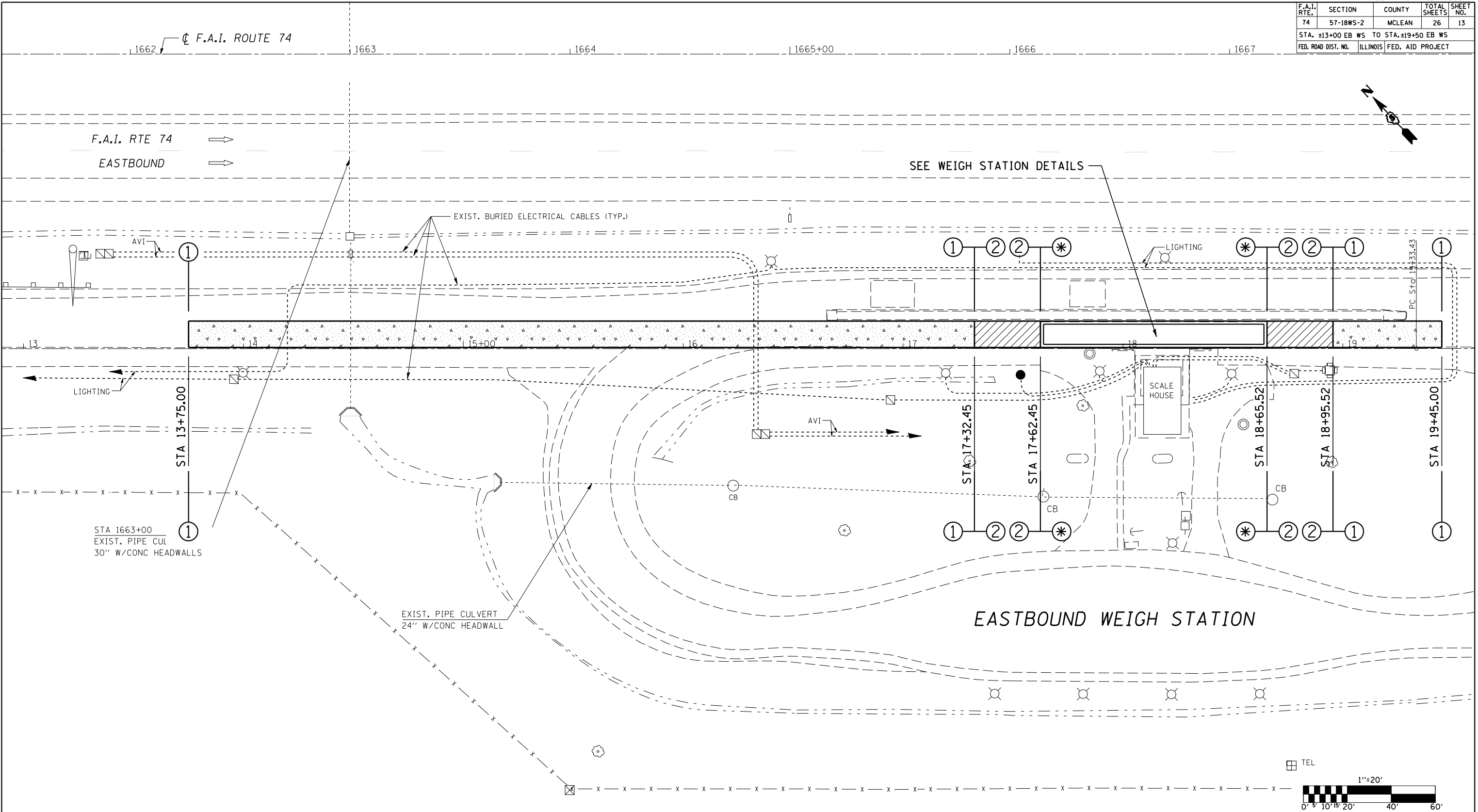


F.A.I. RTE.	SECTION	COUNTY	TOTAL SHEETS	SHEET NO.
74	57-18WS-2	MCLEAN	26	13
STA. ±13+00 EB WS TO STA. ±19+50 EB WS				
FED. ROAD DIST. NO. ILLINOIS FED. AID PROJECT				



SEE WEIGH STATION DETAILS

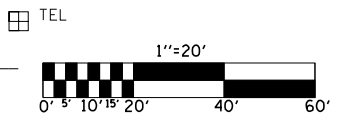
EASTBOUND WEIGH STATION

STA 1663+00  
EXIST. PIPE CUL  
30\" W/CONC HEADWALLS

EXIST. PIPE CULVERT  
24\" W/CONC HEADWALL

⊛ SEE SCALE PLANS

LEGEND	
	PORTLAND CEMENT CONCRETE PAVEMENT 10\" (JOINTED)
	BRIDGE APPROACH PAVEMENT (SPECIAL)



NOTE:  
SEE ALIGNMENT SHEET FOR LAYOUT.

SEC 9 T24N R1E 3RD PM

ILLINOIS DEPARTMENT OF TRANSPORTATION  
**PLAN VIEW**  
 F.A.I. ROUTE 74  
 SECTION 57-18WS-2  
 MCLEAN COUNTY

SCALE: 1" = 20'  
 DATE: 08/21/06

DRAWN BY: CADD  
 CHECKED BY:

PLOT DATE = 12/7/2006  
 FILE NAME = c:\projects\70569\70569sheets.dgn  
 PLOT SCALE = 42.3525 / IN.  
 USER NAME = phillipsj