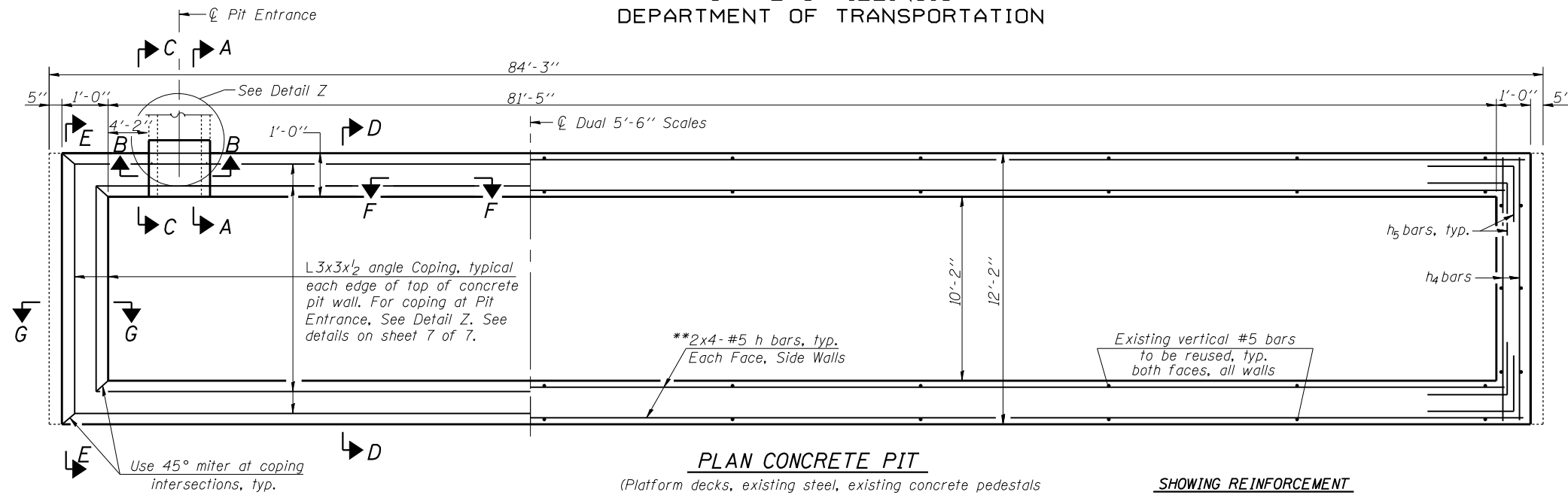


STATE OF ILLINOIS
DEPARTMENT OF TRANSPORTATION

ROUTE NO.	SECTION	COUNTY	TOTAL SHEETS	SHEET NO.	SHEET NO. 6
F.A.I. 74	57-18 WS-2	McLean	26	19	7 SHEETS
FED. ROAD DIST. NO. 7	ILLINOIS	FED. AID PROJECT			

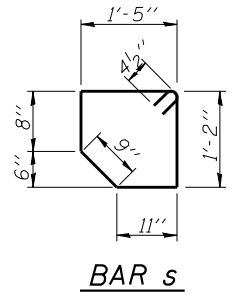
Contract #70569



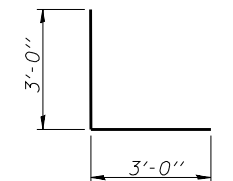
SHOWING ANGLE COPING

PLAN CONCRETE PIT
(Platform decks, existing steel, existing concrete pedestals and approach slab not shown) (W.B. shown & E.B. similar)

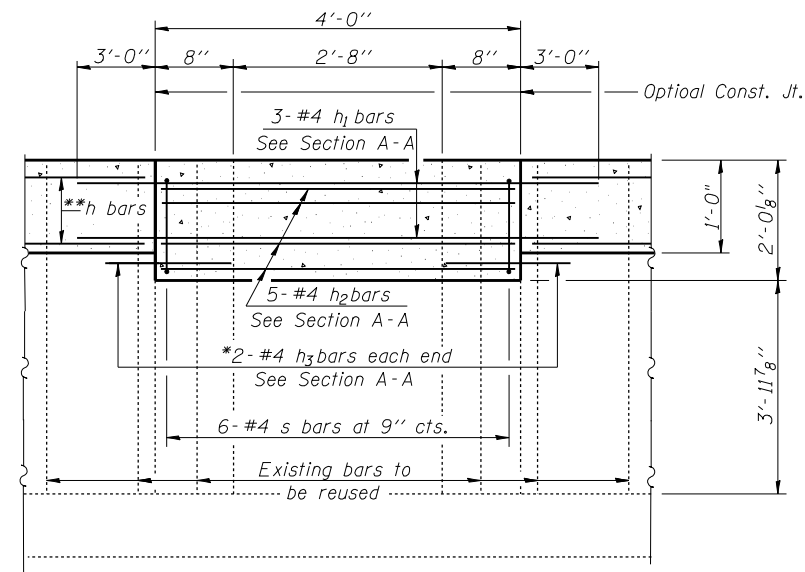
SHOWING REINFORCEMENT



BAR s



BAR h5



SECTION B-B
(Coping angles not shown)

MIN. BAR LAP
#5 Bar = 3'-0"

BILL OF MATERIAL
FOR BOTH W.B. & E.B.

Bar	No.	Size	Length	Shape
h	64	#5	23'-0"	—
h1	6	#4	10'-0"	—
h2	10	#4	3'-9"	—
h3	8	#4	2'-5"	—
h4	16	#5	11'-10"	—
h5	32	#5	6'-0"	L
s	12	#4	5'-8"	□

Reinforcement Bars	Pound	2060
Conc. Structures	Cu. Yd.	15.4

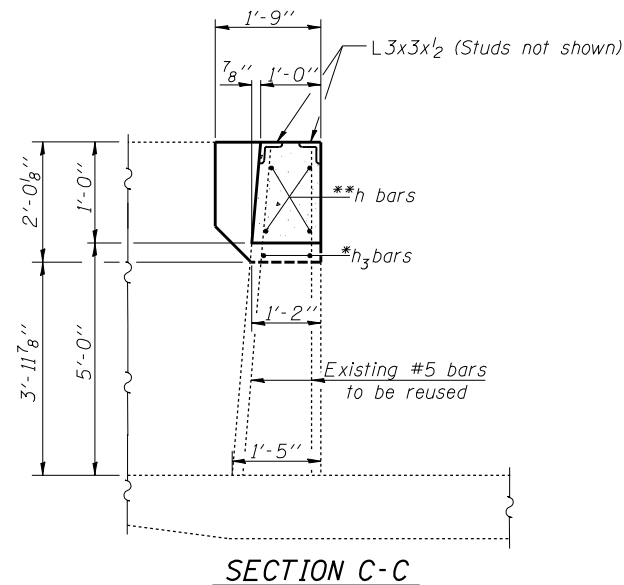
Bars indicated thus 2x4-#5 etc. indicates 2 lines of bars with 4 lengths per line.

Notes: See sheet 7 of 7 for Sections A-A, D-D, E-E, F-F and G-G.

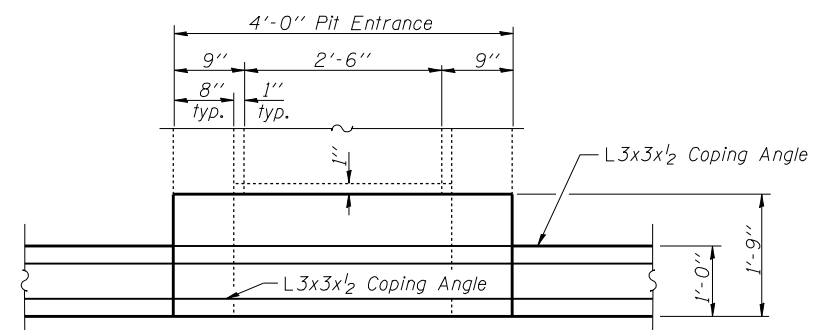
Existing reinforcement extending into removed areas shall be cleaned, straightened and incorporated into the new construction. Cost included with Concrete Removal.

*Epoxy grout h3 bars in 9" min. drilled holes according to Section 584 of the Standard Specifications.

**Cut h bar reinforcement in the wall at pit entrance. See Section B-B.



SECTION C-C



DETAIL Z-PLAN VIEW
AT PIT ENTRANCE

(Reinforcement and entire existing manhole frame not shown)

DESIGNED	Stephen M. Ryan
CHECKED	Fesseha Teklehaimanot
DRAWN	R. Sommer
CHECKED	SMR/FT

EXAMINED	January 18, 2007	Thomas J. Domagalaki
PASSED		Ralph E. Anderson

CONCRETE PIT DETAILS
CARLOCK WEIGH STATIONS
F.A.I. ROUTE 74 SECT. 57-18WS-2
MCLEAN COUNTY
STA. 1680+00.00 (WB) &
STA. 1666+50.00 (EB)