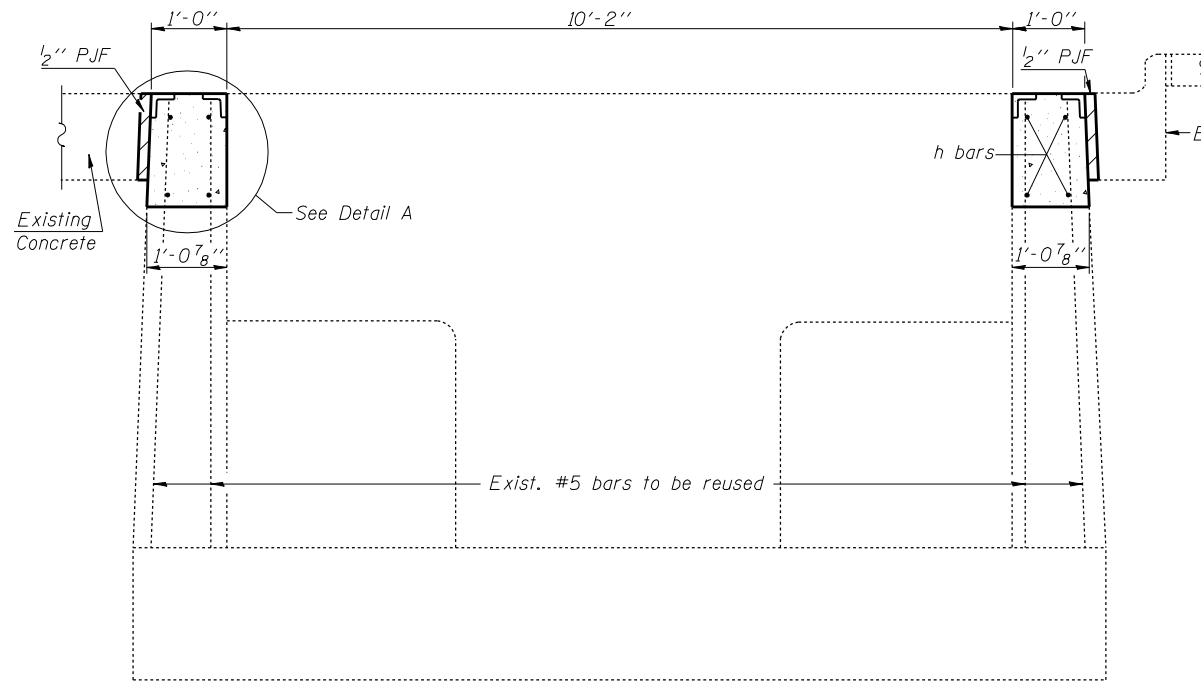


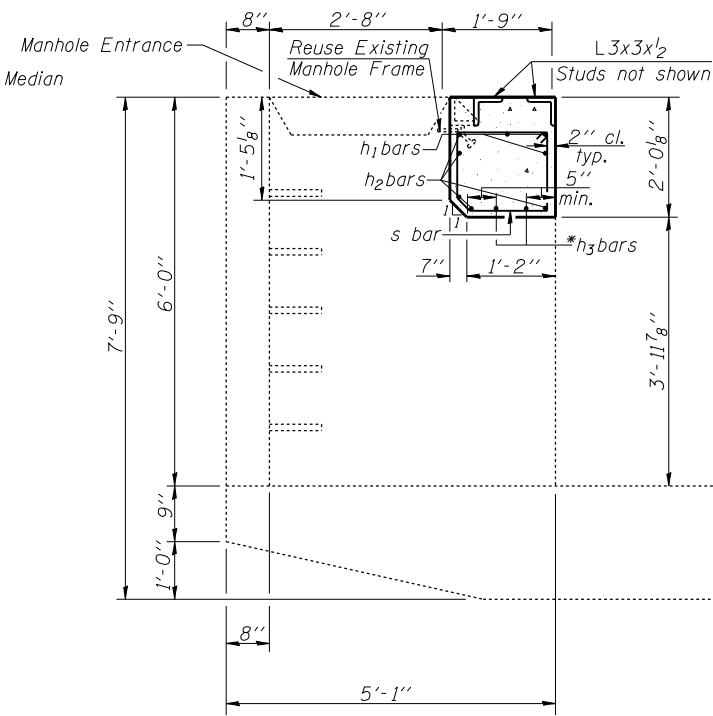
STATE OF ILLINOIS  
DEPARTMENT OF TRANSPORTATION

ROUTE NO.	SECTION	COUNTY	TOTAL SHEETS	SHEET NO.	SHEET NO.
F.A.I. 74	57-18 WS-2	McLean	26	20	7 SHEETS
FED. ROAD DIST. NO. 7	ILLINOIS	FED. AID PROJECT			

Contract #70569

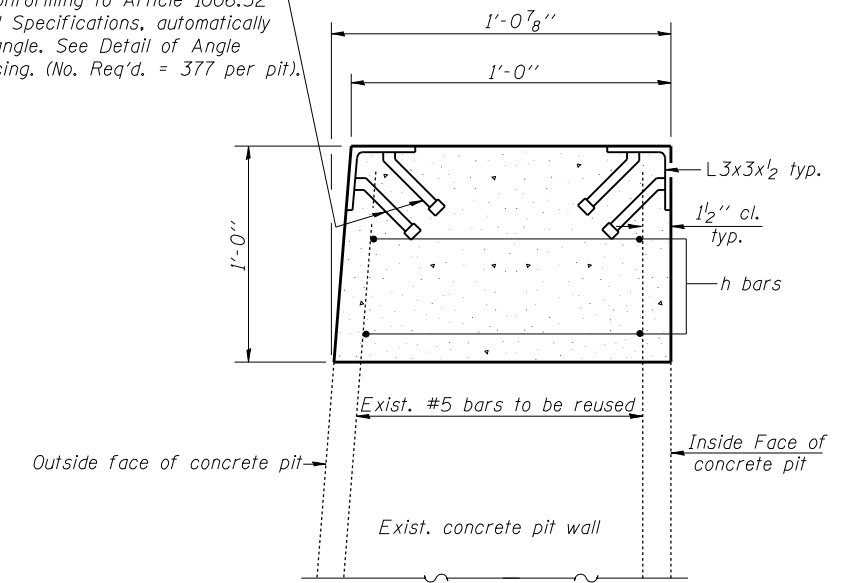


**SECTION D-D**  
(Thru Sidewalls)



**SECTION A-A**

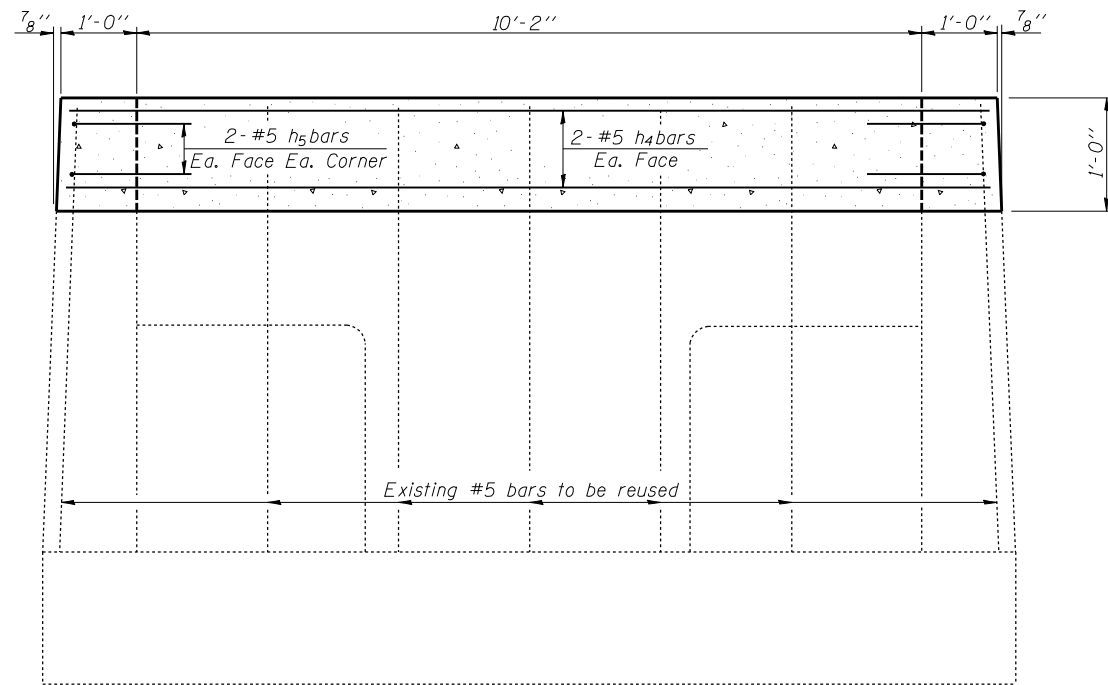
3/4"  $\phi$  x 6" Granular or solid flux filled headed studs conforming to Article 1006.32 of the Standard Specifications, automatically end welded to angle. See Detail of Angle Coping for spacing. (No. Req'd. = 377 per pit).



**DETAIL A**

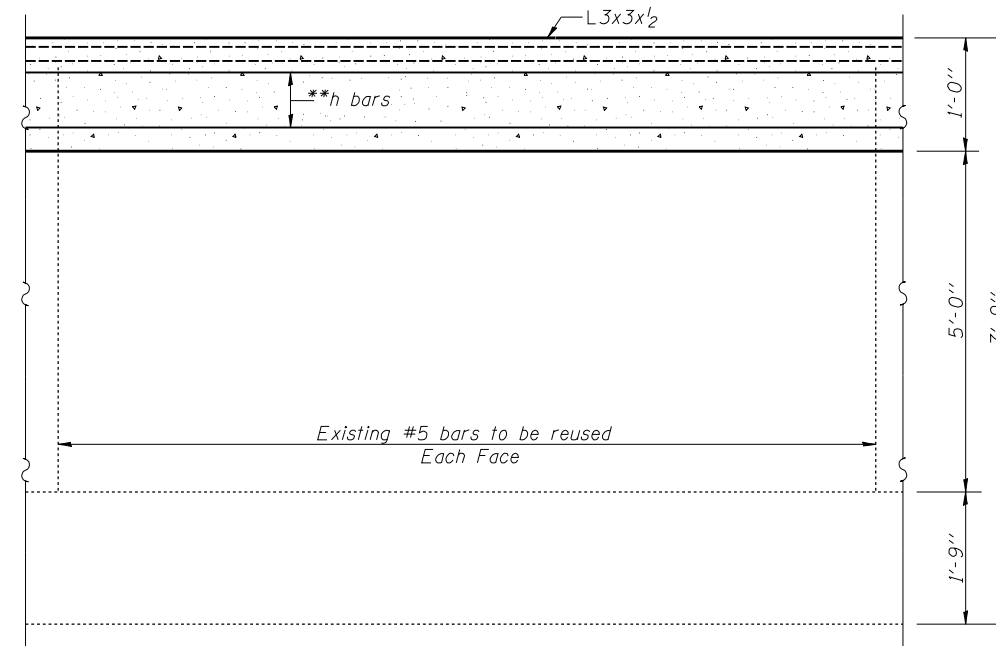
(Side walls shown, End walls similar.)

After welding, angles and studs shall be galvanized according to AASHTO M111. No field painting required. Angle coping and studs paid for as Furnishing and Erecting Structural Steel. (376'-4" length of Angle Coping required per pit).



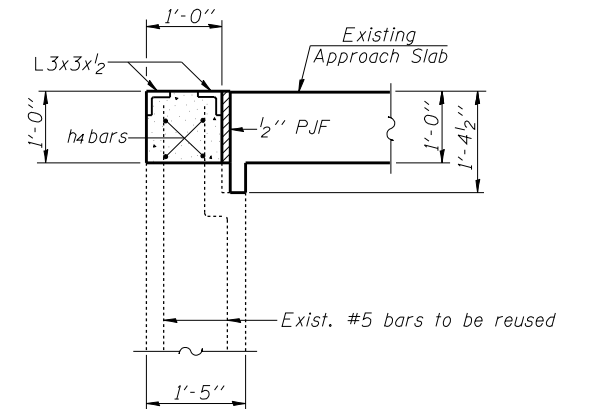
**SECTION E-E**

(Thru Endwalls)  
(Existing concrete outside pit not shown)  
(Coping angle L3x3x1/2 and approach slab not shown)



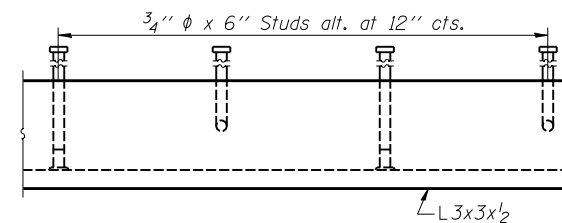
**SECTION F-F**

(Thru Sidewalls)



**SECTION G-G**

Showing Approach Slab, Concrete Pit and Coping angles. Concrete Deck, Scale Components, Structural Steel and studs not shown.



**DETAIL OF ANGLE COPING**

\*Epoxy grout h3 bars in 9" min. drilled holes according to Section 584 of the Standard Specifications.  
\*\*Cut h bar reinforcement in the wall at pit entrance.

DESIGNED	Stephen M. Ryan
CHECKED	Fesseha Teklehaimanot
DRAWN	R. Sommer
CHECKED	SMR/FT

EXAMINED	January 18, 2007	Thomas J. Domagala
PASSED		Ralph E. Anderson

**CONCRETE PIT DETAILS**  
**CARLOCK WEIGH STATIONS**  
**F.A.I. ROUTE 74 SECT. 57-18WS-2**  
**MCLEAN COUNTY**  
**STA. 1680+00.00 (WB) &**  
**STA. 1666+50.00 (EB)**