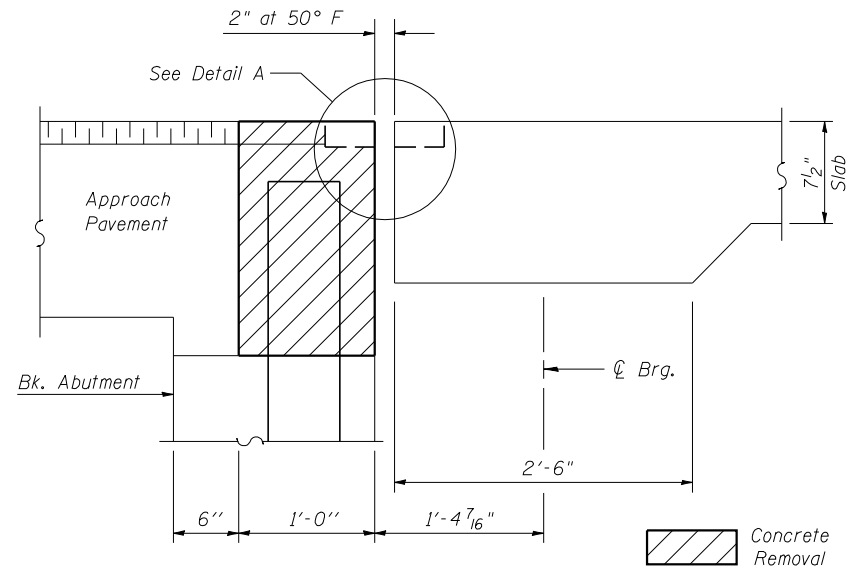


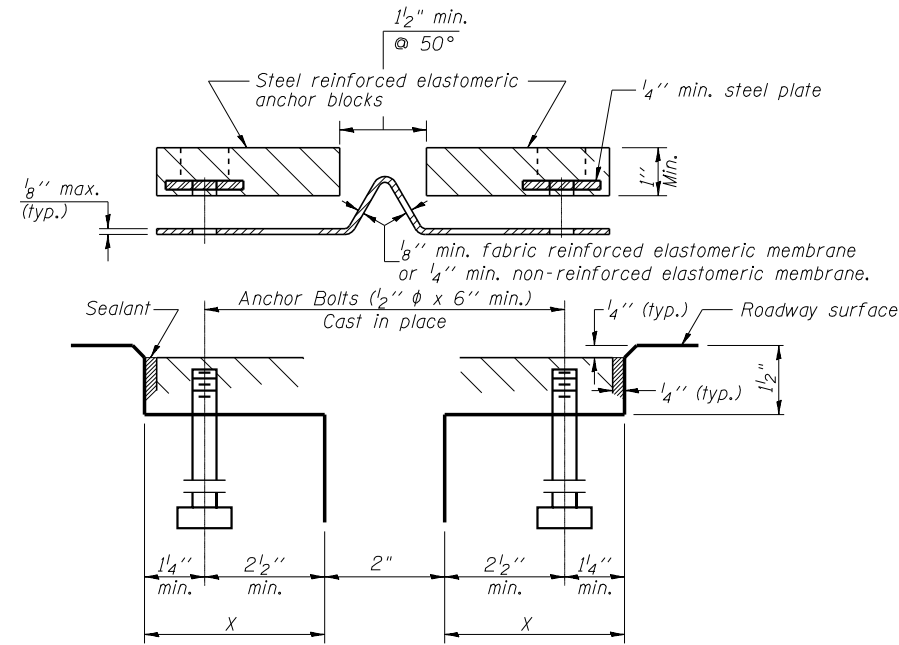
F.A.P. RTE.	SECTION	COUNTY	TOTAL SHEETS	SHEET NO.
322	*	DEWITT	35	11
STA.		TO STA.		
FED. ROAD DIST. NO.	ILLINOIS	FED. AID PROJECT		
* (52BR-1 & 53R-B)BJR				

JOINT REPAIR AT SOUTH ABUTMENT

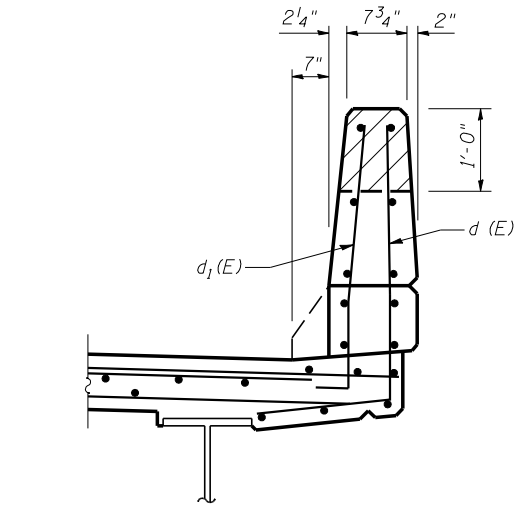
S.N. 020-0050



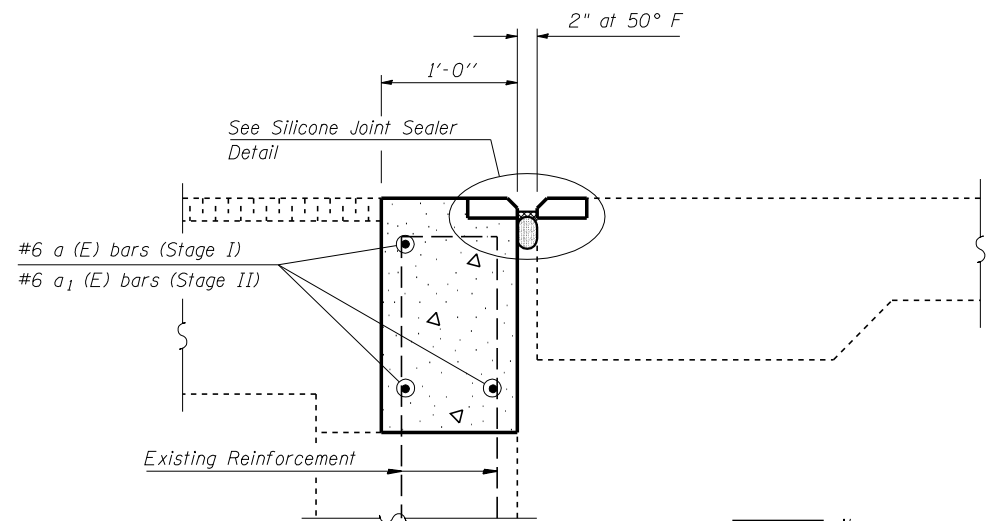
EXISTING SECTION AT SOUTH ABUTMENT



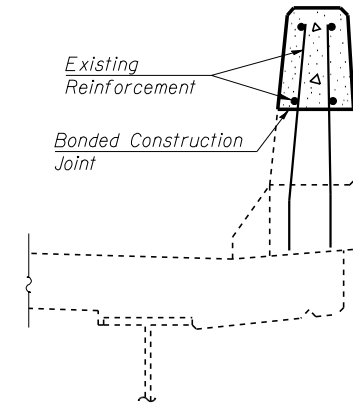
CROSS SECTION DETAIL A EXISTING JOINT



EXISTING SECTION THRU DAMAGED PARAPET



PROPOSED SECTION AT SOUTH ABUTMENT



PROPOSED SECTION THRU DAMAGED PARAPET

Note:
Existing reinforcement extending into removal area shall be cleaned, straightened and incorporated into new construction. Any reinforcement bars damaged during concrete removal shall be replaced with an approved bar splicer or anchorage system. Cost included with Concrete Removal.

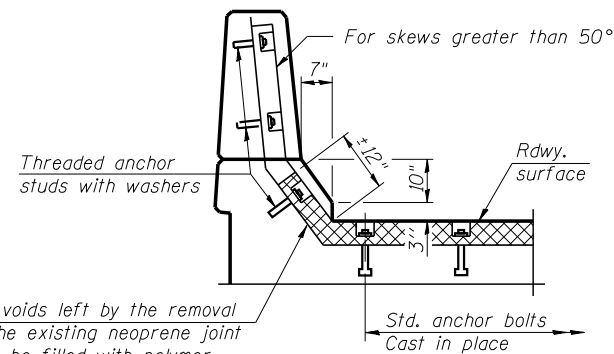
BILL OF MATERIALS

Item	Unit	Total
Concrete Removal	Cu. Yd.	2.4
Concrete Superstructure	Cu. Yd.	2.4
Reinforcement Bars, Epoxy Coated	Pound	200
Bar Splicers	Each	3
Polymer Concrete	Cu. Ft.	3.6
Silicone Joint Sealer, 2"	Foot	48.3

Notes:

Remove existing neoprene expansion joint leaving existing anchor bolts on the bridge deck portion, replace with Silicone Joint Sealer and Polymer Concrete.

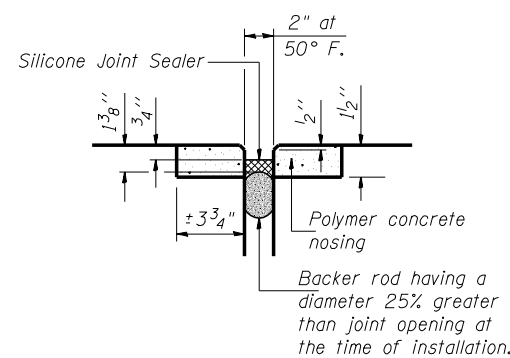
Removal of the existing anchor blocks and neoprene membrane is included in the cost of Polymer Concrete.



EXISTING NEOPRENE JOINT AT PARAPET

Any voids left by the removal of the existing neoprene joint shall be filled with polymer concrete.

Note:
For proposed end of seal treatment at abutment, see sheet 8 of 8.



SILICONE JOINT SEALER DETAIL

ILLINOIS DEPARTMENT OF TRANSPORTATION
JOINT REPAIR AT SOUTH ABUTMENT
F.A.P. ROUTE 322
SECTION (52BR-1 & 53R-B)BJR
DEWITT COUNTY
S.N. 020-0050

SCALE: NA DRAWN BY: JRP
DATE: 11/06/06 CHECKED BY: