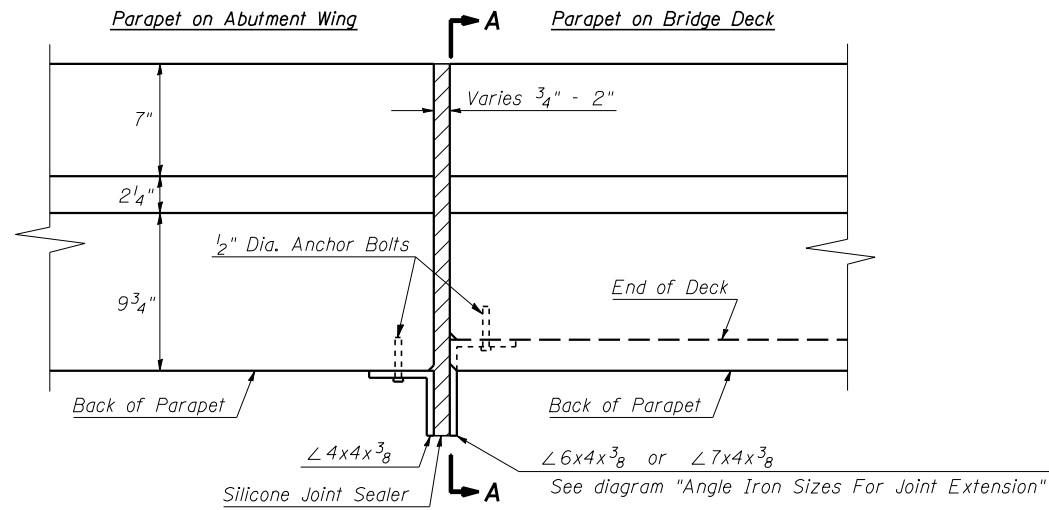


F.A.P. RTE.	SECTION	COUNTY	TOTAL SHEETS	SHEET NO.
322	*	DEWITT	35	34
STA.		TO STA.		
FED. ROAD DIST. NO.	ILLINOIS	FED. AID PROJECT		

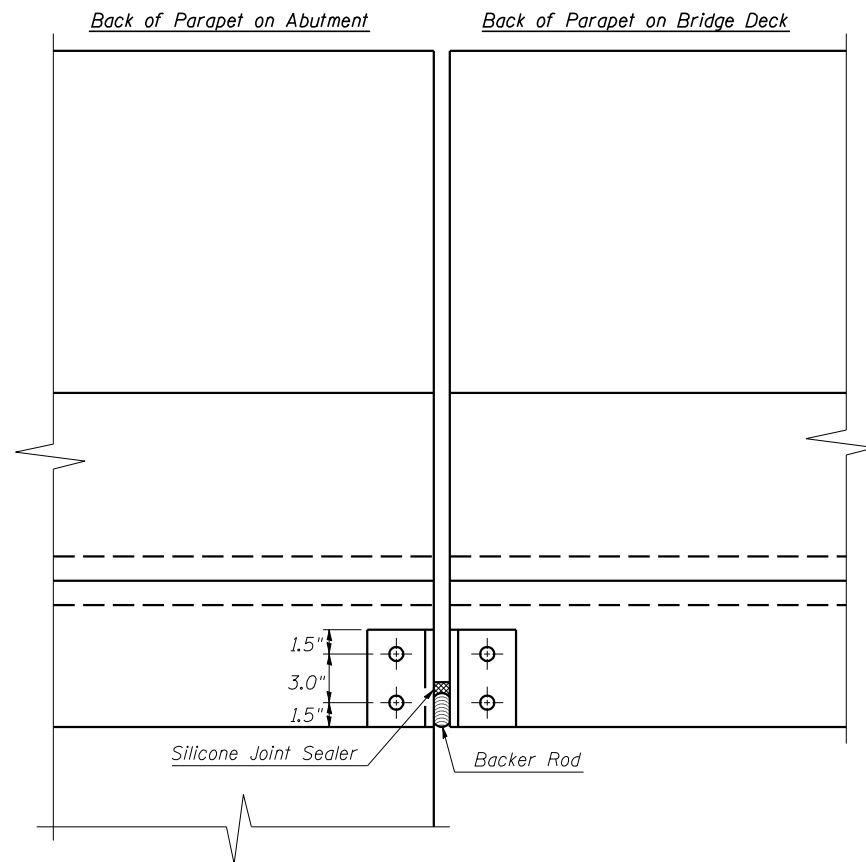
* (52BR-1 & 53R-B)BJR

SHEET 8 OF 8

JOINT EXTENSION DETAILS



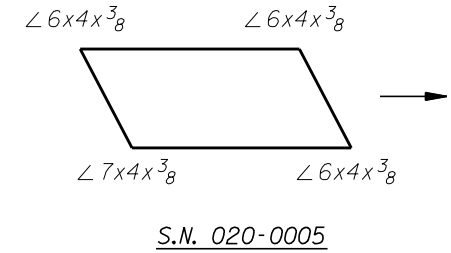
TOP VIEW
TOP OF PARAPETS AT JOINT



SIDE VIEW
BACK OF PARAPET AT JOINT

ANGLE IRON SIZES FOR JOINT EXTENSION

- Angle Iron sizes shown in diagram is for attachment to Bridge Deck.
- Angle Iron sizes for attachment to the Abutment Wing will be $\angle 4 \times 4 \times 3/8$ in all cases.



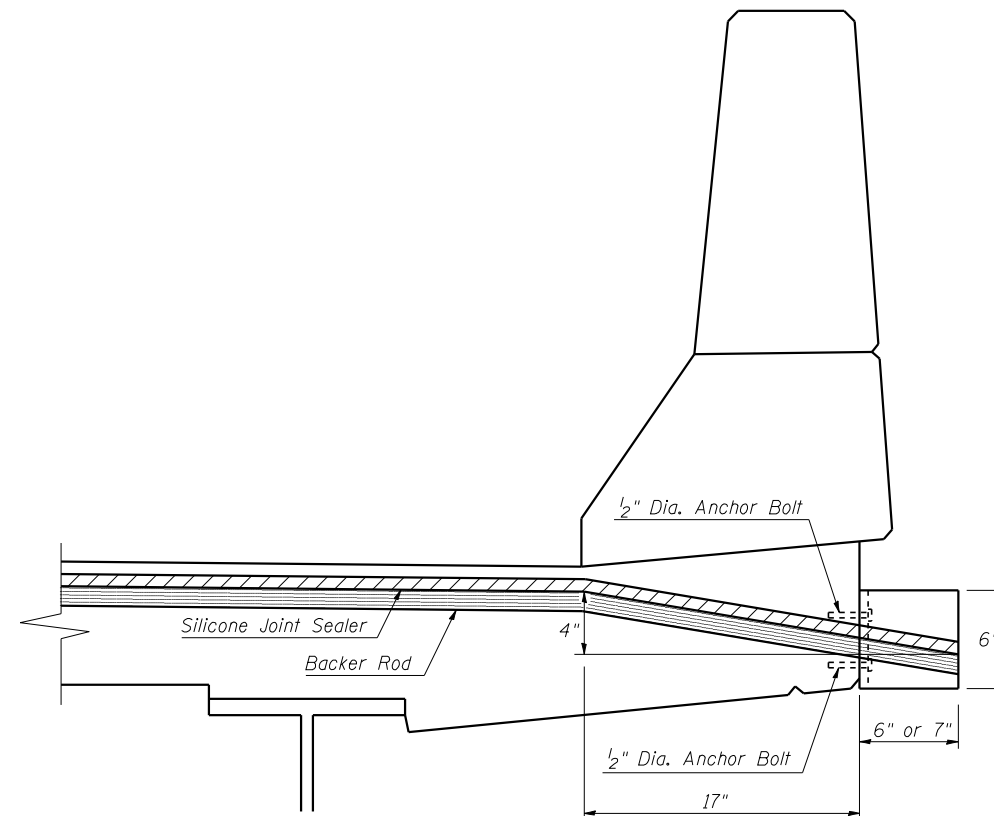
LIST OF MATERIALS

$\angle 4 \times 4 \times 3/8$ - Stainless Steel Angle Iron - 4 ea @ 6" = 2.0 Feet
$\angle 6 \times 4 \times 3/8$ - Stainless Steel Angle Iron - 3 ea @ 6" = 1.5 Feet
$\angle 7 \times 4 \times 3/8$ - Stainless Steel Angle Iron - 1 ea @ 6" = 0.5 Feet
1/2 Inch Anchor Bolts - Stainless Steel = 16 Each

The Stainless Steel Angle Iron and Anchor Bolts, furnished and installed shall not be paid for separately but shall be included in the unit bid price for Silicone Joint Sealer, 2".

GENERAL NOTES

1. Anchor Bolts shall be Stainless Steel Grade 5 or higher.
2. All sections of Angle Iron shall be Stainless Steel.
3. Stainless Steel Angle Iron shall be attached to the back side of the Abutment Wing and Bridge Deck as shown in the detail and to the satisfaction of the engineer PRIOR to the placement of Backer Rod and Silicone Joint Sealer.
4. The concrete at locations which the Stainless Steel Angle Iron is to be attached shall be generally flat and free of rough or high spots. Light grinding with a concrete grinding wheel may be required at a few locations to ensure a smooth/flat surface.
5. Drainage by others.



SECTION A-A THRU PARAPET

ILLINOIS DEPARTMENT OF TRANSPORTATION
JOINT EXTENSION DETAILS

F.A.P. ROUTE 322
SECTION (52BR-1 & 53R-B)BJR
DEWITT COUNTY
S.N. 020-0005

SCALE: NA
DATE: 11/09/06

DRAWN BY: JRP
CHECKED BY: