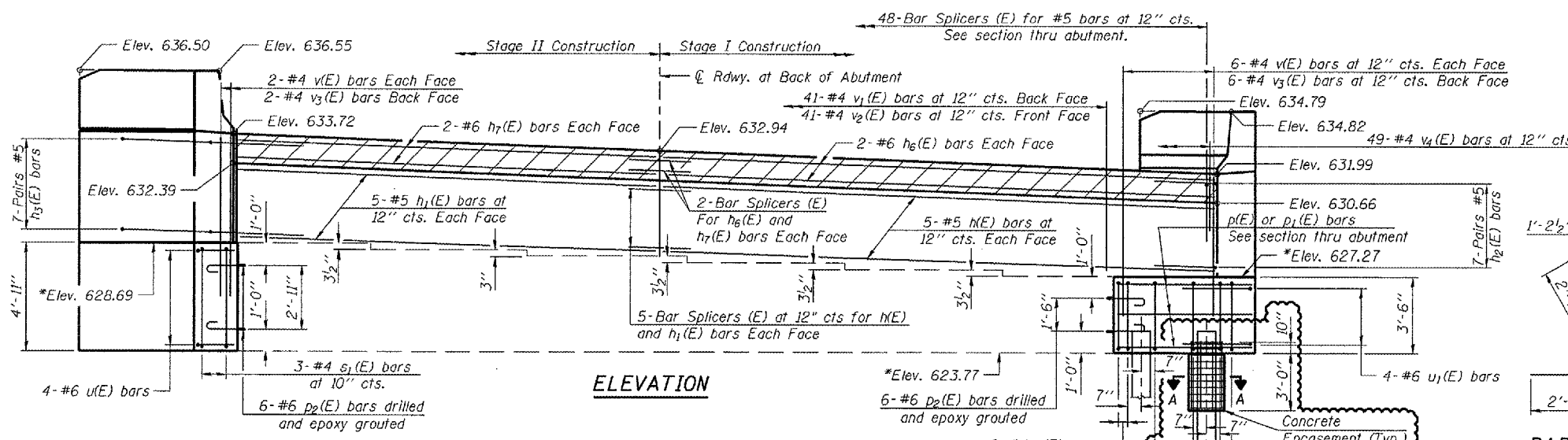


(84-9-4)A, H.B.K. BY, BY-1 Contract No 72541

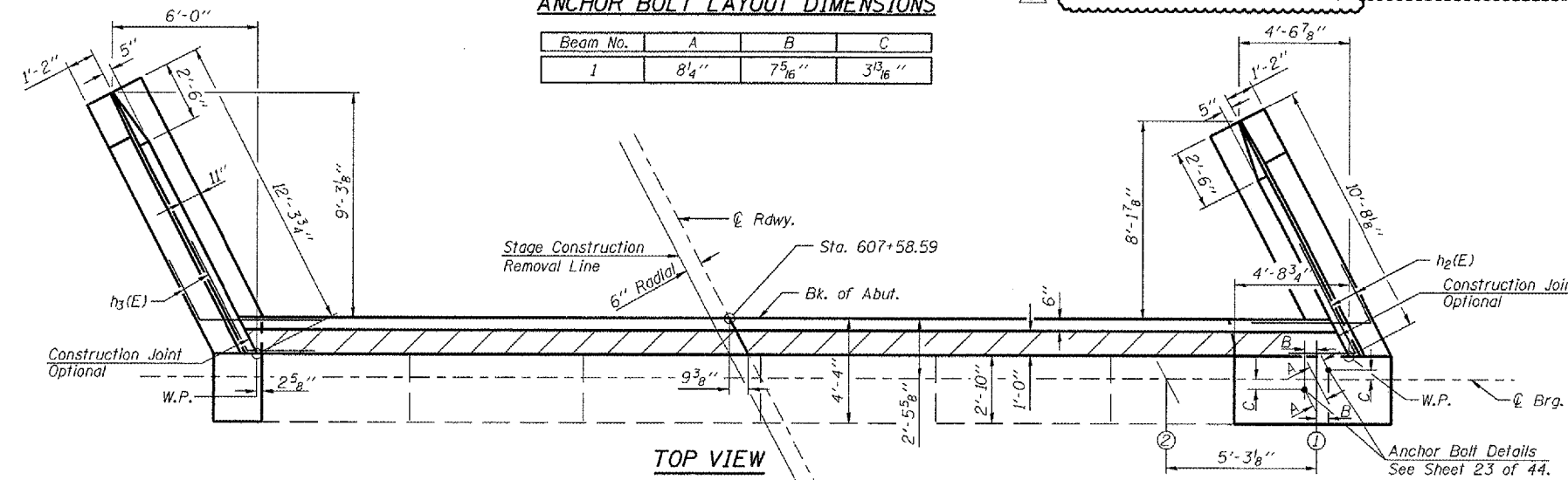
* Elevations given are from existing plans, and have been adjusted by deducting 0.69'. The comparison data is based on a survey of the existing bearing seats, and is subject to normal construction tolerance variations.



ELEVATION

ANCHOR BOLT LAYOUT DIMENSIONS

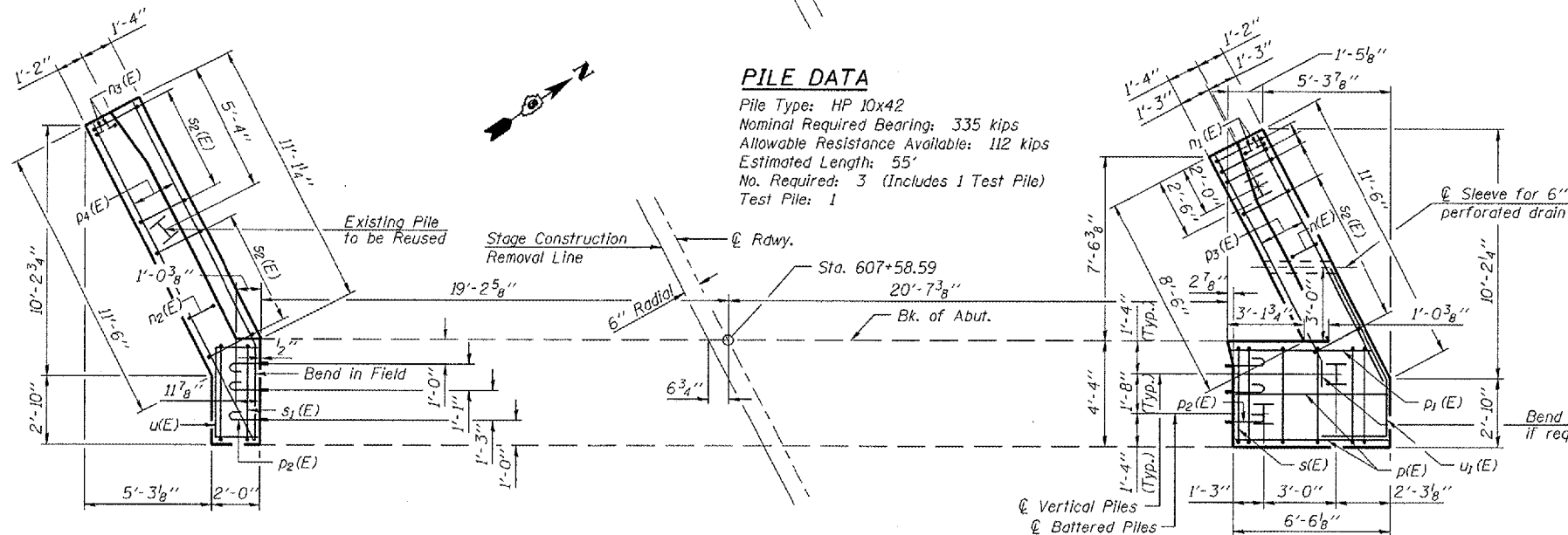
Beam No.	A	B	C
1	8 ¹ / ₄ "	7 ⁵ / ₁₆ "	3 ¹³ / ₁₆ "



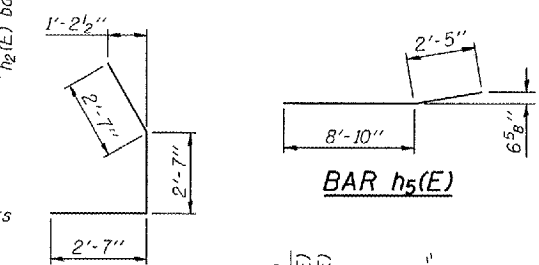
TOP VIEW

PILE DATA

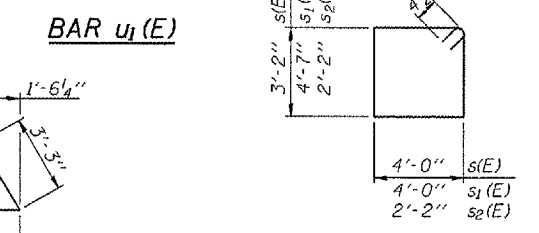
Pile Type: HP 10x42
 Nominal Required Bearing: 335 kips
 Allowable Resistance Available: 112 kips
 Estimated Length: 55'
 No. Required: 3 (Includes 1 Test Pile)
 Test Pile: 1



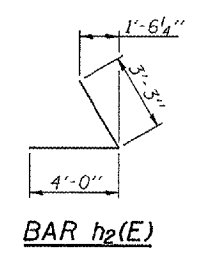
PLAN-PILE CAP



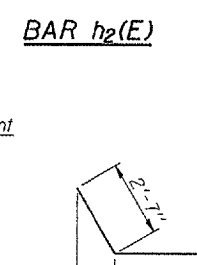
BAR h5(E)



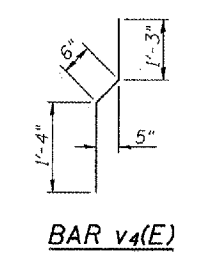
BARS s(E), s1(E) & s2(E)



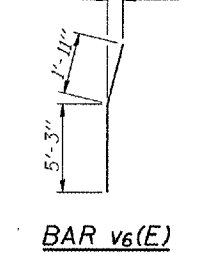
BAR u1(E)



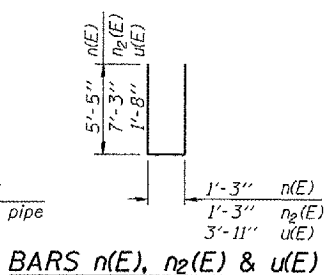
BAR h2(E)



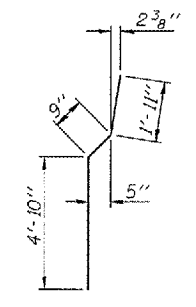
BAR v4(E)



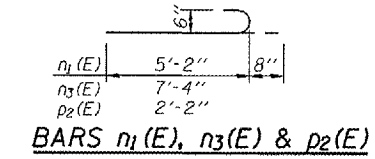
BAR v6(E)



BARS n(E), n2(E) & u(E)



BAR v7(E)



BARS n1(E), n3(E) & p2(E)

MIN. BAR LAPS

- #4 Bar - 1'-8"
- #5 Bar - 2'-2"
- #6 Bar - 2'-7"
- #7 Bar - 3'-5"

BILL OF MATERIAL

Bar No.	Size	Length	Shape
n(E)	#5	24'-6"	
h1(E)	#5	19'-10"	
h2(E)	#5	7'-3"	
h3(E)	#5	7'-3"	
h4(E)	#4	11'-3"	
h5(E)	#4	11'-3"	
h6(E)	#6	24'-6"	
h7(E)	#6	19'-10"	
n(E)	#6	12'-1"	
n1(E)	#6	5'-10"	
n2(E)	#6	15'-9"	
n3(E)	#6	8'-0"	
p(E)	#7	6'-2"	
p1(E)	#7	5'-8"	
p2(E)	#6	2'-10"	
p3(E)	#7	11'-6"	
p4(E)	#7	14'-6"	
s(E)	#4	15'-1"	
s1(E)	#4	17'-11"	
s2(E)	#4	9'-5"	
u(E)	#6	7'-3"	
u1(E)	#6	7'-9"	
v(E)	#4	6'-0"	
v1(E)	#4	3'-7"	
v2(E)	#4	3'-2"	
v3(E)	#4	3'-5"	
v4(E)	#4	3'-1"	
v5(E)	#6	7'-2"	
v6(E)	#6	7'-2"	
v7(E)	#6	7'-6"	
Structure Excavation	Cu. Yd.	91	
Concrete Structures	Cu. Yd.	29.8	
Reinforcement Bars Epoxy Coated	Pound	3560	
Furnishing Steel Piles HP10x42	Lin. Ft.	110	
Driving Piles	Lin. Ft.	110	
Test Piles Steel HP10x42	Each	1	
Concrete Encasement	Cu. Yd.	1.1	

Reinforcement Bars designated (E) shall be Epoxy Coated.
 For details of Bar Splicers, see sheet 40 of 44.
 Bars epoxy grouted shall have an embedment sufficient to obtain 1.25 x the yield strength of the reinforcing bar.
 Drill holes for epoxy grouted bars to miss existing reinforcement.

Corporate License Number 184-001-084

WESTBOUND-WEST ABUTMENT
 F.A.I. 72 OVER UNION PACIFIC RAILROAD
 SECTION (84-9-4)A, H.B.K. BY, BY-1
 SANGAMON COUNTY
 STATION 608+51.98
 STR NO. 084-0074 EB - 084-0075 WB

© Copyright Hanson Professional Services Inc. SMS_YEARS

96S2002B
 DATE: 01/12/06

LAYOUT	MM	06/27/03
DRAWN	DAP	07/17/03
REVIEWED	JMM	10/27/03