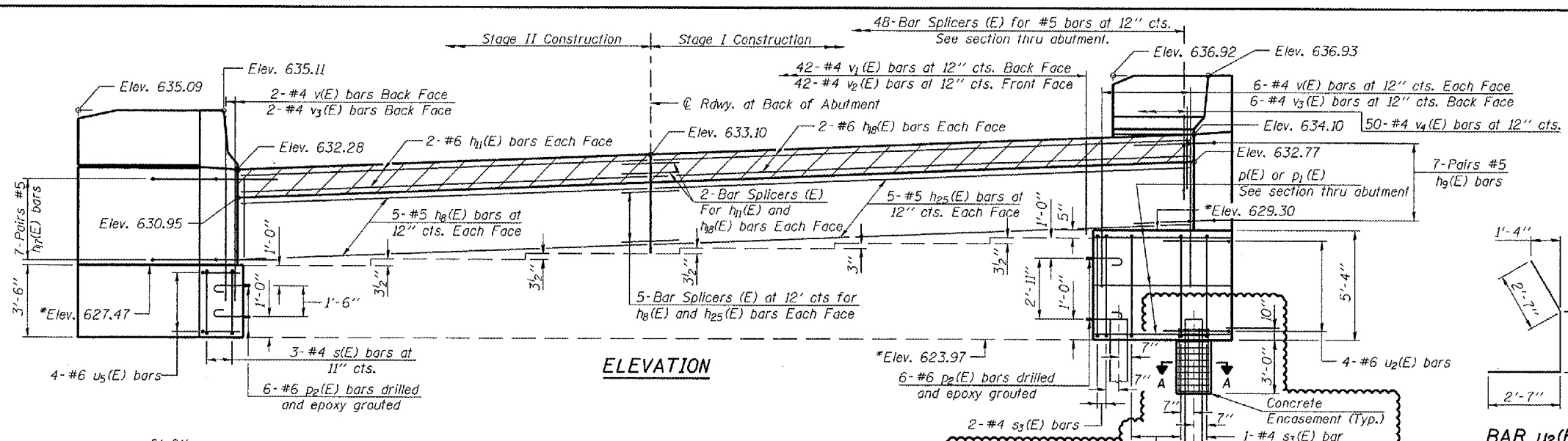
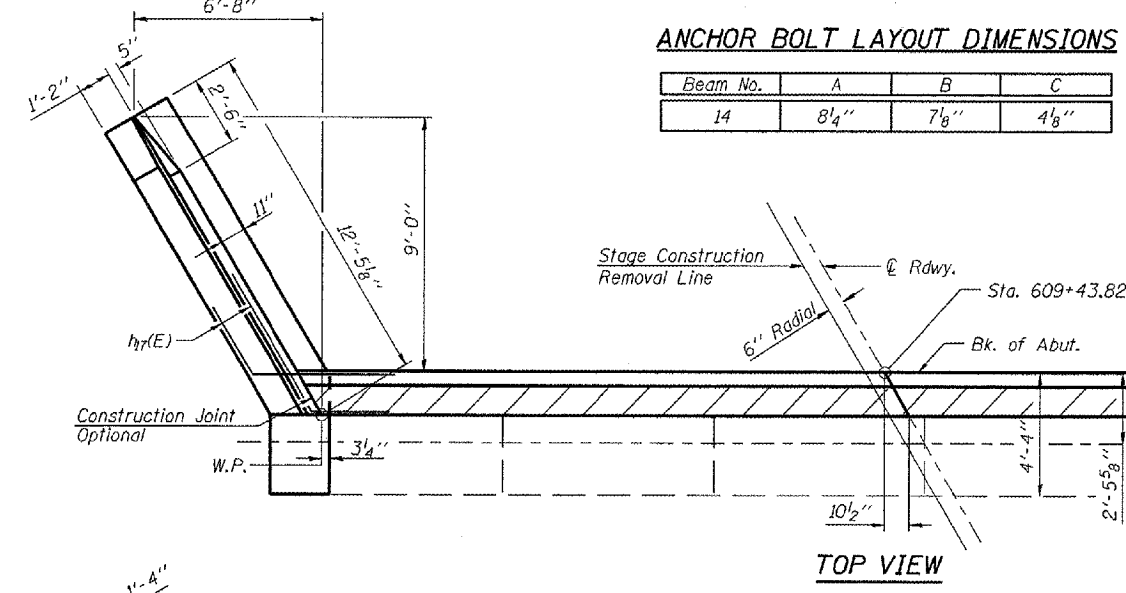


* (84-9-4)A, HBK, BY, BY-1 Contract No. 72541

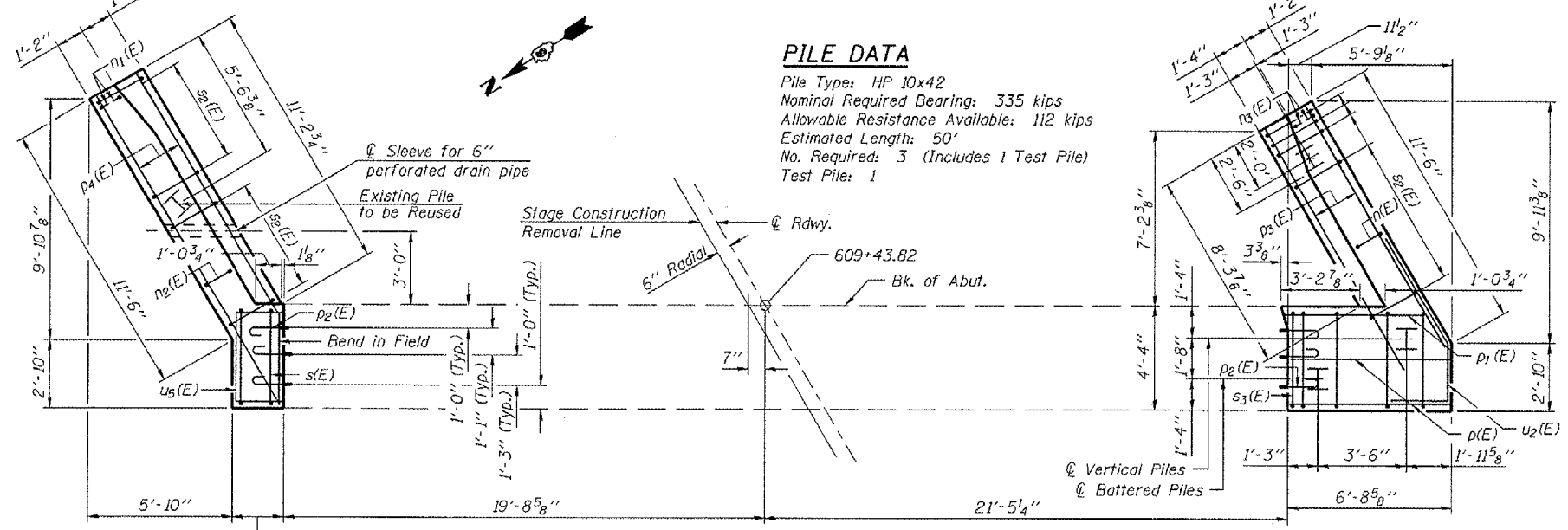
* Elevations given are from existing plans, and have been adjusted by deducting 0.69'. The comparison data is based on a survey of the existing bearing seats, and is subject to normal construction tolerance variations.



ELEVATION



ANCHOR BOLT LAYOUT DIMENSIONS



PLAN-PILE CAP

PILE DATA
 Pile Type: HP 10x42
 Nominal Required Bearing: 335 kips
 Allowable Resistance Available: 112 kips
 Estimated Length: 50'
 No. Required: 3 (Includes 1 Test Pile)
 Test Pile: 1

BILL OF MATERIAL

Bar	No.	Size	Length	Shape
h ₄ (E)	28	#4	11'-3"	
h ₅ (E)	20	#4	11'-3"	
h ₆ (E)	10	#5	20'-6"	
h ₇ (E)	14	#5	7'-3"	
h ₈ (E)	4	#6	20'-6"	
h ₉ (E)	14	#5	7'-3"	
h ₁₀ (E)	4	#6	25'-2"	
h ₂₅ (E)	10	#5	25'-2"	
n(E)	10	#6	12'-1"	
n ₁ (E)	6	#6	5'-10"	
n ₂ (E)	10	#6	15'-9"	
n ₃ (E)	6	#6	8'-0"	
p(E)	5	#7	6'-2"	
p ₁ (E)	3	#7	5'-8"	
p ₂ (E)	12	#6	2'-10"	
p ₃ (E)	6	#7	11'-6"	
p ₄ (E)	6	#7	14'-6"	
s(E)	3	#4	15'-1"	
s ₂ (E)	24	#4	9'-5"	
s ₃ (E)	7	#4	18'-9"	
u ₂ (E)	4	#6	7'-9"	
u ₅ (E)	4	#6	7'-7"	
v(E)	14	#4	6'-0"	
v ₁ (E)	42	#4	3'-7"	
v ₂ (E)	42	#4	3'-2"	
v ₃ (E)	8	#4	3'-5"	
v ₄ (E)	50	#4	3'-1"	
v ₅ (E)	24	#6	7'-2"	
v ₆ (E)	6	#6	7'-2"	
v ₇ (E)	20	#6	7'-6"	
Structure Excavation		Cu. Yd.	91	
Concrete Structures		Cu. Yd.	31.7	
Reinforcement Bars Epoxy Coated		Pound	3610	
Furnishing Steel Piles HP10x42		Lin. Ft.	100	
Driving Piles		Lin. Ft.	100	
Test Piles Steel HP10x42		Each	1	
Concrete Encasement		Cu. Yd.	1.1	

Reinforcement Bars designated (E) shall be Epoxy Coated.
 For details of Bar Splicers, see sheet 40 of 44.
 Bars epoxy grouted shall have an embedment sufficient to obtain 1.25 x the yield strength of the reinforcing bar.
 Drill holes for epoxy grouted bars to miss existing reinforcement.

Corporate License Number 184-001-084

EASTBOUND-EAST ABUTMENT
 F.A.I. 72 OVER UNION PACIFIC RAILROAD
 SECTION (84-9-4)A, HBK, BY, BY-1
 SANGAMON COUNTY
 STATION 608+51.98
 STR NO. 084-0074 EB - 084-0075 WB

MIN. BAR LAPS

- #4 Bar - 1'-8"
- #5 Bar - 2'-2"
- #6 Bar - 2'-7"
- #7 Bar - 3'-5"

© Copyright Hanson Professional Services Inc. SMS_YEAR\$



96S2002B
 DATE: 01/12/06