

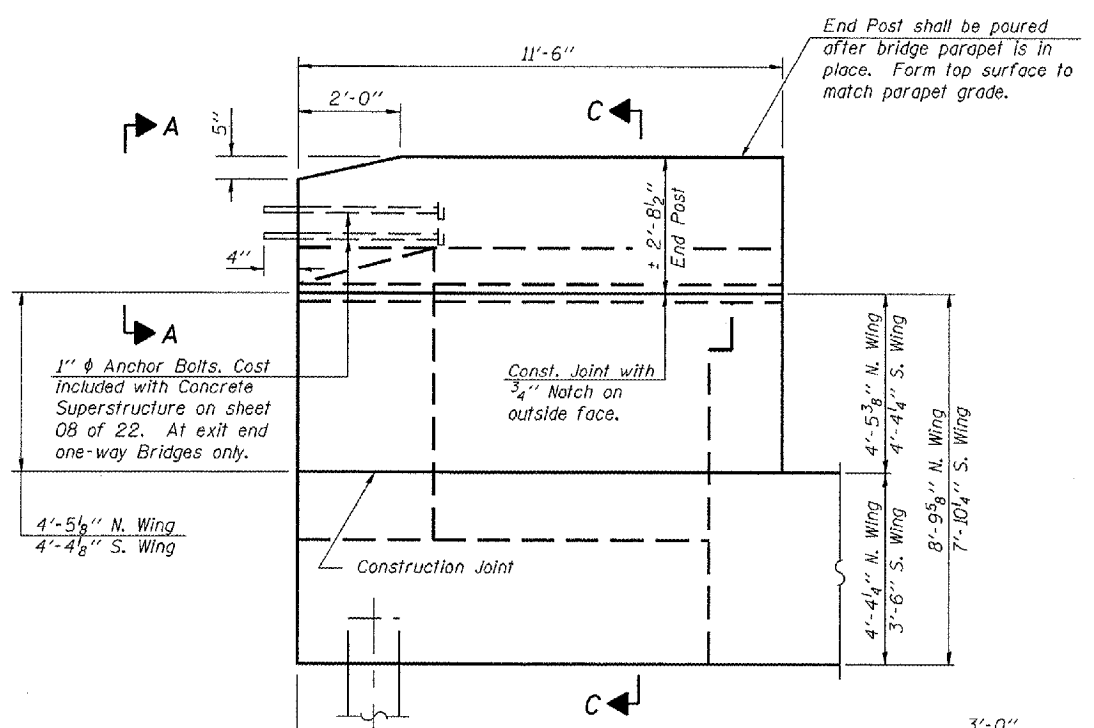
ROUTE NO.	SECTION	COUNTY	STATE	SHEET	SHEET NO. 18 22 SHEETS
FAI 72 FAU 8021	#	SANGAMON	559	315	
FED. ROAD DIST. NO. 7	ILLINOIS	FED. AID PROJECT-			

*84-9-4)A,HBK,BY,BY-1 Contract No. 72541

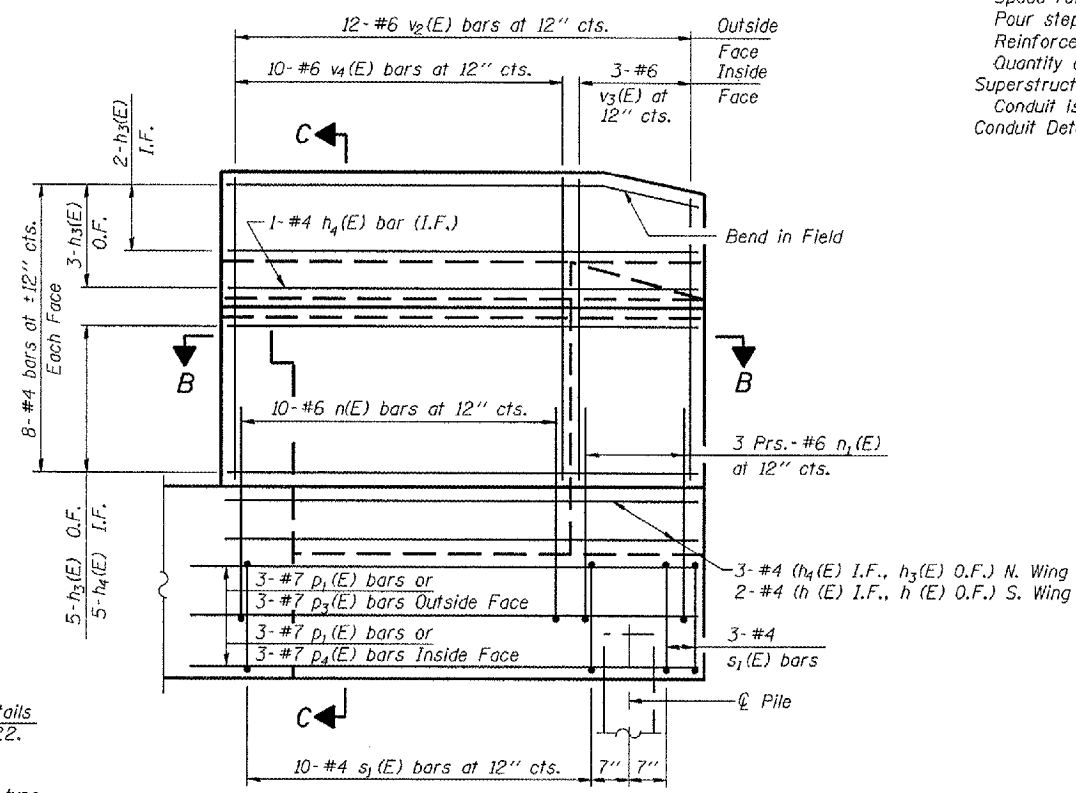
Notes: Hatched area to be poured after superstructure forms have been removed. Quantity of concrete included with Concrete Superstructure. Space reinforcement in cap to miss anchor bolts. Pour steps monolithically with cap. Reinforcement bars designated (E) shall be epoxy coated. Quantity of concrete in end post included with Concrete Superstructure on sheet 08 of 22. Conduit is embedded in the South Wing. For details, see Conduit Details sheet in the Roadway Plans.

MIN. BAR LAPS

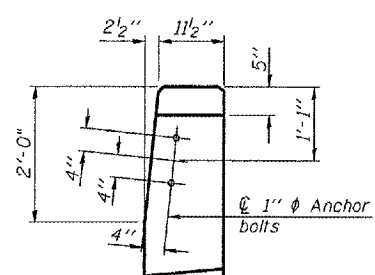
- #4 Bar - 1'-8"
- #5 Bar - 2'-2"
- #6 Bar - 2'-7"
- #7 Bar - 3'-5"
- #8 Bar - 4'-6"



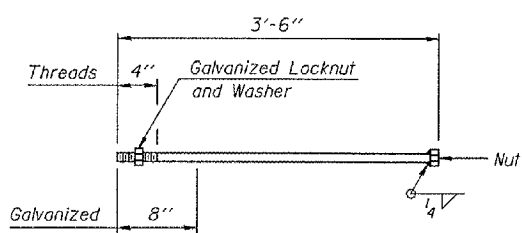
WING WALL ELEVATION
Showing Dimensions



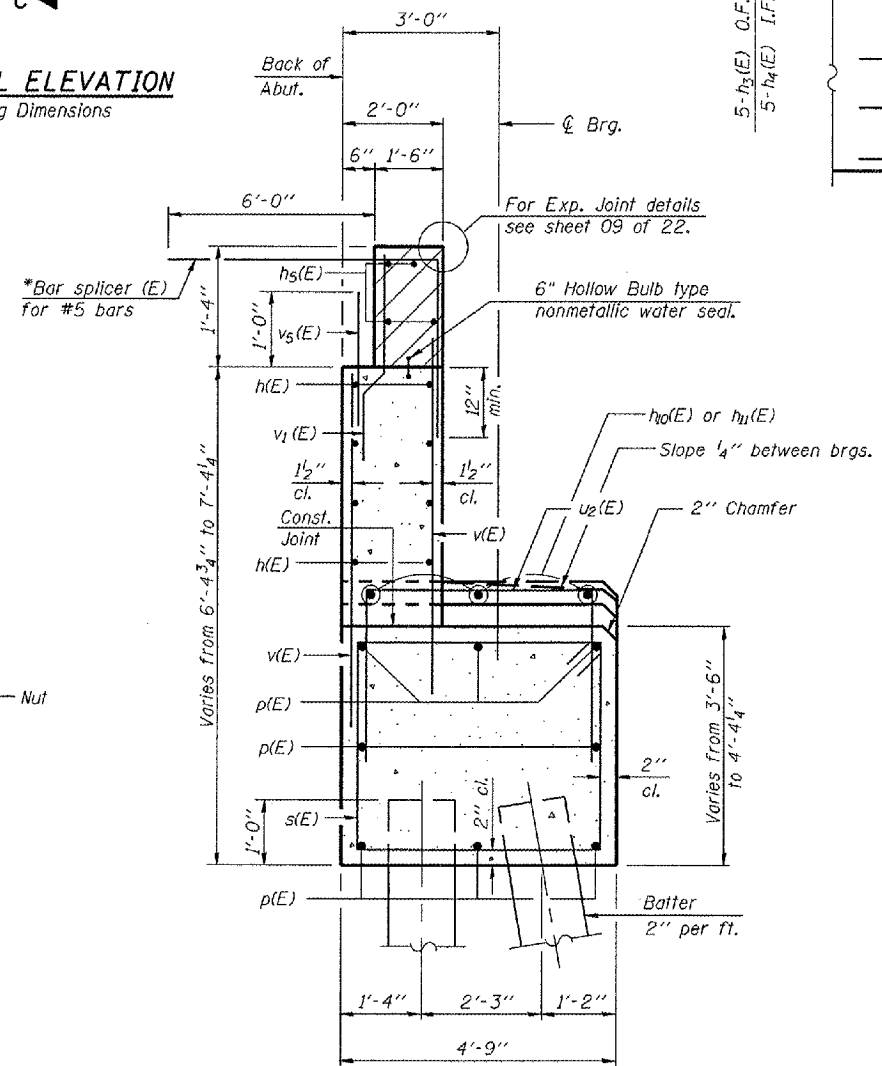
WING WALL ELEVATION
Showing Reinforcement



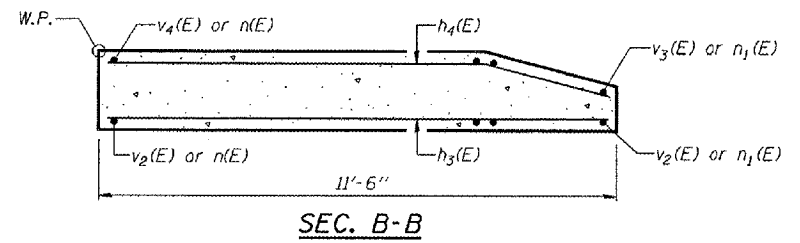
VIEW A-A



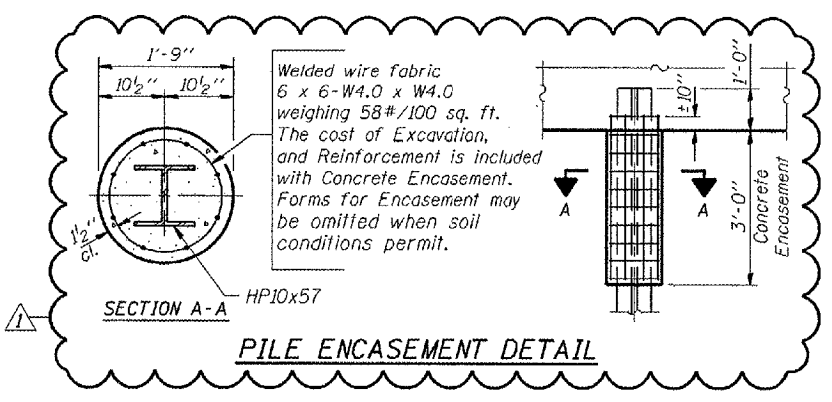
1" ANCHOR BOLT



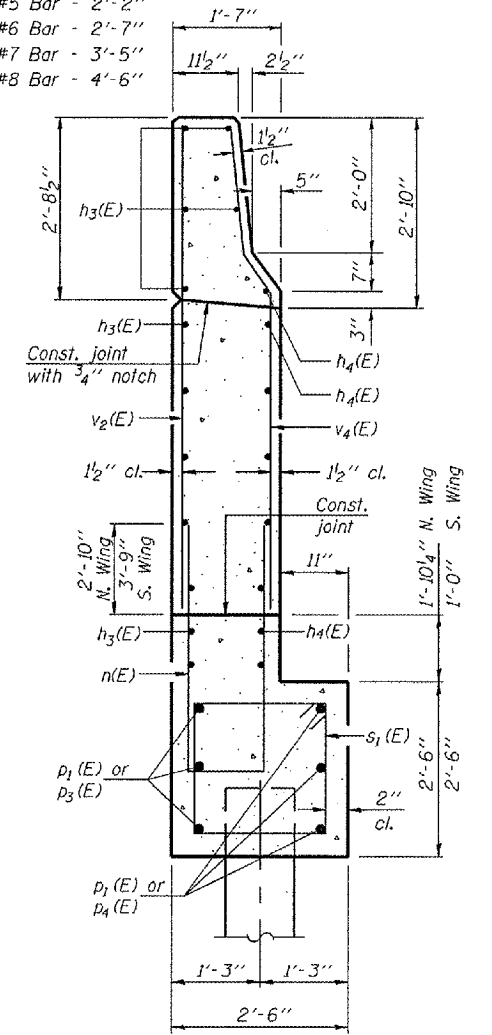
SEC. THRU ABUT.
*Alternate with #4 v(E) bars
Place parallel to the beams



SEC. B-B



PILE ENCASEMENT DETAIL



SECTION C-C

Corporate License Number 184-001-084
EAST ABUTMENT DETAILS
I-72/MACARTHUR BLVD. RAMP B OVER UPRR
SECTION (84-9-4)A,HBK,BY,BY-1
SANGAMON COUNTY
STATION 33+95.61
STRUCTURE NUMBER 084-0514

© Copyright Hanson Professional Services Inc. \$MS_YEARS
HANSON
 96S2002B
 DATE: 11/16/05

LAYOUT	MINA	06/27/03
DRAWN	DAP	01/04/05
REVIEWED	JMM	02/24/05