

(84-9-4)A, H.B.K. BY. BY-1 Contract No 72541
ANCHOR BOLT LAYOUT DIMENSIONS

Beam No.	A	B
1	8 ⁵ / ₁₆ "	4"
2	8 ⁵ / ₁₆ "	4"
3	8 ⁵ / ₁₆ "	4"
4	8 ⁵ / ₁₆ "	4 ¹ / ₁₆ "
5	8 ⁵ / ₁₆ "	4 ¹ / ₁₆ "

ABUTMENT

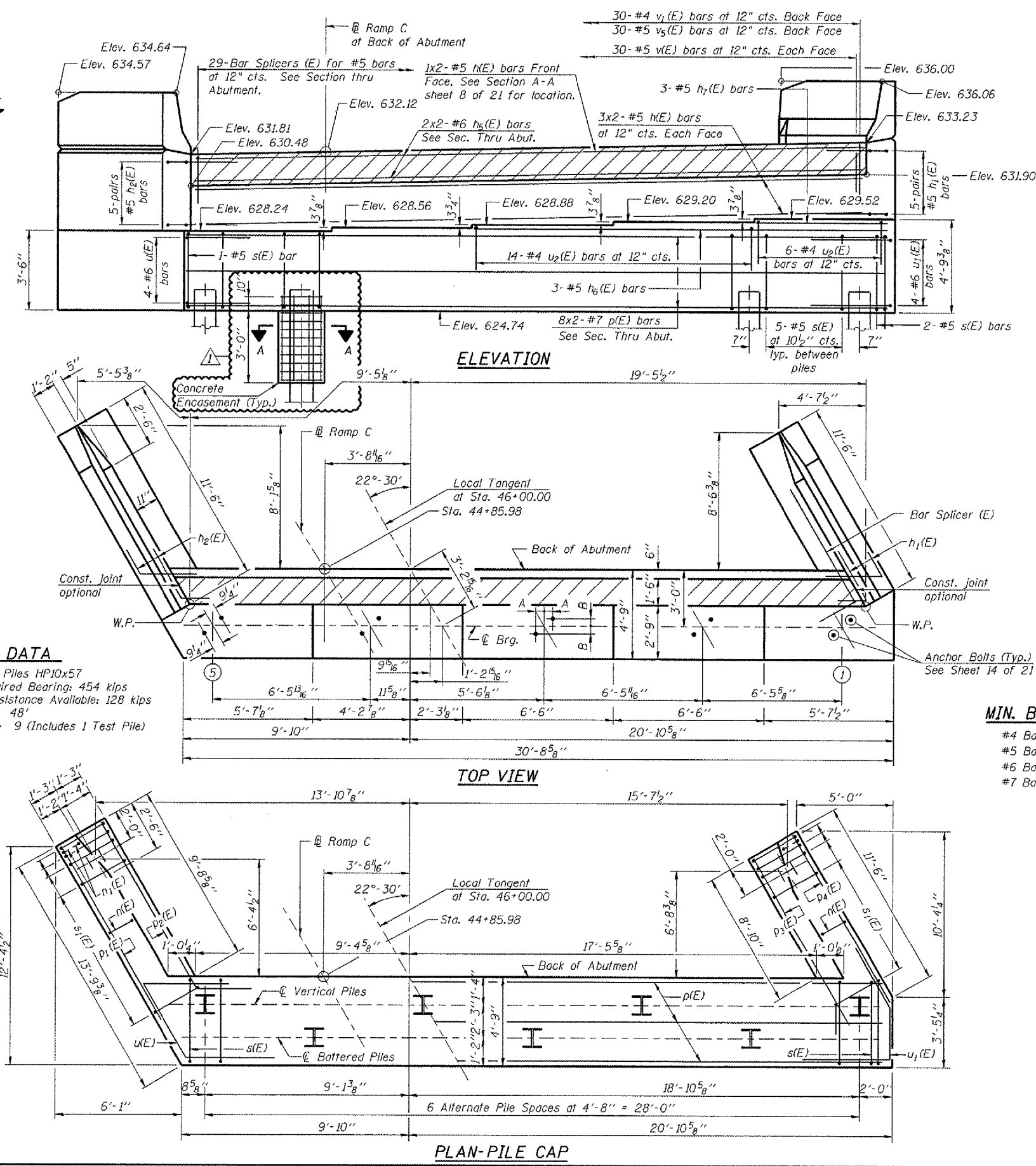
BILL OF MATERIAL

Bar	No.	Size	Length	Shape
h(E)	14	#5	15'-6"	
h ₁ (E)	10	#5	6'-2"	
h ₂ (E)	10	#5	6'-2"	
h ₃ (E)	25	#4	11'-3"	
h ₄ (E)	17	#4	11'-3"	
h ₅ (E)	8	#6	15'-7"	
h ₆ (E)	3	#5	17'-9"	
h ₇ (E)	3	#5	4'-9"	
n(E)	10	#6	14'-4"	
n ₁ (E)	6	#6	7'-2"	
n ₄ (E)	10	#6	11'-6"	
n ₅ (E)	6	#6	5'-9"	
p(E)	16	#7	17'-0"	
p ₁ (E)	3	#7	13'-0"	
p ₂ (E)	3	#7	13'-0"	
p ₃ (E)	3	#7	12'-0"	
p ₄ (E)	3	#7	11'-4"	
s(E)	33	#5	16'-1"	
s ₁ (E)	24	#4	9'-5"	
u(E)	4	#6	10'-0"	
u ₁ (E)	4	#6	8'-4"	
u ₂ (E)	20	#4	10'-5"	
v(E)	60	#5	5'-4"	
v ₁ (E)	30	#4	3'-1"	
v ₂ (E)	24	#6	6'-1"	
v ₃ (E)	6	#6	6'-1"	
v ₄ (E)	20	#6	6'-3"	
v ₅ (E)	30	#5	2'-10"	
Structure Excavation		Cu. Yd.	101	
Concrete Structures		Cu. Yd.	41.6	
Reinforcement Bars, Epoxy Coated		Pound	4190	
Furnishing Steel Piles HP10x57		Foot	384	
Driving Piles		Foot	384	
Test Piles Steel HP10x57		Each	1	
Concrete Encasement		Cu. Yd.	2.4	

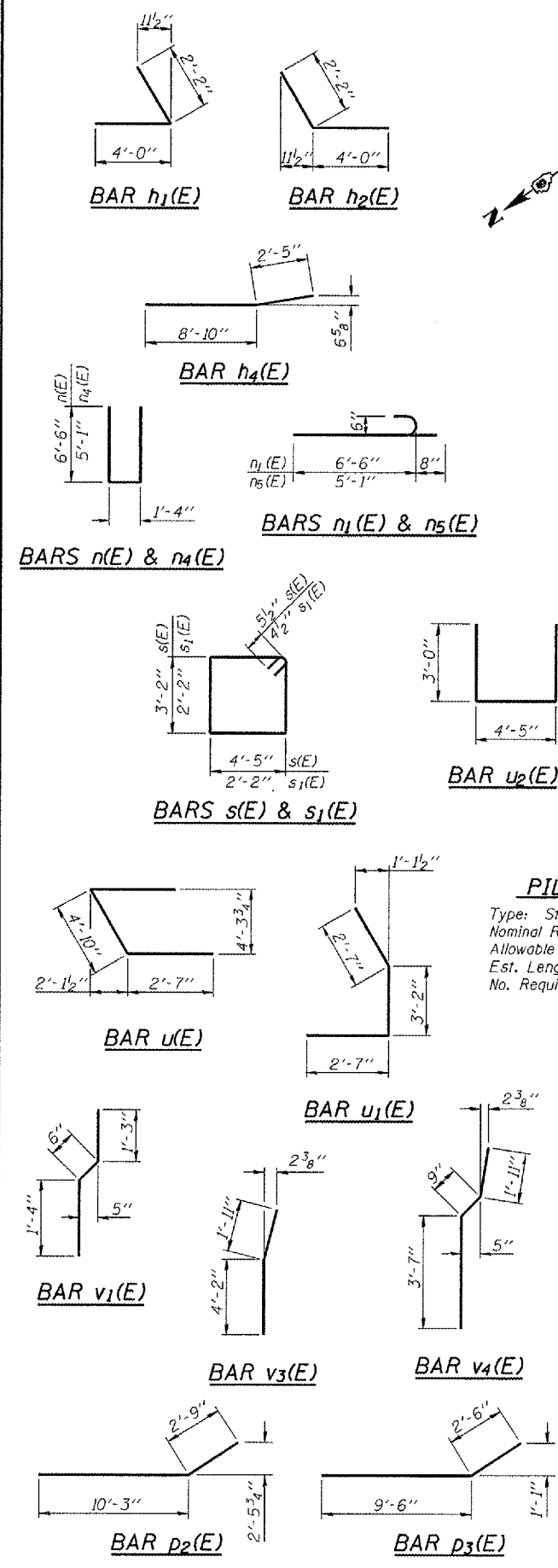
- MIN. BAR LAPS**
- #4 Bar - 1'-8"
 - #5 Bar - 2'-2"
 - #6 Bar - 2'-7"
 - #7 Bar - 3'-5"

Notes:
 Reinforcement bars designated (E) shall be epoxy coated. For details of Bar Splicers, see sheet 20 of 21. Conduit is embedded in the North Wing. For details see Conduit Details sheet in the Roadway Plans. Corporate License Number 184-001-084

EAST ABUTMENT
 I-72/MACARTHUR BLVD. RAMP C OVER UPRR
 SECTION (84-9-4)A, H.B.K. BY. BY-1
 SANGAMON COUNTY
 STATION 46+01.97
 STRUCTURE NUMBER 084-0516



PILE DATA
 Type: Steel Piles HP10x57
 Nominal Required Bearing: 454 kips
 Allowable Resistance Available: 128 kips
 Est. Length: 48'
 No. Required: 9 (Includes 1 Test Pile)



LAYOUT	MW	06/21/03
DRAWN	DAP	01/04/05
REVIEWED	JWN	02/24/05