

FAU ROUTE	SECTION	COUNTY	TOTAL SHEETS	SHEET NO.
8071	*	SANGAMON	559	106
STA. TO STA.		ILLINOIS FED. AID PROJECT		
FED. ROAD DIST. NO.		84-9-41A, H.B.K. BY BY-1 * 02-00382-02-PV		

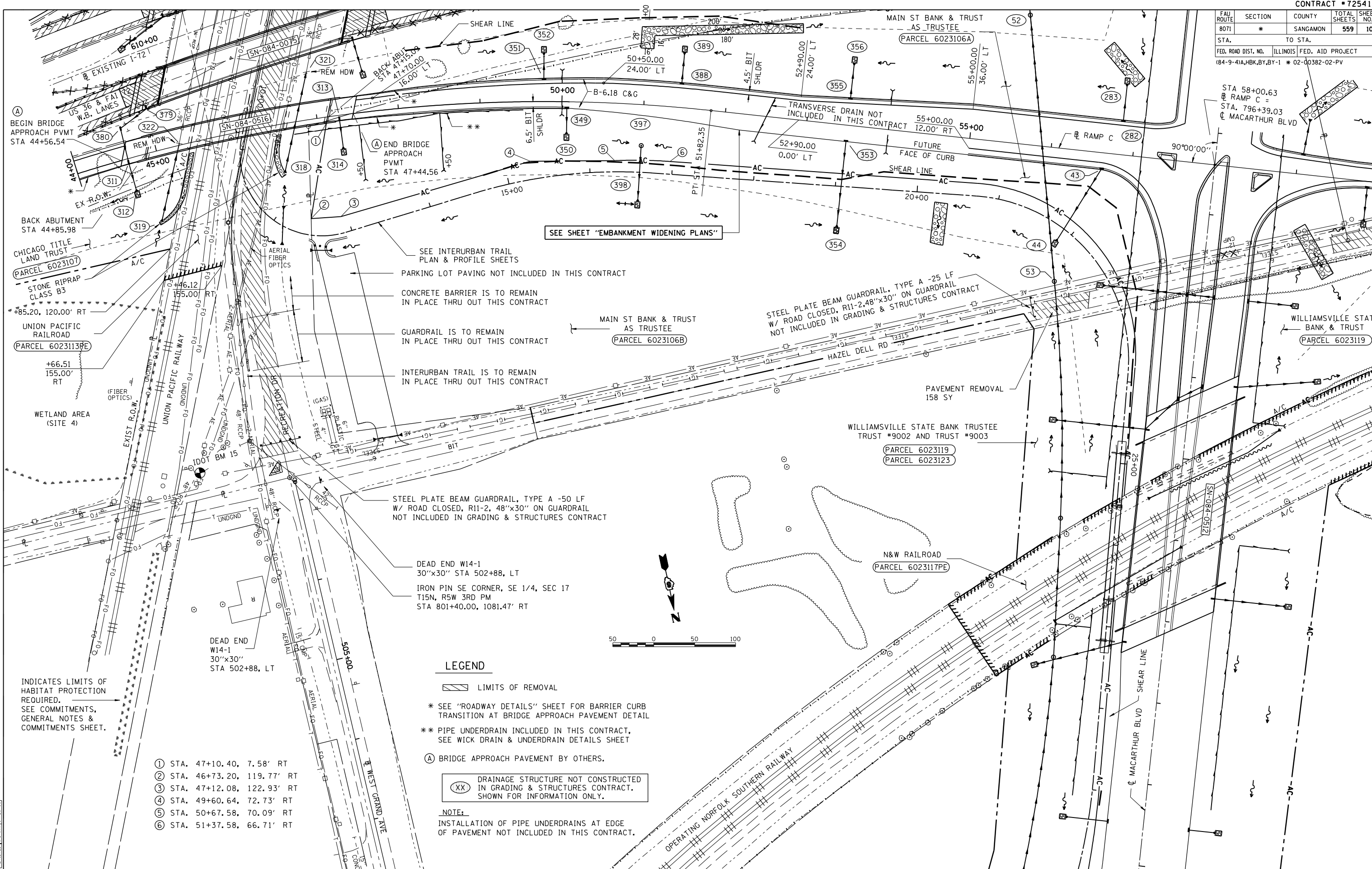
STA 58+00.63
 RAMP C =
 STA. 796+39.03
 CL MACARTHUR BLVD

DATE	BY



DATE	BY

DATE	BY



SEE SHEET "EMBANKMENT WIDENING PLANS"

SEE INTERURBAN TRAIL PLAN & PROFILE SHEETS

PARKING LOT PAVING NOT INCLUDED IN THIS CONTRACT

CONCRETE BARRIER IS TO REMAIN IN PLACE THRU OUT THIS CONTRACT

GUARDRAIL IS TO REMAIN IN PLACE THRU OUT THIS CONTRACT

INTERURBAN TRAIL IS TO REMAIN IN PLACE THRU OUT THIS CONTRACT

STEEL PLATE BEAM GUARDRAIL, TYPE A -50 LF W/ ROAD CLOSED, R11-2, 48"x30" ON GUARDRAIL NOT INCLUDED IN GRADING & STRUCTURES CONTRACT

DEAD END W14-1 30"x30" STA 502+88, LT
 IRON PIN SE CORNER, SE 1/4, SEC 17 T15N, R5W 3RD PM STA 801+40.00, 1081.47' RT

DEAD END W14-1 30"x30" STA 502+88, LT

LEGEND

- LIMITS OF REMOVAL
- * SEE "ROADWAY DETAILS" SHEET FOR BARRIER CURB TRANSITION AT BRIDGE APPROACH PAVEMENT DETAIL
- ** PIPE UNDERDRAIN INCLUDED IN THIS CONTRACT, SEE WICK DRAIN & UNDERDRAIN DETAILS SHEET
- (A) BRIDGE APPROACH PAVEMENT BY OTHERS.

DRAINAGE STRUCTURE NOT CONSTRUCTED IN GRADING & STRUCTURES CONTRACT. SHOWN FOR INFORMATION ONLY.

NOTE:
 INSTALLATION OF PIPE UNDERDRAINS AT EDGE OF PAVEMENT NOT INCLUDED IN THIS CONTRACT.

- ① STA. 47+10.40, 7.58' RT
- ② STA. 46+73.20, 119.77' RT
- ③ STA. 47+12.08, 122.93' RT
- ④ STA. 49+60.64, 72.73' RT
- ⑤ STA. 50+67.58, 70.09' RT
- ⑥ STA. 51+37.58, 66.71' RT

INDICATES LIMITS OF HABITAT PROTECTION REQUIRED. SEE COMMITMENTS, GENERAL NOTES & COMMITMENTS SHEET.

