

FAU ROUTE	SECTION	COUNTY	TOTAL SHEETS	SHEET NO.
8071	*	SANGAMON	559	113
STA. TO STA.				
FED. ROAD DIST. NO.		ILLINOIS FED. AID PROJECT		
		184-9-41A,HBK,BY-1* 02-00382-02-PV		

AGRICULTURAL SERVICES TRUST COMPANY, SUCCESSOR TRUSTEE JOHN M. KIMBLE TRUST
 (PARCEL 6023105)

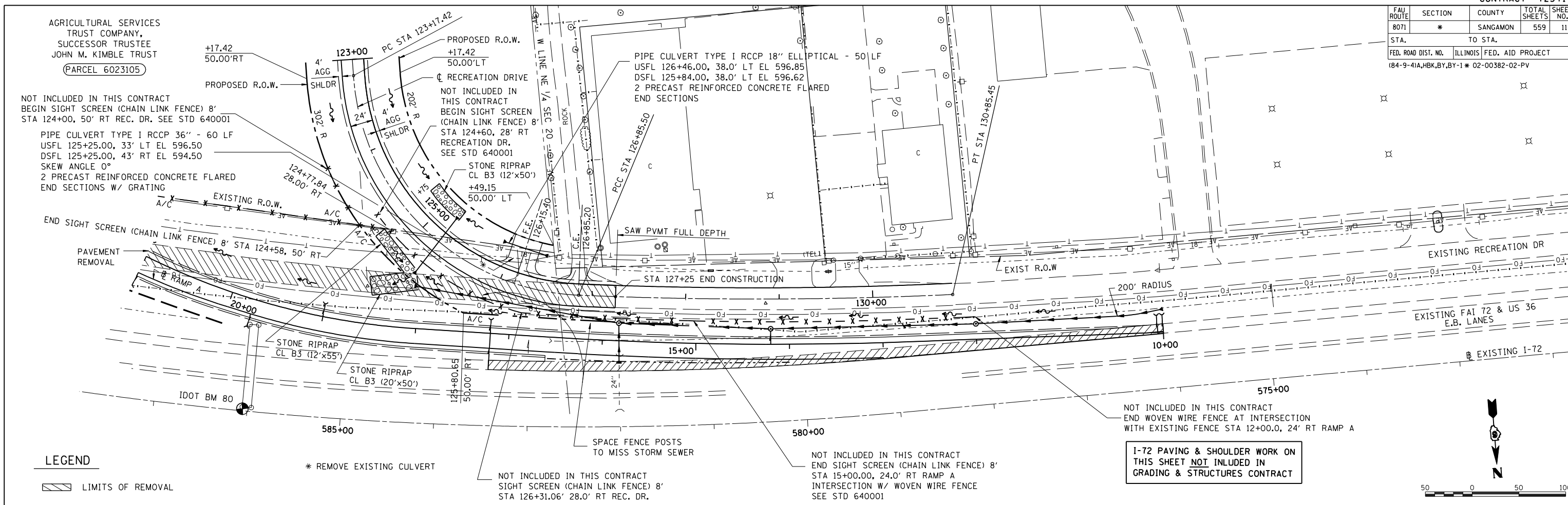
NOT INCLUDED IN THIS CONTRACT
 BEGIN SIGHT SCREEN (CHAIN LINK FENCE) 8' STA 124+00, 50' RT REC. DR. SEE STD 640001
 PIPE CULVERT TYPE I RCCP 36" - 60 LF USFL 125+25.00, 33' LT EL 596.50 DSFL 125+25.00, 43' RT EL 594.50 SKEWL ANGLE 0°
 2 PRECAST REINFORCED CONCRETE FLARED END SECTIONS W/ GRATING

PLAN	DATE	BY
SURVEYED		
PLOTTED		
NOTE BOOK		
NO.		



PROFILE	DATE	BY
SURVEYED		
PLOTTED		
NOTE BOOK		
NO.		

LAYOUT	CLG	DATE
DRAWN	CLG	04/28/06
REVIEWED	JAD/JMN	04/28/06



LEGEND

LIMITS OF REMOVAL

* REMOVE EXISTING CULVERT

NOT INCLUDED IN THIS CONTRACT
 SIGHT SCREEN (CHAIN LINK FENCE) 8' STA 126+31.06' 28.0' RT REC. DR.

NOT INCLUDED IN THIS CONTRACT
 END SIGHT SCREEN (CHAIN LINK FENCE) 8' STA 15+00.00, 24.0' RT RAMP A INTERSECTION W/ WOVEN WIRE FENCE SEE STD 640001

I-72 PAVING & SHOULDER WORK ON THIS SHEET NOT INCLUDED IN GRADING & STRUCTURES CONTRACT

