

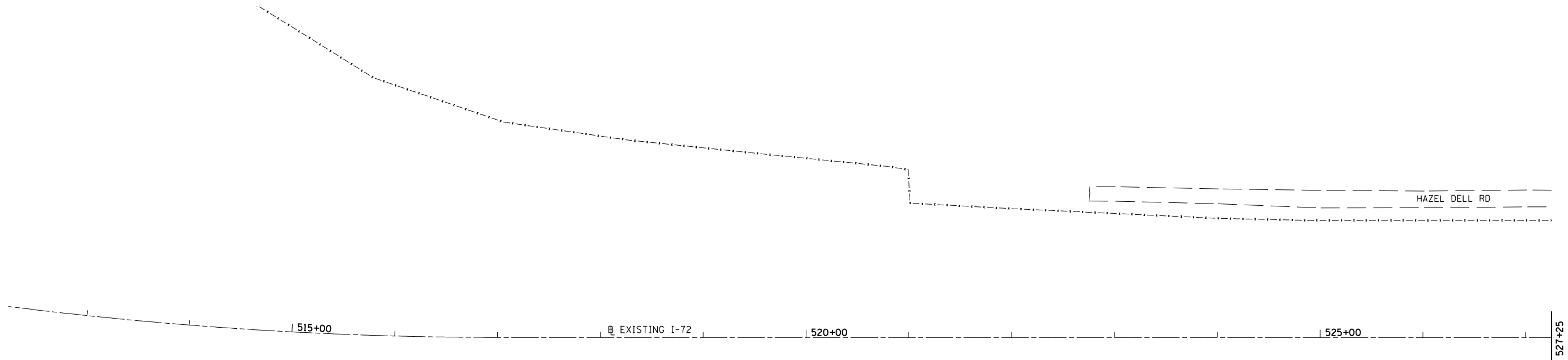
FAU ROUTE	SECTION	COUNTY	TOTAL SHEETS	SHEET NO.
8071	*	SANGAMON	559	120
STA.		TO STA.		
FED. ROAD DIST. NO.		ILLINOIS	FED. AID PROJECT	
(84-9-4)A,HBK,BY,BY-1 * 02-00382-02-PV				

PLAN	DATE
SURVEYED	
PLOTTED	
CHECKED	
BY	
NO.	



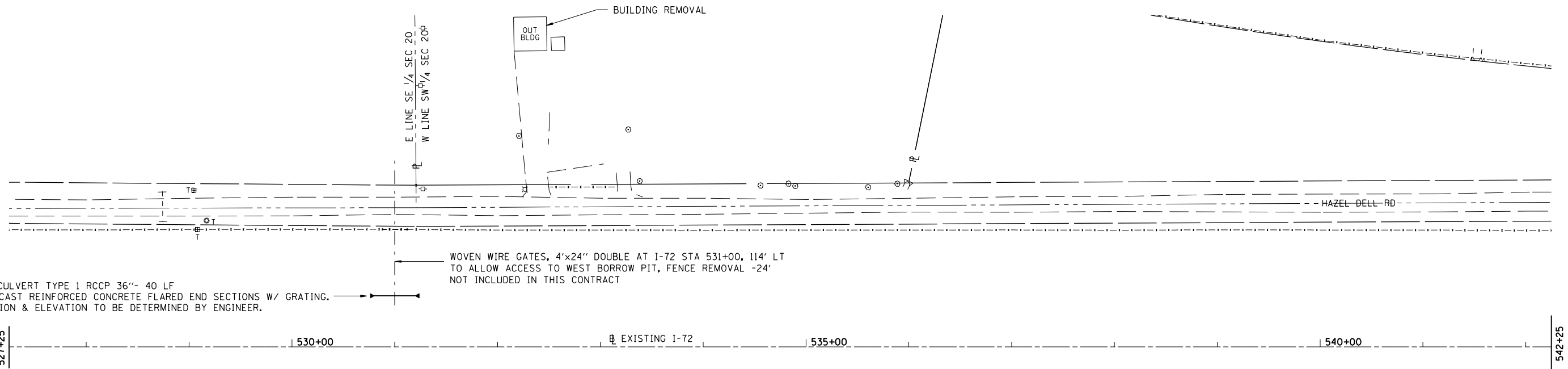
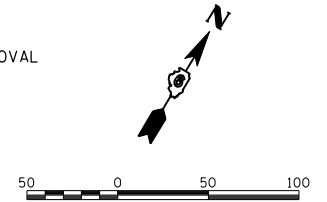
PROFILE	DATE
SURVEYED	
PLOTTED	
CHECKED	
BY	
NO.	

LAYOUT	DATE
CLG	04/28/06
CLG	04/28/06
REVIEWED	04/28/06



LEGEND

▭ LIMITS OF REMOVAL



PIPE CULVERT TYPE 1 RCCP 36"- 40 LF
 2 PRECAST REINFORCED CONCRETE FLARED END SECTIONS W/ GRATING.
 LOCATION & ELEVATION TO BE DETERMINED BY ENGINEER.

WOVEN WIRE GATES, 4'x24" DOUBLE AT I-72 STA 531+00, 114' LT
 TO ALLOW ACCESS TO WEST BORROW PIT, FENCE REMOVAL -24'
 NOT INCLUDED IN THIS CONTRACT