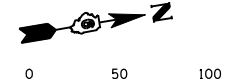
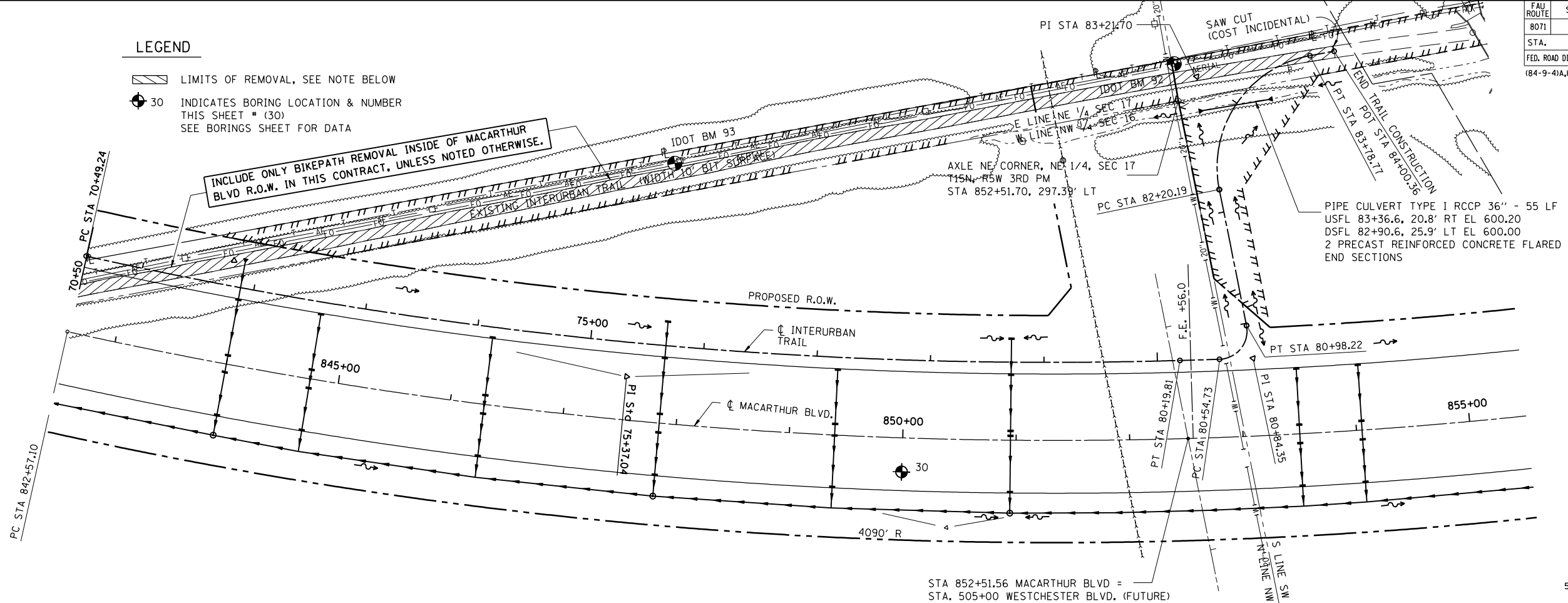


FAU ROUTE	SECTION	COUNTY	TOTAL SHEETS	SHEET NO.
8071	*	SANGAMON	559	127
STA. 8071		TO STA. 8072		
FED. ROAD DIST. NO. 184-9-41A, HBK, BY, BY-1		ILLINOIS FED. AID PROJECT NO. 02-00382-02-PV		

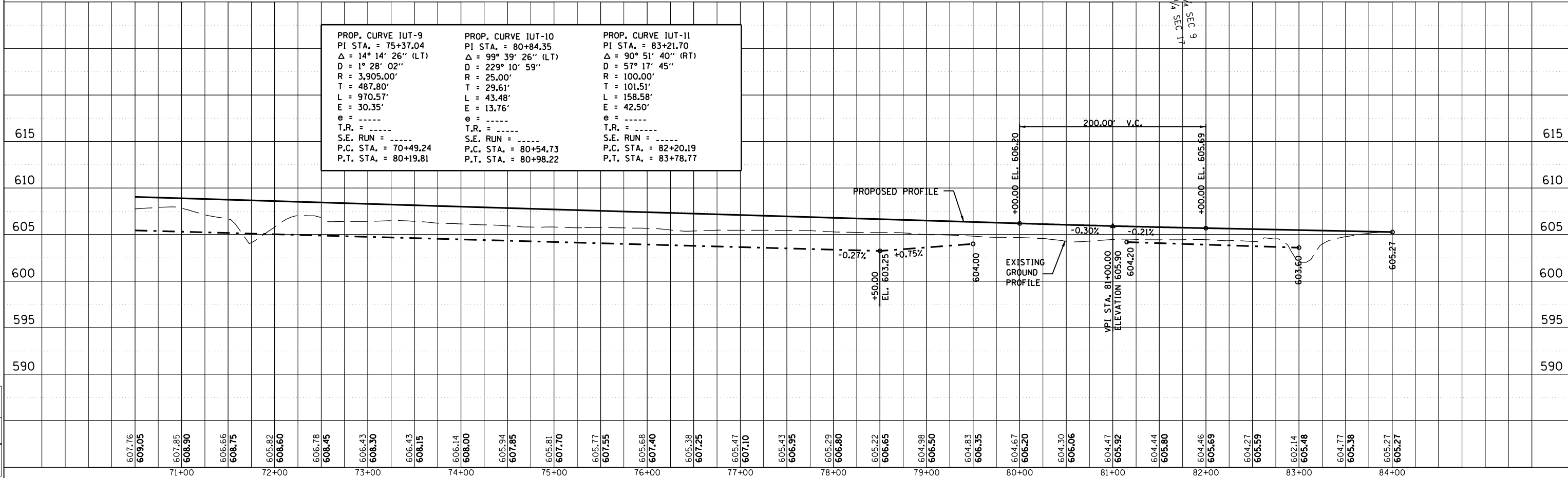
LEGEND

- LIMITS OF REMOVAL, SEE NOTE BELOW
- 30 INDICATES BORING LOCATION & NUMBER THIS SHEET \* (30) SEE BORINGS SHEET FOR DATA

INCLUDE ONLY BIKEPATH REMOVAL INSIDE OF MACARTHUR BLVD R.O.W. IN THIS CONTRACT, UNLESS NOTED OTHERWISE.



PROP. CURVE IUT-9	PROP. CURVE IUT-10	PROP. CURVE IUT-11
PI STA. = 75+37.04	PI STA. = 80+84.35	PI STA. = 83+21.70
$\Delta = 14^{\circ} 14' 26''$ (LT)	$\Delta = 99^{\circ} 39' 26''$ (LT)	$\Delta = 90^{\circ} 51' 40''$ (RT)
D = $1^{\circ} 28' 02''$	D = $229^{\circ} 10' 59''$	D = $57^{\circ} 17' 45''$
R = 3,905.00'	R = 25.00'	R = 100.00'
T = 487.80'	T = 29.61'	T = 101.51'
L = 970.57'	L = 43.48'	L = 158.58'
E = 30.35'	E = 13.76'	E = 42.50'
e = -----	e = -----	e = -----
T.R. = -----	T.R. = -----	T.R. = -----
S.E. RUN = -----	S.E. RUN = -----	S.E. RUN = -----
P.C. STA. = 70+49.24	P.C. STA. = 80+54.73	P.C. STA. = 82+20.19
P.T. STA. = 80+19.81	P.T. STA. = 80+98.22	P.T. STA. = 83+78.77



DATE	BY	REVISION

Copyright Hanson Professional Services Inc. 2006  
**HANSON**  
 SURVEYED, PLOTTED, CHECKED, DATE FILED  
 NOTE BOOK NO., STRUCTURE NOTATIONS CHRD

DATE	BY	REVISION

LAYOUT	CLG	04/28/06
DRAWN	CLG	04/28/06
REVIEWED	JAD/JIM	04/28/06
607.76	609.05	71+00
607.85	608.90	72+00
606.66	608.75	73+00
605.82	608.60	74+00
606.78	608.45	75+00
606.43	608.30	76+00
606.43	608.15	77+00
606.14	608.00	78+00
605.94	607.85	79+00
605.81	607.70	80+00
605.77	607.55	81+00
605.68	607.40	82+00
605.38	607.25	83+00
605.47	607.10	84+00
605.43	606.95	
605.29	606.80	
605.22	606.65	
604.98	606.50	
604.83	606.35	
604.67	606.20	
604.30	606.06	
604.47	605.92	
604.44	605.80	
604.46	605.69	
604.27	605.59	
602.14	605.48	
604.77	605.38	
605.27	605.27	