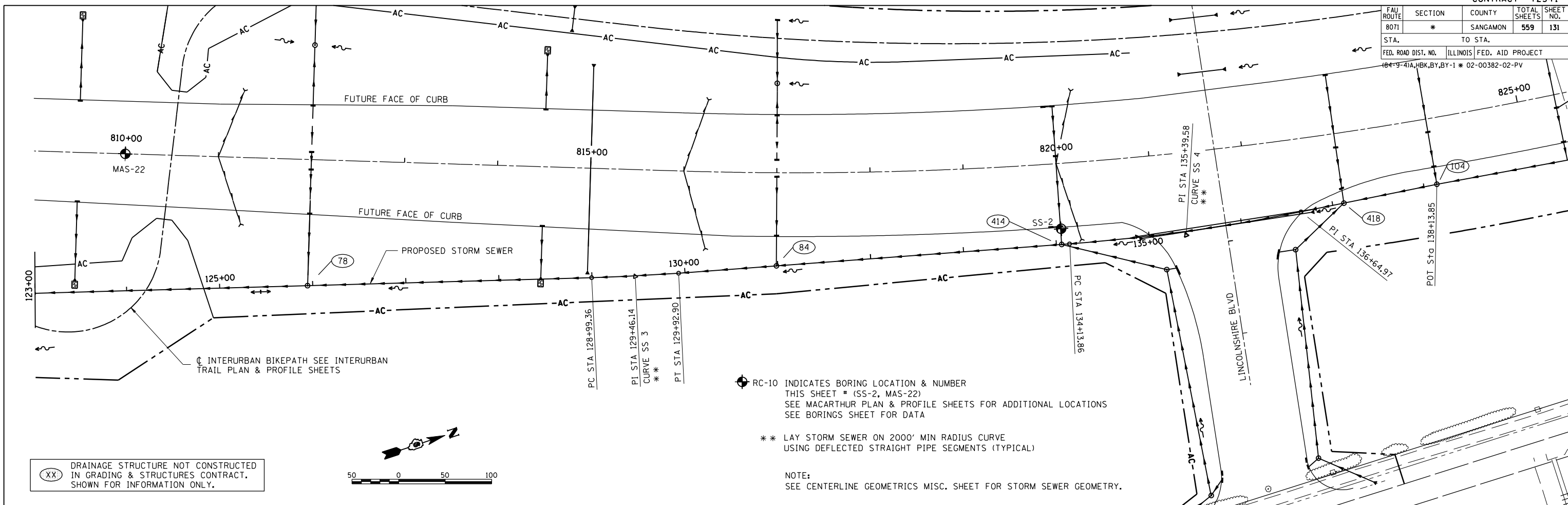


FAU ROUTE	SECTION	COUNTY	TOTAL SHEETS	SHEET NO.
8071	*	SANGAMON	559	131
STA.	TO STA.			
FED. ROAD DIST. NO.		ILLINOIS	FED. AID PROJECT	
184-9-41A, H.B.K., BY, BY-1 * 02-00382-02-PV				



RC-10 INDICATES BORING LOCATION & NUMBER
 THIS SHEET # (SS-2, MAS-22)
 SEE MACARTHUR PLAN & PROFILE SHEETS FOR ADDITIONAL LOCATIONS
 SEE BORINGS SHEET FOR DATA

** LAY STORM SEWER ON 2000' MIN RADIUS CURVE
 USING DEFLECTED STRAIGHT PIPE SEGMENTS (TYPICAL)

NOTE:
 SEE CENTERLINE GEOMETRICS MISC. SHEET FOR STORM SEWER GEOMETRY.

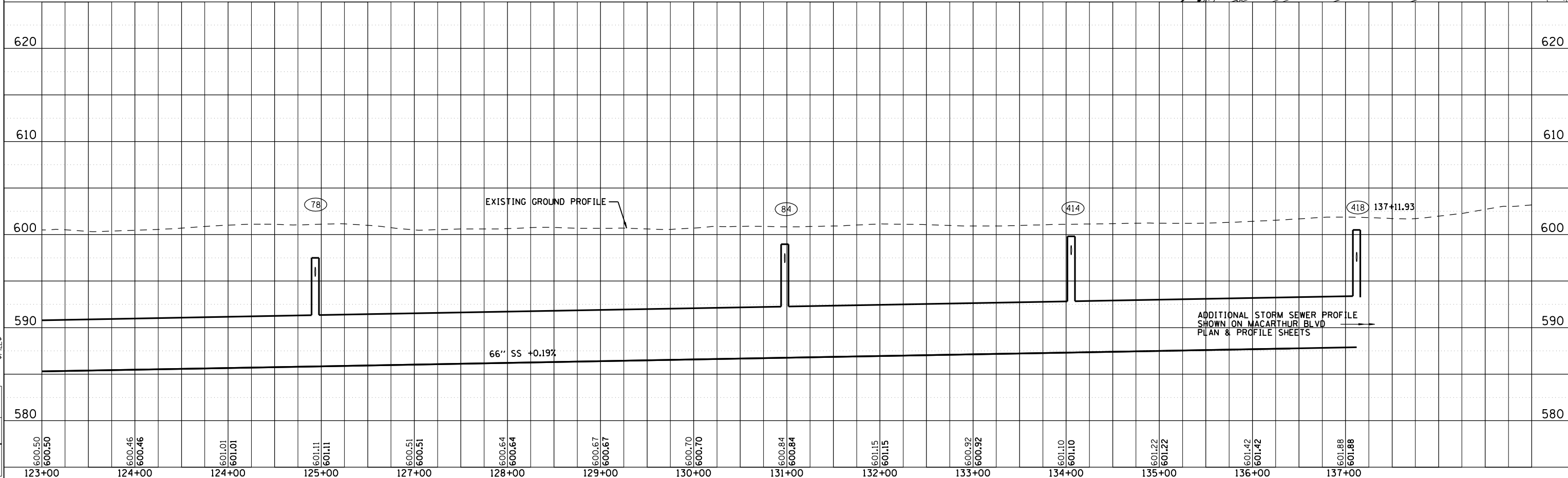
XX DRAINAGE STRUCTURE NOT CONSTRUCTED
 IN GRADING & STRUCTURES CONTRACT.
 SHOWN FOR INFORMATION ONLY.

PLAN	DATE
SURVEYED	
PLOTTED	
CHECKED	
NO. OF WAY CHECKED	
CADD FILE NAME	



PROFILE	DATE
SURVEYED	
PLOTTED	
CHECKED	
NO. OF WAY CHECKED	
STRUCTURE NOTATIONS CHKD	

LAYOUT	DATE
CLG	04/28/06
CLG	04/28/06
REVIEWED	JAD/JM
	04/28/06



MACARTHUR BLVD. STORM SEWER STA. 123+00 TO STA 137+11.93