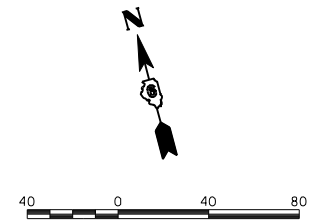
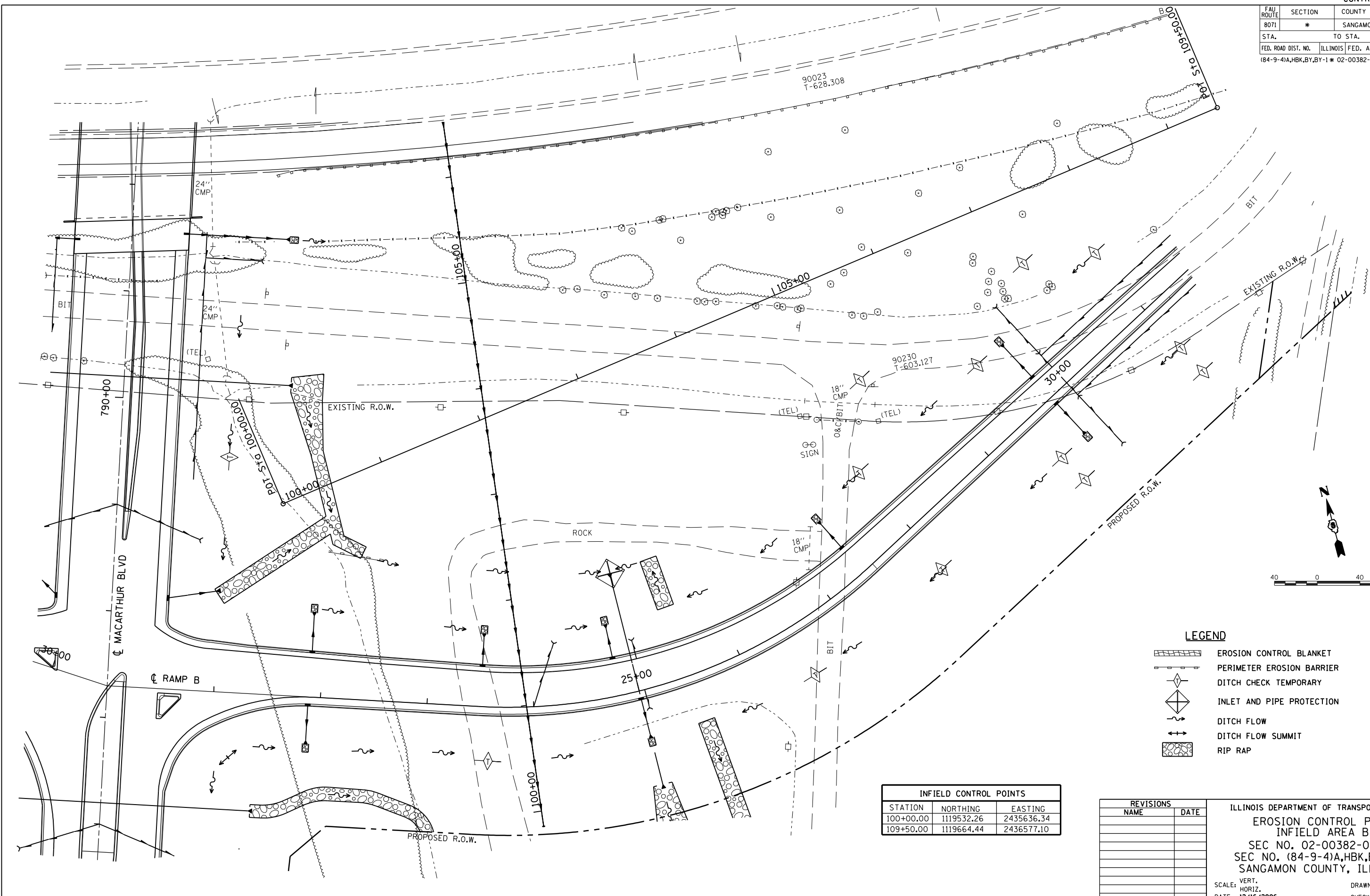


|  |         |                           |              |           |
|--|---------|---------------------------|--------------|-----------|
| FAU ROUTE                              | SECTION | COUNTY                    | TOTAL SHEETS | SHEET NO. |
| 8071                                   | *       | SANGAMON                  | 559          | 153       |
| STA.                                   |         | TO STA.                   |              |           |
| FED. ROAD DIST. NO.                    |         | ILLINOIS FED. AID PROJECT |              |           |
| (84-9-4)A,HBK,BY,BY-1 * 02-00382-02-PV |         |                           |              |           |



**LEGEND**

- EROSION CONTROL BLANKET
- PERIMETER EROSION BARRIER
- DITCH CHECK TEMPORARY
- INLET AND PIPE PROTECTION
- DITCH FLOW
- DITCH FLOW SUMMIT
- RIP RAP

| INFIELD CONTROL POINTS |            |            |
|------------------------|------------|------------|
| STATION                | NORTHING   | EASTING    |
| 100+00.00              | 1119532.26 | 2435636.34 |
| 109+50.00              | 1119664.44 | 2436577.10 |

| REVISIONS |      |
|-----------|------|
| NAME      | DATE |
|           |      |
|           |      |
|           |      |
|           |      |
|           |      |
|           |      |
|           |      |
|           |      |
|           |      |
|           |      |

ILLINOIS DEPARTMENT OF TRANSPORTATION  
**EROSION CONTROL PLAN**  
**INFIELD AREA B**  
 SEC NO. 02-00382-02-PV  
 SEC NO. (84-9-4)A,HBK,BY,BY-1  
 SANGAMON COUNTY, ILLINOIS

SCALE: VERT. \_\_\_\_\_  
 HORIZ. \_\_\_\_\_  
 DATE: 12/16/2006

DRAWN BY: DJP  
 CHECKED BY: JWM

12/16/2006 \$FILES  
 LAYOUT CLG 08/05/06  
 DRAWN CLG 08/05/06  
 REVIEWED JMW/JMW 08/05/06