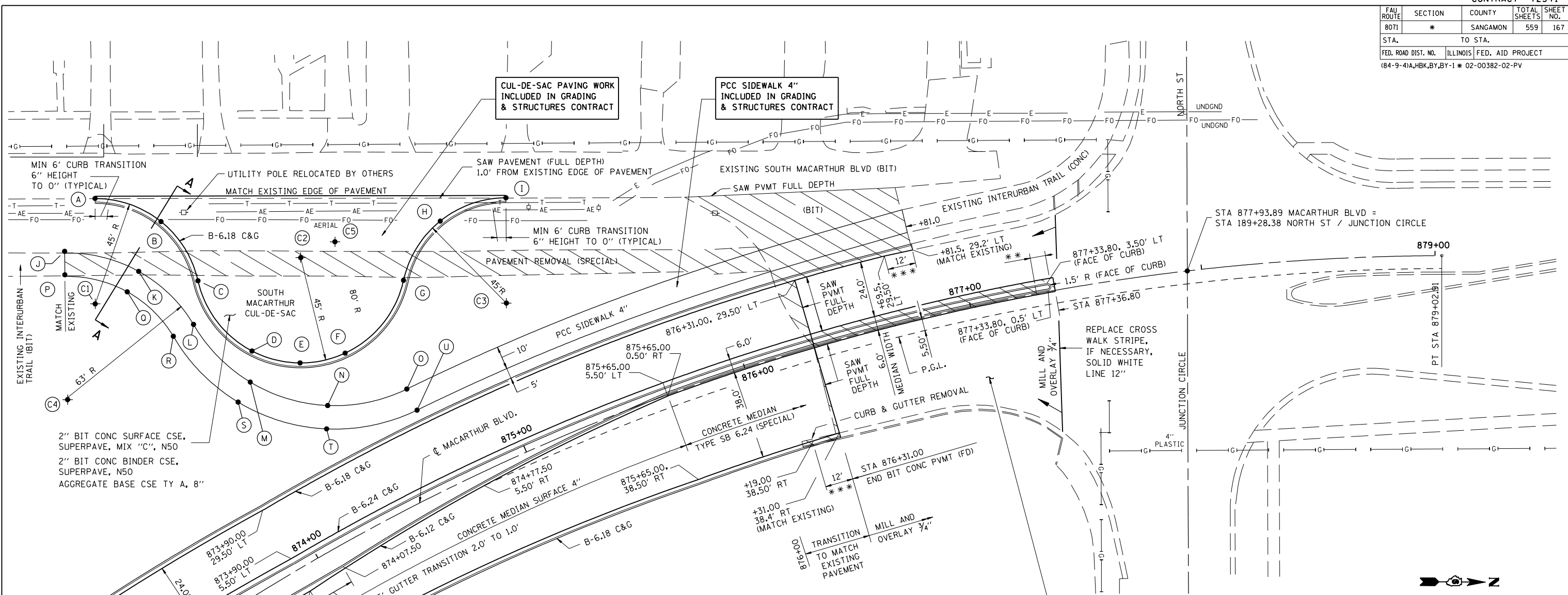


FAU ROUTE	SECTION	COUNTY	TOTAL SHEETS	SHEET NO.
8071	*	SANGAMON	559	167
STA.		TO STA.		
FED. ROAD DIST. NO.		ILLINOIS FED. AID PROJECT		
(84-9-4)A,HBK,BY,BY-1 * 02-00382-02-PV				



ELEVATIONS ARE TOP OF FUTURE PAVEMENT

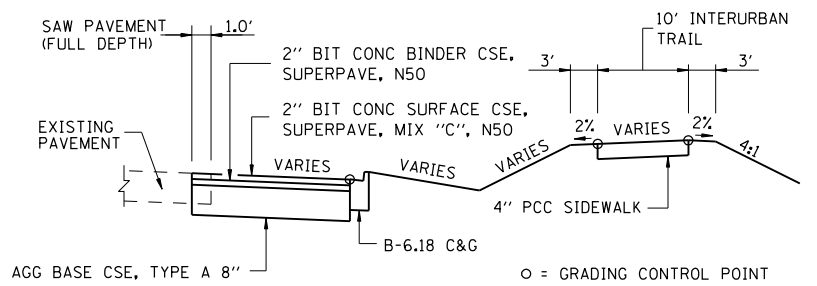
SOUTH MACARTHUR CUL-DE-SAC						
STATION	OFFSET	C OR B	NORTHING	EASTING	ELEVATION	
A	873+94.94	-180.64	MACARTHUR	1127681.342	2436729.155	603.99
B	874+11.60	-158.14	MACARTHUR	1127709.596	2436738.668	603.83
C	874+12.89	-128.37	MACARTHUR	1127725.703	2436763.755	603.51
D	874+17.97	-90.91	MACARTHUR	1127749.150	2436793.503	603.20
E	874+32.66	-76.49	MACARTHUR	1127770.100	2436798.356	603.13
F	874+50.04	-71.50	MACARTHUR	1127788.948	2436793.933	603.22
G	874+83.34	-88.53	MACARTHUR	1127813.536	2436762.556	603.71
H	875+05.82	-105.14	MACARTHUR	1127828.924	2436737.061	604.12
I	875+32.67	-103.43	MACARTHUR	1127856.864	2436726.757	604.33
J	873+75.35	-167.28	MACARTHUR	1127668.604	2436752.606	605.65
K	873+95.33	-144.36	MACARTHUR	1127700.335	2436760.066	605.50
L	874+03.26	-113.03	MACARTHUR	1127724.022	2436782.458	604.56
M	874+11.45	-79.67	MACARTHUR	1127748.560	2436806.780	604.20
N	874+34.14	-55.07	MACARTHUR	1127781.742	2436816.403	604.40
O	874+65.83	-46.00	MACARTHUR	1127815.485	2436808.983	604.79
P	873+70.96	-158.70	MACARTHUR	1127668.828	2436762.604	606.08
Q	873+87.80	-139.31	MACARTHUR	1127695.549	2436768.846	605.75
R	873+94.30	-112.87	MACARTHUR	1127715.498	2436787.688	604.76
S	874+03.38	-74.76	MACARTHUR	1127743.490	2436815.400	604.40
T	874+29.30	-46.46	MACARTHUR	1127781.413	2436826.398	604.60
U	874+65.83	-36.00	MACARTHUR	1127819.976	2436817.918	604.99
C1	873+75.23	-141.95	MACARTHUR	1127681.920	2436774.151	NA
C2	874+51.44	-116.48	MACARTHUR	1127769.485	2436753.360	NA
C3	875+16.94	-61.79	MACARTHUR	1127857.586	2436771.752	NA
C4	873+47.15	-113.58	MACARTHUR	1127670.626	2436815.218	NA
C5	874+65.83	-116.00	MACARTHUR	1127784.045	2436746.441	NA

OFFSET (-00.00) = LEFT & (00.00) = RIGHT

- \*\* RAMP MEDIAN NOSES IN ACCORDANCE WITH STD 606301
- \*\*\* TRANSITION TO MATCH EXISTING C&G PAID FOR AS B-6.18 C&G



EXCEPT FOR CUL-DE-SAC, PCC SIDEWALK, & GRADING, WORK ON THIS SHEET FOR INFORMATION ONLY NOT INCLUDED IN GRADING & STRUCTURES CONTRACT



REVISIONS	
NAME	DATE

ILLINOIS DEPARTMENT OF TRANSPORTATION  
 INTERSECTION DETAIL  
 MACARTHUR BLVD/JUNCTION CIRCLE  
 SEC NO. 02-00382-02-PV  
 SEC NO. (84-9-4)A,HBK,BY,BY-1  
 SANGAMON COUNTY, ILLINOIS  
 SCALE: VERT. HORIZ. DATE: 12/16/2006  
 DRAWN BY: CLG  
 CHECKED BY: JAD

12/16/2006  
 CLG 04/28/06  
 CLG 04/28/06  
 JAD/JMD 04/28/06