

FAU ROUTE	SECTION	COUNTY	TOTAL SHEETS	SHEET NO.
8071	*	SANGAMON	559	189
STA.		TO STA.		
FED. ROAD DIST. NO.		ILLINOIS FED. AID PROJECT		
184-9-4)A,HBK,BY,BY-1 * 02-00382-02-PV				

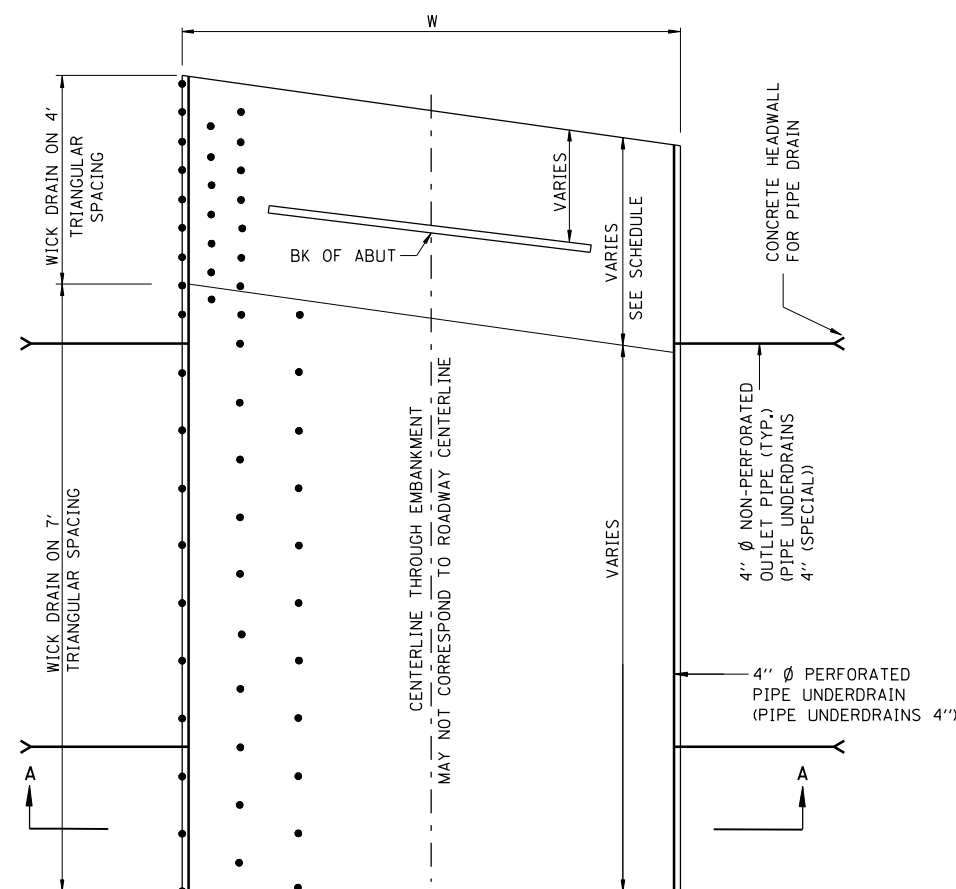
WICK DRAINS SCHEDULE

ROADWAY	BEGIN STATION PIPE UNDERDRAINS 4"	END STATION PIPE UNDERDRAINS 4"	WICK SPACING	WIDTH (W)	NO. OF ROWS **	NO. VERT DRAINS PER ROW	ESTIMATED DRAIN TIP EL	AVG VERT DRAIN LENGTH	LIN FT OF VERT DRAIN	OUTLET PIPE LOCATIONS
MAC ARTHUR BLVD	789+27, 75' LT	791+31, 75' LT	7' TRIANGULAR SPACING	150'	43	17	584	18'	13,160	790+20 LT *** 790+20 RT ***
	789+27, 75' RT	791+31, 75' RT	7' TRIANGULAR SPACING	150'	43	17	584	18'	13,160	790+20 LT *** 790+20 RT ***
MAC ARTHUR BLVD	791+31, 75' LT	791+47, 75' LT	4' TRIANGULAR SPACING	150'	76	5	584	19'	7,220	791+35 LT *** 791+35 RT ***
	791+31, 75' RT	791+59, 75' RT	4' TRIANGULAR SPACING	150'	76	5	584	19'	7,220	791+35 LT *** 791+35 RT ***
MAC ARTHUR BLVD	793+78, 85' LT	794+29, 85' LT	4' TRIANGULAR SPACING	170'	86	6	583	20'	10,320	794+13 LT *** 794+28 RT ***
	793+90, 85' RT	794+29, 85' RT	4' TRIANGULAR SPACING	170'	86	6	583	20'	10,320	794+13 LT *** 794+28 RT ***
MAC ARTHUR BLVD	794+29, 85' LT	799+21, 85' LT	7' TRIANGULAR SPACING	170'	50	41	580	23'	47,150	-
	794+29, 85' RT	799+21, 85' RT	7' TRIANGULAR SPACING	170'	50	41	580	23'	47,150	-
MAC ARTHUR BLVD	799+21, 85' LT	799+47, 85' LT	4' TRIANGULAR SPACING	170'	86	10	580	23'	19,780	799+47 LT 800+32 RT
	799+21, 85' RT	800+47, 85' RT	4' TRIANGULAR SPACING	170'	86	10	580	23'	19,780	799+47 LT 800+32 RT
MAC ARTHUR BLVD	800+98, 85' LT	802+19, 85' LT	4' TRIANGULAR SPACING	170'	86	10	579	23'	19,780	800+98 LT 802+17 RT
	801+93, 85' RT	802+19, 85' RT	4' TRIANGULAR SPACING	170'	86	10	579	23'	19,780	800+98 LT 802+17 RT
MAC ARTHUR BLVD	802+19, 85' LT	804+23, 85' LT	7' TRIANGULAR SPACING	170'	50	17	579	23'	19,550	-
	802+19, 85' RT	804+23, 85' RT	7' TRIANGULAR SPACING	170'	50	17	579	23'	19,550	-
RAMP B	29+99, 40' LT	32+03, 40' LT	7' TRIANGULAR SPACING	65'	20	17	582	23'	7,820	30+00 LT 30+00 RT
	29+99, 25' RT	32+03, 25' RT	7' TRIANGULAR SPACING	65'	20	17	582	23'	7,820	30+00 LT 30+00 RT
RAMP B	32+03, 40' LT	33+20, 40' LT	4' TRIANGULAR SPACING	65'	33	10	582	23'	7,590	-
	32+03, 25' RT	32+58, 25' RT	4' TRIANGULAR SPACING	65'	33	10	582	23'	7,590	-
RAMP B	35+20, 40' LT	36+00, 30' LT	4' TRIANGULAR SPACING	60'	31	10	586	17'	5,270	35+20 LT 35+70 RT
	34+98, 25' RT	35+73, 25' RT	4' TRIANGULAR SPACING	60'	31	10	586	17'	5,270	35+20 LT 35+70 RT
RAMP C	46+69, 25' RT	47+49, 25' RT	4' TRIANGULAR SPACING	60'	31	10	582	20'	6,200	-
	47+49, 25' RT	49+53, 25' RT	7' TRIANGULAR SPACING	60'	18	17	582	20'	6,120	47+50 RT 48+50 RT

SAND DRAINAGE BLANKET SCHEDULE

BEGIN STATION	END STATION	SAND DRAINAGE BLANKET CU YD
MAC. BLVD		
789+27.00	791+66.00	1328
793+84.00	799+21.00	3381
799+21.00	799+95.00	466
801+45.00	802+19.00	466
802+19.00	804+23.00	1284
	SUBTOTAL	6925
RAMP B		
29+99.00	32+77.00	670
35+14.00	35+88.00	165
	SUBTOTAL	835
RAMP C		
46+75.00	49+53.00	618
	SUBTOTAL	618
	TOTAL	8378

SAND BLANKET LIMITS ARE PARALLEL TO THE ABUTMENT ON END SLOPE SIDE. THE STATIONS SHOWN ARE AT CENTERLINE.



WICK DRAIN / UNDERDRAIN DETAIL

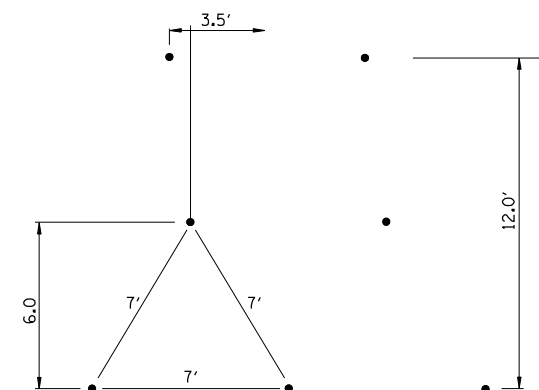
PLAN VIEW

N.T.S.

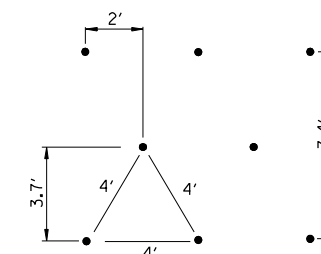
NOTE:

GAP WICK DRAIN AT PIPE CULVERTS  
LIMITS OF 4' SPACING VARIES AT SN 084-0513 ABUTMENTS. SEE TABLE

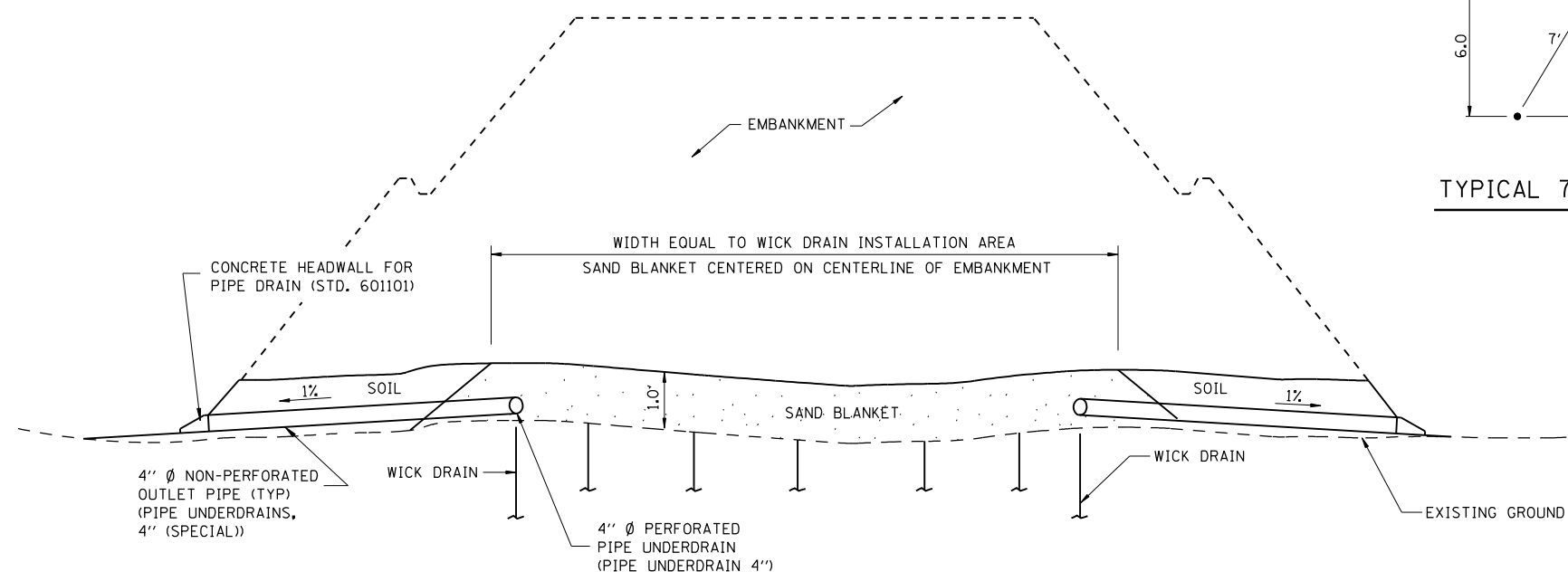
- \* 4 FT TRIANGULAR SPACING LIMITS ARE PARALLEL TO ABUTMENT SKEW.
- \*\* VERTICAL DRAIN ROWS ARE PARALLEL TO ROADWAY.
- \*\*\* CONNECT TO PROPOSED CULVERT.



TYPICAL 7' TRIANGULAR SPACING



TYPICAL 4' TRIANGULAR SPACING



SECTION A-A

NOTE:

BORING DATA AT WICK DRAIN LOCATIONS IS INCLUDED IN THE PLAN SHEETS FOR EACH STRUCTURE. ADDITIONAL BORING DATA IS AVAILABLE IN THE PROJECT GEOTECHNICAL REPORT. SEE THE SPECIAL PROVISION FOR GEOTECHNICAL DATA.

SAND BLANKET LIMITS SHALL BE EQUAL TO WICK DRAIN LIMITS. PIPE DRAINS MAY BE INSTALLED FOLLOWING PLACEMENT OF SAND AND SOIL MATERIALS TO PREVENT PIPE DAMAGE. ALL PIPE SHALL BE SLOPED TO DRAIN AND FIT FIELD CONDITIONS.

REVISIONS	
NAME	DATE

ILLINOIS DEPARTMENT OF TRANSPORTATION  
WICK DRAIN & UNDERDRAIN DETAILS  
FAI-72, MACARTHUR BLVD  
SEC NO. 02-00382-02-PV  
SEC NO. (84-9-4)A,HBK,BY,BY-1  
SANGAMON COUNTY, ILLINOIS

SCALE: VERT. HORIZ. DATE 12/16/2006 DRAWN BY CLG CHECKED BY JAD

LAYOUT	CLG	08/05/06
DRAWN	CLG	08/05/06
REVIEWED	JAD/JMW	08/05/06