

FAU ROUTE	SECTION	COUNTY	TOTAL SHEETS	SHEET NO.
8071	*	SANGAMON	559	192
STA.		TO STA.		
FED. ROAD DIST. NO.		ILLINOIS FED. AID PROJECT		
(84-9-4)A,HBK,BY,BY-1 * 02-00382-02-PV				

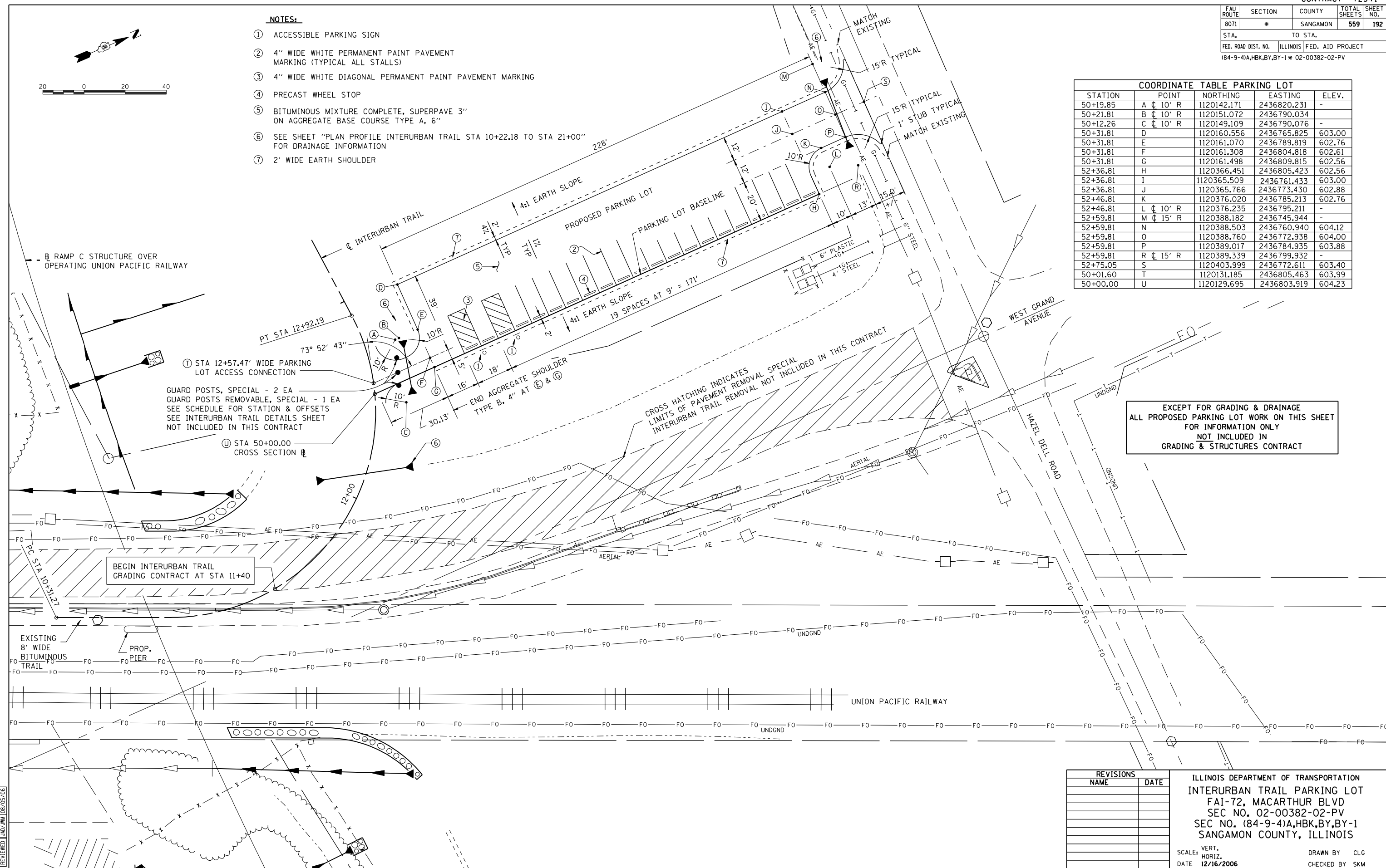
- NOTES:**
- 1 ACCESSIBLE PARKING SIGN
 - 2 4" WIDE WHITE PERMANENT PAINT PAVEMENT MARKING (TYPICAL ALL STALLS)
 - 3 4" WIDE WHITE DIAGONAL PERMANENT PAINT PAVEMENT MARKING
 - 4 PRECAST WHEEL STOP
 - 5 BITUMINOUS MIXTURE COMPLETE, SUPERPAVE 3" ON AGGREGATE BASE COURSE TYPE A, 6"
 - 6 SEE SHEET "PLAN PROFILE INTERURBAN TRAIL STA 10+22.18 TO STA 21+00" FOR DRAINAGE INFORMATION
 - 7 2' WIDE EARTH SHOULDER



COORDINATE TABLE PARKING LOT

STATION	POINT	NORTHING	EASTING	ELEV.
50+19.85	A C 10' R	1120142.171	2436820.231	-
50+21.81	B C 10' R	1120151.072	2436790.034	-
50+12.26	C C 10' R	1120149.109	2436790.076	-
50+31.81	D	1120160.556	2436765.825	603.00
50+31.81	E	1120161.070	2436789.819	602.76
50+31.81	F	1120161.308	2436804.818	602.61
50+31.81	G	1120161.498	2436809.815	602.56
52+36.81	H	1120366.451	2436805.423	602.56
52+36.81	I	1120365.509	2436761.433	603.00
52+36.81	J	1120365.766	2436773.430	602.88
52+46.81	K	1120376.020	2436785.213	602.76
52+46.81	L C 10' R	1120376.235	2436795.211	-
52+59.81	M C 15' R	1120388.182	2436745.944	-
52+59.81	N	1120388.503	2436760.940	604.12
52+59.81	O	1120388.760	2436772.938	604.00
52+59.81	P	1120389.017	2436784.935	603.88
52+59.81	R C 15' R	1120389.339	2436799.932	-
52+75.05	S	1120403.999	2436772.611	603.40
50+01.60	T	1120131.185	2436805.463	603.99
50+00.00	U	1120129.695	2436803.919	604.23

© Copyright Hanson Professional Services Inc. SMS_YEARS
HANSON



12/16/2006
 \$FILES
 LAYOUT CLG 08/05/06
 DRAWN CLG 08/05/06
 REVIEWED JMD/JMD 08/05/06

REVISIONS

NAME	DATE

ILLINOIS DEPARTMENT OF TRANSPORTATION
 INTERURBAN TRAIL PARKING LOT
 FAI-72, MACARTHUR BLVD
 SEC NO. 02-00382-02-PV
 SEC NO. (84-9-4)A,HBK,BY,BY-1
 SANGAMON COUNTY, ILLINOIS
 SCALE: VERT. DATE 12/16/2006
 DRAWN BY CLG
 CHECKED BY SKM