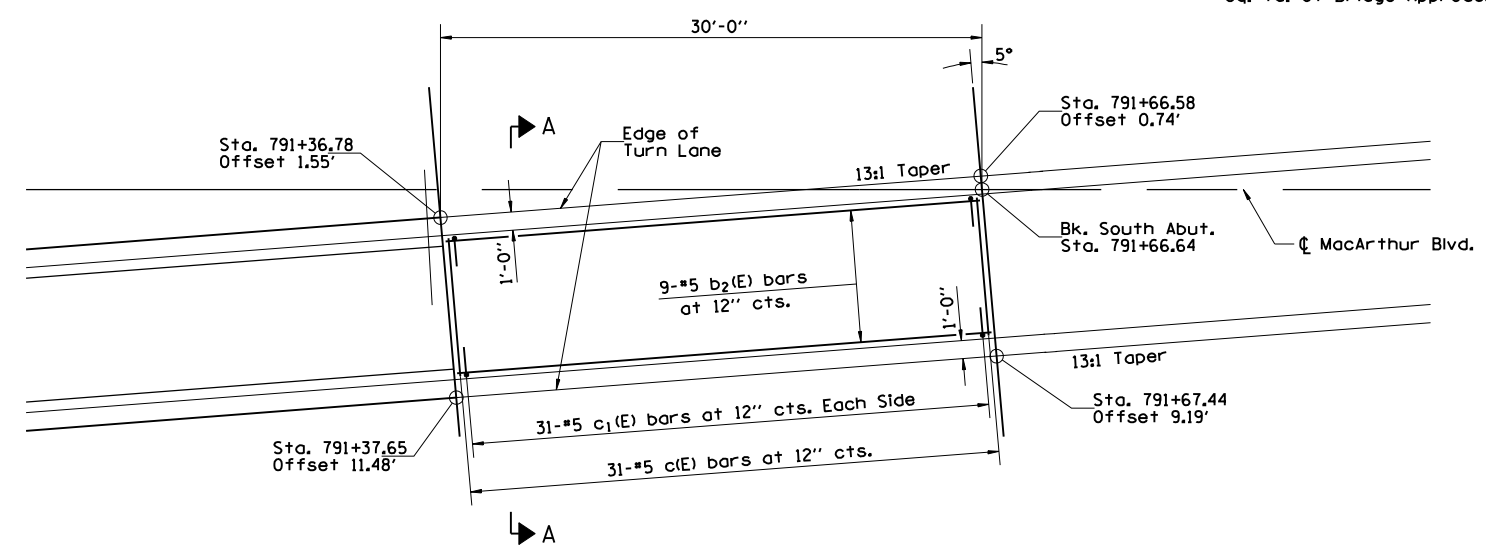
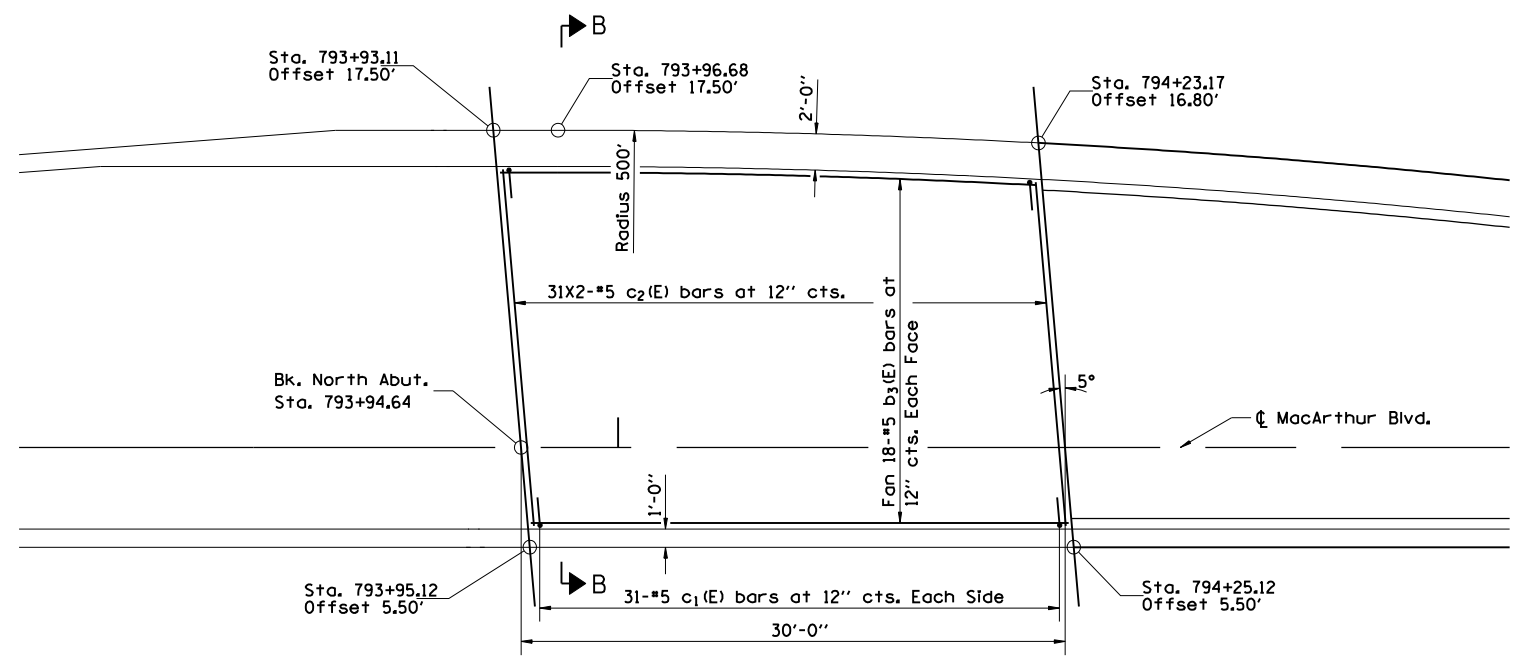
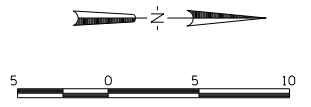


FAU ROUTE	SECTION	COUNTY	TOTAL SHEETS	SHEET NO.
8071	*	SANGAMON	559	198
STA.		TO STA.		
FED. ROAD DIST. NO.	ILLINOIS	FED. AID PROJECT		
* (84-9-4)HBK,BY,BY-1				

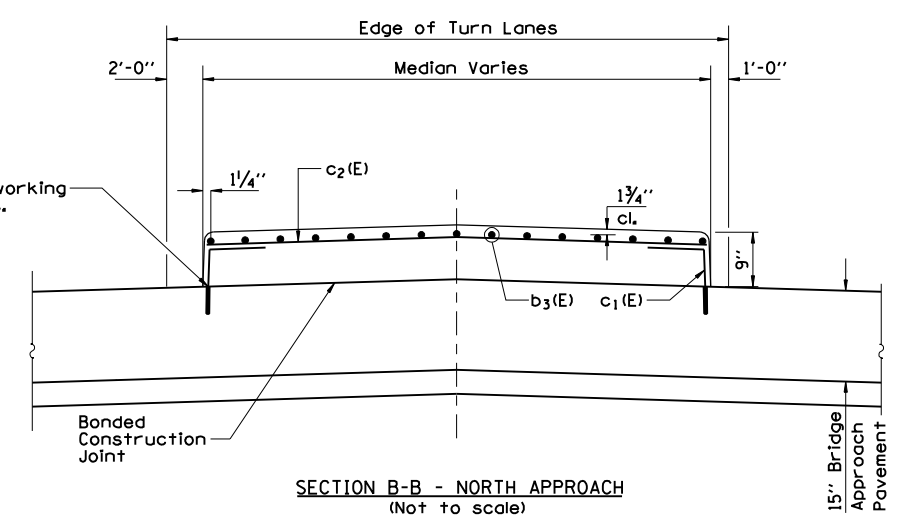
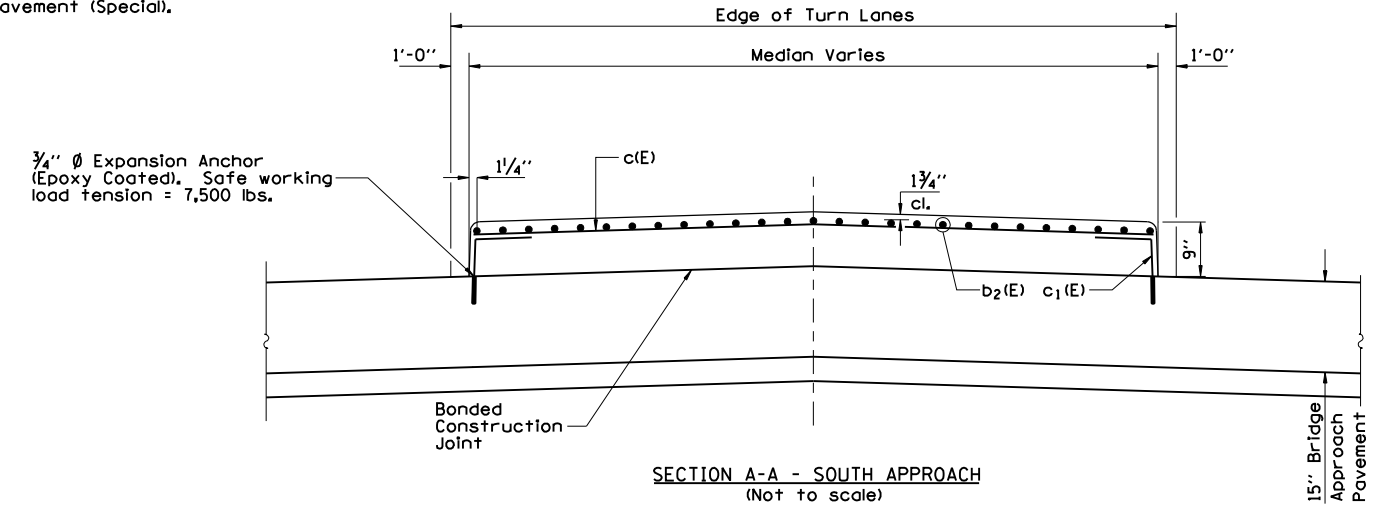
Note:
 Reinforcement bars designated (E) shall be Epoxy Coated.
 Bars indicated 31x2-#5 etc. indicates 31 lines of bars with 2 lengths per line.
 For Bridge Approach Pavement Details See Std. 420401.
 All concrete, reinforcement, expansion anchors, and other items which are cast into the Bridge Approach Pavement Median, shall be included in the contract unit price per Sq. Yd. of Bridge Approach Pavement (Special).



MEDIAN PLAN - SOUTH APPROACH
 MACARTHUR BLVD, OVER I-72



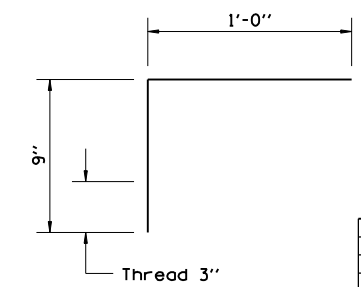
MEDIAN PLAN - NORTH APPROACH
 MACARTHUR BLVD, OVER I-72



BILL OF MATERIAL

Bar	No.	Size	Length	Shape
b ₂ (E)	9	#5	29'-6"	—
b ₃ (E)	18	#5	29'-8"	—
c(E)	31	#5	29'-4"	—
c ₁ (E)	124	#5	1'-9"	┌
c ₂ (E)	62	#5	11'-0"	—

MIN. BAR LAPS
 #5 bar 2'-2"



WORK ON THIS SHEET FOR INFORMATION ONLY NOT INCLUDED IN GRADING & STRUCTURES CONTRACT

REVISIONS

NAME	DATE

ILLINOIS DEPARTMENT OF TRANSPORTATION
 BRIDGE APPROACH PAVEMENT
 MEDIAN DETAILS -1
 FAI-72, MACARTHUR BLVD
 SEC NO. (84-9-4)A,HBK,BY,BY-1
 SANGAMON COUNTY, ILLINOIS
 SCALE: VERT. HORIZ.
 DATE: 12/16/2006
 DRAWN BY: _____
 CHECKED BY: _____



12/16/2006 \$FILES\$
 LAYOUT: CLG 08/05/06
 DRAWN: CLG 08/05/06
 REVIEWED: JMD/JMD 08/05/06