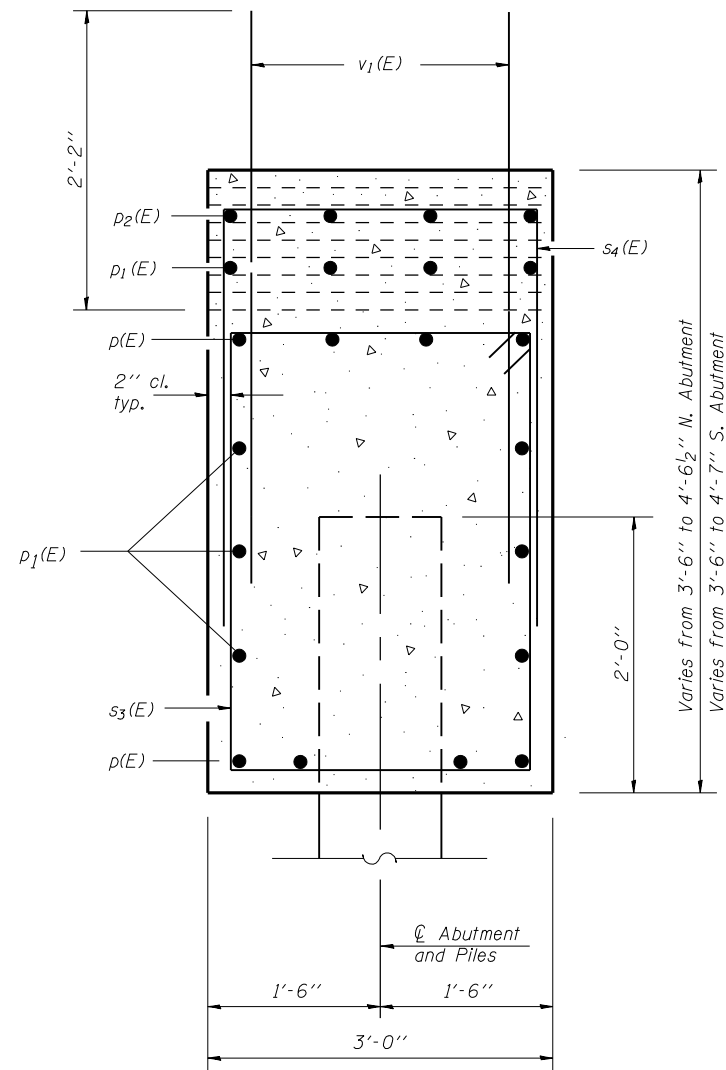
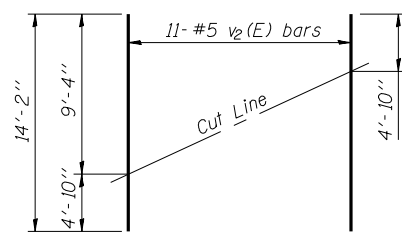


PILE ENCASEMENT DETAIL



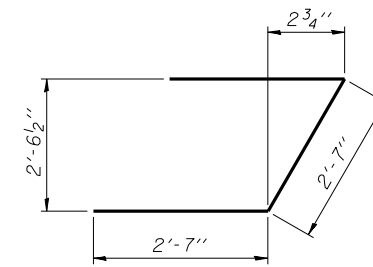
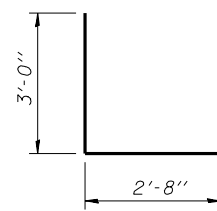
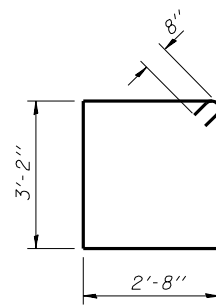
**BILL OF MATERIAL
NORTH AND SOUTH ABUTMENT**

Bar	No.	Size	Length	Shape
$h(E)$	120	#7	14'-6"	—
$p(E)$	64	#8	30'-9"	—
$p_1(E)$	52	#6	37'-9"	—
$p_2(E)$	8	#6	36'-2"	—
$s_3(E)$	284	#6	13'-0"	□
$s_4(E)$	152	#5	8'-8"	□
$u(E)$	16	#6	7'-9"	┘
$v_1(E)$	404	#5	4'-4"	—
$v_2(E)$	44	#5	14'-2"	—
Structure Excavation		Cu. Yd.	621	
Concrete Structures		Cu. Yd.	112.9	
Reinforcement Bars, Epoxy Coated		Pound	21780	
Furnishing Steel Piles HP12x74		Lin. Ft.	2244	
Driving Piles		Lin. Ft.	2244	
Test Pile Steel HP12x74		Each	2	
Concrete Encasement		Cu. Yd.	12.6	



FIELD CUTTING DIAGRAM

Order $v_2(E)$ full length. Cut as shown and use remainder of bars in opposite face.



LAYOUT
DRAWN
REVIEWED

MMW 10/22/04
DAP 01/04/05
JMM 02/02/05

\$FILE\$
12/16/2006

Corporate License Number 184-001-084

**NORTH & SOUTH ABUTMENT DETAILS
MACARTHUR BLVD. OVER F.A.I. 72
SECTION (84-9-4)A, HBK, BY, BY-1
SANGAMON COUNTY
STATION 792+77.64
STRUCTURE NUMBER 084-0513**

© Copyright Hanson Professional Services Inc. \$MS_YEAR\$



JOB#
96S2002B

DATE
02/02/05