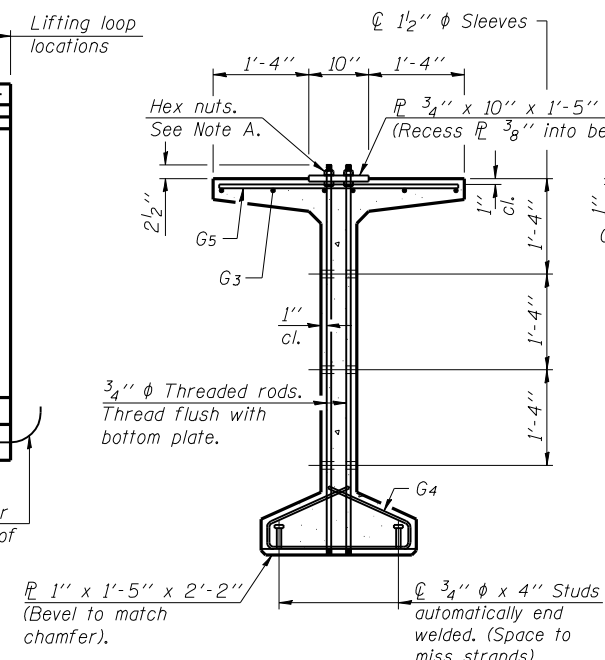


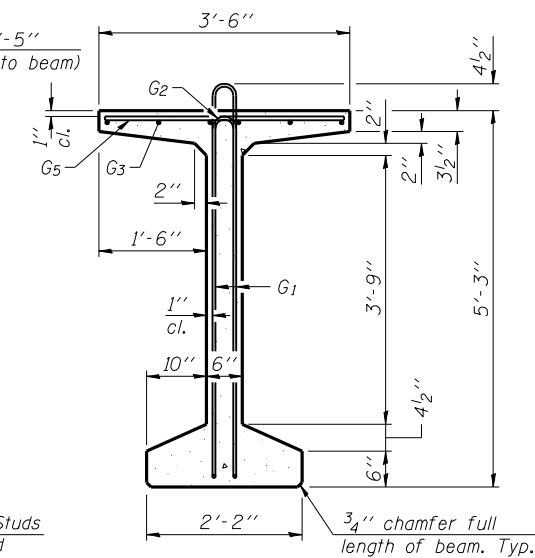
ELEVATION OF BEAM
(Showing reinforcement & dimensions)

* 4 spaces at 3 1/4" = 1'-1".
** 5-3/4" φ threaded dowel rods at 3 1/4" cts., each face.

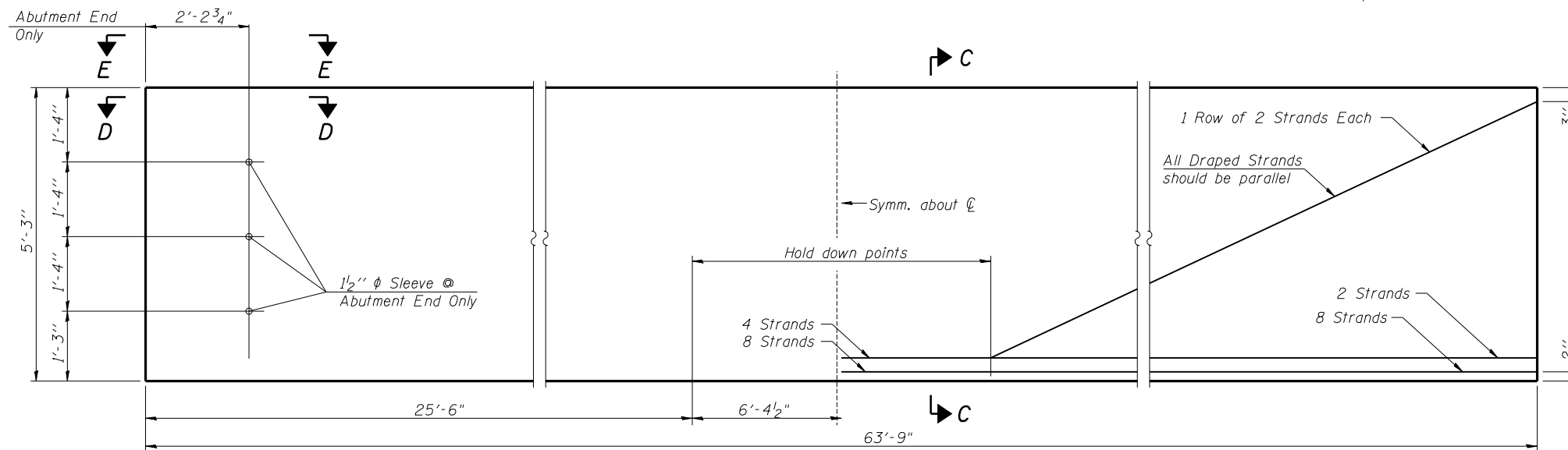
Note A:
Hex nuts (top and bottom) with lock washers (top). Only tighten sufficiently to compress lock washers.



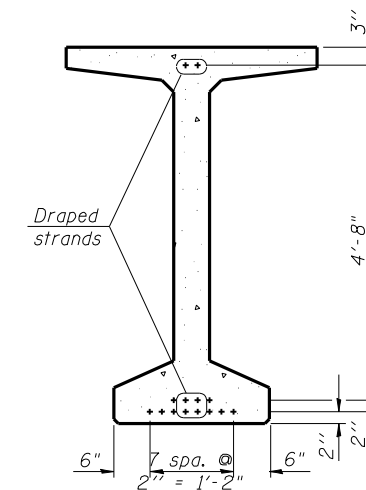
SECTION A-A



SECTION B-B



ELEVATION OF BEAM
(Showing prestressing steel)



SECTION C-C

**BAR LIST
ONE BEAM ONLY**

Bar	No.	Size	Length	Shape
G ₁	95	#4	11'-11"	⊏
G ₂	16	#4	6'-2"	⊏
G ₃	18	#6	23'-0"	⊏
G ₄	56	#3	4'-11"	⊏
G ₅	86	#5	3'-4"	⊏
G ₆	3	#8	3'-9"	⊏

Notes:
See sheet 16 of 27 for additional details and Bill of Material.
Required release strength, f'ci, shall be 5000 psi.

Corporate License Number 184-001-084

63" PPC BULB T-BEAM - SPAN #1
MACARTHUR BLVD. OVER N.S. R.R.
SECTION 02-00382-02-PV
SANGAMON COUNTY
STATION 800+69.78
STRUCTURE NUMBER 084-0512

© Copyright Hanson Professional Services Inc. \$MS_YEAR\$



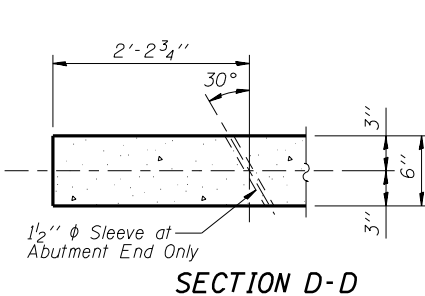
JOB#

96S2002B

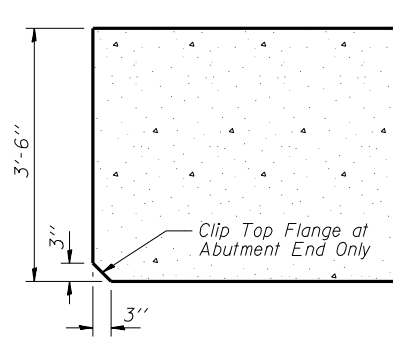
DATE

10/10/06

MMW 10/10/06
DAP 10/10/06
JMM 10/12/06
LAYOUT
DRAWN
REVIEWED



SECTION D-D



SECTION E-E