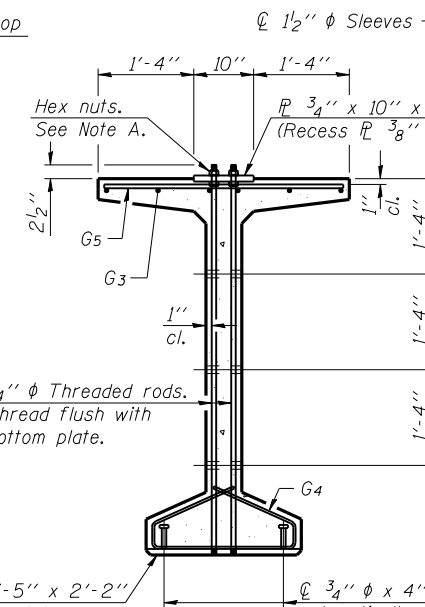


ELEVATION OF BEAM
(Showing reinforcement & dimensions)

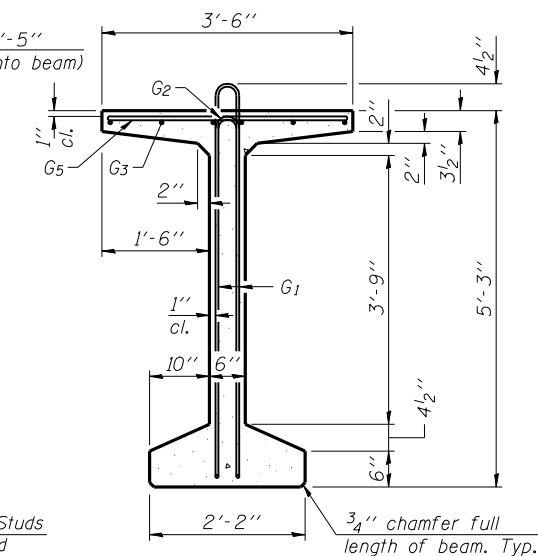
* 4 spaces at 3 1/4" = 1'-1".
** 5-3/4" φ threaded dowel rods at 3 1/4" cts., each face.

Note A:
Hex nuts (top and bottom) with lock washers (top). Only tighten sufficiently to compress lock washers.

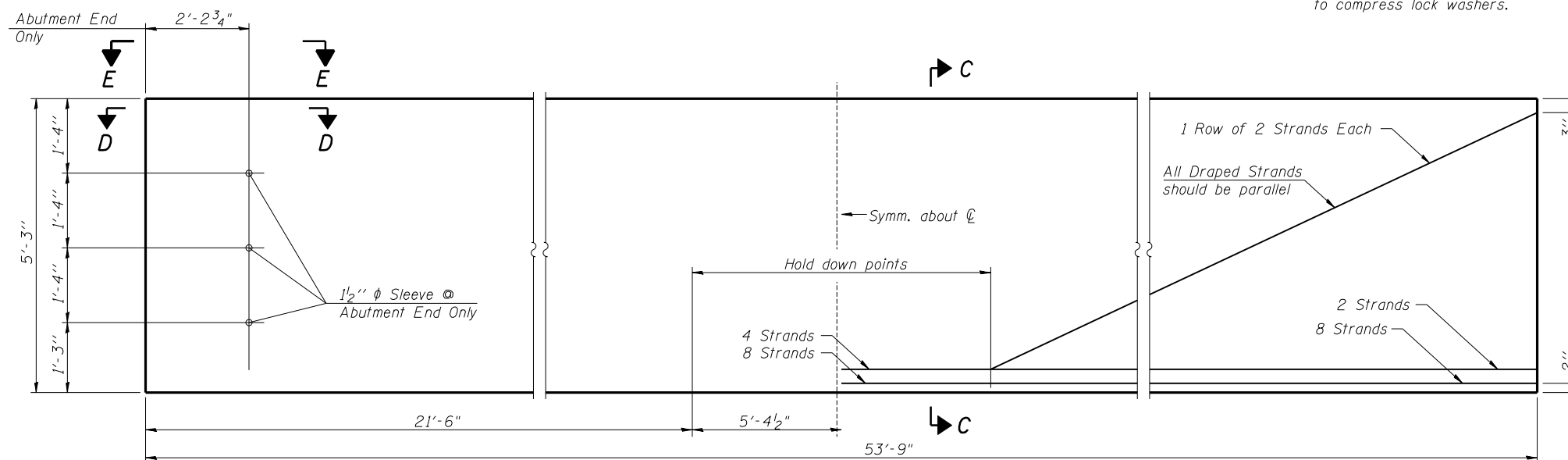
3- #8 G6 bars at pier only. (See sheet 16 of 27 for details).
1 1/2" φ Sleeves
Hex nuts. See Note A.
3/4" x 10" x 1'-5" (Recess 3/8" into beam)
3/4" φ Threaded rods. Thread flush with bottom plate.
φ 3/4" φ x 4" Studs (Bevel to match chamfer). automatically end welded. (Space to miss strands).



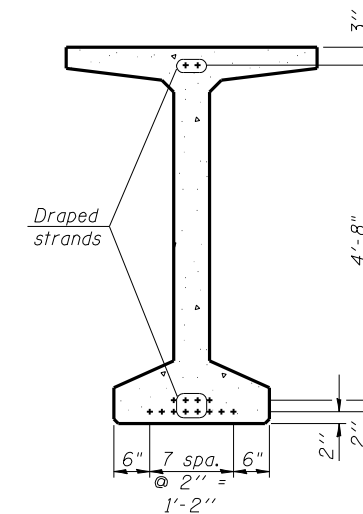
SECTION A-A



SECTION B-B



ELEVATION OF BEAM
(Showing prestressing steel)



SECTION C-C

**BAR LIST
ONE BEAM ONLY**

Bar	No.	Size	Length	Shape
G1	77	#4	11'-11"	⌒
G2	16	#4	6'-2"	⌒
G3	12	#6	28'-3"	⌒
G4	56	#3	4'-11"	⌒
G5	72	#5	3'-4"	⌒
G6	3	#8	3'-9"	⌒

Notes:
See sheet 16 of 27 for additional details and Bill of Material.
Required release strength, f'ci, shall be 5000 psi.

Corporate License Number 184-001-084

**63" PPC BULB T-BEAM - SPAN #3
MACARTHUR BLVD. OVER N.S. R.R.
SECTION 02-00382-02-PV
SANGAMON COUNTY
STATION 800+69.78
STRUCTURE NUMBER 084-0512**

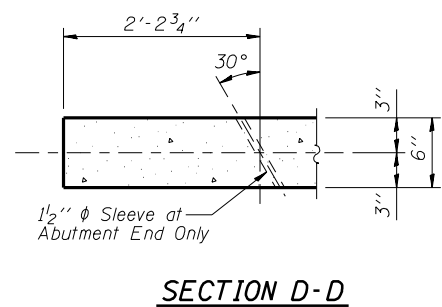
© Copyright Hanson Professional Services Inc. \$MS_YEAR\$



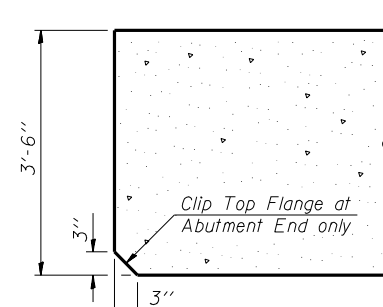
JOB# 96S2002B

DATE 10/10/06

MMW 10/10/06
DAP 10/10/06
REVIEWED JMM 10/12/06
\$FILE\$ 12/16/2006



SECTION D-D



SECTION E-E