

PILE DATA

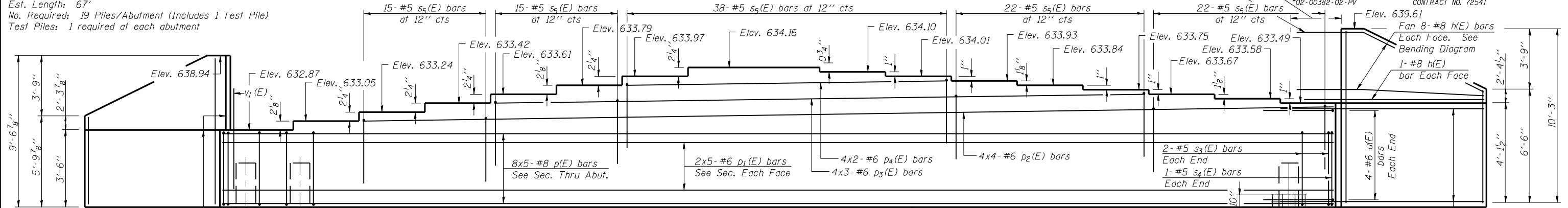
Type: Steel Piles HP12x53
 Nominal Required Bearing: 419 kips
 Allowable Resistance Available: 125 kips
 Est. Length: 67'
 No. Required: 19 Piles/Abutment (Includes 1 Test Pile)
 Test Piles: 1 required at each abutment

Notes: Pour steps monolithically with cap.
 Reinforcement bars designated (E)
 shall be epoxy coated.

Bend h(E) bars Front Face in field
 as required to miss beam and pile

ROUTE NO.	SECTION	COUNTY	STATE SHEETS	SHEET NO.
F.A.U. 8071	#	SANGAMON	559	244
FED. ROAD DIST. NO. 7		ILLINOIS	FED. AID PROJECT	
#02-00382-02-PV		CONTRACT NO. 72541		

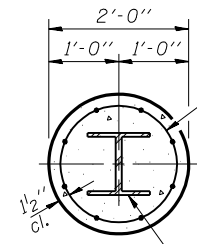
SHEET NO. 18
 27 SHEETS



BENDING DIAGRAM

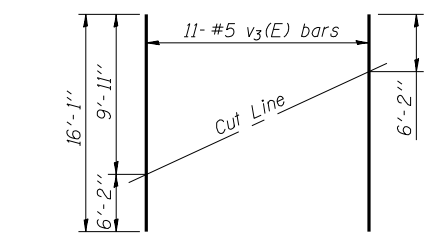
h(E) Bar Order	Dimensions		
	a	b	c
h(E)-1	4'-8"	9'-7"	3'-8 1/2"
h(E)-2	4'-10"	9'-5"	3'-3"
h(E)-3	5'-0"	9'-3"	2'-9 1/2"
h(E)-4	5'-1"	9'-2"	2'-3 1/2"
h(E)-5	5'-2"	9'-1"	1'-10"
h(E)-6	5'-3"	9'-0"	1'-4 1/2"
h(E)-7	5'-4"	8'-11"	11"
h(E)-8	5'-4"	8'-11"	5 1/2"

Bending table for h(E) bars. Bars shall be placed in wing using numerical order shown above starting at the top of wing.



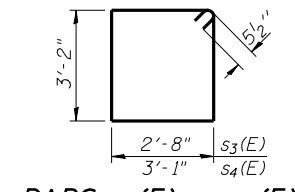
PILE ENCASEMENT DETAIL

ELEVATION
 (Looking South)

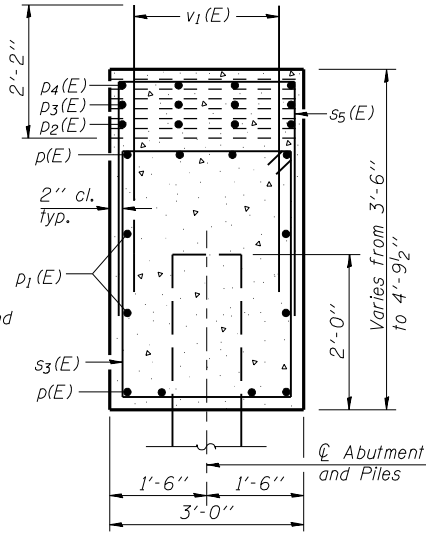


FIELD CUTTING DIAGRAM

Order v3(E) full length. Cut as shown and use remainder of bars in opposite face.

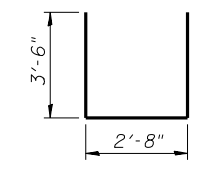


BARS s3(E) or s4(E)

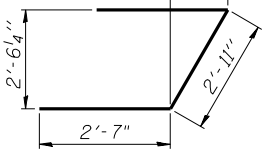


SEC. THRU ABUT.

BAR s5(E)



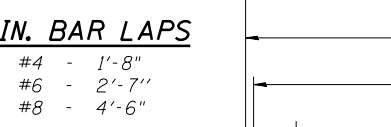
BAR u(E)



BILL OF MATERIAL

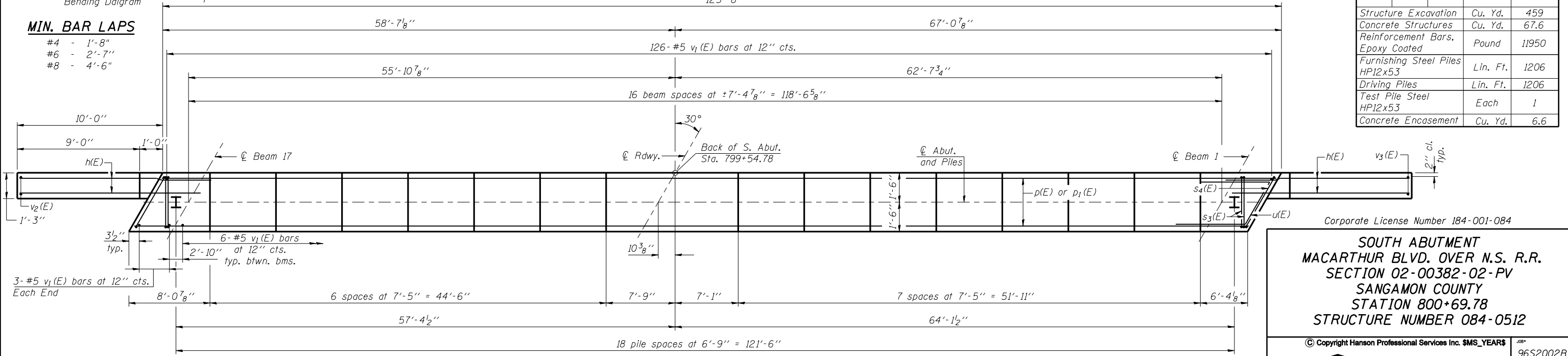
Bar	No.	Size	Length	Shape
h(E)	60	#8	14'-3"	—
p(E)	40	#8	28'-9"	—
p1(E)	20	#6	27'-3"	—
p2(E)	16	#6	30'-0"	—
p3(E)	12	#6	26'-5"	—
p4(E)	8	#6	19'-9"	—
s3(E)	130	#5	12'-7"	□
s4(E)	2	#5	13'-5"	□
s5(E)	112	#5	9'-8"	□
u(E)	8	#6	8'-1"	┘
v1(E)	228	#5	4'-4"	—
v2(E)	11	#5	14'-7"	—
v3(E)	11	#5	16'-1"	—
Structure Excavation	Cu. Yd.	459		
Concrete Structures	Cu. Yd.	67.6		
Reinforcement Bars, Epoxy Coated	Pound	11950		
Furnishing Steel Piles HP12x53	Lin. Ft.	1206		
Driving Piles	Lin. Ft.	1206		
Test Pile Steel HP12x53	Each	1		
Concrete Encasement	Cu. Yd.	6.6		

BAR h(E)
 Bending Diagram



MIN. BAR LAPS

- #4 - 1'-8"
- #6 - 2'-7"
- #8 - 4'-6"



PLAN

SOUTH ABUTMENT
 MACARTHUR BLVD. OVER N.S. R.R.
 SECTION 02-00382-02-PV
 SANGAMON COUNTY
 STATION 800+69.78
 STRUCTURE NUMBER 084-0512

Corporate License Number 184-001-084
 © Copyright Hanson Professional Services Inc. \$MS_YEAR\$ JOB# 96S2002B
 DATE 10/30/05

LAYOUT	MM	06/27/03
DRAWN	DAP	01/04/05
REVIEWED	JMM	02/24/05