

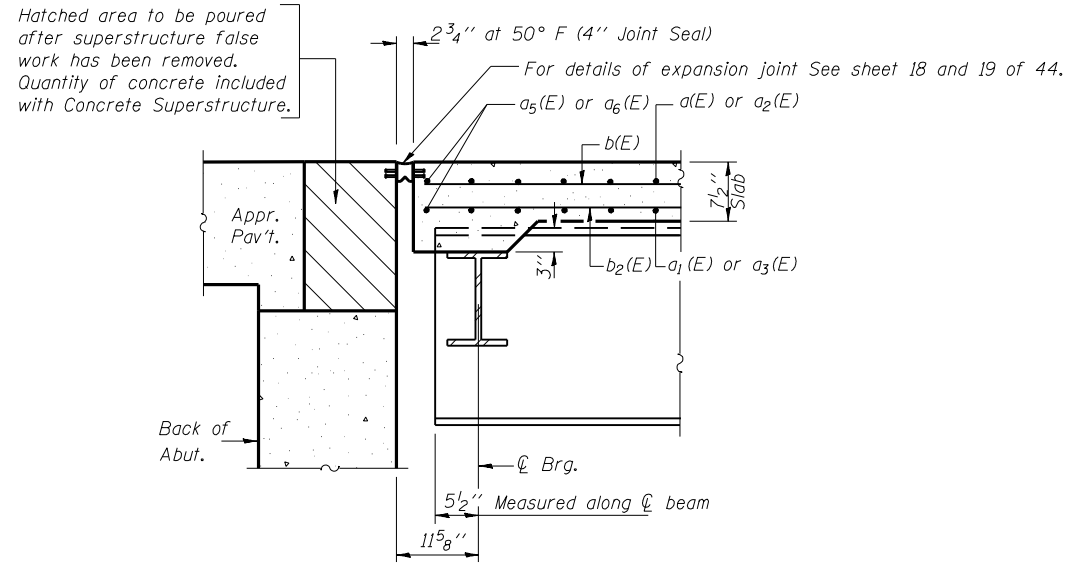
EASTBOUND SUPERSTRUCTURE BILL OF MATERIAL

Bar	No.	Size	Length	Shape
a(E)	378	#5	23'-0"	—
a ₁ (E)	265	#5	22'-6"	—
a ₂ (E)	380	#5	19'-1"	—
a ₃ (E)	266	#5	18'-7"	—
a ₄ (E)	397	#6	4'-6"	—
a ₅ (E)	8	#5	14'-9"	—
a ₆ (E)	8	#5	12'-3"	—
a ₇ (E)	16	#5	1'-6"	—
a ₈ (E)	6	#5	18'-8"	—
a ₁₃ (E)	9	#5	19'-2"	—
a ₁₄ (E)	8	#5	18'-6"	—
a ₁₅ (E)	5	#5	19'-11"	—
a ₁₆ (E)	9	#5	23'-11"	—
a ₁₇ (E)	6	#5	23'-5"	—
a ₁₈ (E)	11	#5	22'-10"	—
a ₁₉ (E)	7	#5	24'-6"	—
b(E)	384	#5	31'-3"	—
b ₁ (E)	132	#6	38'-6"	—
b ₂ (E)	378	#5	28'-0"	—
d(E)	509	#5	3'-0"	—
d ₁ (E)	509	#5	2'-5"	┘
d ₂ (E)	509	#4	3'-0"	┘
d ₃ (E)	509	#4	3'-7"	┘
e ₁ (E)	32	#8	26'-0"	—
e ₂ (E)	32	#5	24'-9"	—
e ₃ (E)	72	#4	7'-8"	—
e ₄ (E)	24	#8	7'-8"	—
e ₅ (E)	24	#5	7'-8"	—
e ₇ (E)	54	#4	15'-3"	—
e ₈ (E)	18	#4	14'-4"	—
e ₉ (E)	36	#4	14'-8"	—
e ₁₀ (E)	36	#4	15'-1"	—
Concrete Superstructure		Cu. Yds.	323.6	
Reinforcement Bars (Epoxy Coated)		Lbs.	74150	

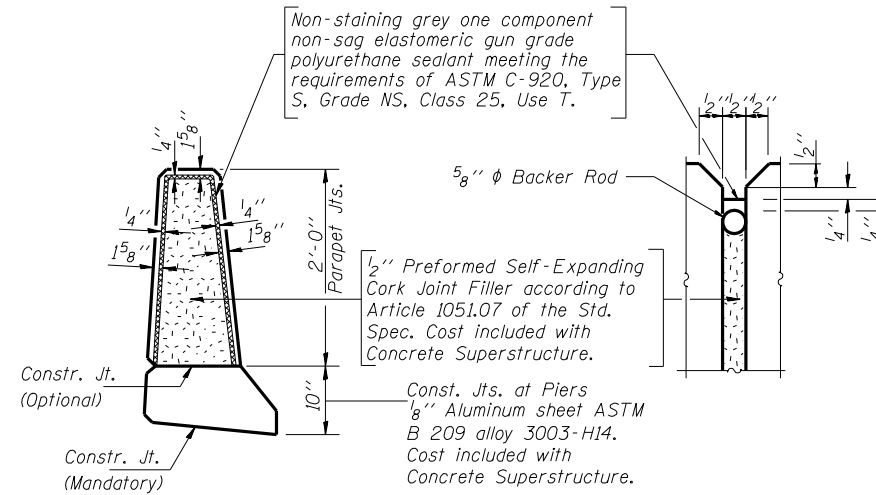
Reinforcement bars designated (E) shall be epoxy coated. Cut longitudinal reinforcement to clear drainage scuppers.

MIN. BAR LAPS

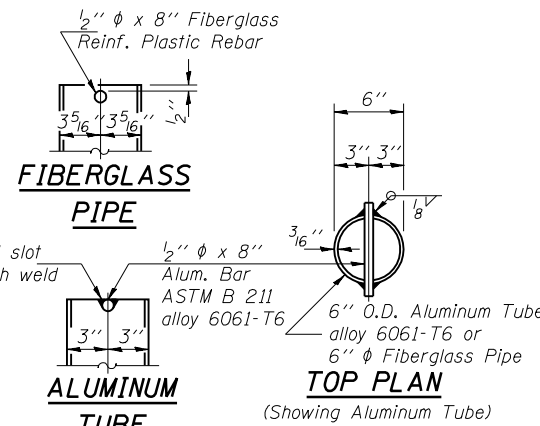
- #5 Bar - 2'-2"
- #6 Bar - 2'-7"
- #8 Bar - 4'-6"



SECTION A-A
(At Rt. <s to Bk. Abutment)



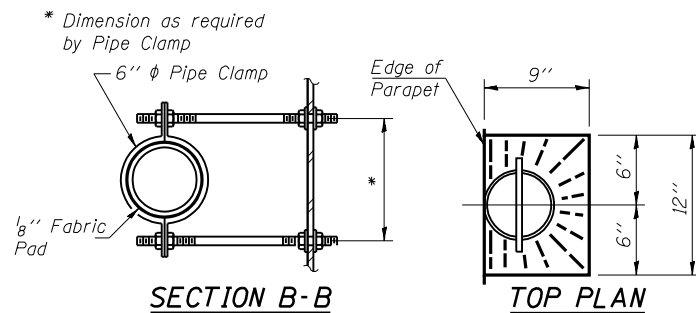
PARAPET JOINT DETAILS



FIBERGLASS PIPE

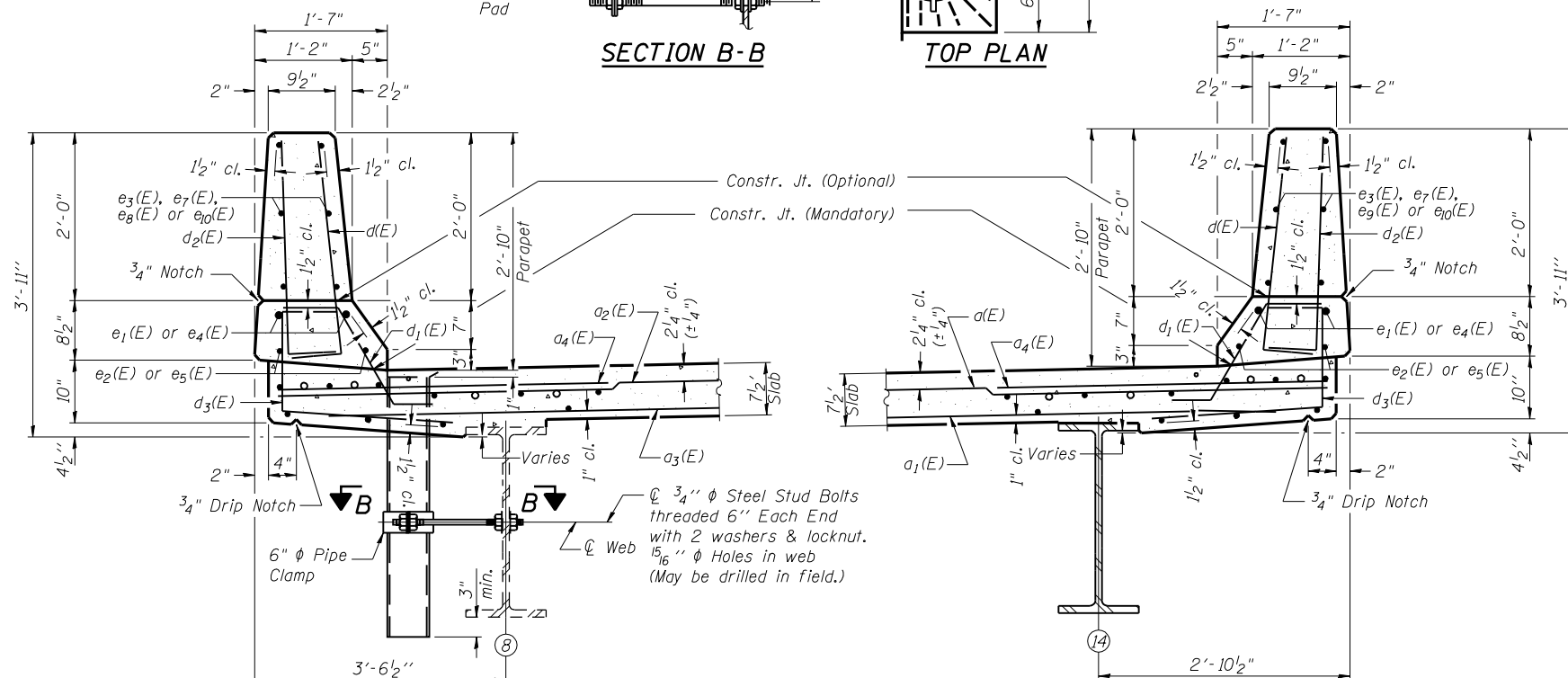
ALUMINUM TUBE

TOP PLAN
(Showing Aluminum Tube)



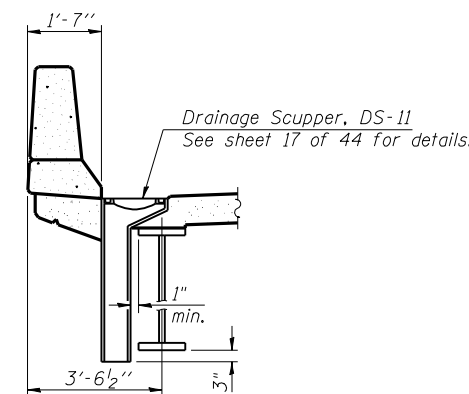
SECTION B-B

TOP PLAN

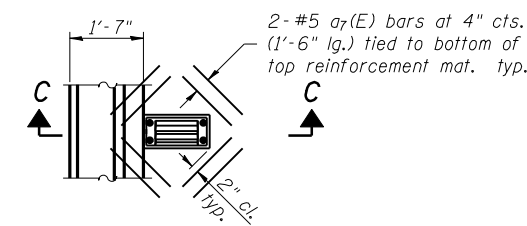


SECTION THRU NORTH PARAPET
(Looking East Upstation)

SECTION THRU SOUTH PARAPET
(Looking East Upstation)



SECTION C-C



PLAN

Hatched area to be poured after superstructure false work has been removed. Quantity of concrete included with Concrete Superstructure.

Non-staining grey one component non-sag elastomeric gun grade polyurethane sealant meeting the requirements of ASTM C-920, Type S, Grade NS, Class 25, Use T.

1/2" Preformed Self-Expanding Cork Joint Filler according to Article 1051.07 of the Std. Spec. Cost included with Concrete Superstructure.

Const. Jts. at Piers 1/8" Aluminum sheet ASTM B 209 alloy 3003-H14. Cost included with Concrete Superstructure.

* Dimension as required by Pipe Clamp

Drainage Scupper, DS-11 See sheet 17 of 44 for details.

\$FILES 12/16/2006

LAYOUT	MM	06/27/03
DRAWN	DAP	07/17/03
REVIEWED	JMM	10/27/03

Corporate License Number 184-001-084
SUPERSTRUCTURE DETAILS- EASTBOUND
F.A.I. 72 OVER UNION PACIFIC RAILROAD
SECTION (84-9-4)A, HBK, BY, BY-1
SANGAMON COUNTY
STATION 608+51.98
STR NO. 084-0074 EB - 084-0075 WB

© Copyright Hanson Professional Services Inc. SMS_YEAR5



JOB# 96S2002B

DATE# 01/12/06