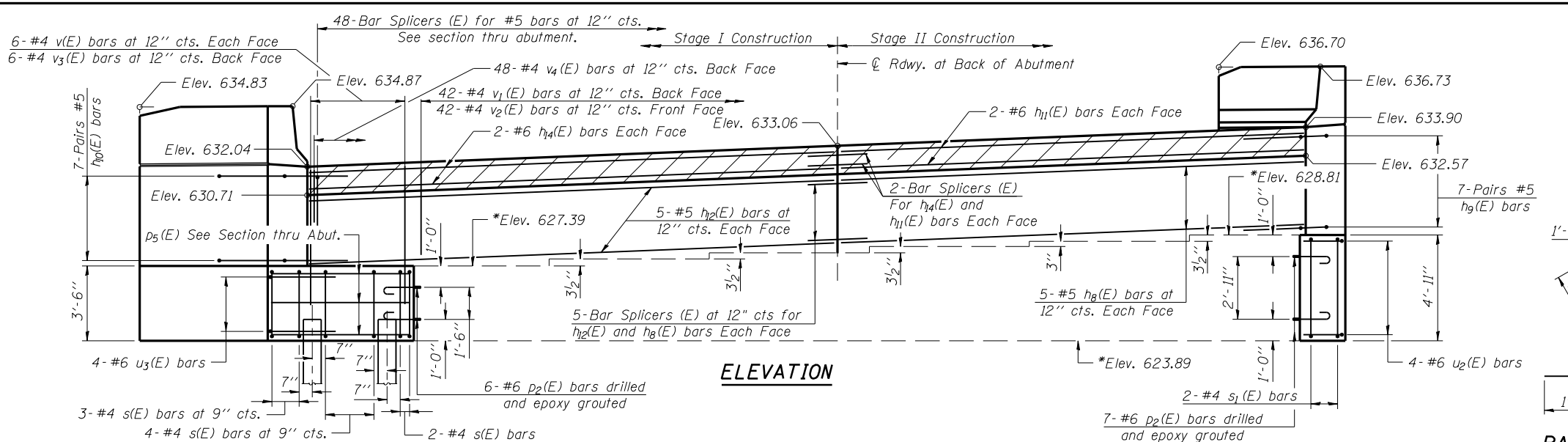


* (84-9-4)A, HBK, BY, BY-1 Contract No 72541

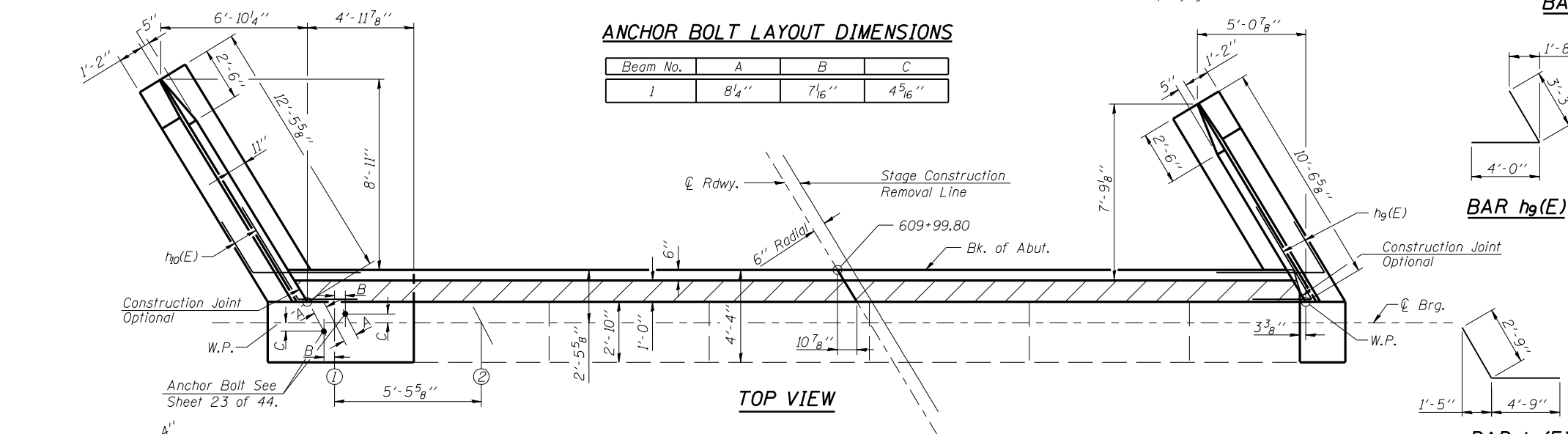
* Elevations given are from existing plans, and have been adjusted by deducting 0.69'. The comparison data is based on a survey of the existing bearing seats, and is subject to normal construction tolerance variations.



ELEVATION

ANCHOR BOLT LAYOUT DIMENSIONS

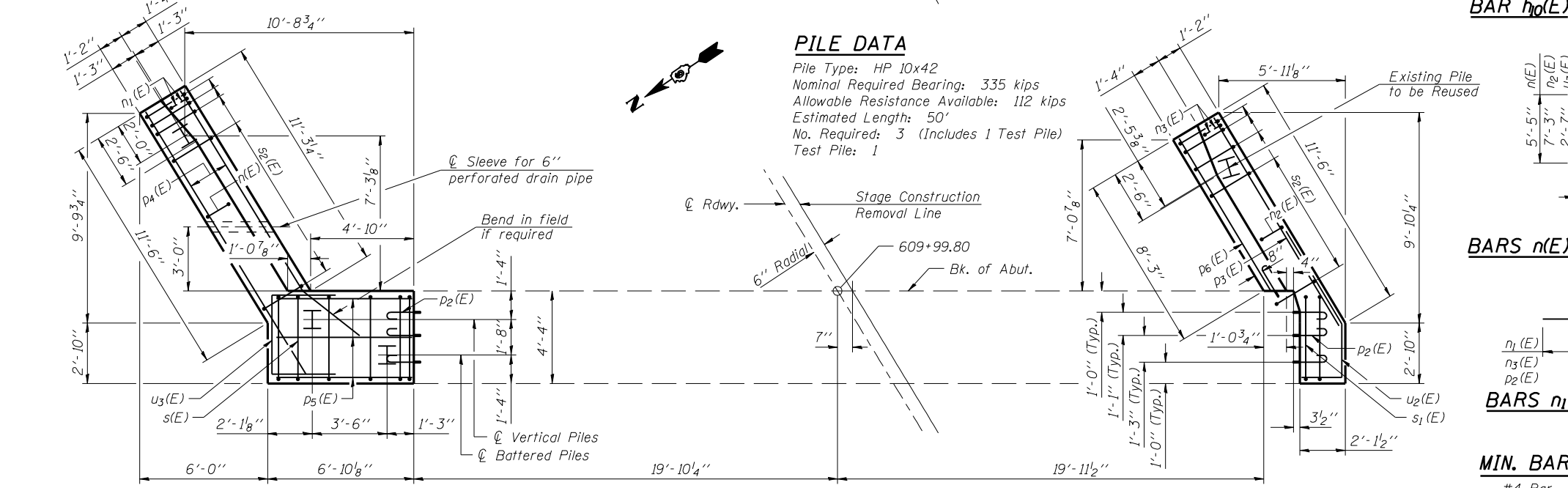
Beam No.	A	B	C
1	8 1/4"	7 1/6"	4 5/16"



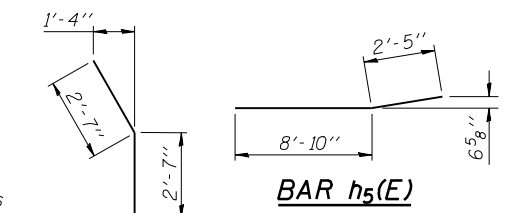
TOP VIEW

PILE DATA

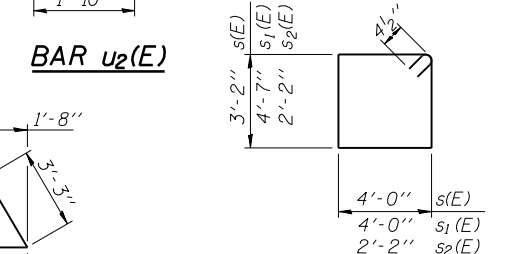
Pile Type: HP 10x42
Nominal Required Bearing: 335 kips
Allowable Resistance Available: 112 kips
Estimated Length: 50'
No. Required: 3 (Includes 1 Test Pile)
Test Pile: 1



PLAN-PILE CAP



BAR h5(E)



BAR u2(E)

BARS s(E), s1(E) & s2(E)

BAR h9(E)

BAR h10(E)

BAR v4(E)

BAR v6(E)

BARS n1(E), n2(E) & u3(E)

BAR v7(E)

BARS n1(E), n3(E) & p2(E)

MIN. BAR LAPS

- #4 Bar - 1'-8"
- #5 Bar - 2'-2"
- #6 Bar - 2'-7"
- #7 Bar - 3'-5"

BILL OF MATERIAL

Bar	No.	Size	Length	Shape
h4(E)	27	#4	11'-3"	—
h5(E)	19	#4	11'-3"	—
h8(E)	10	#5	20'-8"	—
h9(E)	14	#5	7'-3"	—
h10(E)	14	#5	7'-6"	—
h11(E)	4	#6	20'-8"	—
h12(E)	10	#5	25'-5"	—
h2(E)	4	#6	25'-5"	—
n(E)	10	#6	12'-1"	—
n1(E)	6	#6	5'-10"	—
n2(E)	10	#6	15'-9"	—
n3(E)	6	#6	8'-0"	—
p2(E)	13	#6	2'-10"	—
p3(E)	3	#7	11'-6"	—
p4(E)	6	#7	14'-6"	—
p5(E)	8	#7	6'-6"	—
p6(E)	3	#7	8'-0"	—
s(E)	9	#4	15'-1"	—
s1(E)	2	#4	17'-11"	—
s2(E)	23	#4	9'-5"	—
u2(E)	4	#6	7'-0"	—
u3(E)	4	#6	9'-1"	—
v1(E)	12	#4	6'-0"	—
v2(E)	42	#4	3'-7"	—
v3(E)	6	#4	3'-5"	—
v4(E)	48	#4	3'-1"	—
v5(E)	24	#6	7'-2"	—
v6(E)	6	#6	7'-2"	—
v7(E)	20	#6	7'-6"	—
Structure Excavation		Cu. Yd.	91	
Concrete Structures		Cu. Yd.	30.3	
Reinforcement Bars Epoxy Coated		Pound	3570	
Furnishing Steel Piles HP10x42		Lin. Ft.	100	
Driving Piles		Lin. Ft.	100	
Test Piles Steel HP10x42		Each	1	

Reinforcement Bars designated (E) shall be Epoxy Coated.
For details of Bar Splicers, see sheet 40 of 44.
Bars epoxy grouted shall have an embedment sufficient to obtain 1.25 x the yield strength of the reinforcing bar.
Drill holes for epoxy grouted bars to miss existing reinforcement.

Corporate License Number 184-001-084

WESTBOUND-EAST ABUTMENT
F.A.I. 72 OVER UNION PACIFIC RAILROAD
SECTION (84-9-4)A, HBK, BY, BY-1
SANGAMON COUNTY
STATION 608+51.98
STR NO. 084-0074 EB - 084-0075 WB

© Copyright Hanson Professional Services Inc. SMS_YEAR5



JOB# 96S2002B

DATE 01/12/06

LAYOUT: MMW 06/27/03
DRAWN: DAP 07/17/03
REVIEWED: JMM 10/27/03
\$FILES\$ 12/16/2006