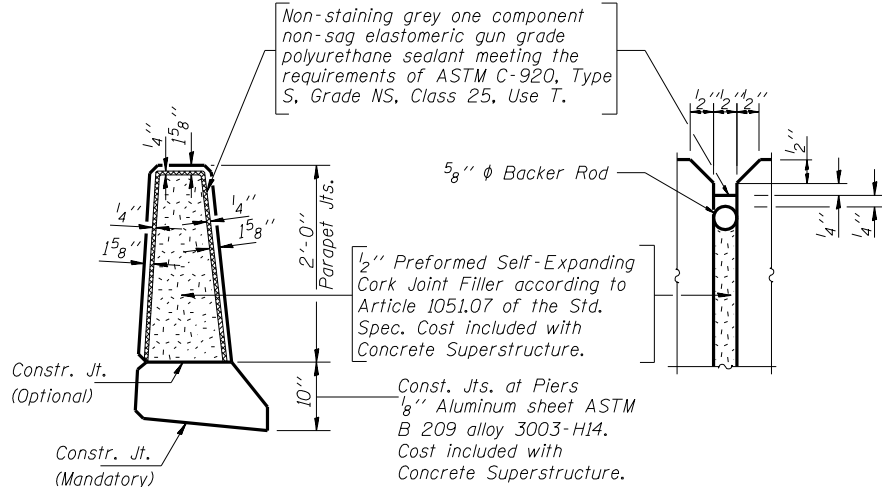


SECTION A-A

(At Rt. C/S to Bk. Abutment)

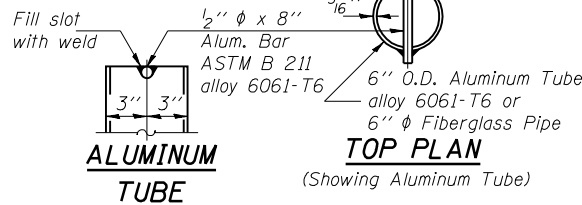
**Place $a_3(E)$ and $h(E)$ bars in back of anchor bolt as shown if required to maintain 1" cl. (+0-1/8"). Anchor bolts should be tied to $a_3(E)$ and $h(E)$ bars.



PARAPET JOINT DETAILS

1/2" ϕ x 8" Fiberglass Reinf. Plastic Rebar

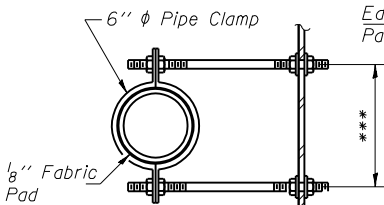
FIBERGLASS PIPE



TOP PLAN

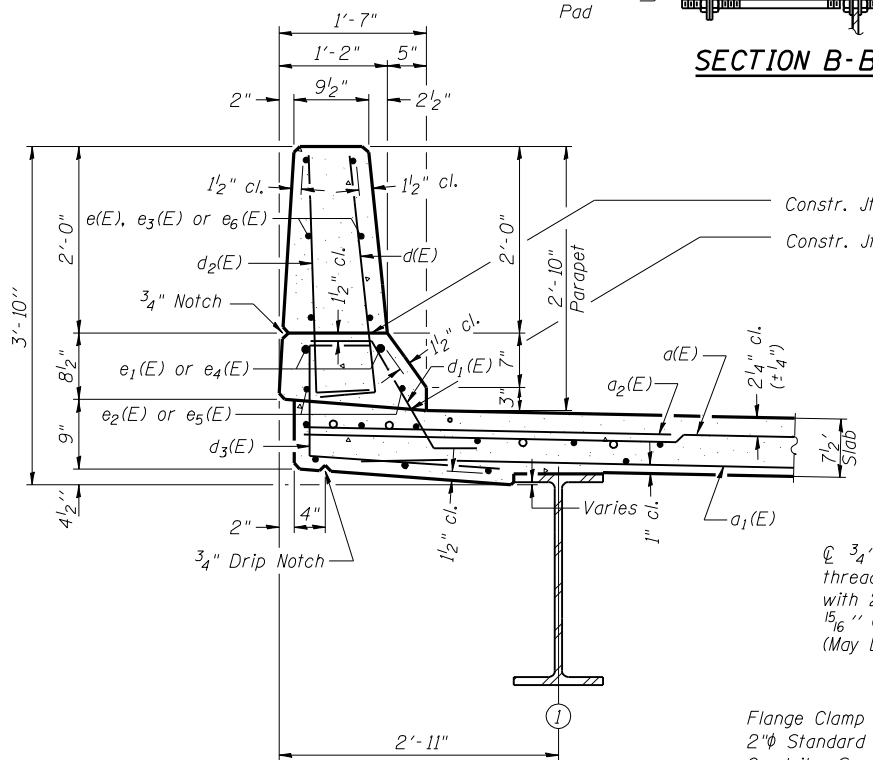
(Showing Aluminum Tube)

*** Dimension as required by Pipe Clamp

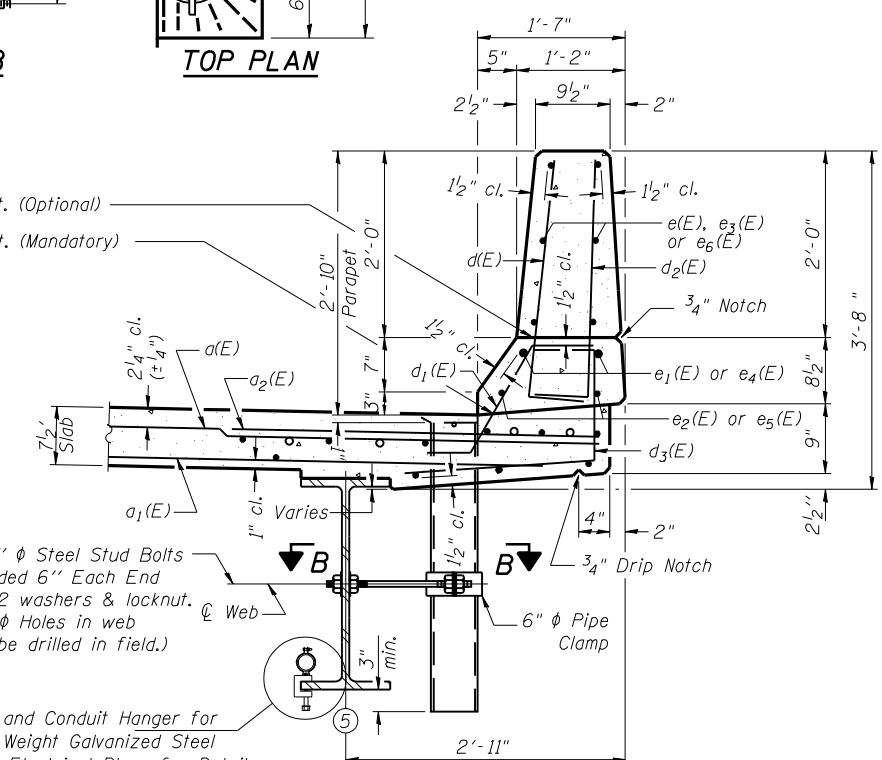


SECTION B-B

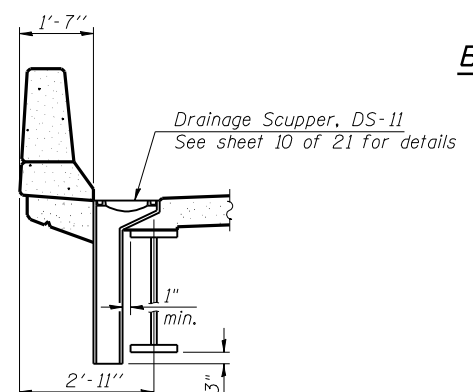
TOP PLAN



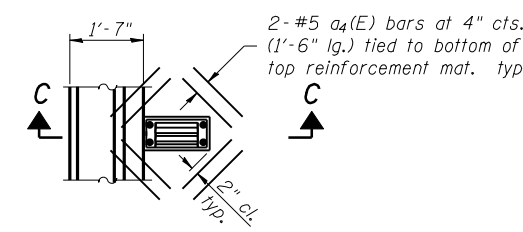
SECTION THRU SOUTH PARAPET
(Looking West Upstation)



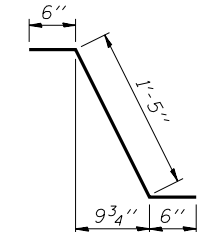
SECTION THRU NORTH PARAPET
(Looking West Upstation)



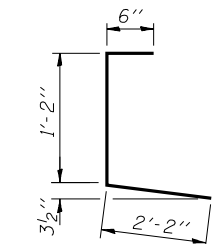
SECTION C-C



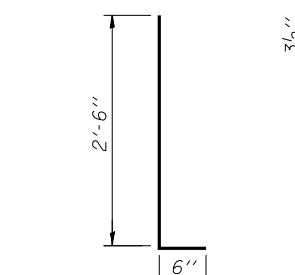
PLAN



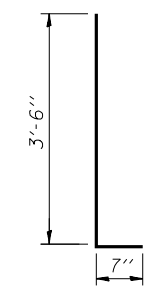
BAR $d_1(E)$



BAR $d_3(E)$



BARS $d(E)$ & $d_2(E)$



BARS $x(E)$

SUPERSTRUCTURE BILL OF MATERIAL

Bar	No.	Size	Length	Shape
$a(E)$	362	#5	28'-6"	—
$a_1(E)$	271	#5	27'-9"	—
$a_2(E)$	363	#6	4'-6"	—
$a_3(E)$	8	#5	15'-9"	—
$a_4(E)$	16	#5	1'-6"	—
$b(E)$	264	#5	30'-0"	—
$b_1(E)$	90	#6	36'-6"	—
$b_2(E)$	234	#5	27'-0"	—
$d(E)$	492	#5	3'-0"	—
$d_1(E)$	492	#5	2'-5"	—
$d_2(E)$	492	#4	3'-0"	—
$d_3(E)$	492	#4	3'-10"	—
$e(E)$	36	#4	14'-11"	—
$e_1(E)$	32	#8	25'-0"	—
$e_2(E)$	32	#5	23'-9"	—
$e_3(E)$	72	#4	7'-6"	—
$e_4(E)$	24	#8	7'-6"	—
$e_5(E)$	24	#5	7'-6"	—
$e_6(E)$	108	#4	14'-4"	—
$x(E)$	66	#5	4'-1"	—
Concrete Superstructure			Cu. Yds.	214.4
Reinforcement Bars (Epoxy Coated)			Lbs.	51660

Notes:
Reinforcement bars designated (E) shall be epoxy coated.
Cut longitudinal reinforcement to clear drainage scuppers.

MIN. BAR LAPS

- #4 Bar - 1'-8"
- #5 Bar - 2'-2"
- #6 Bar - 2'-7"
- #8 Bar - 4'-6"

Corporate License Number 184-001-084

SUPERSTRUCTURE DETAILS
I-72/MACARTHUR BLVD. RAMP C OVER UPRR
SECTION (84-9-4)A,HBK,BY,BY-1
SANGAMON COUNTY
STATION 46+01.97
STRUCTURE NUMBER 084-0516

© Copyright Hanson Professional Services Inc. \$MS_YEAR\$



JOB# 96S2002B

DATE# 11/16/05

LAYOUT	MMW	06/27/03
DRAWN	DAP	01/04/05
REVIEWED	JMM	02/24/05

\$FILE# 12/16/2006